

technical specifications

Writing surfaces (ēno interactive and dry-erase)

- *e³ environmental ceramicsteel*

Power requirements

- No power required for the ēno flex board
- Stylus requires one AAA battery

Educational software (included)

- RM Easiteach® or WizTeach®

Accessories (included)

- Bluetooth® stylus
- Moveable magnetic icon strip
- Bluetooth receiver for Windows® or Macintosh® (USB interface)
- One AAA battery
- PolyVision driver
- Two replacement stylus tips

Environmental certifications

- SCS Indoor Advantage Gold
- RoHS
- Qualifies for LEED points

Recommended computer requirements

Microsoft® Windows

- Pentium® processor
- 512MB RAM
- XP, Tablet XP service pack 2 or above, or Vista®
- One available USB port

Apple® Macintosh®

- PowerPC or Intel microprocessor
- 512MB RAM
- System software OS X 10.3.9 or higher
- One available USB port

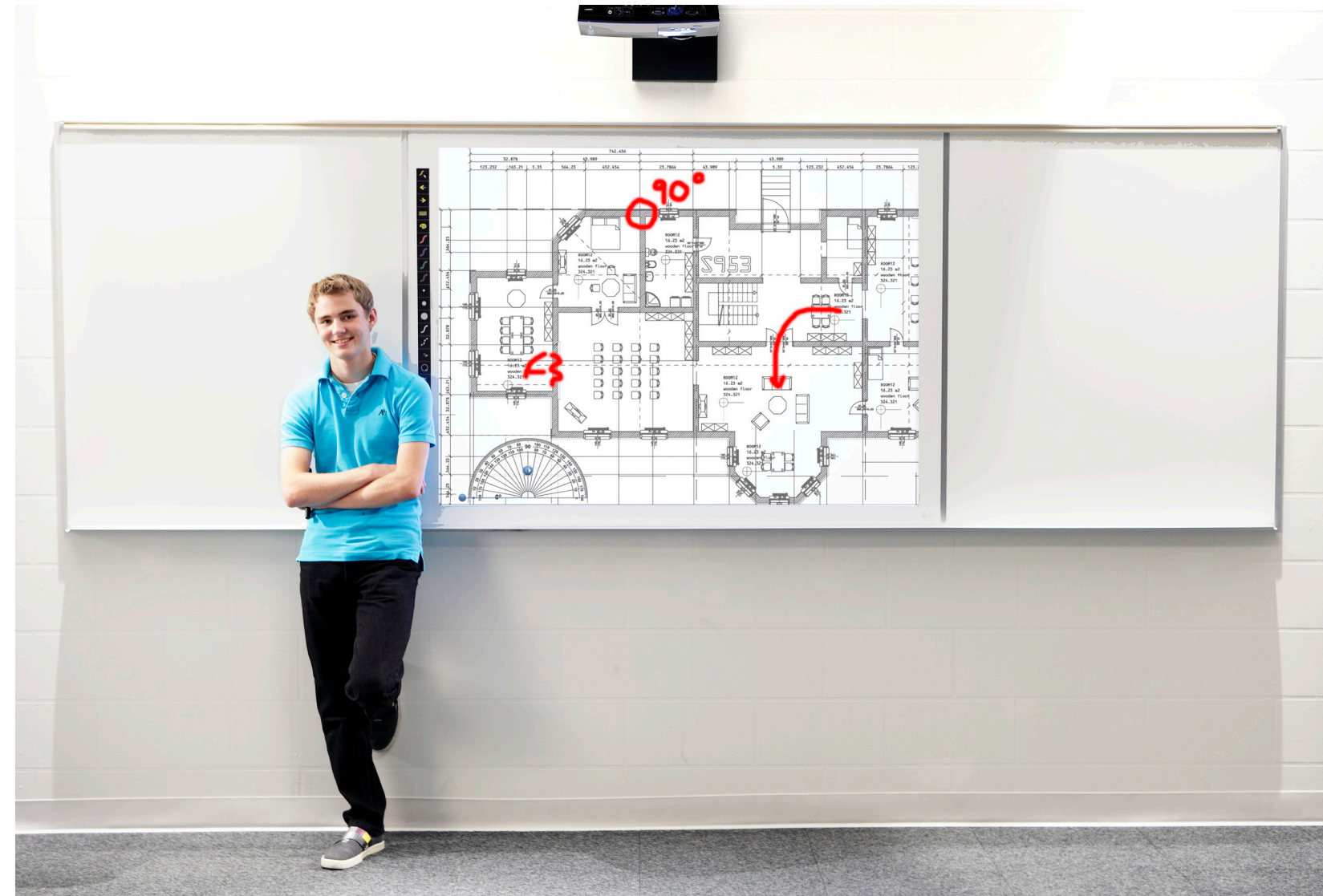
Bluetooth stack support

ēno flex supports the following Bluetooth stacks:

- Windows: Microsoft, Toshiba, Blue Soleil™, Widcomm® Broadcom®
- Macintosh: All Apple stacks

Warranty

Forever Warranty on the *e³ environmental ceramicsteel* surface; ten-year warranty on the trim, mounts, etc.; two-year warranty on all other components. For more information, see the ēno interactive whiteboard user guide.



eVision™ PolyVision is committed to move toward sustainability in all areas of environmental stewardship—to protect people, replenish natural resources, and restore the communities in which we work and live.

©2010 PolyVision Corporation. All rights reserved. Trademarks used herein are the property of PolyVision Corporation or of their respective owners. PolyVision Corporation reserves the right to make changes in product design, construction or detail, and to discontinue any product or material without notice.
15Nov10

1.800.620.POLY
www.polyvision.com
info@polyvision.com

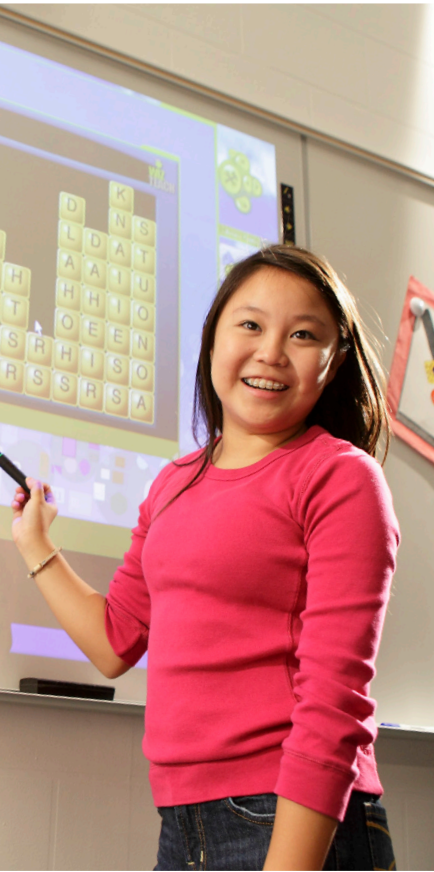
PolyVision®
a steelcase company



"Only ēno flex meets the needs of educators and architects with a single solution, combining interactive and traditional surfaces."

PolyVision®
a steelcase company

bring learning to life™



Interactivity... spec it in from the start

ēno flex is the first multi-surface solution to integrate traditional tack and/or dry-erase surfaces with PolyVision's ēno interactive whiteboard—all without wires or cables. Ideal for new construction or school renovations, ēno flex is available in eight configurations, providing districts the flexibility to choose the board to fit classroom requirements without compromising wall space, aesthetics or teaching style. With one, multi-functional board from one supplier, ēno flex can be specified from the start of any classroom building project.

Features

Lowest total cost of ownership—ēno flex combines the simplicity of a traditional surface with interactive performance into one board. With a Forever Warranty™ on the surface and no cords, cables or high installation costs, ēno flex gives schools the longest lasting, most comprehensive interactive classroom solution on the market.

A single installation meets many classroom and budgetary demands—Multiple configuration options eliminate boards with too much or too little usable space. And, since ēno flex combines interactivity with traditional surfaces, schools can take advantage of funding available for major renovation projects or Division 10 new school construction.

Supports green building initiatives and qualifies for LEED® points—The e³ environmental ceramicsteel™ ēno and dry-erase surfaces are SCS Indoor Advantage Gold® certified, contain no volatile organic compounds (VOCs) and are recyclable.

Simplicity from start to finish—All ēno flex components ship in a manageable 8' box from one supplier. Only one, easy-to-use multifunctional board to install.



"With a single, cable-free board, ēno flex solves my interactive, dry-erase and tackable surface needs."

About ēno

1

Write on ēno all day long.
Erase with ease without damaging the surface.

2

Give students manipulatives for time-tested problem-solving.
It's OK—ēno is tougher than magnets

3

Add a stylus, computer and projector.
And ēno is instantly interactive

Why PolyVision

PolyVision is building on our history with chalkboards, whiteboards and the best writing surfaces since 1954. We've integrated these time-tested tools with innovative technology to meet the challenges of today's 21st century classroom, as well as the design applications of architects. Our decades of commitment to excellence are led by sustainable guiding principles in every facet of our business practices.

e³ environmental ceramicsteel

Green, forever-warranted and so much more:

- Chemical Resistant

Scratch Resistant

Fire Resistant

Graffiti Resistant

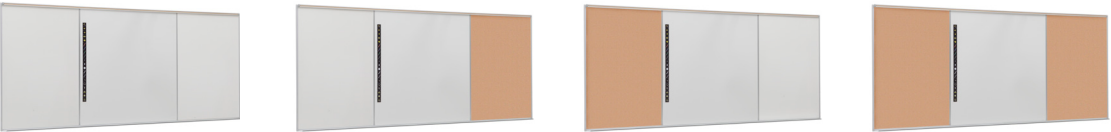
Bacteria Resistant

Stain Resistant



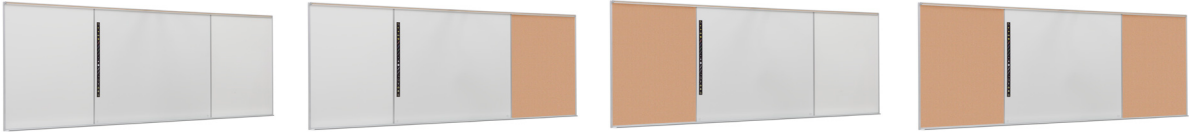
4' x12' ēno flex configurations*

All ēno flex configurations include a full-length marker tray, as well as a full-length tack rail with a flag holder, two map clips and two map rail hooks.



	ēno flex 100	ēno flex 150a	ēno flex 150b	ēno flex 175
Total size (h x w)	47.88" x 144.50"	47.88" x 144.50"	47.88" x 144.50"	47.88" x 144.50"
Center panel (ēno) size	46.27" x 62.60"	46.27" x 62.60"	46.27" x 62.60"	46.27" x 62.60"
Center panel diagonal	77.84"	77.84"	77.84"	77.84"
Left panel	46.27" x 39.55" dry-erase	46.27" x 39.55" dry-erase	46.27" x 39.55" tack	46.27" x 39.55" tack
Right panel	46.27" x 39.55" dry-erase	46.27" x 39.55" tack	46.27" x 39.55" dry-erase	46.27" x 39.55" tack

4' x16' ēno flex configurations*



	ēno flex 200	ēno flex 250a	ēno flex 250b	ēno flex 275
Total size (h x w)	47.88" x 192.41"	47.88" x 192.41"	47.88" x 192.41"	47.88" x 192.41"
Center panel (ēno) size	46.27" x 83.59"	46.27" x 83.59"	46.27" x 83.59"	46.27" x 83.59"
Center panel diagonal	95.53"	95.53"	95.53"	95.53"
Left panel	46.27" x 53.01" dry-erase	46.27" x 53.01" dry-erase	46.27" x 53.01" tack	46.27" x 53.01" tack
Right panel	46.27" x 53.01" dry-erase	46.27" x 53.01" tack	46.27" x 53.01" dry-erase	46.27" x 53.01" tack

* ēno and dry-erase panels are PolyVision's forever-warranted e³ environmental ceramicsteel surface.