

Reply seating



Steelcase

An Easy Choice

Work happens in many places. Choices for seating are abundant with Reply®—a complete family of comfortable budget-friendly chairs that are as nice to look at as they are to sit in.





Transparent comfort

Comfort is no secret for Reply chairs with mesh backs. The exclusive mesh is soft to the touch and delivers remarkable comfort in an airy and light scale design.



Simple comfort

Fully upholstered Reply chairs are a classic approach to comfortable design. Unique coring in the back structure provides dynamic support, all wrapped up in a trim profile that's contoured for comfort.



Up to the task

Reply is ready to take on whatever your workday brings. Simple, easy-to-use controls provide the individual comfort adjustments you need to make sitting a pleasure.



Easily paired

Whether it's multi-use or task seating, the family of Reply chairs gives you a variety of choices so you can create just what you need throughout any environment. And when the day comes, Reply is easy to recycle.

Multi-purpose, multi-use

There's a Reply chair for everywhere. Roll it in for a quick discussion or a longer project meeting. Put it to work in a conference room. Or bring it out for big gatherings and events, then stack six-high when everything is over.





Adjust Simply

Reply chair controls give you comfort right at your fingertips—the kind of comfort that makes it easy to sit for a long time, with the kind of control unexpected in a chair this reasonably priced. Simple, easy-to-use controls provide the adjustments you need to make sitting a pleasure.

Handle on Reply gives you a convenient handhold to move the chair where it's needed.

Height-adjustable lumbar support is optional on Reply mesh to enhance back support.

Back height adjustment on upholstered chair (not shown) allows you to raise or lower the chair back from a seated position to support your lower back.

Seat height adjusts quickly with a simple pull of the lever so anyone can sit comfortably.

Tilt tension adjustment allows you to control the amount of resistance needed for reclining.

Armrests pivot and slide to support your arms properly even when you change position.

Arm height adjusts easily to keep your arms in proper alignment for any task.

Multi-position back lock allows you to lock the backrest in multiple positions.

Seat depth adjustment allows the seat to slide forward or back to accommodate different leg lengths.



Abbreviated Statement of Line



Reply task chair
with upholstered back and seat, adjustable arms, and casters
Frame: Platinum



Reply task chair
with mesh back, adjustable arms, upholstered seat and casters
Frame: Black



Reply 4 leg chair
Stackable with mesh back, upholstered seat and glides
Frame: Platinum
Available Spring 2011.



Reply 4 leg chair
Stackable with upholstered back and seat, arms and casters
Frame: Black
Available Spring 2011.



Reply sled base chair
with upholstered back and seat
Frame: Platinum
Available Spring 2011.



Reply sled base chair
with mesh back, upholstered seat and arms
Frame: Black
Available Spring 2011.



Whether you design them, manage them or work in them, we can help you create high performance, sustainable work environments. We study how work gets done and how great spaces can help. Those insights are embedded into every product and service we offer. Our interior architecture, furniture and technology solutions help organizations build their business, reflect their brand and support their culture.

We're unique from everyone else in our industry, in that we offer products and services founded in a research methodology that focuses on the user, and how they really work.

We are committed to maintaining our leadership role in terms of sustainable responsibility, and we are equally committed to the customers and designers that we work with. Our job is to make your job easier. **Our passion is helping you Love How You Work®.**

Global Dealer Network

With a network of over 800 experienced dealers, we can help you create high performance, sustainable workspaces, anywhere in the world. Our network offers you local expertise with global reach. Whether your project is across town, across the country, or across the ocean, our dealer network will coordinate the logistics so you don't have to. It's local expertise with a global reach.

Steelcase and Dealer Services

Our extensive range of services can help you through all of the phases that a high performance environment evolves through: Measure. Explore. Plan. Provide. Manage.

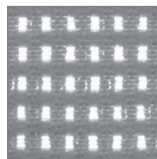
- Measure**—helping you know if your workplace is keeping pace.
- Explore**—helping you link your business goals with the best workplace strategy.
- Plan**—helping you find a solution that addresses your needs.
- Provide**—helping you every step of the way, from project management to move management.
- Manage**—helping you maintain an effective space for today and tomorrow.

Warranty

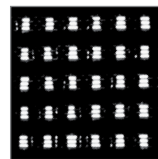
Steelcase and your Steelcase Dealer are totally committed to providing you a great experience and great products. We back that up with one of the industry's best warranties and problem resolution process that ensure that any problems that arise get addressed quickly.

Mesh back color options

Color swatches shown may vary from actual colors. Please use actual surface material samples when specifying colors.



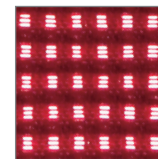
Grey
AR01



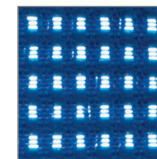
Black
AR02



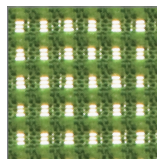
White
AR03



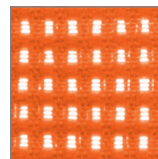
Red
AR04



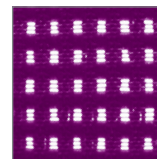
Royal Blue
AR05



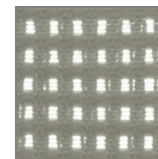
Apple Green
AR06



Orange
AR07



Bright Purple
AR08



Sable
AR09

Upholstery options

Steelcase Surfaces, Select Surfaces or Custom Surfaces (Customer's Own Material) on seats and upholstered backs.



The Reply chair **BIFMA e3 level™ certification** requirements and the **Indoor Advantage™ certification** from Scientific Certification Systems are in process. Reply is "NF Environment Certified"—a voluntary French certification awarded to products that minimize their impact on the environment.

For a complete list of all environmental certifications and downloadable certificates, **visit: steelcase.com/reply.**

Reply is up to 98% recyclable and disassembles quickly and easily, with plastic parts clearly labeled for sorting and recycling.



As part of our commitment to sustainability, this brochure was created using an on-demand printing process, enabling us to digitally print materials only when necessary.

For high resolution images of these products and more, contact your local workplace consultant or dealer representative.

Love how you work.®

Steelcase®

Call 800.333.9939 or visit steelcase.com

Item # 10-0002941 11/10 ©2010 Steelcase Inc. All rights reserved. All specifications subject to change without notice. Printed in U.S.A. Trademarks used herein are the property of Steelcase Inc. or of their respective owners. Why won't anyone reply to my emails anymore? I promise I wasn't angry, I accidentally had the CAPS lock down.