

exam room

products



treatment tables

Simple, functional and built to last a lifetime, Stance Healthcare's offering of Treatment Table is second to none.

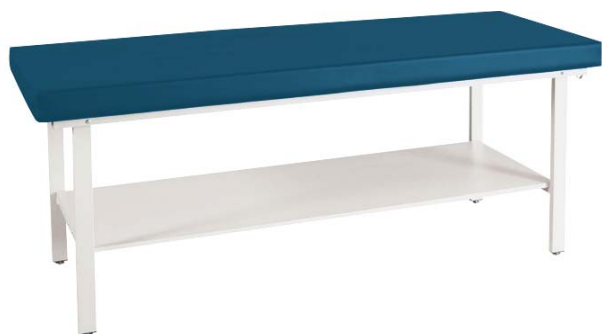
All 3 models include a built-in paper roll holder, adjustable leveling feet to ensure an even surface on uneven floors, and a 400 lb. weight capacity.

Table cushions are upholstered in an ultra durable healthcare-grade vinyl, to ensure long-lasting good looks and easy cleanability.

Table height is standard at 30", however other heights are available at an upcharge.



Model No. ST6085
Treatment table



Model No. ST6085-SH
Treatment table with shelf

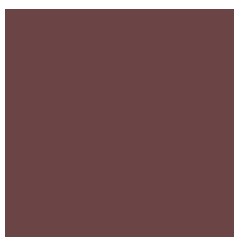


Model No. ST6085-DW
Treatment table with drawer unit

Standard vinyl selection:



Clamshell



Dewberry



New Emerald



Port



Slate Blue

***Vinyls shown are Grade 1.**

6080 examination table

While designing the 6080 examination table, we eliminated a few rarely-used functions commonly found on other tables, and focused on the features that really matter.

The result is a practical, attractive and affordable table, suitable for the majority of today's medical office facilities.

The 6080 can be configured as either a right or left hand model, and includes ample storage space, a slide-out footstool and a crisp looking top upholstered with seamless, easy-to-clean Naugahyde® vinyl.

Top is available in 5 popular colors.

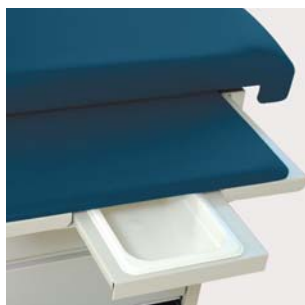


Model SE6080
2 end drawers



Model SE6080-SD
2 end drawers and
3 side drawers

features:



Slide-out footrest and basin



2 end drawers and 3 side drawers
provide ample storage space



Slide-out foot stool for increased
patient accessibility

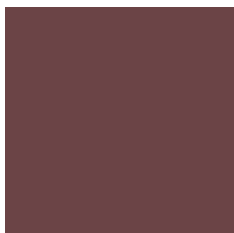


Easy-access lever activates gas
spring for adjustable back tilt

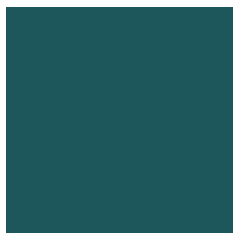
Standard vinyl selection:



Clamshell



Dewberry



New Emerald



Port



Slate Blue

***Vinyls shown are Grade 1.**

bertram stools

The Bertram stool by Stance Healthcare boasts a unique blend of comfort, functionality and aesthetic appeal.

What sets the Bertram stool apart is the fact that it makes special features standard, such as a quick-adjust gas spring for height adjustment, a heavy-duty aluminum base, and a well-padded seat and back support.

Besides our standard height adjuster mechanisms, we now offer an innovative foot mechanism that allows the user to adjust seat height while maintaining a "hands-free" approach. This optional feature may be specified on S1200 and S1260 models.



Bertram stool
model 1200



Bertram stool with foot ring
model 1240

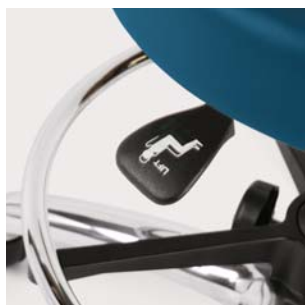


Bertram stool with back support
model 1260

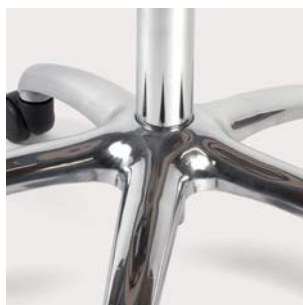


Bertram stool with foot ring
and back support model 1280

features:



Easy-access gas spring lever for
height adjustment



Die-cast aluminum base



Height-adjustable foot ring



Optional foot-activator for height
adjustment keeps hands free

Standard vinyl selection:



Clamshell



Dewberry



New Emerald



Port



Slate Blue

***Vinyls shown are Grade 1.**

phlebotomy chairs

Realizing that our product offering was incomplete without Blood Drawing Chairs, we began the development process by asking our customers what they would like to see in the way of an improvement over the current run-of-the-mill products on the market.

Many of the suggestions we received we were able to turn into reality, and this is evidenced in the features described below.

The generously padded seat and back are upholstered in an ultra durable healthcare-grade vinyl, to ensure long-lasting good looks and easy cleanability.

The contoured Urethane Armrest is height-adjustable and can be flipped up and out of the way for easier ingress and egress.

Frame is constructed from durable 14 gauge powdercoated steel, with a reinforcement H-Brace for added stability, and leveling glides to enable chair to remain level on uneven surfaces.

Standard model has a weight rating of 300 lbs and Bariatric model is rated for 450 lbs.



Model SPR300
Phlebotomy chair



Model SPB450
Bariatric Phlebotomy chair

Standard vinyl selection:



Clamshell



Dewberry



New Emerald



Port



Slate Blue

***Vinyls shown are Grade 1.**

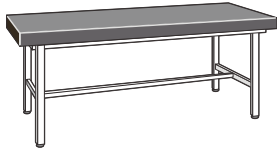
Statement of Line



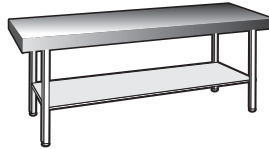
**Examination table
2 end drawers**
W 55
D 28.5
H 34



**Examination table
3 side and 2 end drawers**
W 55
D 28.5
H 34



Treatment table
W 71
D 28
H 30



**Treatment table
with shelf**
W 71
D 28
H 30



**Treatment table
with drawer unit**
W 71
D 28
H 30



Bertram stool
W 21
D 16
H 23
Seat H 18-23



**Bertram stool
with foot ring**
W 21
D 16
H 23
Seat H 18-23



**Bertram stool
with back support
no foot ring**
W 21
D 16
H 35.5
Seat H 18-23



**Bertram stool
with foot ring
and back support**
W 21
D 16
H 35.5
Seat H 18-23



Phlebotomy chair
W 29
D 27
H 44.5
Seat H 22.5
Seat W 18.75
Arm H 29-38



**Bariatric
Phlebotomy chair**
W 34
D 25
H 36.5
Seat H 22.5
Seat W 24.25
Arm H 29-38

