

gibraltar series

case goods



gibraltar series

Gibraltar series case goods from Stance Healthcare are designed exclusively for today's healthcare environments.

The sleek-looking elliptical steel legs add a touch of class while protecting the cabinet securely and allowing a 6" clear space below, for ease of cleaning.

Gibraltar cabinets boast a 3/4" finished back that provides increased durability and is also vented for air flow. Combined with the powdercoated steel legs, these features make the Gibraltar series one of the strongest in the market!

In addition to this, the 1" top features a bowed front design and is surfaced with high-pressure laminate edged with 3mm PVC edging.



Model SG110-R

Bedside cabinet shown with optional seamless spill collector top

features:



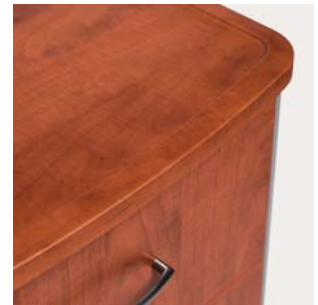
Powder-coated steel drawer sides covered by lifetime warranty



Elliptical steel leg creates a sleek appearance, while ensuring increased strength and protection



Ample cleaning space below cabinet

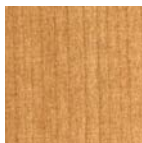


Optional thermoformed top features spill-containment surface

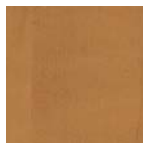
Finish selection:



Hardrock Maple (HM)



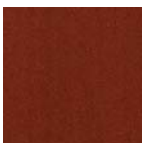
Sugar Maple (SM)



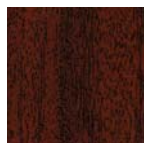
Candlelight (CL)



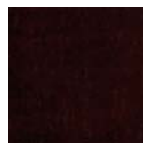
Summer Flame (SF)



Porto (PO)



Mahogany (MA)



Chocolate (CH)



Shown with Gibraltar overbed table - an eye-catching combination!