

# prairie series

case goods



STANCE | HEALTHCARE

# prairie series

Prairie series furnishings from Stance Healthcare are designed to create a “warm and welcoming” traditional – style environment, a prerequisite for any assisted living or long-term care applications.

The Prairie collection boasts a range of popular case good designs, including bedside tables, desks, dressers and wardrobes, all available in a variety of attractive wood finishes.

High-pressure laminate tops are standard, as is hardwood bullnose edging with rounded corners. This combination provides increased durability and softer, safer edges.

Doors and drawer fronts feature solid maple “frames” with 1/4” thick veneer insert panel. Cabinet sides and back sides are 3/4” thickness, surfaced with matching melamine laminate.



## features:



Hardwood bullnose edging ensures durability and safer, softer edges



Optional galley rail available on all bedside table models



Optional plastic drawer liner available for bedside cabinets

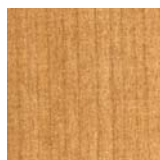


Optional contrasting centre panels may be specified

## Finish selection:



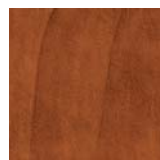
Hardrock Maple (HM)



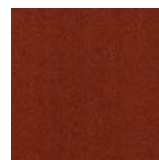
Sugar Maple (SM)



Candlelight (CL)



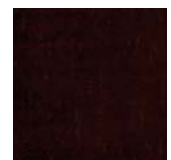
Summer Flame (SF)



Porto (PO)



Mahogany (MA)



Chocolate (CH)

## Hardware options:



Curved Pull

- Brushed Stainless (HSC)
- Brushed Brass (HBC)



Knob

- Brushed Stainless (HSK)
- Brushed Brass (HBK)