

Landscape Areas
Flagpole Lighting
Building Accent
Pedestrian Areas



STA



DM



SL-33



SL-34

Specifications



Certifications

ETL and CETL listed for wet location, direct burial, and concrete pour. Also meets IP65 standard.

Lamp/Ballast Housing

SL-33/34: Compression molded Rhinolite™ composite material, structurally reinforced with glass fibers. Superior resistance to ultra violet degradation and corrosion resistant in harsh environments. In addition the SL-34 includes an 8" tube for direct burial mount with anti-rotation device.

Splice Compartment

Supplied with two 3/4" NPT conduit entrances. Connection to ballast compartment by way of anti-wicking device. Sealed with gasketed cover plate. Suitable for through wiring.

Lens

Standard 1/4" clear tempered convex borosilicate glass (C), optional 7/16" clear tempered flat borosilicate glass (F) or ADA walkover clear tempered flat borosilicate glass (ADA). Flat lenses will withstand loads up to 4500 lbs. Sealed to housing with high temperature extruded silicone gasket. Optional wall wash spread lens (WW) also available.

Lens Frame

Cast bronze lens frame is supplied as standard. Fastened to housing with six 10-24 stainless steel allen cap screws. Optional stainless steel (LFSS) lens ring available. The 10" Square Top Adaptor (STA) lens frame is available in cast aluminum.

Reflector

Spun aluminum highly specular Alzak™ finish for either NEMA type 1 spot (SPT) or NEMA type 3 flood (FLD) distribution for use with "E" lamps. Field adjustable up to 20 degree tilt and 360 degree horizontal rotation. Optional field adjustable reflector from flood-to-spot (FSR).

Lamp Holder

Porcelain 4kv pulse rated medium base, for HID and Incandescent lamp source.

Concrete Pour

Trim Ring TR option required in all concrete pour applications.

Options

Cast aluminum Convex rock Guard (CR), Glare Shield (GS), Directional Shield (DS), Directional Louver (DL), Internal Hex Louver (HL), Glass color filter (GF), Grout Mask (GM), Driveway Marker(DM), Trim Ring (TR).

Finish

Housing Black (BK).

Safety

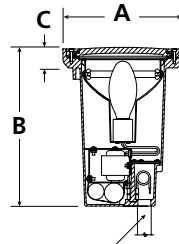
Caution: Care should be taken when specifying fixtures for use in pedestrian walkways to avoid problems that may be caused by high lens temperatures. Consult factory for more information.

Warning

Caution: Care should be taken not to install in-ground fixtures in areas where water can stand for prolonged periods of time. Sufficient drainage must be provided to avoid problems. Consult factory for more information.

SL-33 Product Order Guide

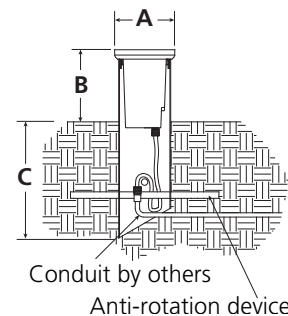
Wattage & Source	Voltage	Lamp Type	Lens	Finish	Options
Incandescent					
75INC	120 ¹	PAR38	F-Flat	BK-Black	CR Convex Rock Guard
75		PAR30L	C-Convex		GS Glare Shield
50		PAR20	ADA-Walkover lens		DS Directional Shield
Metal Halide					
35MH		PAR20, PAR30			DL Directional Louver ²
50MH		E-17			TR Trim Ring
70MH		E-17, PAR38, T6			HL Internal Hexcel Louver
High Pressure Sodium					
35HPS		E-17			GF ⁶ Glass Filter (Specify color)
50HPS		E-17			DM Driveway Marker
70HPS		E-17, PAR38			GM Grout Mask
Fluorescent					
13CFQ		CFQ			WW Wall Wash lens
13,18,26,32,42CFT ⁴		CFT			SPT Spot Reflector
Low Voltage					
75LV		AR111, MR16, PAR36			FLD Flood Reflector



Dimension	US	Metric
A	8-3/4"	235mm
A (STA)	10"	254mm
B	12"	305mm
C	1-7/16"	36.5mm
C (DM)	2-15/16"	75mm

SL-34 Product Order Guide

Wattage & Source	Voltage	Lamp Type	Lens	Finish	Height Above Ground	Options
Incandescent						
75INC	120 ¹	PAR38	F-Flat	BK-Black	DB ³	CR Convex Rock Guard
75		PAR30L	C-Convex		DB-6"	GS Glare Shield
50		PAR20			DB-12"	DS Directional Shield
Metal Halide						
35MH		PAR20, PAR30			DB-18"	DL Directional Louver ²
50MH		E-17			DB-24"	HL Internal Hexcel Louver
70MH		E-17, PAR38, T6			DB-30"	GF ⁵ Glass Filter (Specify color)
High Pressure Sodium						
35HPS		E-17				LFSS Stainless Steel Lens Frame
50HPS		E-17				LCA Cast Aluminum Lens Frame
70HPS		E-17, PAR38				SPT Spot Reflector
Fluorescent						
13CFQ		CFQ				FLD Flood Reflector
13,18,26,32,42CFT ⁴		CFT				FSR Field Adjustable Flood to Spot Reflector
Low Voltage						
35LV		AR111, MR16, PAR36				
50LV		AR111, MR16, PAR36				
75LV		AR111, MR16, PAR36				



DB Option

Dimension	US	Metric
A	8-3/4"	235mm
B	30" max	457mm max
C	18"	457mm

Notes

- For other voltages consult factory
- For flat lens only
- DB option is direct burial only with 18" or 457mm of tube in the ground and anti rotation device.
- 42W Convex Lens Only
- GF Not available for 42CFT-32max