

INSTALLATION SHEET

Safety, Warnings and Suggestions

- ¹ **Avoid** installing fixtures in locations where water collects and stands for prolonged periods.
- ² **Make** sure that electrical power is disconnected before any work is performed.
- ³ **All** wiring and installation should meet local, state and national electrical codes.

Maintenance

- ¹ **Make** sure that electrical power is disconnected before any work is performed on the fixture.
- ² **Install** correct lamp type and wattage when required.
- ³ **Check, Remove and Clean** any debris or dirt on the lens surface.



1. Prepare the site and make sure that the electrical junction box or ballast box are correctly installed before installing the SL-35.^{1,2,3.}

2. Unscrew the four (4) 8-32 cap head screws holding the visor/lens assembly.

3. Remove the visor/lens assembly.

4. Install correct lamp type and wattage.

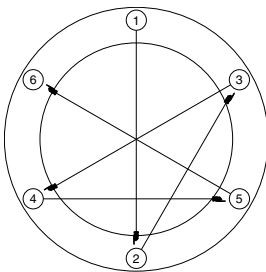
5. Re-install the visor/lens assembly and hand tighten the four (4) 8-32 cap head screws to 10 in/lbs. maximum.

6. To adjust the aim in the vertical plane, unscrew the 1/4-20 cap head screw which attaches the housing to the knuckle several turns. Aim the housing. Then hand tighten the 1/4-20 cap head screw to 10 in/lbs. maximum. The fixture housing can be adjusted 130°.

7. To adjust the aim in the horizontal plane unscrew the 1/2" NPT lock nut (junction box) or the two (2) 1/4-20 cap head screws securing the fixture to the ballast box several turns. The fixture can be adjusted 360°. Once the correct position has been established lock the fixture in place, by either, tightening the 1/2" NPT lock nut (junction box) or the two (2) 1/4-20 cap head screws to 15 in/lbs. maximum (ballast box).

Safety, Warnings and Suggestions

- ¹ **Care** should be taken not to position fixtures in locations where bare skin can come into contact with the potentially high temperatures on the lens.
- ² **Avoid** installing fixtures in locations where water collects and stands for prolonged periods.
- ³ **Make** sure that electrical power is disconnected before any work is performed.
- ⁴ **All** gaskets and sealing surfaces must be kept clean during installation.
- ⁵ **As** a rule of thumb, the higher the fixture is mounted above grade potential problems such as foliage over growth or water, mud etc. collecting on the lens are reduced.
- ⁶ **All** wiring and installation should meet local, state and national electrical codes.
- ⁷ **This** will help prevent wire connector corrosion due to water penetration from the conduit.
- ⁸ **Install** correct lamp type and wattage.



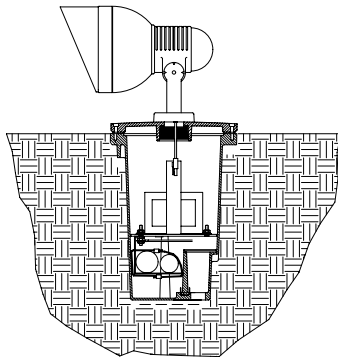
Use several rotations of the following sequence to tighten the cast cover plate screws, to 40 in/lbs. max.

Mount Fixture as high above grade as possible to prevent debris and water standing on fixture surface.

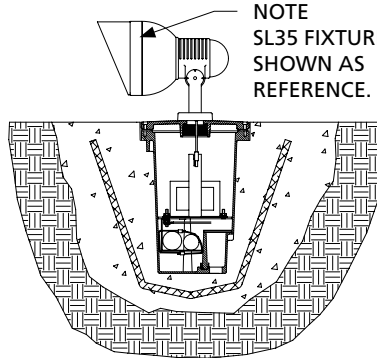
Create an isolation barrier around the fixture to prevent rocks and foliage from interfering with light output.

Add drainage media below and around fixture to prevent standing water.

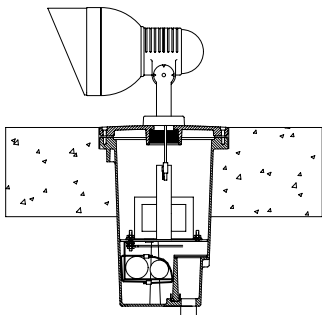
NOTE
SL35 FIXTURE
SHOWN AS
REFERENCE.



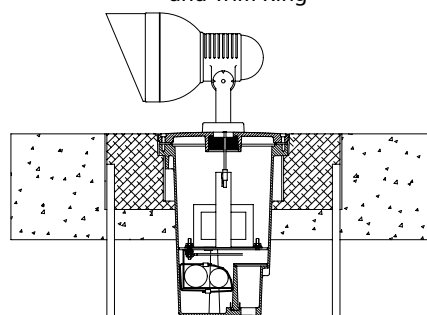
SL-33 In Soil



SL-33 In Soil With Concrete Base and Trim Ring



SL-33 In Concrete with Trim ring



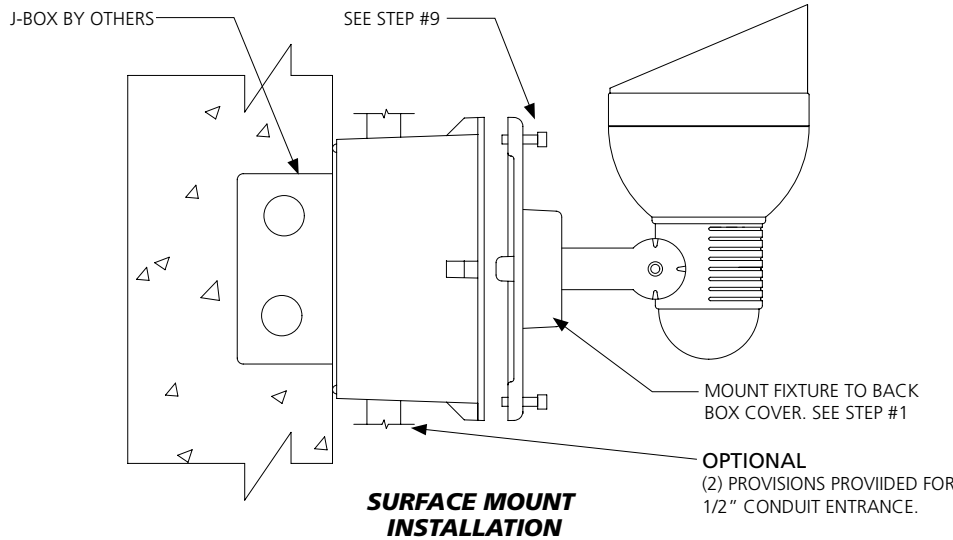
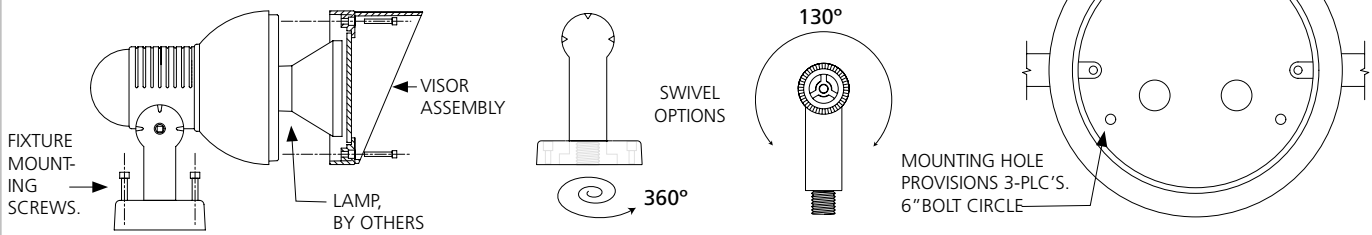
SL-33 In Concrete With Grout Mask and Trim Ring

- 1. Prepare the site with adequate excavation to install fixtures¹. Drainage media below fixture will enhance installation^{2,3}.
- 2. Remove the cover plate with gasket,⁴ ballast assembly and "D" shaped splice box cover plate and gasket.
- 3. Position the ballast housing so it is flush or just above the installation area grade.⁵
- 4. Connect conduit to the 3/4" NPT openings in the splice compartment at the bottom of the fixture, using the appropriate thread sealing compound. Tighten to 15 ft-lbs. max.
- 5. Make power and ground connections using the supplied water-proof connectors. Make wire connection in the splice compartment using waterproof wirenuts by contractor. It is recommended that RTV Silicone or other re-enterable water sealing compound be used to seal the conduit entry points⁷.
- 6. Reinstall "D" shaped splice box cover plate and gasket ensuring that all four (4) screws are securely tightened.⁴ Reinstall ballast assembly.
- 7. Install the ballast cover with the fixture mounted to it and gasket-see installation sheet on how to mount the fixture. **IMPORTANT! A CRISS CROSS PATTERN IS REQUIRED TO ENSURE THAT A GOOD COMPRESSION SEAL IS MADE.** If this is not accomplished the fixture could leak and be damaged. Tighten screws gradually using multiple tightening steps up to 40 in/lbs. max .

INSTALLATION SHEET

Safety, Warnings and Suggestions

- ¹ Care should be taken not to position fixtures in locations where bare skin can come into contact with the potentially high temperatures on the lens.
- ² Avoid installing fixtures in locations where water collects and stands for prolonged periods.
- ³ Make sure that electrical power is disconnected before any work is performed.
- ⁴ All wiring and installation should meet local, state and national electrical codes.



1. Remove fixture from package and mount to the BACK BOX COVER with (2)-1/4-20 cap head screws provided with the fixture.
2. Remove the visor/lens assembly by unscrewing (4) 8-32 cap head screws. Make sure all hardware is carefully saved until needed.
3. Install the correct lamp type and wattage.
4. Re-install the visor/lens assembly and hand tighten the four (4) 8-32 cap head screws to 10 in/lbs. max.
5. Position the box on the mounting surface area and secure to surface with three-1/4-20 bolts, bolts by others. (SURFACE MOUNT ONLY).

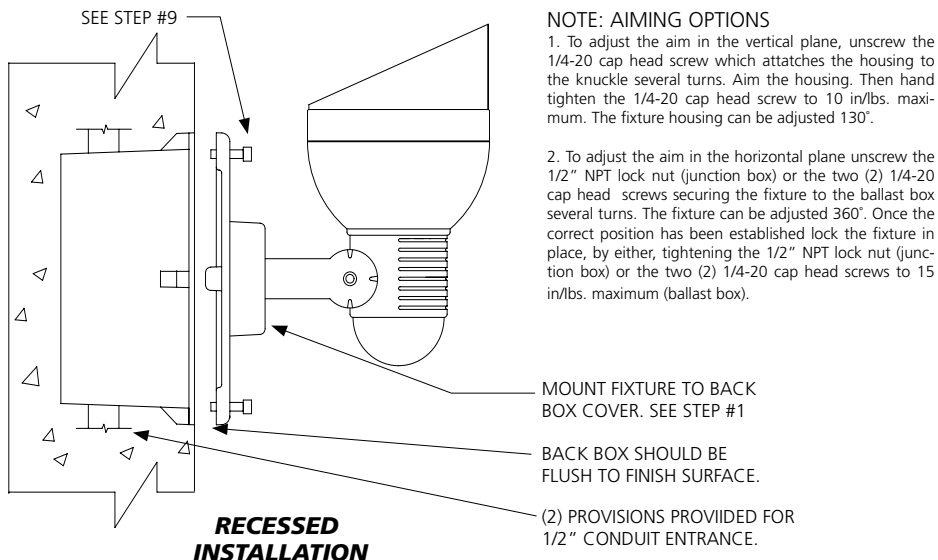
5A. Connect the conduit to the provisions on the back box. See installation details. (RECESSED ONLY)

6. Once the conduit has been connected, Secure back box to wall opening or any mounting provisions being used to hold box in place. Make sure that back box is flush to the finish surface level.

7. After all preparations to wall have been finished, carefully clean out any dirt left inside of the back box. (RECESSED ONLY)

8. Carefully make all necessary connections using UL listed connectors.

9. Install the back box cover with the fixture mounted to it with four-(4) 10-24 cap head screws provided with the fixture.



NOTE: AIMING OPTIONS

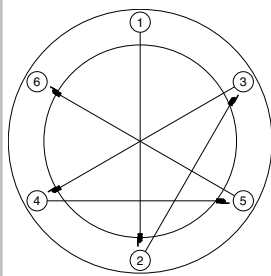
1. To adjust the aim in the vertical plane, unscrew the 1/4-20 cap head screw which attaches the housing to the knuckle several turns. Aim the housing. Then hand tighten the 1/4-20 cap head screw to 10 in/lbs. maximum. The fixture housing can be adjusted 130°.

2. To adjust the aim in the horizontal plane unscrew the 1/2" NPT lock nut (junction box) or the two (2) 1/4-20 cap head screws securing the fixture to the ballast box several turns. The fixture can be adjusted 360°. Once the correct position has been established lock the fixture in place, by either, tightening the 1/2" NPT lock nut (junction box) or the two (2) 1/4-20 cap head screws to 15 in/lbs. maximum (ballast box).

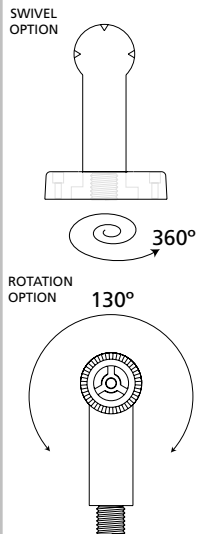
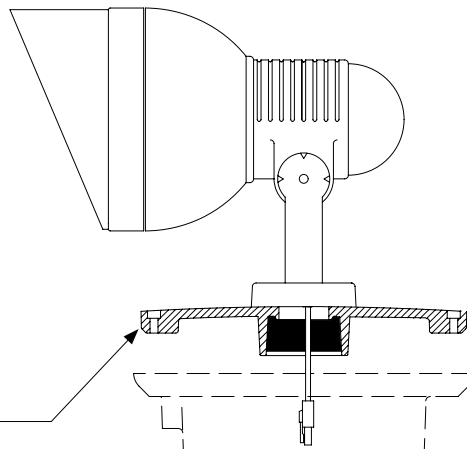
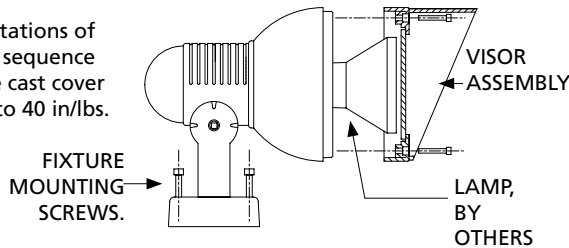
INSTALLATION SHEET

Safety, Warnings and Suggestions

- ¹ *Care* should be taken not to position fixtures in locations where bare skin can come into contact with the potentially high temperatures on the lens.
- ² *Avoid* installing fixtures in locations where water collects and stands for prolonged periods.
- ³ *Make* sure that electrical power is disconnected before any work is performed.
- ⁴ *All* gaskets and sealing surfaces must be kept clean during installation.
- ⁵ *As* a rule of thumb, the higher the fixture is mounted above grade potential problems such as foliage over growth or water, mud etc. collecting on the lens are reduced.
- ⁶ *All* wiring and installation should meet local, state and national electrical codes.
- ⁷ *Install* correct lamp type and wattage.



Use several rotations of the following sequence to tighten the cast cover plate screws, to 40 in/lbs. max.



NOTE:
SL-33 COMPOSITE HOUSING SHOWN DOTTED FOR REFERENCE. SEE SL-33 COMPOSITE BALLAST HOUSING FOR INSTALLATION INSTRUCTIONS.

1. Install ballast housing or junction box as required for job.
2. Remove fixture and ballast housing cover from packaging.
3. Remove the visor/lens assembly by unscrewing four-(4) 8-32 cap head screws.
4. Install the correct lamp type and wattage.
5. Re-install the visor/lens assembly and hand tighten the four-(4) 8-32 cap head screws to 10 in/lbs. max.
6. Install the ballast cover with the fixture mounted to it; with six-(6) 10-24 cap head screws provided with the cover.
IMPORTANT! A CRISS CROSS PATTERN IS REQUIRED TO ENSURE THAT A GOOD COMPRESSION SEAL IS MADE. If this is not accomplished the ballast housing could leak and be damaged. Tighten the screws gradually using multiple tightening steps up to 40 in/lbs. max.

NOTE: AIMING OPTIONS

1. To adjust the aim in the vertical plane, unscrew the 1/4-20 cap head screw which attaches the housing to the knuckle several turns. Aim the housing. Then hand tighten the 1/4-20 cap head screw to 10 in/lbs. maximum. The fixture housing can be adjusted 130°.
2. To adjust the aim in the horizontal plane unscrew the two (2) 1/4-20 cap head screws securing the fixture to the ballast box several turns. The fixture can be adjusted 360°. Once the correct position has been established lock the fixture in place by tightening the two (2) 1/4-20 cap head screws to 15 in/lbs. maximum (ballast box).