

Low Level Lighting
6" Round Aluminum Bollard
Landscape Accent
Walkways
Building Entrances
Planter Areas
Parks
Parking Lots



Specifications



- Certifications** The fixture shall be ETL and CETL listed for wet location.
- Light Distribution** The LL-02 luminaire shall meet the specified light distribution and footcandle levels with an internal optical system.
- Assembly** The fixture shall be factory pre-wired, with high temperature wire completely assembled and tested prior to shipment. Field installation to mounting base shall be accomplished without having to remove or disassemble any fixture components. Fixture shall be ETL listed "suitable for wet locations."
- Housing** The housing shall be constructed from 6" diameter one piece extruded 6063 alloy aluminum tube.
- Ballast** Ballast shall be readily accessible, removable and insulated. Quick disconnects are standard.
- Lens** Clear or opal 1/4" thick polycarbonate.
- Optical Assembly** The specified optical system shall be of all non-ferrous components, mounted and removable as a one-piece self-contained unit.
- Finish** BK-BZ-WH-GR-GY-NA baked enamel standard, other colors available. Anodized finish also available.

PROJECT
FIXTURE TYPE
CATALOG#

2930 South Fairview Street
 Santa Ana, CA 92704
 Phone: 714 668 3660
 Fax: 714 668 1107
 allighting@earthlink.net
 http://www.allighting.com

LL-02

Product Order Guide

Series	Max Watts	Lamp Type	Voltage ¹	Optical System	Overall Height	Finish ¹	Options
LL-02	70 MH	E-17	120	O	30"	BZ Bronze	F Fusing
	70 HPS	E-17	208	CLF	36"	BK Black	FF Double Fusing
	26 CFQ	CFQ ²	240	CLR ³	42"	GR Green	HSS House Side Shield
	42 CFT	CFT ²	277			GY Gray	EMG Emergency Battery Backup
	13 CF	CF ²				WH White	HDBP Heavy Duty Base Plate
						CC Custom Color	
						NA Natural aluminum	
						BAA Clear Anodized	
						BZA Bronze Anodized	
						BJA Black Anodized	

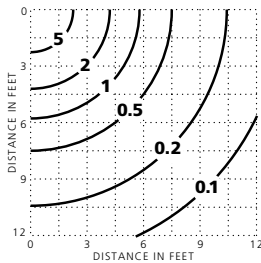
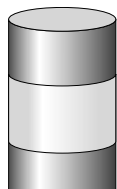
¹ Consult factory for other colors and voltages

² CF = single biax, CFQ = double biax, CFT = triple biax

³ CLR 26CFT max

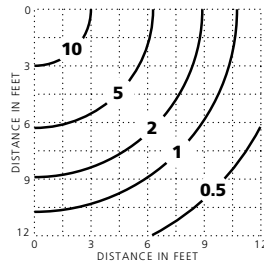
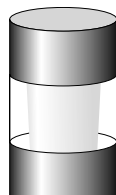
Example: LL-02-70HPS-E17-120-CLR-42-BZ-PL

Photometric Data



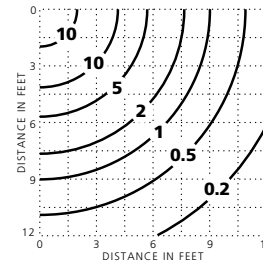
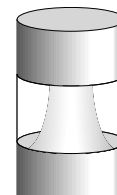
LL-02-70HPS-O-36

Clear Lamp
 5,800 Lumens
 36" Mounting Height
 ISOLUX Curves—value in initial footcandles



LL-02-70HPS-CLF-36

Clear Lamp
 5,800 Lumens
 36" Mounting Height
 ISOLUX Curves—value in initial footcandles

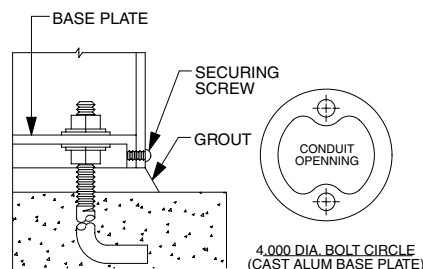
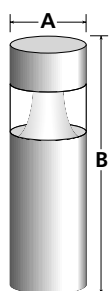


LL-02-70HPS-CLR-36

Clear Lamp
 5,800 Lumens
 36" Mounting Height
 ISOLUX Curves—value in initial footcandles

Luminaire Dimensions

Luminaire	A	B	Weight
LL-02	6"	30"	20#
	6"	36"	24#
	6"	42"	26#



Anchor Bolt Size
 (2) 1/2" x 12" x 3"