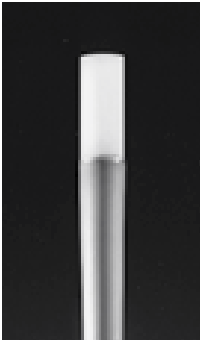


3

RIVA



**RIVA**  
Pole Mounted Luminaire

This simple, yet elegant, luminaire is complemented by a sleek inverted tapered pole. RIVA is precision-machined from billet aluminum, then satin anodized. The matte acrylic cylindrical lens diffuses light uniformly. Inverted tapered steel pole with flush handhole is hot-dip galvanized prior to being finished in finely

textured paint. Pole is secured to ground mounting assembly with stainless steel socket head cap screws. All hardware is stainless steel. Standard color; matte silver grey metallic. Special colors available. See technical data sheet for details.

Listed for Wet Locations

Model	Pole	Lamp
RV260	7.5' IT	70 MH / 50 MH / 2/24 CF
RV360	10.4' IT	70 MH / 50 MH / 2/24 CF



**RIVA**  
Illuminating Bollard

Simple lines typify the RIVA bollard. The base housing is precision-machined from billet aluminum, then satin anodized. The matte acrylic cylindrical lens diffuses light uniformly. Inverted tapered shaft of cast aluminum is finished in finely textured paint to create a unique appearance. Bollard is secured to ground

mounting assembly with stainless steel socket head cap screws. All hardware is stainless steel. Standard color; matte silver grey metallic. Special colors available. See technical data sheet for details.

Listed for Wet Locations

Model	Height	Lamp
RV900	35.4"	26 CF

