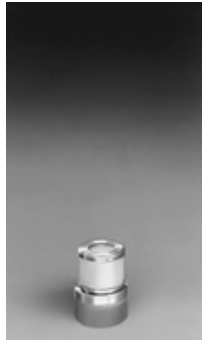


3

TRENTO



TRENTO
Illuminating Bollard

Design simplicity and precision machining distinguish the TRENTO. Housing is constructed of high-grade billet aluminum with satin anodized finish. Translucent acrylic lens creates a soft ambience,

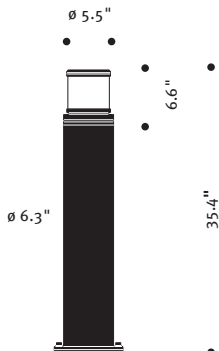
while the prismatic top lens adds a contrasting lighting element. Optional flashed opal top lens mutes the lamp image. Heavy wall extruded aluminum shaft is finished in finely textured paint.

Luminaire is available in three heights. All hardware is stainless steel. Standard color; matte silver grey metallic. Special colors available. See technical data sheet for details.

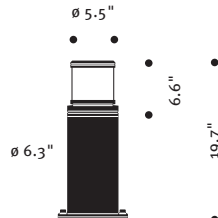
 Listed for Wet Locations

Model	Height	Lamp
TR900	35.4"	18 CF / 13 CF / 20 MH
TR500	19.7"	18 CF / 13 CF / 20 MH
TR275	10.8"	18 CF / 13 CF / 20 MH

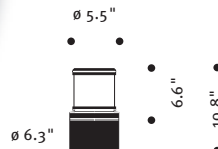
Design: Klaus Begasse



TR900



TR500



TR275

