

Chess 010

Hopscotch 2823

Specifications

Contents

60% post-consumer recycled polyester
40% pre-consumer recycled polyester

Weight

11.1 ± 1.0 oz./lin. yd.

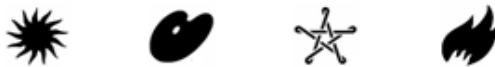
Width

66" min. useable

Cleaning Code

Standard Care Label W-S. Clean with water based cleaning agents, foam or pure, water free solvents. Vacuuming or light brushing is recommended to prevent dust and soil buildup.

Performance



Breaking Strength (ASTM D5034)

125 lbf min. warp and fill

Tear (ASTM D2261)

20 lbf min. warp and fill

Colorfastness to light (AATCC 16 Option 3)

Grade 4 min. at 40 hours

Colorfastness to crocking (AATCC 8)

Grade 4 min. dry & Grade 3 min. wet

Flammability

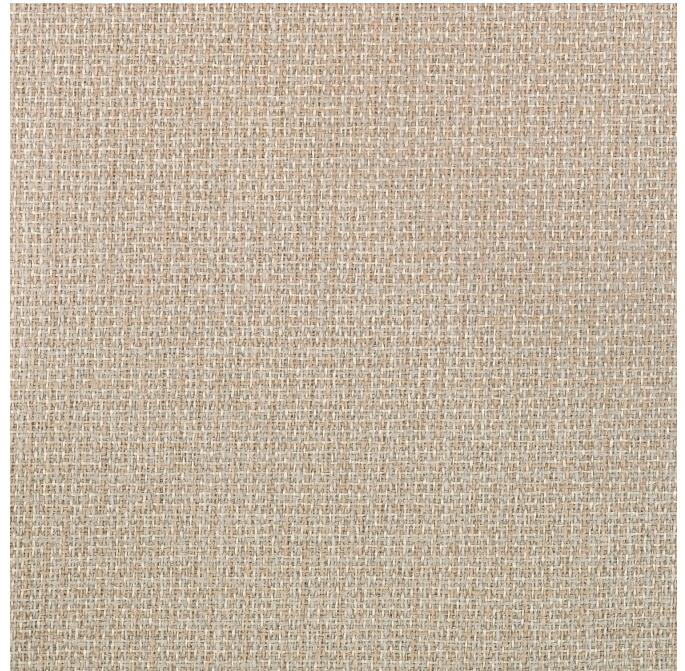
ASTM E84 Class I or A

NRC of anechoic termination

1.00

NRC of fabric in front of anechoic termination

.95



Terratex is a registered trademark of True Textiles, Inc. and designates fabrics that are made from 100% recycled or compostable material using increasingly sustainable manufacturing practices to produce a high quality product that is recyclable at the end of its useful life. (terratex.com)

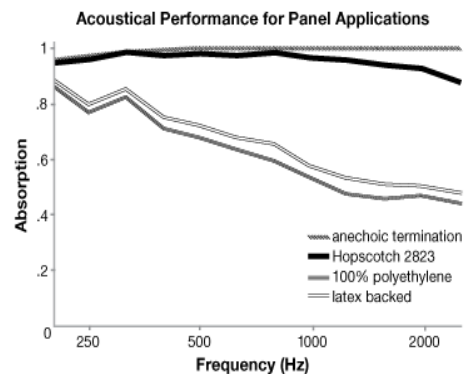


CO₂ emissions from 100% of the electricity used by the manufacturer to produce this product have been measured and offset in accordance with the CarbonNeutral Protocol.



This pattern is included in the underwriters laboratory panel fabric recognition program. Additional testing of this U.L. recognized fabric is not required on approved panels from participating manufacturers.

The plot below summarizes impedance tube measurements of absorption of an anechoic termination and various fabrics in front of the anechoic termination.



Guilford of Maine