

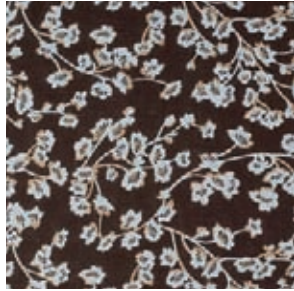
Suncloth® and Versatex® have been arranged in color families to suggest coordinating fabrics.

suncloth® fabric collection

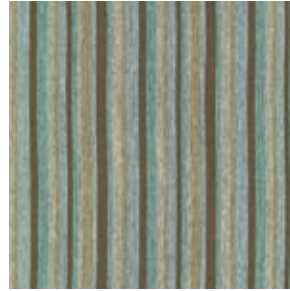
LAKESIDE



755 Mar Vista (C)



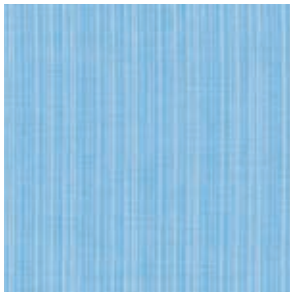
800 Tidewater (C)



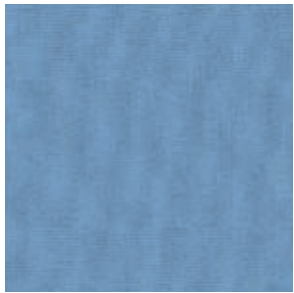
805 Downwind (B)



754 Shore Stripes (B)



790 Latitude (A)



782 Bay Blue (A)

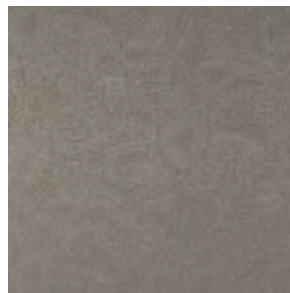
BOULEVARD



766 Montenegro (C)



752 Twilight (C)



751 Wells Grey (C)



781 Ridge Stripes (A)



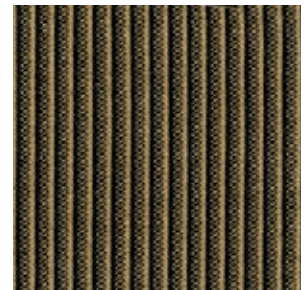
703 Ebbtide (A)



621 Demeter (A)



776 Edgewater (A)



824 Ligne (A)

suncloth® fabric collection

Suncloth® and Versatex® have been arranged in color families to suggest coordinating fabrics.

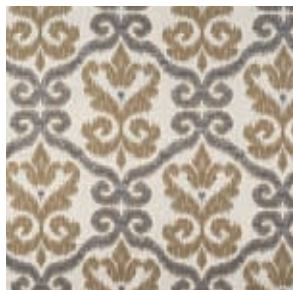
GALLERY

suncloth® fabric

02



798 Messina (C)



825 Bar Harbor (B)

DUNES



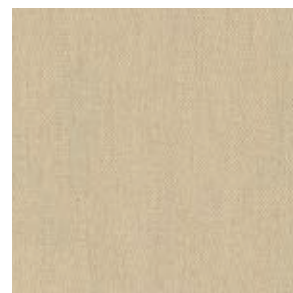
780 Pale Blooms (B)



749 Redondo Stripes (A)

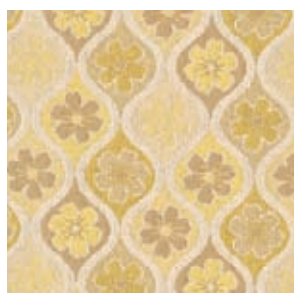


772 Stone Stripes (A)

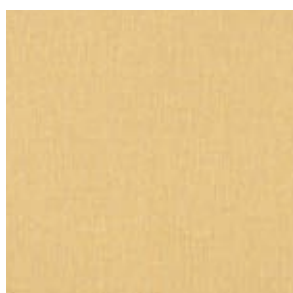


775 Harbor (A)

CORONA



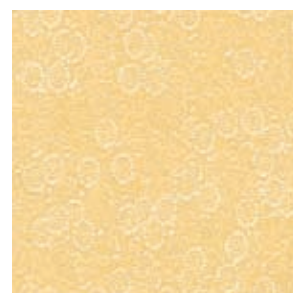
760 Ogee Pansy (B)



830 Maize (A)



761 Summertime (A)



762 Lemon Burst (A)



793 Adrift (A)



763 Sonoma (B)



764 Citrus Stripes (A)



769 Tangerine (A)

Suncloth® and Versatex® have been arranged in color families to suggest coordinating fabrics.

suncloth® fabric collection

CONSERVATORY



756 Herron Floral (A)



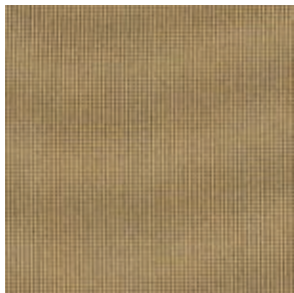
759 Mesa Stripes (A)



758 Desert Spot (A)



791 Spenser (A)



813 Bajada (A)



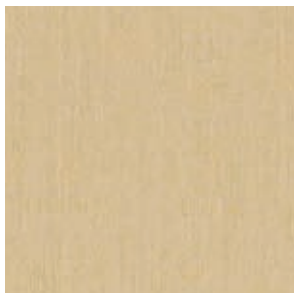
682 Henderson (C)



622 Donata (A)



704 Gold Sand (A)



653 Sand Castle (A)



658 Driftwood (A)

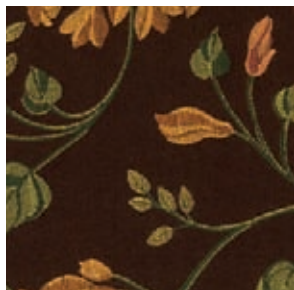
suncloth® fabric collection

Suncloth® and Versatex® have been arranged in color families to suggest coordinating fabrics.

SOUTHERN CROSS

suncloth® fabric

04



684 Aramis Brunet (C)



740 Hanali (B)



736 Mariana (B)



729 Daybreak (A)



732 Zuma (B)

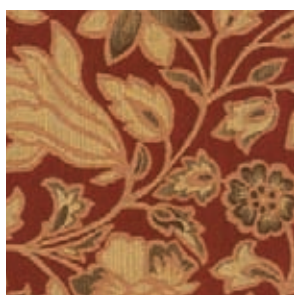


646 Sunburn (A)



657 Arabia (A)

HACIENDA



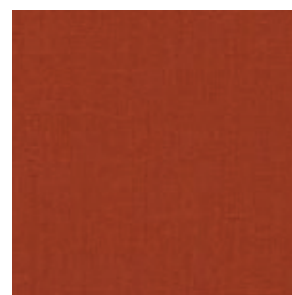
659 Indian Summer (B)



693 Harvest Stripe (A)



816 Marin (A)



647 Terra Cotta (A)



686 Penelope (B)



696 Rhodes (B)



661 Carmel (A)



672 Spice (A)

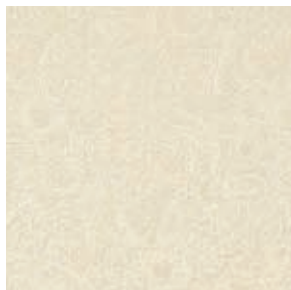
Suncloth® and Versatex® have been arranged in color families to suggest coordinating fabrics.

suncloth® fabric collection

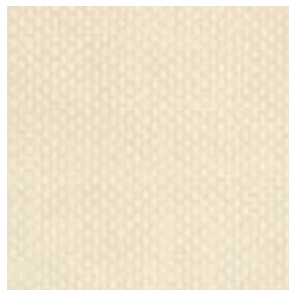
SHELTER



681 Aramis Blonde (C)



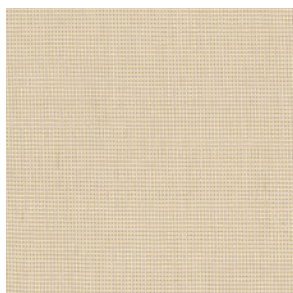
789 Crossroads (C)



826 Somerset (B)



656 Windsurf (A)



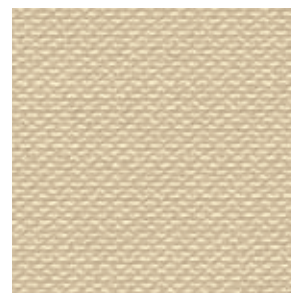
667 Seashell (A)



748 Spindrift (A)



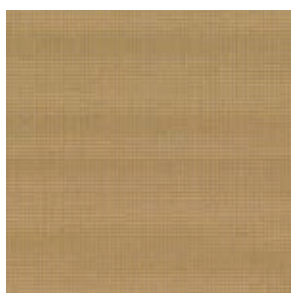
660 Sahara (A)



765 Coronado (B)



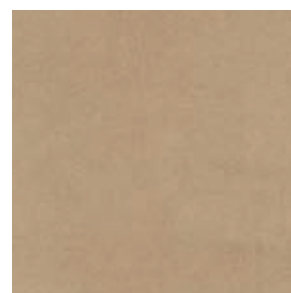
747 Majorca (B)



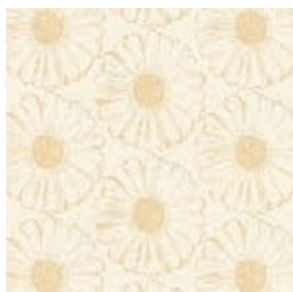
669 Bisque (A)



744 Palmilla (C)



770 Mill Creek (B)



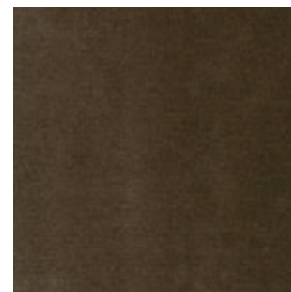
745 Moorea (C)



771 White Bluff (B)



778 Oak Park (B)



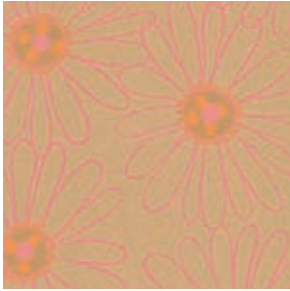
779 Deer Run (B)

TERRACE

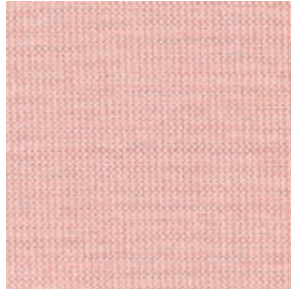
suncloth® fabric collection

Suncloth® and Versatex® have been arranged in color families to suggest coordinating fabrics.

TERRACE (continued)



808 Wildflower (C)



799 Blossom (B)



797 Spring Stripe (C)

SUMMERHOUSE



735 Laurel Canyon (B)



731 Topanga (B)



784 Reeves (A)



785 Carleton (A)



841 Woodson (A)



835 Lemonlime (A)



786 Emerson (B)



743 Wedge (B)



699 Meadow Wood II (A)



644 Salamander (A)



806 Windjammer (B)



624 Amala Leaves (A)

Suncloth® and Versatex® have been arranged in color families to suggest coordinating fabrics.

suncloth® fabric collection

SUMMERHOUSE (continued)



623 Amala (B)



625 Amala Stripe (A)

SUNCOURT



809 Bergamot (C)

suncloth® fabric

07



794 Kahlo (B)



777 Bells Beach (B)



620 San Lucas (A)



792 Newcastle (A)

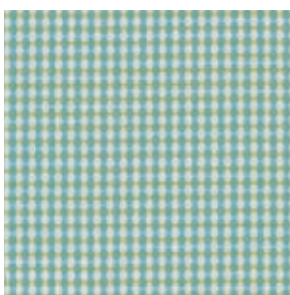
LATITUDE



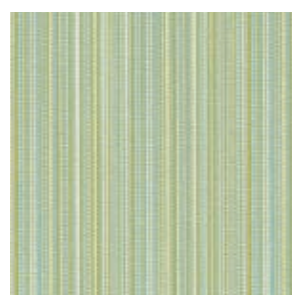
767 Breakwater (C)



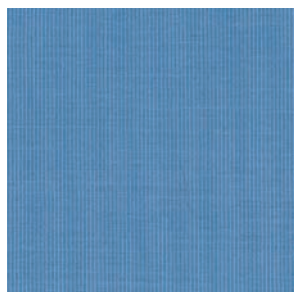
733 Summer Swells (B)



787 Amalfi (A)



730 Oceanside (A)



689 Surf (A)



795 Little Prince (B)



803 Marine Life (B)



Suncloth® and Versatex® have been arranged in color families to suggest coordinating fabrics.

suncloth® fabric collection

SOLIDS (all grade A)



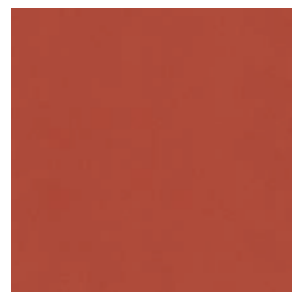
726 Pacific



822 Admiral



811 Cardinal



810 Burnt Cedar



suncloth® fabric

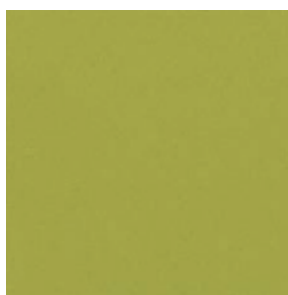
09



812 Sunrise



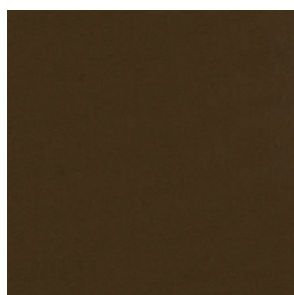
814 Omaha



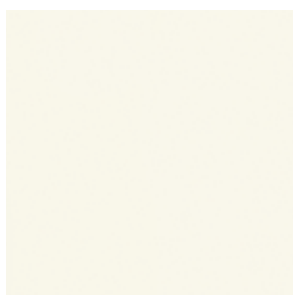
727 Spring



675 Nile



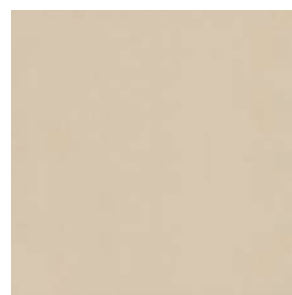
674 Jakarta



676 High Noon



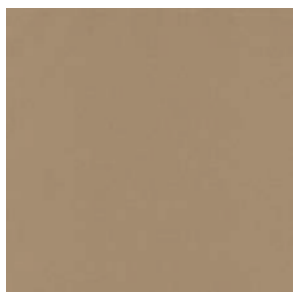
820 Marro



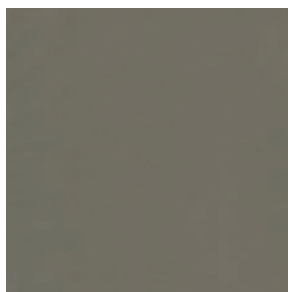
827 Oyster



818 Morning Fog



815 Boulder



819 Camden

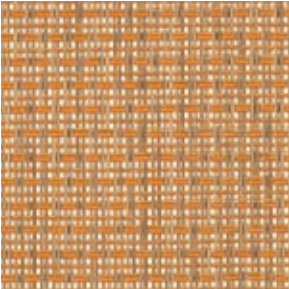


817 Night Sky

versatex® mesh collection

Suncloth® and Versatex® have been arranged in color families to suggest coordinating fabrics.

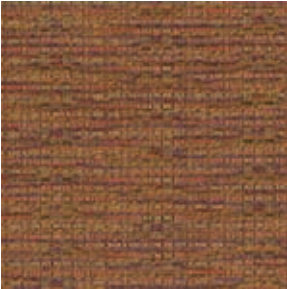
RED ROCK



502 Dominica

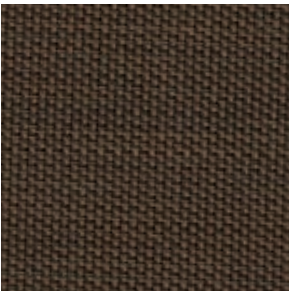


509 Sedona



472 Gooseberry

EARTH AND SAND



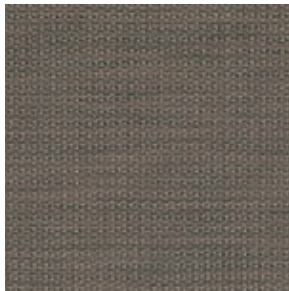
545 Caribe



480 River Rock



505 Ridgecrest



511 Laredo



504 Desert Gold



468 Chaparral



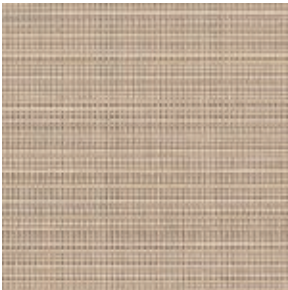
467 Bronze



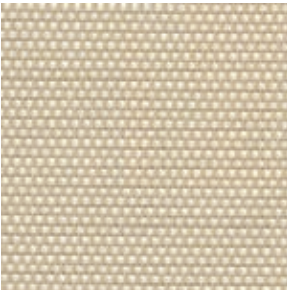
508 Beechcreek



486 Jute



466 Sorrel



543 Sandpiper

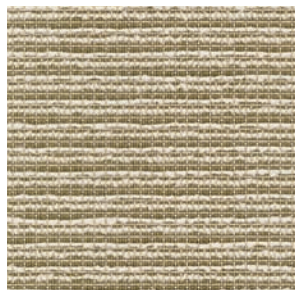


525 Putty

Suncloth® and Versatex® have been arranged in color families to suggest coordinating fabrics.

versatex® mesh collection

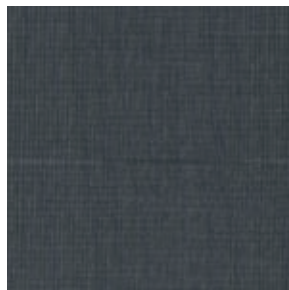
BLACK AND LIGHT



478 Mist



560 White Lite

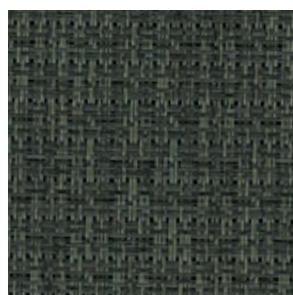


526 Graphite

FOREST WALK



473 Aloeberry



544 Aspen

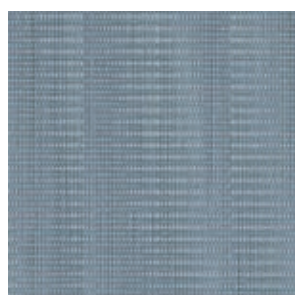


507 Ferndale



515 Willow Creek

NORTH STAR



501 Stardust



524 Greystone



500 Moonlight

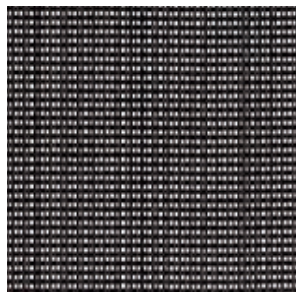


465 Aluminum

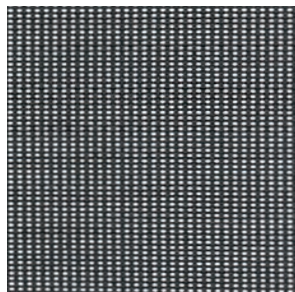


575 Flaxen

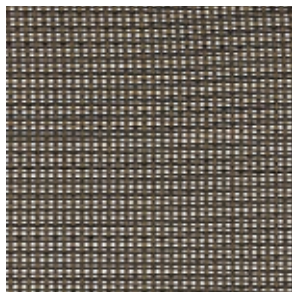
parabolic sling collection



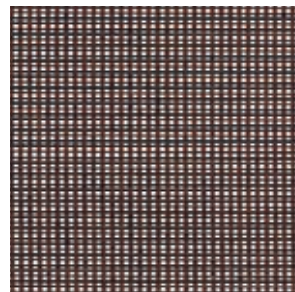
563 Abyss



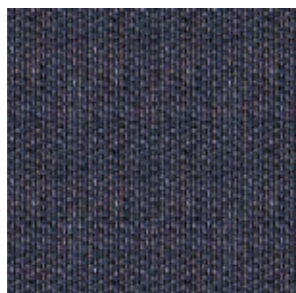
564 Fin



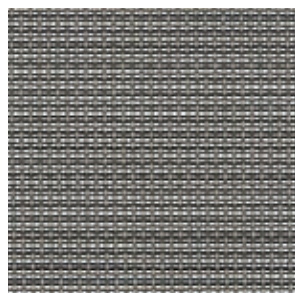
567 Helio



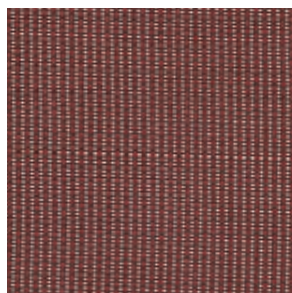
566 Strato



580 Azurite



565 Flite

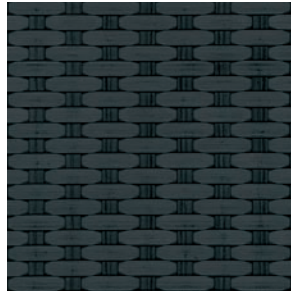


562 Garnet

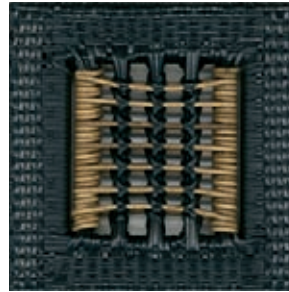




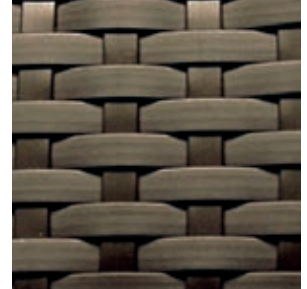
Terra for Kensington



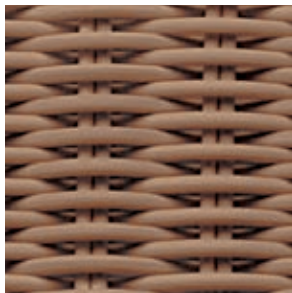
Anthracite for Monaco/Monaco Ville



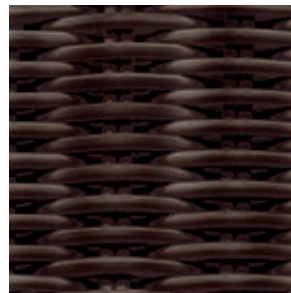
Labrador for Zephyr



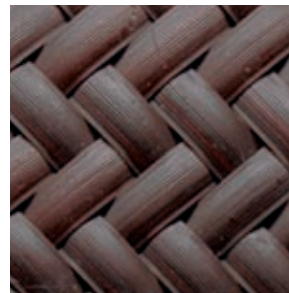
Bronze for Fusion



Rattan for Eastlake



Mahogany for Eastlake



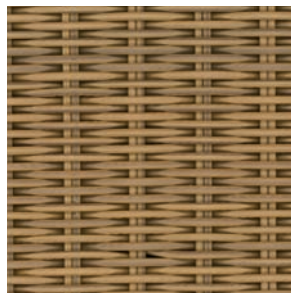
Mahogany for Havana



Cordova for Madrid



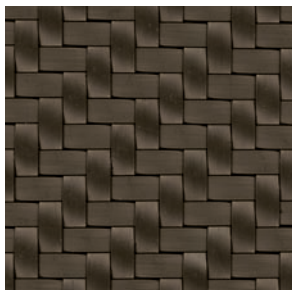
Sumatra for Campaign Woven



Dusk for Campaign Woven



Weathered White for Bay Creek



Sable for Open



Pearl for Open

straps

SMOOTH STRAP AND LACE

straps

14



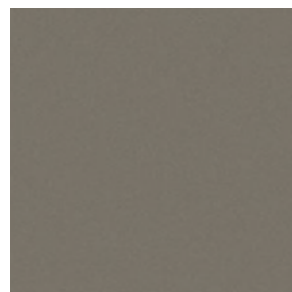
449 White Lite 2" Strap
447 White Lite 1" Lace



261 Sky 1" Lace



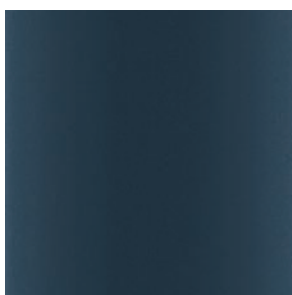
262 Mint 1" Lace



288 Mica 2" Strap



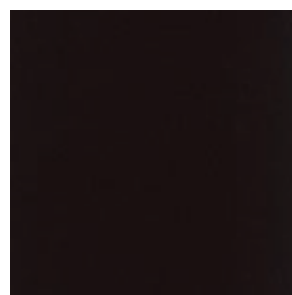
251 Sun 1" Lace



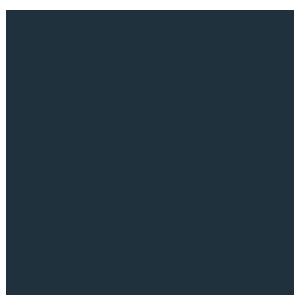
270 Azurite 2" Strap
259 Azurite 1" Lace



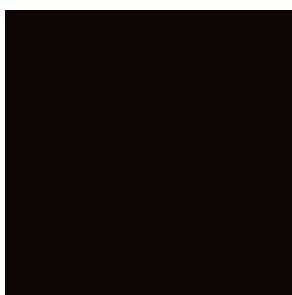
326 Dark Green 2" Strap



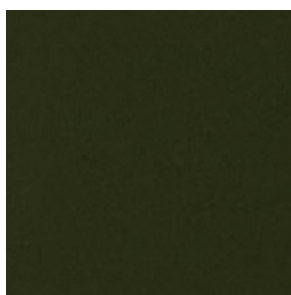
257 Henna 2" Strap
255 Henna 1" Lace



437 Black Jade 2" Strap

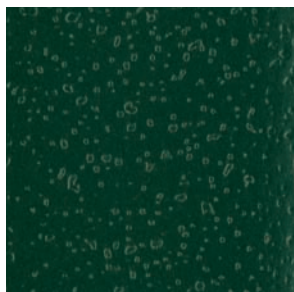


462 Onyx 2" Strap
461 Onyx 1" Lace



253 Kashmir 2" Strap
252 Kashmir 1" Lace

TEXTURED STRAP AND LACE



263 Alpine 2" Strap
254 Alpine 1" Lace

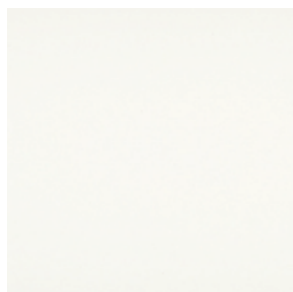


313 Java 2" Strap



363 Versailles 2" Strap

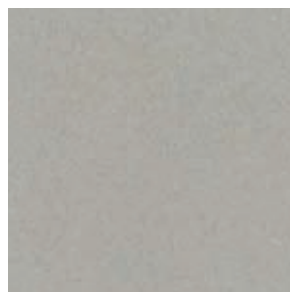
SIGNATURE SMOOTH



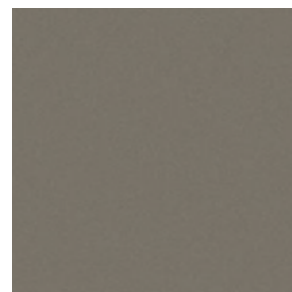
55 White Lite



147 Beachsand



89 Titanium



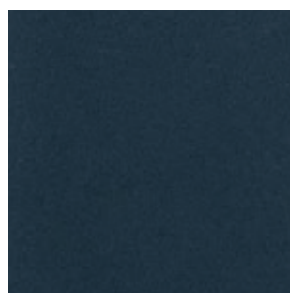
113 Mica



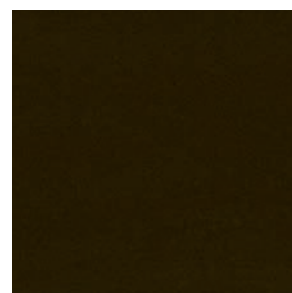
152 Murano



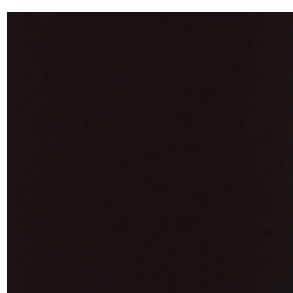
146 Peridot



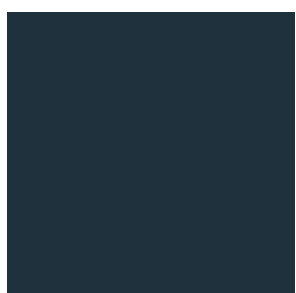
125 Azurite



138 Kashmir



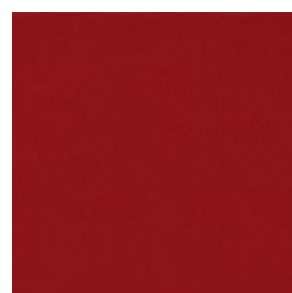
134 Henna



14 Black Jade

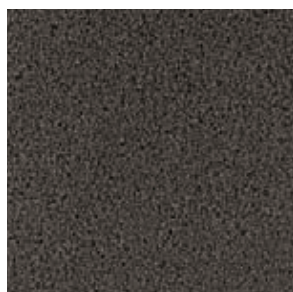


98 Onyx



143 Garnet

SIGNATURE TEXTURED



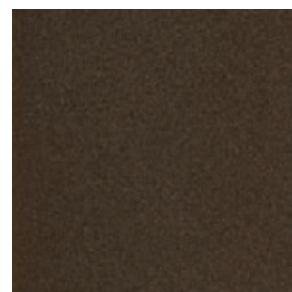
149 Versailles



101 Java



139 Alpine



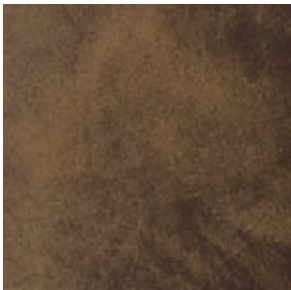
140 Pompeian Gold

finishes

PREMIUM NATURAL



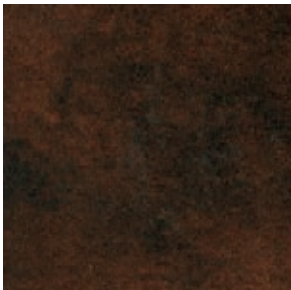
148 White River



117 Jasper



137 Caribou



142 Dakota



145 Windrock

PREMIUM METAL



150 Pewter



151 Nickel

Brown Jordan powder coating process

BUFF AND GRIND

Fabricated, welded frames are prepared for final processing via a tedious, hand process where welded joints are ground to achieve uniform dimensions and the beginning of an aesthetically pleasing visual appearance. The frames are then sanded, buffed and polished to achieve a superior surface, allowing for better adhesion of the top / powder coat.

FIVE-STAGE CHEMICAL PRE-TREATMENT:

Detergent Wash and Clean Water Rinse: The frames are washed in a chemical solution bath to remove any particles remaining from the buff and grind process, as well as any oil residue.

Chromo-coat: The Chromo-coat solution serves two critical purposes: as a sealant and a bonding agent. When viewed under microscope, aluminum is porous. Chromate seals the microscopic fissures, clefts, cracks, or slits that naturally occur in aluminum.

Chromo-coat also leaves a strong bonding agent for the Ultra Fuse™ powder coating. The bonding agent prevents the coating from flaking, peeling or blistering over time.

Final Wash, Rinse, and Heated Dry

After the second solution bath, the frame is rinsed in cold water. This rinse removes any remaining chemicals. The frame is then subject to a heating process to dry.

HYBRID BASE COAT PRIMER SEALANT

The hybrid Primer sealant is an epoxy / polyester blend that treats the metal or frame before it receives its finish coat. The advantage of introducing the Primer is to achieve the highest level of anti-corrosion control, as well to promote superior adhesion of the powder coat.

The epoxy portion of the hybrid blend is a superior bonding agent that is specially formulated to adhere to metal. During the final cure, the coat will not reflow resulting in a harder topcoat surface. This harder surface protects the metal from corrosion.

While the epoxy coat does not reflow in curing, the polyester portion of the hybrid blend does. The outcome is an advanced, integrated bonding that acts two-fold: while the epoxy grabs to the metal, the polyester grabs the top / final powder coat for an absolute superior resistance to paint delaminating. This 'cross link' of the primer and top coat also lends itself to improved color –and –gloss retention.

The Primer coat, by itself, achieves in excess of 4,000 hours of salt spray resistance, far exceeding that of the AAMA's requirement. Therefore, with the introduction of the hybrid Primer, Brown Jordan furniture now achieves even longer salt spray resistance.

POWDER COATING

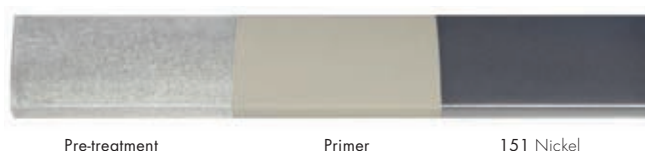
The powder coat finish is applied to the frame surface by an electrostatic technique. The electrostatic process allows for a complete and uniform surface coating throughout all areas of the frame, including the bends and corners of the frame. The result is an attractive, durable, high-quality finish.



SIGNATURE FINISH



METAL PREMIUM FINISH



NATURAL PREMIUM FINISH



PUBLISHED SEPT 2009

Brown Jordan reserves the right to make minor design changes or modifications and to discontinue furniture items, finish colors, and lace, strap, and resinweave colors without notice. Printed colors cannot be guaranteed for accuracy. Stripes and ribbed fabrics run from front to back (top to bottom), except as noted in the price list. Please contact Customer Service for special requirements. It is the policy of Brown Jordan to apply for trademarks and design and utility patents during product development. These trademarks and patents are rigorously enforced.