



webster™

webster

Out with the dull, uncomfortable, and bulky, in with Webster, full of personality, space-saving functionality, and surprising comfort.

Our newest multi-purpose chair has something fresh for everyone: Designers love Webster's clean, modern lines and range of color and finish choices; building or facility managers love its stackability and near-indestructibility; and everyone who sits to work, meet, or learn loves its cool looks and human-centered comfort. Webster is the inspired way to create more inspiring environments—for everyone.

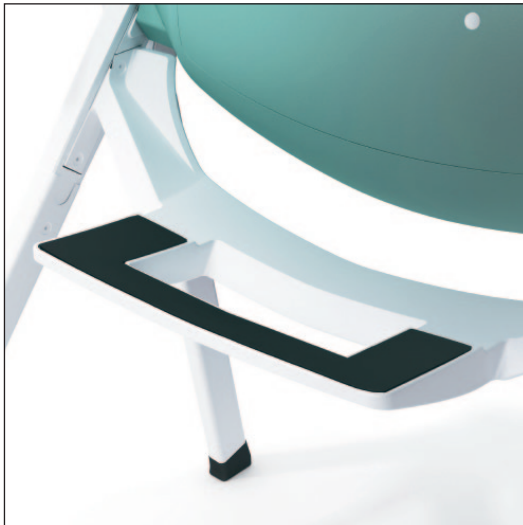




3



21103 purple martin; silver frame 21103 peacock; white frame; black arm cap 21546 (left tablet) peacock; white frame; black bear urethane
21103 goldfinch; silver frame 21100 falcon; charcoal frame



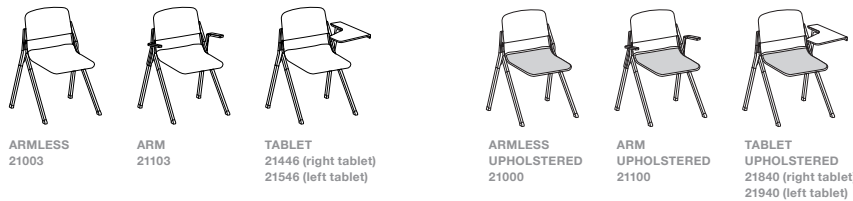


Webster is the stackable chair that hangs tough.



7





OW 24" (26" w/ arm) (27.5"-33" w/ tablet) OH 34" (34"-40" w/ tablet) OD 23" (27.5" w/ tablet) AH 26" SH 18" WT 14.5 lb (16.5 lb w/ arm)
(25 lb w/ tablet) STACK 5 floor (w/ or w/o tablet) UPHOLSTERED: SH 19" WT +2 lb STACK 5 floor (w/ or w/o tablet) COM 0.6 yd

fixtures webster

lovely to look at, comfy to sit in, ready for anything

FEATURES

FLEXIBLE AND FUNCTIONAL moves easily and then folds, nests, and stacks (even with a tablet arm)

HUMAN-CENTERED COMFORT our own biomechanics spring system in the frame allows supportive, intuitive back movement for sitters of all sizes. Warranted up to 300 lbs.

PERSONALITY AND STYLE 15 ABS & glass filled polypropylene colors and many ways to mix and match materials and finishes add up to the right chair for you

COMPACT STORAGE infinite nesting and stacks up to 5-high, even with tablet

OPTIONS

ARMS • CASTERS • TABLET • UPHOLSTERED SEAT PAD

DESIGN

bangdesign

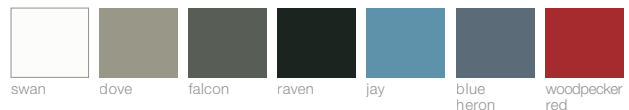
ENVIRONMENT

LEED Webster's recycled content exceeds 20% contributing to LEED Credits MR4.1 & 4.2

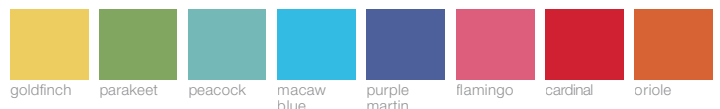
INDOOR AIR QUALITY Webster conforms to SCS Indoor Advantage™ Gold; ANSI/BIFMA Furniture Emissions Standard (M7.1/X7.1-2007) for the seating parameters; California Specification 01350 (V1.1) for the seating parameters and School Classroom parameters; and ANSI/BIFMA e3-2010 (7.6.1 & 7.6.2) for seating parameters

SUSTAINABILITY ANSI/BIFMA e3-2010 level™ certification pending

SEAT AND BACK - ABS & GLASS FILLED POLYPROPYLENE classic colors



SEAT AND BACK - ABS & GLASS FILLED POLYPROPYLENE evolving colors



FRAME FINISH - PAINTED EPOXY



ACCENT/TRIM COLOR (GLIDES, CASTERS, STACKING PADS, & ARM PADS)



TABLET SOLID LAMINATES



TABLET URETHANE EDGE COLOR



fixturesfurniture

Fixtures Furniture by izzy+ fixturesfurniture.com 800.821.3500

FEATURED ON THIS PAGE: 21003 purple martin; silver frame, casters

ON COVER: 21003 purple martin; silver frame, casters



©2011 WT-FIX