

NUVO

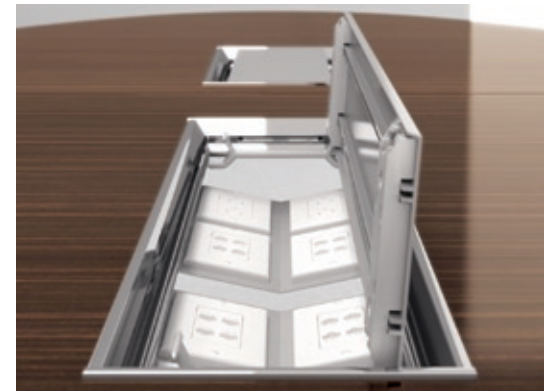


krug



NUVO

An innovative new design that makes tables fast and easy to assemble, and re-configure. Stunningly beautiful (yet durable) materials: gloss-finished aluminum, the highest grade quarter cut and rift cut veneers, as well as solid surface, laminates and glass. Artfully-designed connectivity and cable management, so that meetings mesh seamlessly with conferencing technology. Nuvo is, well . . . new, in ways that make it an advancement in the evolution of collaborative space.



Nuvo Console: integrated power, data, audio and visual

NUVO | MEDIA

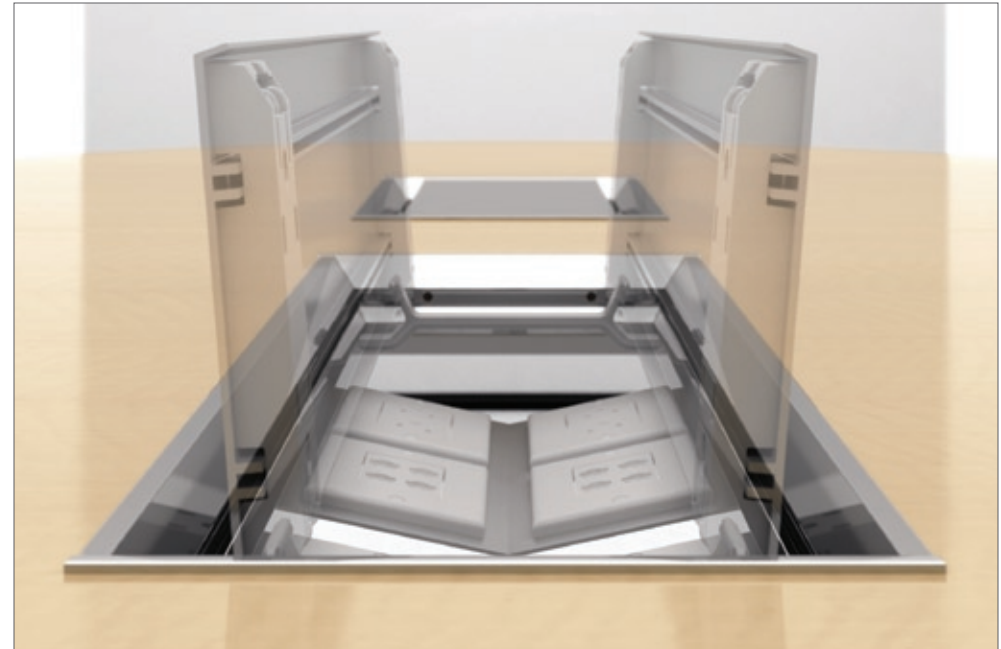
Video conferencing is integrated into the meeting room with Nuvo's Visio table, which provides clear sight lines to the video conferencing camera and monitor mounted on the Nuvo Media Wall. The Media Wall can be wall-mounted on it's own, behind and above credenzas, or even built into a credenza that raises the TV monitor when in use, and stores it safely when not in use.



Media Wall



Sliding Door Media Board



Consoles open on both sides





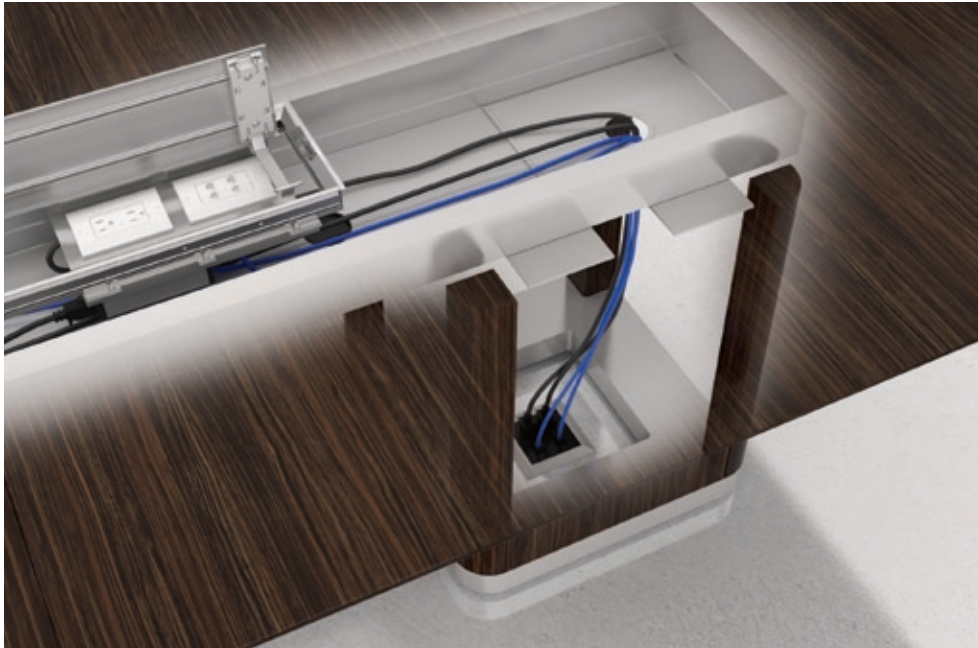
Finish: Clear Zebrawood



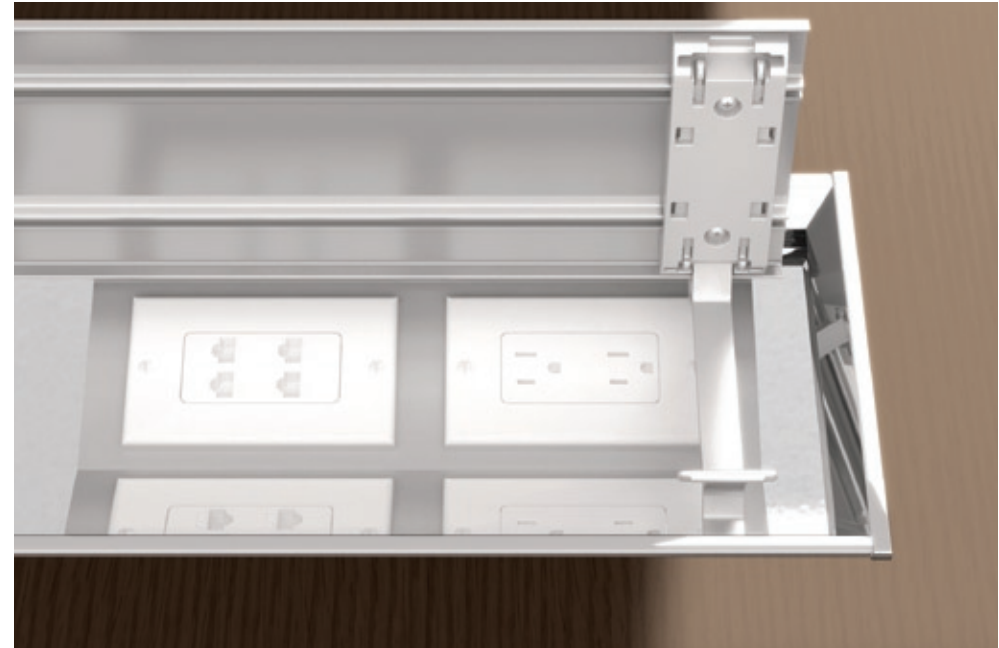
Power/Voice/Data cable from device to Console

NUVO | CONNECTIVITY

Nuvo Consoles provide complete connectivity solutions (either in pre-configured or custom configurations), creating table-top power/data/audio/visual modules for every conferencing technology. Best of all, they're easily re-configured, changed and added to - because they're made with the faceplates and components used by every electrician and conferencing technology specialist. So Nuvo tables will never become outdated or obsolete - they're designed to be made "new" again and again.



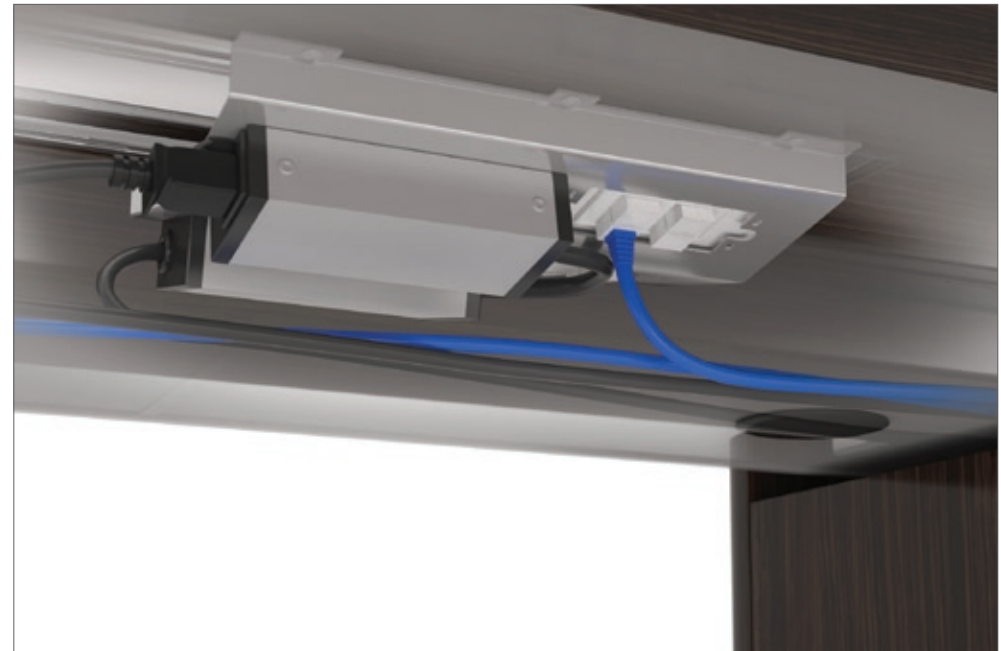
Cable management from cable trough, through base to floor monument



PowerData Module

NUVO | CABLE MANAGEMENT

Nuvo's unique under-top structure provides the cable management trough system underneath the table-top Consoles, with ample capacity for channeling cabling to the floor. That structure is also designed for fast assembly and dis-assembly of the tables: bases are positioned, then the top sections connected. Enclosed bases have concealed access doors, while the Formed Aluminum base has an optional cable channel for cable management.



Cable management from PowerData Module



Spine Cable Manager to floor monument



Cable Channel option for Formed Aluminum base



Finish: Glass Top

NUVO | HUMAN FACTORS DESIGN

Meeting rooms can be high traffic areas, with lots of different users every day. Many Nuvo components feature rounded corners, so accidental contact with tops and bases isn't painful or damaging, and so an additional user can more easily be added around a fully-occupied table. Whether its one table or one hundred, we make every one to your specifications, with precision machining and artisanal pride, and the high standards forged from over 130 years of craftsmanship.



Base cable access







Finish: Charcoal Grey Laminate



The mark of responsible forestry

All products are air emissions certified and are available as FSC® certified

krug

solutions@krug.ca | www.krug.ca | 1.888.578.KRUG

Finish on Cover: Natural Walnut