

Specification Guide & MSRP Price List

Model 3SM - Accessory Rail - Rollin Whiteboard

3SM4 - 01 - 37 54 - MDG - WB

Model

3SM4	4 Wheel
3SM3	3 Wheel
3SMF	Freestanding

Frame Color

01	Tiger Silver
----	--------------

Width

24"
30"
37"
42"
49"
61"

Upper Core

WB	Whiteboard-Both sides
FRZ	Freeze Polycarbonate
FRO	Frosted Acrylic
F__	Fabric - Tackable
WB/F__	Whiteboard-(side 1)/Fabric-(side 2)
GCL	Glass-Clear

Lower Core

MDG	Folkstone Grey MDF
MDB	Black MDF
F__	Fabric - Tackable
PS	Perforated Steel
SLM	Maple Laminate

Height

48"
54"
62"
72"

Description:

The frame is constructed using aluminum extrusion. Mobile units include our stylish metal feet with 3" locking dual casters.

All metal parts are powder coated for an aesthetic and durable finish.

Whiteboard and fabric cores are constructed using a solid, sound absorbing material to reduce noise levels.

The desk height Accessory Rail accepts most brands of slat wall accessories.

Rollin whiteboards are manufactured in the USA.

Custom sizes, colors and core materials are available.

Core Codes & Grades

Upper Core

Codes		Grade
WB	Whiteboard-Both sides	A
FRZ	Freeze Polycarbonate **	A
FRO	Frosted Acrylic **	B
F__	Fabric - Tackable (Group 1 or 2)	B
WB/F__	Whiteboard (side 1)/Fabric (side 2)-(Group 1 or 2)	B
GCL	Glass - Clear *	C

Lower Core

Codes		Grade
MDG	Grey-Folkstone MDF	A
MDB	Black MDF	A
F__	Fabric-Tackable *** (Group 1 & 2)	B
PS	Perforated Steel	B
SLM	Maple Laminate	B

* Clear Glass is tempered and will accept dry-erase, permanent markers or grease pens with no worries about cleaning.

** These materials are not suitable for use as a whiteboard.

*** Lower fabric cores are only available with fabric on both side.

MSRP Pricing

Standard Sizes W x H	Core Options	Core Options	Core Options	Core Options
	Grade A	Grade B	Grade C	Up Charge for Grade B
24" x 48"	\$706	\$716	\$833	+\$91
24" x 54"	\$742	\$774	\$889	+\$91
24" x 62"	\$794	\$799	\$957	+\$91
24" x 72"	\$855	\$879	\$1,046	+\$91
30" x 48"	\$768	\$766	\$899	+\$112
30" x 54"	\$813	\$831	\$965	+\$112
30" x 62"	\$896	\$884	\$1,047	+\$112
30" x 72"	\$962	\$980	\$1,192	+\$112
37" x 48"	\$811	\$825	\$977	+\$125
37" x 54"	\$856	\$895	\$1,056	+\$125
37" x 62"	\$937	\$936	\$1,194	+\$125
37" x 72"	\$1,055	\$1,078	\$1,320	+\$125
42" x 48"	\$875	\$873	\$1,037	+\$138
42" x 54"	\$930	\$949	\$1,163	+\$138
42" x 62"	\$1,019	\$1,021	\$1,272	+\$138
42" x 72"	\$1,117	\$1,158	\$1,413	+\$138
49" x 48"	\$915	\$930	\$1,151	+\$161
49" x 54"	\$970	\$1,007	\$1,251	+\$161
49" x 62"	\$1,060	\$1,065	\$1,376	+\$161
49" x 72"	\$1,159	\$1,215	\$1,537	+\$161
61" x 48"	\$1,079	\$1,078	\$1,324	+\$201
61" x 54"	\$1,151	\$1,179	\$1,444	+\$201
61" x 62"	\$1,331	\$1,281	\$1,637	+\$201
61" x 72"	\$1,408	\$1,471	\$1,832	+\$201

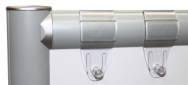
Please refer to our website for up to date pricing.

Accessories

MSRP

Flip Chart Clip Set (Item # FFC)

\$30



Fits on all models
An ideal accessory for adding a flip chart to any of our partitions for presentations or meetings.
Clear polycarbonate - 3" x 1-1/2"

Marker Tray - S-Series (Item # S-WBTR)

\$59



Keeps your markers and eraser organized and within reach
Upright storage for 6 markers
Tray space for eraser and more
Fits anywhere along the Accessory Rail and on both sides
Metal construction with a durable powder coated finish
Measures 12" x 5" x 2"
Markers and eraser not included

Pen Cup - S-Series (Item # S-PC)

\$30



Keeps your markers and eraser within reach
Fits anywhere along the Accessory Rail and on both sides
Frosted finish
2" x 3 1/4" opening 4" deep
Markers and eraser not included

Cup Holder - S-Series (Item # S-CH)

\$30



Keeps your drink close at hand during a presentation
Fits anywhere along the Accessory Rail and on both sides
Frosted finish
3" diameter opening 1 3/4" deep