

BRETFORD BASICS™

20 UNIT NETWORK READY LAPTOP CART

MDMLAP20NR

The MDM Network Ready Laptop Cart stores, charges, and updates 20 laptops and comes standard with Front & Rear Lockable Doors.



Made In The USA



FEATURES

- The MDMLAP20NR ships fully assembled and pre-wired with 21 ethernet cables. A dedicated space for a 19" rack-mounted network switch is located in the upper right of the back compartment.
- Cart features 2 shelves with 10 compartments per shelf for up to 20 laptops or netbooks. Laser printed numbers provide identification on every device slot and the plastic shelf dividers may be removed for storing larger items.
- The MDMLAP20NR includes a unique "Power Manager" that works with a standard 15 Amp electrical circuit and is designed to analyze power requirements. The system constantly evaluates the amount of power that can be drawn and safely and efficiently distributes current to the devices in a "Round Robin" cycle. The "Power Manager" not only prevents circuit tripping, but also allows each set of device batteries to cool down between charging cycles, thereby extending their life.
- The "Power Manager" also features temperature sensors that control two fans located on the side of the cart. Extensive testing has been performed to ensure that the heat dissipation measures featured in the cart maintain a temperature within the laptops' operating limits.
- A full-access door in front for the user, and a full access door in rear for the IT Administrator. Security is provided by the solid steel construction and unique locking handles that can be opened using either a re-programmable combination or a key.
- Cable management in the front positions power cords and network cables to plug into the laptops. Cord management in the back of the cart is provided by removable plates with Velcro® straps to secure cords and adapters. The interior Divider Panel has holes that allow the cables to pass through to the front of the cart.
- Easy rolling 5" casters all swivel for tight spaces and two may be fixed to provide added control when moving down a hall.
- Constructed using an average 30% post-consumer recycled steel content and finished in environmentally friendly powder paint. Steel components are 100% recyclable at the end of the product life cycle. Pending UL60950 Certification for safety of technology equipment and GREENGUARD Indoor Air Quality (IAQ) Certification for low-emitting products.
- Made in the USA.



DIMENSIONS

Overall: 33"w x 25"d x 43"h

Storage Slots: 1-7/8"w x 11 7/8"h x 15-1/2"d

COLOR & FINISH

(CTAL) Concrete powder paint with Aluminum tubes.

WEIGHT, SHIPPING DIMENSIONS & UPC CODE

Weight: 170 lbs., Freight class 125

Shipping Dimensions: 39"w x 31"d x 50"h

Ships assembled in one (1) carton

MDMLAP20NR-CTAL UPC Code: 0 96633 365388

ENVIRONMENTAL SPECIFICATIONS

Carts are constructed with "prime" steel, which has a 25% to 35% post-consumer recycled content. All steel components are recyclable at the end of the product life cycle.

MADE IN THE USA

MDM series laptop storage carts are made at Bretford's Chicago area manufacturing facility using union labor.

SUGGESTED SPECIFICATIONS

MDM Network Ready Laptop Carts come fully assembled and have one, 22 1/4"w x 15-1/2"d, 18-gauge steel shelf and one, 24 1/4"w x 15-1/2"d, 18-gauge steel, bottom shelf. Top and bottom shelves can be divided with polypropylene dividers that create 10 compartments, per shelf. Dividers may be removed to accommodate larger equipment. Cabinet structure comes pre-assembled and consists of a pre-welded, 14-gauge steel, oval tubing frame and 18-gauge, pre-welded, steel side panels. One 18-gauge steel door mounts to the front of the cabinet and secures using a built-in handle lock accessible by either combination or key. Carts come with one 18-gauge, steel, rear door that secures with the same handle lock as the front door. Unit features a dual-handle design and four, 5" heavy-duty, plate mounted casters. All four casters swivel for maneuverability in tight spaces, with the ability to lock two into a non-swivel mode when transporting the cart long distances. Two casters, on opposite ends, have locking brakes to prevent rolling. Ships assembled by truck only.

POWER MANAGEMENT

Cart comes with four, 6-outlet power strips plugged into the "Power Manager" which uses a standard 15-amp wall outlet to regulate power in the cart. The system constantly evaluates the amount of power that can be drawn and safely and efficiently distributes current to the devices in a "Round Robin" cycle. This technique allows cool-down time, extending battery life. "Power Manager" is attached to the upper back left section of the interior cabinet and is accessed through the rear doors. LED indicator lights and one auxiliary outlet are included on the side of the cart. The power management unit is overload protected and includes a 9' power cord.

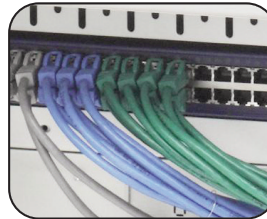
NETWORK CAPABILITY

Cart comes pre-wired from the factory with 20 network cables secured in the rear cable management compartment. A dedicated space for a 19" rack-mounted network switch is located in the upper right of the back compartment and an additional network cable is included to connect the user-provided switch to the external network through the exterior Ethernet port located on the side of the cart. The "Power Manager" features temperature sensors that control two fans located in the middle, front of the cart. Extensive testing has been performed to ensure that the heat dissipation measures keep the cart's internal temperature within the laptops' operating limits.



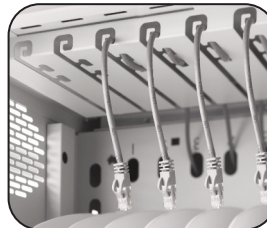
MDMLAP20NR:

COMES WITH ETHERNET CABLES PRE-WIRED TO EACH STORAGE SLOT. REAR DOOR ALSO ALLOWS ACCESS TO REMOVABLE CABLE STORAGE PLATES.



READY FOR NETWORK SWITCH:

COMES WITH ETHERNET CABLES PRE-WIRED AND READY TO BE PLUGGED INTO THE NETWORK SWITCH IN THE REAR OF THE CART.



CABLE MANAGEMENT:

CABLES ARE THREADED THROUGH THE DIVIDER PANEL TO THE FRONT OF THE CART WHERE A CABLE MANAGEMENT CHANNEL GUIDES THEM TO EACH STORAGE SLOT.



EASE OF ORGANIZATION:

REMOVABLE PLATES AND VELCRO STRAPS ALLOW POWER ADAPTERS TO BE ORGANIZED WHILE SEATED AT YOUR DESK.



LOCKING DOORS:

UNIT IS SECURED WITH A UNIQUE BUILT-IN HANDLE LOCK ACCESSIBLE BY EITHER A RE-PROGRAMMABLE COMBINATION OR A KEY