

PRODUCT SHEET

AMMA 6032

60 x 32 x 21

Redefined massage. Ideal comfort.



© BAINULTRA®

FEATURES

Installation type	- Drop-in - Alcove (3 walls)
No. of bathers	1
Raised seat	1
Heated backrest	1
Heated headrest	1
Inverted V	1
Control	MiaPlus
ThermoMasseur® bath	\$
Soaker bath	N/A

THERAPIES

Chromatherapy 2-LED	\$
Sound Therapy (Euphonia™ System)	\$

COLORS

Standards

White	Bone	Biscuit	Almond

Optionals

Black	Mexican sand	Innocent blush	Cashmere	Sandbar	Grey

WARRANTY

Controls*	5 years
Bath & turbine*	20 years
*Some restrictions apply www.bainultra.com/warranty	



IMPORTANT: KEEP THE ORIGINAL. PLEASE MAKE COPIES.

AMMA®: AMMA 6030, **AMMA 6032**, AMMA 6036, AMMA 6636, AMMA OVAL 6638, AMMA 6060, AMMA 7048, AMMA 7236, AMMA 7242, AMMA OVAL 7242, AMMA OVAL 7242 FREESTANDING

BainUltra®

The quest for your wellness™
www.bainultra.com

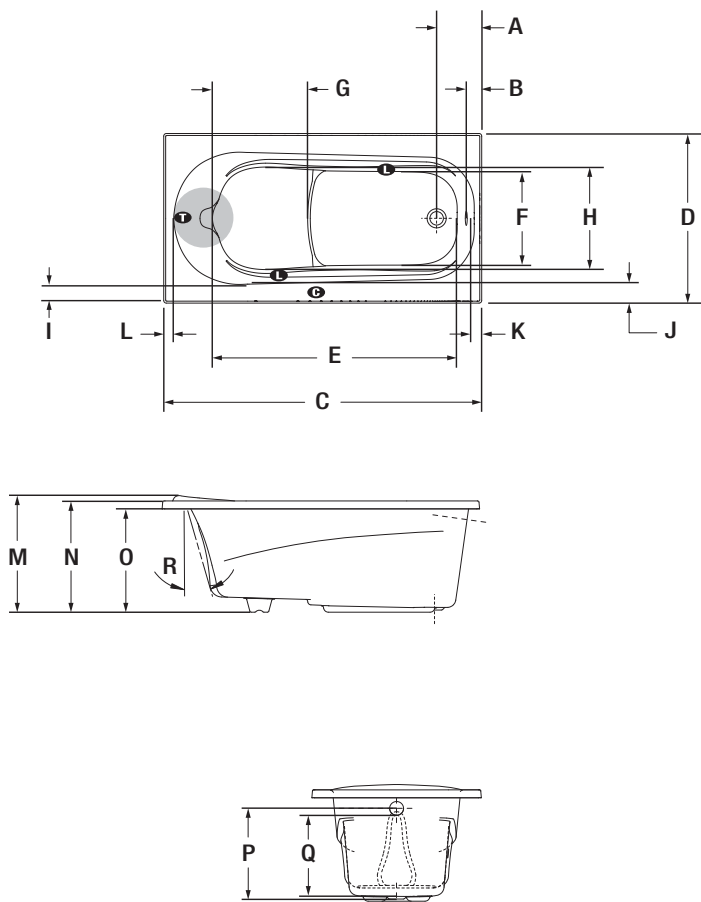
AMMA 6032 60 x 32 x 21

ACCESSORIES - OPTIONAL

Skirts	Littora \$	Elegance \$
Drain & overflow	D-10 (17" - 22") - Chrome - White, Biscuit, Bone - Brass - Brushed nickel, Polished nickel, Oil-rubbed bronze	 \$ \$ \$ \$

Control	MiaMulti	\$
Other	Optional tile flange. (specify right or left)	\$

TOTAL PRICE \$



LETTER	DESCRIPTION	MEASURE
A	Outside edge to center drain	8 1/2"
B	Outside edge to overflow	2 1/2"
C	Total length	60"
D	Total width	32"
E	Bathing well length	46 1/4"
F	Bathing well width at foot area	17 1/2"
G	Raised seat length	18"
H	Raised seat width	19 3/8"
I	Deck width (narrowest point)	3 1/8"
J	Deck width (widest point)	3 7/8"
K	Deck width at drain end	2"
L	Deck width at backrest end	1 7/8"
M	Total height to headrest	22"
N	Height from bottom of tub to top deck	21"
O	Height from bottom of tub to bottom of lip	19 1/2"
P	Height from drain to center of overflow	17"
Q	Maximum water level	15 1/4"
R	Slope of backrest	16°

T Indicates turbine position
L Indicates LED light position
C Indicates control position when factory-installed

AMMA 6032 TECHNICAL SPECIFICATIONS

Jets	45	Hot water supply required	Should be 70% of water capacity of tub or greater.
US gallons	46	Turbine access	Must be at least 18" X 22" to access the pump. Must be connected to a 15 A. 120 V, 60 Hz, protected by a ground-fault circuit interrupter (GFCI) on a dedicated line.
Imp. gallons	39	Standards	All BainUltra products meet and/or exceed the highest quality and certification standards. For further details about BainUltra's product standards, please go to the following link: (www.bainultra.com/standards).
Approx. shipping weight	138 lbs	Our products must be installed by certified professionals only and according to our Owner's Manual as well as federal, provincial/state and local building codes and regulations (www.bainultra.com/documentation).	
Turbine power	755 W		
Air heater	700 W		

1 800 463.2187 | From 8 a.m. to 8 p.m. Monday to Thursday (EST) . From 8 a.m. to 5 p.m. on Friday (EST)

The specifications shown indicate the outer edge dimension and the inside bathing capacity dimension measured at air jets' height. The manufacturer accepts a 1/4" [0.64 cm] variance. There are variations on each product and specifications are subject to change as we improve upon our product as required. The dimensions needed for site preparation and structure building will differ. BainUltra® assumes no responsibility for preparatory work done prior to the product being on site.