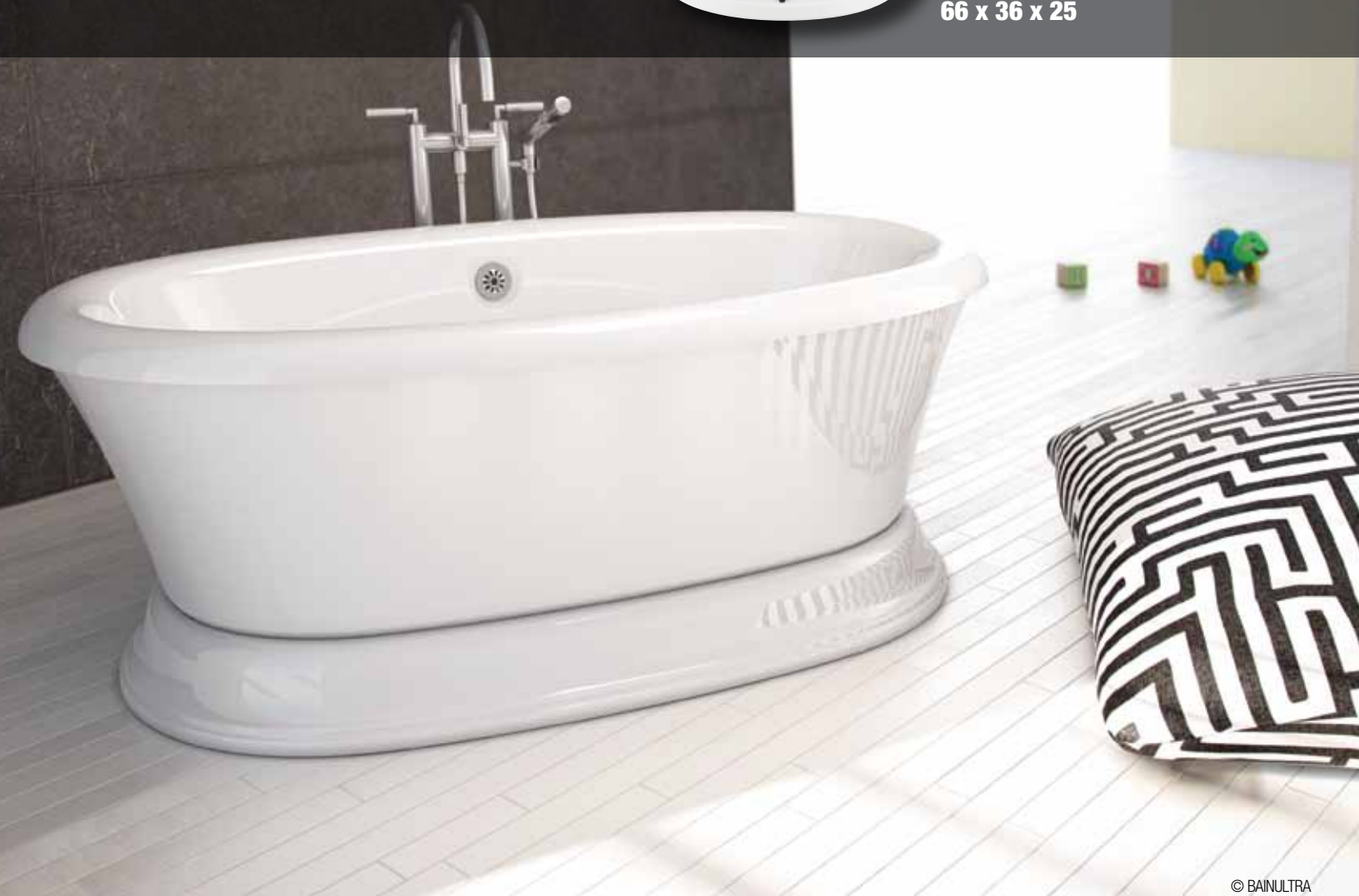




PRODUCT SHEET
NAOS 6636
 66 x 36 x 25



© BAINULTRA

FEATURES

Installation type	Freestanding
Deck	- Flat - Rolled
No. of bathers	1
Heated backrest	1
Control	MiaMulti
ThermoMasseur® bath	\$
Soaker bath	\$

THERAPIES

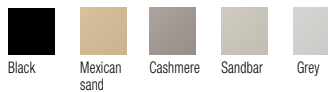
Chromatherapy 2-LED	\$
Sound Therapy (Euphonia® headset)	\$

COLORS

Standards



Optionals



WARRANTY

Controls*	5 years
Bath & turbine*	20 years
*Some restrictions apply www.bainultra.com/warranty	



IMPORTANT: KEEP THE ORIGINAL. PLEASE MAKE COPIES.

NAOS 6636 66 x 36 x 25

ACCESSORIES - OPTIONAL

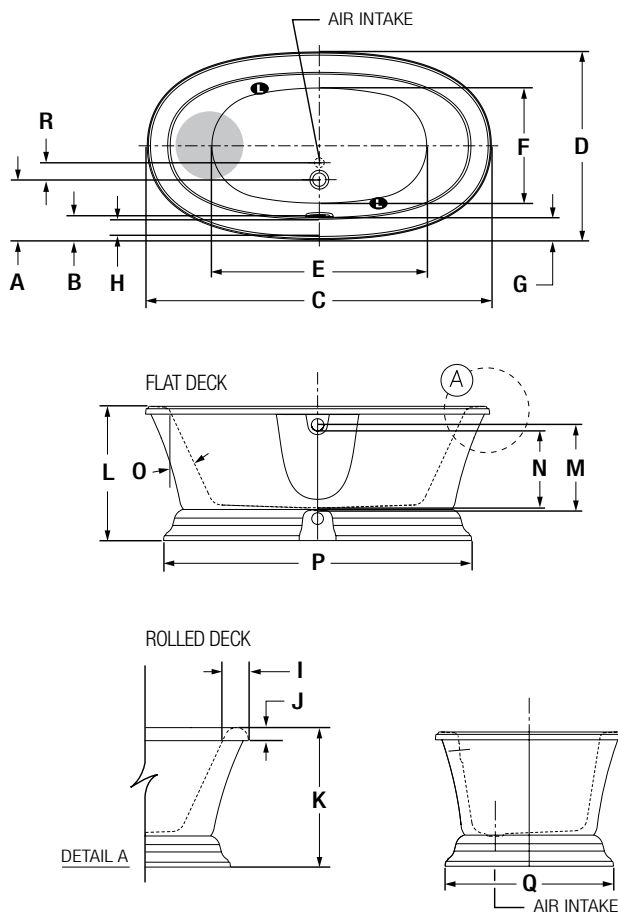
Drain & overflow (Exposed)	D-13 (Balneo) - Chrome - Brushed nickel, Polished nickel, Brass, Unplated - Oil-rubbed bronze	\$ \$ \$ \$
For air supply only	Decorative pipe (1 1/2" x 6") Decorative pipe (1 1/2" x 24") Pipe concealer (3" x 5 1/4") Elbow (45°) Elbow (90°)	\$ \$ \$ \$ \$

Others

- There is a height difference for the rolled deck (see drawing Detail A).
- Faucets must be freestanding or wall mounted.
- The turbine must be remotely installed.
- Control must be wall-mounted.

TOTAL PRICE

\$



LETTER	DESCRIPTION	MEASURE
A	Outside edge to center drain	11 1/2"
B	Outside edge to overflow	4"
C	Total length	66"
D	Total width	36"
E	Bathing well length	42 3/8"
F	Bathing well width	22 1/4"
G	Deck width	4 1/4"
H	Flat surface width	3"
I	Rolled deck width	4 3/4"
J	Height from bottom of lip to top deck	2 1/2"
K	Height from bottom of tub to top deck	26 3/4"
L	Height from bottom of tub to top deck	25 3/4"
M	Height from drain to center of overflow	16 5/8"
N	Maximum water level	14 7/8"
O	Slope of backrest	25°
P	Base length	59 1/8"
Q	Base width	32 1/4"
R	Distance from center air intake to center drain	3 1/4"

● Indicates heated backrest

● Indicates LED light position

NAOS 6636 TECHNICAL SPECIFICATIONS

Jets	38	Hot water supply required	Should be 70% of water capacity of tub or greater.
US gallons	48	Turbine access	Must be at least 18" X 22" to access the turbine. Must be connected to a 15 A. 120 V, 60 Hz, protected by a ground-fault circuit interrupter (GFCI) on a dedicated line. Air vent necessary, 2" X 4" minimum.
Imp. gallons	40	Our products must be installed by certified professionals only and according to our Owner's Manual as well as federal, provincial/state and local building codes and regulations (www.bainultra.com/documentations).	
Approx. shipping weight	265 lbs		
Turbine power	755 W		
Air heater	700 W		

1 800 463.2187 | From 8 a.m. to 8 p.m. Monday to Thursday (EST) . From 8 a.m. to 5 p.m. on Friday (EST)

The specifications shown indicate the outer edge dimension and the inside bathing capacity dimension measured at air jets' height. The manufacturer accepts a 1/4" [0.64 cm] variance. There are variations on each product and specifications are subject to change as we improve upon our product as required. The dimensions needed for site preparation and structure building will differ. BainUltra® assumes no responsibility for preparatory work done prior to the product being on site.