



PRODUCT SHEET

MERIDIAN DUO

60 x 31 x 21



© BAINULTRA

FEATURES

Installation type	Alcove (3 walls)
No. of bathers	1
Heated backrest	1
Control	MiaPlus®
ThermoMasseur® bath	\$
Soaker bath	\$

THERAPIES

Chromatherapy 2-LED	\$
Sound Therapy (Euphonia® headset)	\$

COLORS

Standards



White



Biscuit

WARRANTY

Controls*	5 years
Bath & turbine*	20 years

*Some restrictions apply | www.bainultra.com/warranty**IMPORTANT:** KEEP THE ORIGINAL. PLEASE MAKE COPIES.

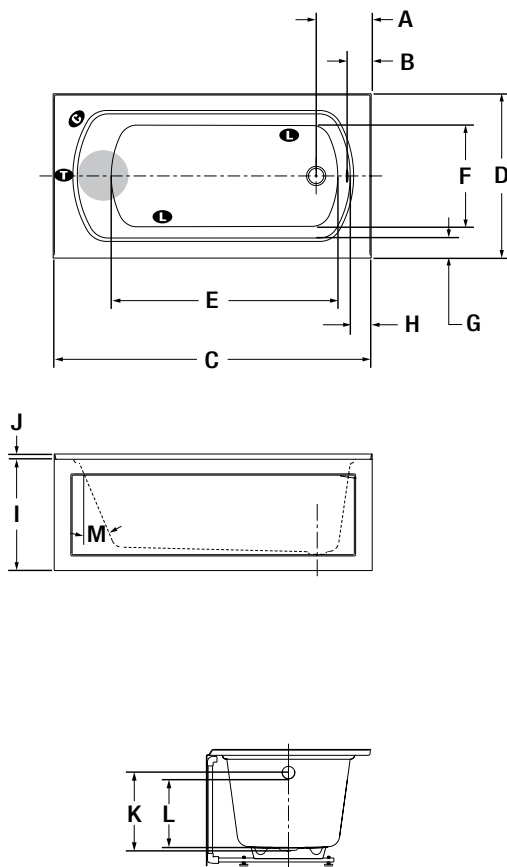
MERIDIAN DUO 60 x 31 x 21

ACCESSORIES - OPTIONAL

Drain & overflow	16" x 35"	
	- Chrome	\$
	- White, Biscuit, Bone	\$
	- Brass	\$
	- Brushed nickel, Polished nickel, Oil-rubbed bronze	\$

Integrated tile flange	Included (specify right or left)
Control	MiaMulti® \$
Other	Integrated skirt with removable panel

TOTAL PRICE \$



LETTER	DESCRIPTION	MEASURE
A	Outside edge to center drain	10 3/8"
B	Outside edge to overflow	5 7/8"
C	Total length	60"
D	Total width	31"
E	Bathing well length	42 3/4"
F	Bathing well width	19 5/16"
G	Deck width	3 1/4"
H	Deck width at drain end	4"
I	Height from bottom of tub to top deck	21"
J	Tile flange height	1"
K	Height from drain to center of overflow	14 7/8"
L	Maximum water level	13"
M	Slope of backrest	23°

T Indicates turbine position
L Indicates LED light position
C Indicates control position when factory-installed

MERIDIAN DUO TECHNICAL SPECIFICATIONS

Jets	36	Hot water supply required	Should be 70% of water capacity of tub or greater.
US gallons	35	Turbine access	The removable apron provides access to turbine and air intake. Must be connected to a 15 A, 120 V, 60 Hz, protected by a ground-fault circuit interrupter (GFCI) on a dedicated line.
Imp. gallons	29	Our products must be installed by certified professionals only and according to our Owner's Manual as well as federal, provincial/state and local building codes and regulations (www.bainultra.com/documentation).	
Approx. shipping weight	136 lbs		
Turbine power	755 W		
Air heater	700 W		

1 800 463.2187 | From 8 a.m. to 8 p.m. Monday to Thursday (EST) . From 8 a.m. to 5 p.m. on Friday (EST)

The specifications shown indicate the outer edge dimension and the inside bathing capacity dimension measured at air jets' height. The manufacturer accepts a 1/4" [0.64 cm] variance. There are variations on each product and specifications are subject to change as we improve upon our product as required. The dimensions needed for site preparation and structure building will differ. BainUltra® assumes no responsibility for preparatory work done prior to the product being on site.