

PRODUCT SHEET

TMU 5454

54 x 54 x 21

An advanced bath. A better massage.



© BAINULTRA®

FEATURES

Installation type	- Drop-in - Corner
No. of bathers	2
Raised seats	2
Heated backrest	1
Heated headrest	1
Inverted V	2
Armrests	2
Grab bars (color match)	2
Wood seat - shelf	Included
Control	MiaPlus
ThermoMasseur® bath	\$
Soaker bath	N/A

THERAPIES

Chromatherapy 2-LED	\$
Sound Therapy (Euphonia™ System)	\$

COLORS

Standards

White	Bone	Biscuit	Almond

Optionals

Black	Mexican sand	Innocent blush	Cashmere	Sandbar	Grey

WARRANTY

Controls*	5 years
Bath & turbine*	20 years
*Some restrictions apply www.bainultra.com/warranty	



IMPORTANT: KEEP THE ORIGINAL. PLEASE MAKE COPIES.

TMU: TMU 2500, TMU 2550, TMU 2600, TMU 2602, TMU 2650, TMU 2702, **TMU 5454**, TMU 6060

BainUltra®

The quest for your wellness™
www.bainultra.com

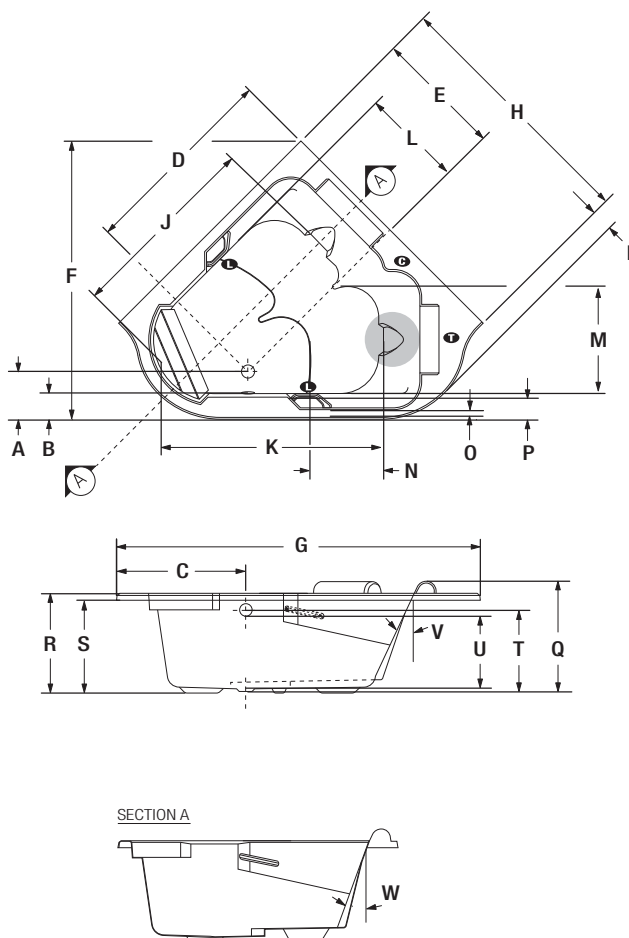
TMU 5454 54 x 54 x 21

ACCESSORIES - OPTIONAL

Skirt		(Step with wood insert)	(Without step)
	SJ-3 TMU 5454	\$	\$
Step (alone)	With wood insert		\$
Clear acrylic grab bars	With Chrome, Brass or Brushed nickel inserts		\$
Drain & overflow	D-10 (17" - 22") - Chrome - White, Biscuit, Bone - Brass - Brushed nickel, Polished nickel, Oil-rubbed bronze		\$ \$ \$ \$ \$

Control	MiaMulti	\$
Cutting template	# 90000027	
Others	- Optional tile flange. \$ (specify right or left) - Overall dimensions are 58 3/8" x 58 3/8" (see drawing for details).	

TOTAL PRICE \$



LETTER	DESCRIPTION	MEASURE
A	Outside edge to center drain	11 7/8"
B	Outside edge to overflow	5 7/8"
C	Sidewall to center drain	27 1/8"
D	Sidewall to center drain	40 3/8"
E	Sidewall to center drain	25"
F	Total length	58"
G	Total width	76"
H	Sidewall length	53 7/8"
I	Length from sidecorner to front curve	4 1/2"
J	Bathing well length	40 7/8"
K	Bathing well length	45"
L	Bathing well width	19"
M	Bathing well width	20 3/4"
N	Raised seat length	17"
O	Deck width (narrowest point)	1 5/8"
P	Deck width (widest point)	5 3/4"
Q	Total height to headrest	23"
R	Height from bottom of tub to top deck	21"
S	Height from bottom of tub to bottom of lip	19 1/2"
T	Height from drain to center of overflow	16 5/8"
U	Maximum water level	14 7/8"
V	Slope of backrest	26°
W	Slope of backrest	20°

T Indicates turbine position
L Indicates LED light position
C Indicates control position when factory-installed

TMU 5454 TECHNICAL SPECIFICATIONS

Jets	54	Hot water supply required	Should be 70% of water capacity of tub or greater.
US gallons	61	Turbine access	Must be at least 18" X 22" to access the pump. Must be connected to a 15 A. 120 V, 60 Hz, protected by a ground-fault circuit interrupter (GFCI) on a dedicated line.
Imp. gallons	51	Standards	All BainUltra products meet and/or exceed the highest quality and certification standards. For further details about BainUltra's product standards, please go to the following link: (www.bainultra.com/standards).
Approx. shipping weight	155 lbs	Our products must be installed by certified professionals only and according to our Owner's Manual as well as federal, provincial/state and local building codes and regulations (www.bainultra.com/documentation).	
Turbine power	755 W		
Air heater	700 W		

1 800 463.2187 | From 8 a.m. to 8 p.m. Monday to Thursday (EST) . From 8 a.m. to 5 p.m. on Friday (EST)

The specifications shown indicate the outer edge dimension and the inside bathing capacity dimension measured at air jets' height. The manufacturer accepts a 1/4" [0.64 cm] variance. There are variations on each product and specifications are subject to change as we improve upon our product as required. The dimensions needed for site preparation and structure building will differ. BainUltra® assumes no responsibility for preparatory work done prior to the product being on site.