

Aesthetic,
Performance, and
Maintenance free
design



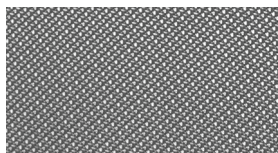
CHROMAVISION™

Pulp Studio's Chromavision™ was created with both functionality and aesthetics in mind. Its futuristic composition lends characteristics that are both appealing to the eye and efficient in its performance.

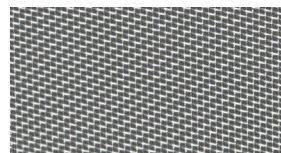
Chromavision™ utilizes high precision fabrics as a substrate for its unique metallic coating. When applied to just one side of the fiber mesh, the metallic coating displays a lustrous reflective look.

Additionally the reflective nature of the coating has a significant influence on thermal conductivity to the opposite side of the glass. The reverse side of the fabric is neutral in color and provides the feel of a pleasantly shaded room with one-way vision to the exterior.

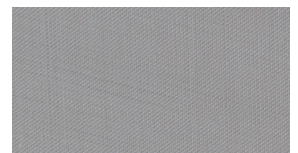
AVAILABLE IN THREE STYLES



Ref# 2150

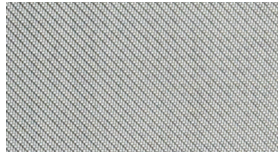


Ref# 2155

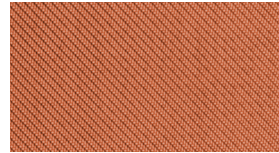


Ref# 2161

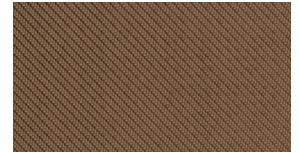
AVAILABLE FINISHES



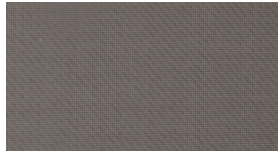
Aluminum



Copper



Brass



Back Side

Mesh Options

» Chromavision is available in 3 colors: Aluminum, Copper, and Brass

Glass Lite Facing Options

» Laminated (5/16", 7/16" and 9/16")

Panel Dimensions

» Units are produced to specified dimensions per project

» Maximum dimensions: 60" X 172"

Functional Characteristics

The use of Chromavision results in a significant reduction in light and heat transmission. Below are measurements of Chromavision's light transmission and derived energy transmission information.

2150	2150 Aluminum	2151 Copper	2152 Brass
g-value (%)	28.7	31.2	33.3
Light transmission Tv (%)	21.7	20.0	19.9

2155	2155ALU	2155COP	2155BRS
g-value (%)	53.9	52.4	54.5
Light transmission Tv (%)	49.9	46.2	48.7

2161	2161ALU	2161COP	2161BRS
g-value (%)	32.8	33.8	35.2
Light transmission Tv (%)	19.7	19	18.6

G-value equates to how much energy from sunlight reaches the interior of a room via the glazing. The higher the g-value, the higher the passive solar gain.

The lower the value, the better the protection provided against strong sunlight. The g-value is derived from two factors: direct sunlight transmission and secondary heat dissipation.

