

Waterfall 2000

Madison 3943

Specifications

Contents

100% post-consumer recycled polyester

Weight

16.0 ± 1.0 oz./lin. yd.

Width

54" min. useable

Treatment

BLOCKaide™

Cleaning Code

Standard Care Label W-S. Clean with water based cleaning agents, foam or pure, water free solvents. Vacuuming or light brushing is recommended to prevent dust and soil buildup.

Performance



Breaking Strength (ASTM D5034)

300 lbf min. warp and 275 lbf min fill

Tear (ASTM D2261)

30 lbf min. warp and fill

Seam Slippage (ASTM D4034)

60 lbf min. warp and 50 lbf min. fill

Pilling resistance (ASTM D3511)

Class 4 min.

Colorfastness to light (AATCC 16 Option 3)

Grade 4 min. at 40 hours

Colorfastness to crocking (AATCC 8)

Grade 4 min. dry & Grade 3 min. wet

Colorfastness to water (AATCC 107)

Class 3 min. for staining
Class 4 min. for color change

Wyzenbeek Abrasion resistance (ASTM D4157)

100,000 double rubs min. cotton duck

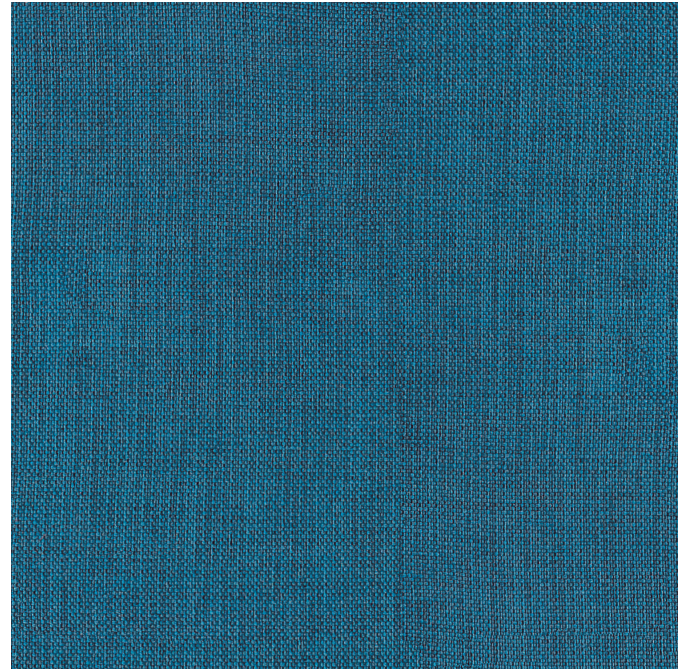
Flammability

CA Tech Bulletin 117 Sec. E
NFPA 260/UFAC Fabric Classification - Class I

Miscellaneous

This is a directional fabric.

Application testing of this product is recommended.



Terratex is a registered trademark of True Textiles, Inc. and designates fabrics that are made from 100% recycled or compostable material using increasingly sustainable manufacturing practices to produce a high quality product that is recyclable at the end of its useful life. (terratex.com)

CO₂ emissions from 100% of the electricity used by the manufacturer to produce this product have been measured and offset in accordance with the CarbonNeutral Protocol.



Guilford of Maine