



American Marazzi Tile, Inc.
Headquarters & Manufacturing Plant

359 Clay Road
Sunnyvale, Texas 75182

Telephone
972.226.0110
Toll Free
800.289.8453
Fax
972.226.5629

www.marazzitile.com
contact@marazzitile.com

STONE COLLECTION is available nationwide.
To locate your nearest Distributor call
American Marazzi Tile Customer Service
or visit www.marazzitile.com

DISTRIBUTED BY:

Color and other aesthetic features shown are as close as the limitation of the printing process will allow. We have tried to make this brochure as comprehensive and factual as possible. We reserve the right, however, to make changes at any time, without notice, in colors, materials, packaging, specifications and availability. Since some information may have been updated since time of printing, please check with American Marazzi Tile Customer Service for details.

Stone Collection

color body porcelain stoneware I
Rectified

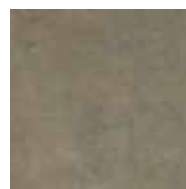
Stone Collection

Stone Green- Stone Ivory



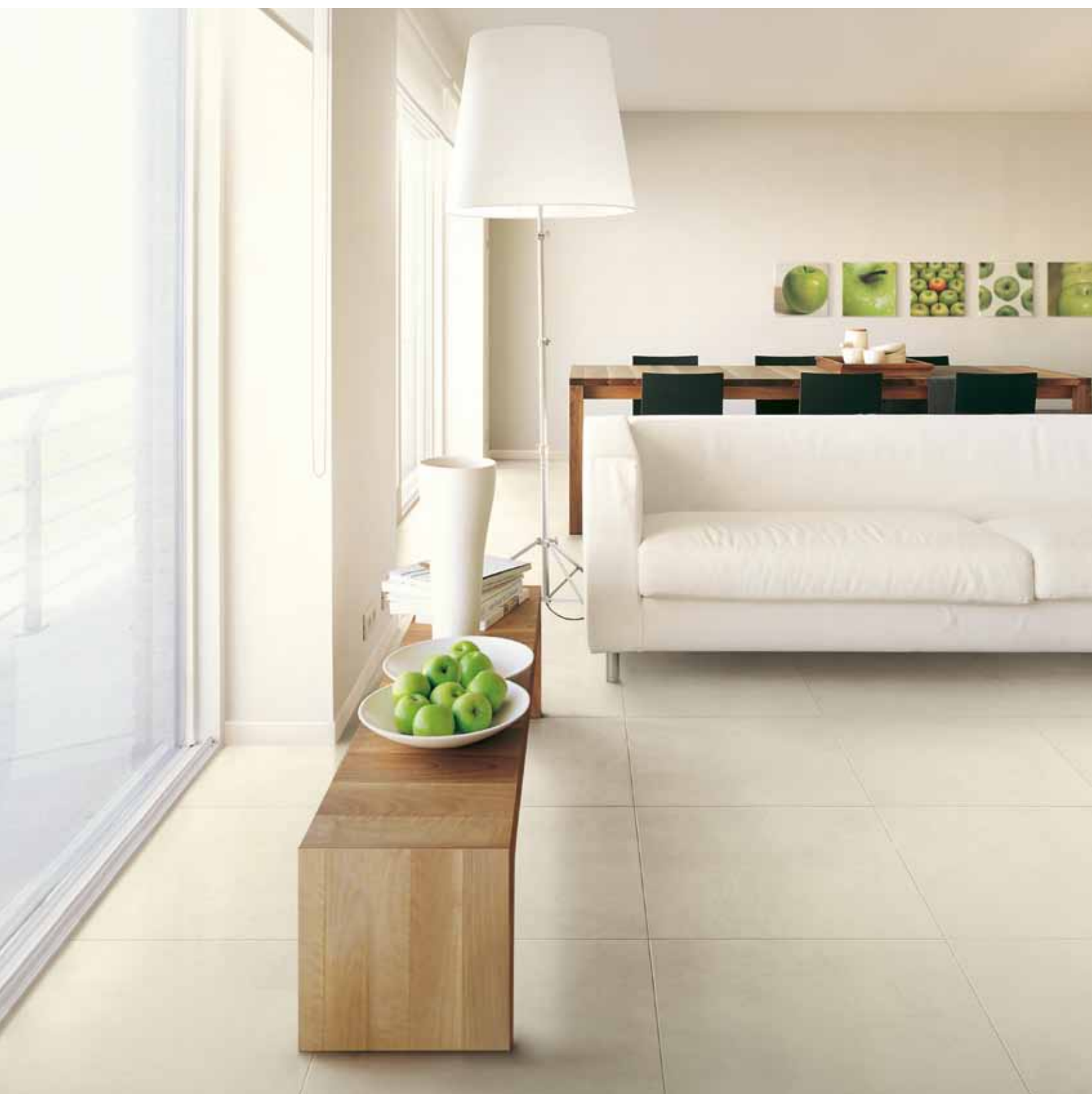
Stone Collection color body glazed porcelain offers so many choices . . . four dramatic, large-format modular sizes in three muted, grayed earthen tones – Stone Anthracite, Stone Green, Stone Ivory – with two mesh-mounted mosaic formats and a striking listelli with wood link.

Floor: Stone Green 18"x18" - Wall: Stone Ivory Mosaic 12"x12" (2"x2" Square)





Floor: Stone Ivory 24"x24"



Floor: Stone Anthracite 24"x24" - 12"x24" - 12"x12"

Stone Collection

Stone Anthracite



A smooth, touchable surface belies the depth of movement and sense of refined texture. Artful transformations from minimalistic to well-accessorized occur easily without professional design assistance simply by mixing and matching these diverse elements to customize residential or commercial areas.

Floor: Stone Ivory 18"x18" Wall: Stone Ivory 12"x24"
Shower: Stone Anthracite 12"x12" - Mosaic 12"x12"(2"x2" Square)





Stone Collection

floor and wall tile - color body porcelain stoneware



M6ZA Stone Ivory
Rectified
24"x48"



M6ZF Stone Ivory
Rectified
12"x48"



MHSD Stone Ivory
Rectified
12"x24"



M6ZD Stone Anthracite
Rectified
24"x48"



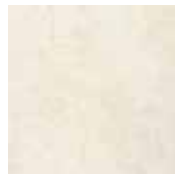
M6ZH Stone Anthracite
Rectified
12"x48"



MHSF Stone Anthracite
Rectified
12"x24"



MHHN Stone Ivory
MHHT Stone Ivory
Rectified
24"x24"



MHSB Stone Ivory
Rectified
18"x18"



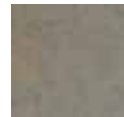
MHSM Stone Ivory
Rectified
12"x12"



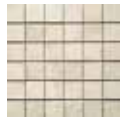
MHHQ Stone Anthracite
MHJM Stone Anthracite
Rectified
24"x24"



MHSK Stone Anthracite
Rectified
18"x18"



MHT2 Stone Anthracite
Rectified
2"x12"



M54U Stone Ivory
Mosaic - Square 2"x2"
12"x12"



M54P Stone Ivory
Mosaic - Brick 1 1/2"x2 1/2"
12"x12"



M54W Stone Anthracite
Mosaic - Square 2"x2"
12"x12"

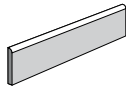


M54R Stone Anthracite
Mosaic - Brick 1 1/2"x2 1/2"
12"x12"

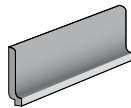


MHT2 Stone Anthracite
Listelli
2"x12"

Trims



UG4K Stone Ivory
Bullnose
3"x12"



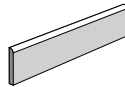
UHCF Stone Ivory
Sanitary Cove Base
6"x12"



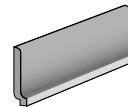
UHCJ Stone Ivory
Sanitary Cove Base In Angle
1"x6"



UHCM Stone Ivory
Sanitary Cove Base Out Angle
1"x6"



UG4H Stone Anthracite
Bullnose
3"x12"



UHCD Stone Anthracite
Sanitary Cove Base
6"x12"



UHCG Stone Anthracite
Sanitary Cove Base In Angle
1"x6"



UHCK Stone Anthracite
Sanitary Cove Base Out Angle
1"x6"

ASTM Test Results

Technical Characteristics	ASTM Test Results	ASTM Test Results	ASTM Test Methods
Water Absorption	≤0.50%	≤0.50%	C373
Frost Resistance	As Reported	Resistant	C1026
Scratch Resistance	MOHS 1-10	6	MOHS Scale
Breaking Strength	≥ 250 lbf.	≥ 850 lbf.	C648
Facial Dimension	-3.0% ≤ Nominal ≤ 2.0%	Within Standard	C499
Thickness	≤ 0.04 in (1.02 mm max)	Within Standard	C499
Wedging (squareness)	+/- 0.25% or +/- 0.8 mm**	Within Standard	C502
Warpage (flatness)	+/- 0.40% or +/- 1.3 mm**	Within Standard	C485
Abrasion Resistance	Class 0 - Class V	Class IV*	C1027
Dry Coefficient of Friction	As Reported	0.60 ≤ C.O.F. < 0.70	C1028
Wet Coefficient of Friction	As Reported	0.60 ≤ C.O.F. < 0.70	C1028
Chemical Resistance	Class A - Class E	Class A	C650
Stain Resistance	Class A - Class E	Class A	C1378

* Abrasion Resistance / Suggested Applications

Class IV: Tile in this class may withstand heavier amounts of traffic with greater amounts of dirt and/or other abrasives present including commercial kitchens and areas with regular traffic from the outside. See Coefficient of Friction and Frost Resistance for installation-specific details.

** Whichever is less



Floor Tile



Wall Tile



Modular Tile



Rectified Tile



Decorative Tile



Trim Available



Suitable for Outdoors



Slight Variation



Frost Resistant



Meets ADA Recommendations



Abrasion Resistance



C.O.F. (Wet)



C.O.F. (Dry)



45% Minimum Pre-Consumer Recycled Content



Certified No VOC



Contributes to
LEED Credits



M6ZE Stone Green
Rectified
24"x48"



M6ZJ Stone Green
Rectified
12"x48"



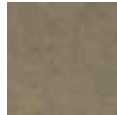
MHSJ Stone Green
Rectified
12"x24"



MHHR Stone Green
MHJN Stone Green
Rectified
24"x24"



MHSL Stone Green
Rectified
18"x18"



MHSQ Stone Green
Rectified
12"x12"



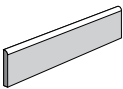
M54X Stone Green
Mosaic - Square 2"x2"
12"x12"



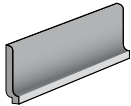
M54T Stone Green
Mosaic - Brick 1½"x2½"
12"x12"



MHT3 Stone Green
Listelli
2"x12"



UG4J Stone Green
Bullnose
3"x12"



UHCE Stone Green
Sanitary Cove Base
6"x12"



UHCH Stone Green
Sanitary Cove Base In Angle
1"x6"



UHCL Stone Green
Sanitary Cove Base Out Angle
1"x6"



	Sizes	Pcs	Sq. Ft.	Weight (lbs.)	Thickness
Modular Tile	12" x 24" R	5	9.69	52	0.413
Modular Tile	12" x 48" R	3	11.63	61	0.413
Modular Tile	12" x 12" R	11	10.66	56	0.413
Modular Tile	18" x 18" R	6	13.08	68	0.413
Modular Tile	24" x 24" R	4	15.50	79	0.413
Floor Tile	24" x 24"	4	15.50	82	0.413
Modular Tile	24" x 48" R	2	15.50	77	0.413
Listelli	2" x 12"	6		7	Compatible
Mosaic-Square 2"x2"	12" x 12"	4		21	Compatible
Mosaic-Brick 1.5"x2.6"	12" x 12"	4		21	Compatible
Sanitary Cove Base **	6" x 12"	12		26	Compatible
Sanitary Cove Base In Angle **	1" x 6"	6		2	Compatible
Sanitary Cove Base Out Angle **	1" x 6"	6		2	Compatible
Bullnose *	3" x 12"	20		26	Compatible

Notes: * Trim is available in all colors and made to complement Modular and Floor Tile.
** Suggested for interior applications only.



	Sizes	Ctn	Sq. Ft.	Weight (lbs.)
Modular Tile	12" x 24" R	40	387.60	2080
Modular Tile	12" x 48" R	20	232.60	1220
Modular Tile	12" x 12" R	40	426.40	2240
Modular Tile	18" x 18" R	26	340.08	1768
Modular Tile	24" x 24" R	30	465.00	2370
Floor Tile	24" x 24"	30	465.00	2460
Modular Tile	24" x 48" R	30	465.00	2310

MARAZZI USA