



GEIGER

MP™ TABLES

FOUR HEIGHTS | SIX SHAPES | THREE SURFACES | GREENGUARD CERTIFIED



COVER

Oblong conference table, 60" x 192" Rift Oak top, Satin Chrome base

ABOVE

Rectangular conference table, 48" x 120" Rift Oak top, Satin Chrome base

Square occasional tables: 36" Clear glass, Rift Oak, White backpainted glass tops; Satin Chrome, Arctic Silver, White bases

"I DESIGNED MP TO BE LIGHT, WITH TOPS THAT APPEAR TO FLOAT. I WANT THE TABLES TO BE AT HOME AMONG MID-CENTURY CLASSIC DESIGN YET PROVIDE ALL THE CONVENIENCES OF MODERN TABLES. MP'S ELEGANT PROPORTIONS AND MATERIALS MAKE THE TABLE A FITTING COMPLEMENT TO INTERIORS AS THEY EXIST TODAY—AND MP'S VERSATILITY IN HEIGHTS AND SIZES ANTICIPATES THE CHANGING FLOOR PLANS OF TOMORROW."

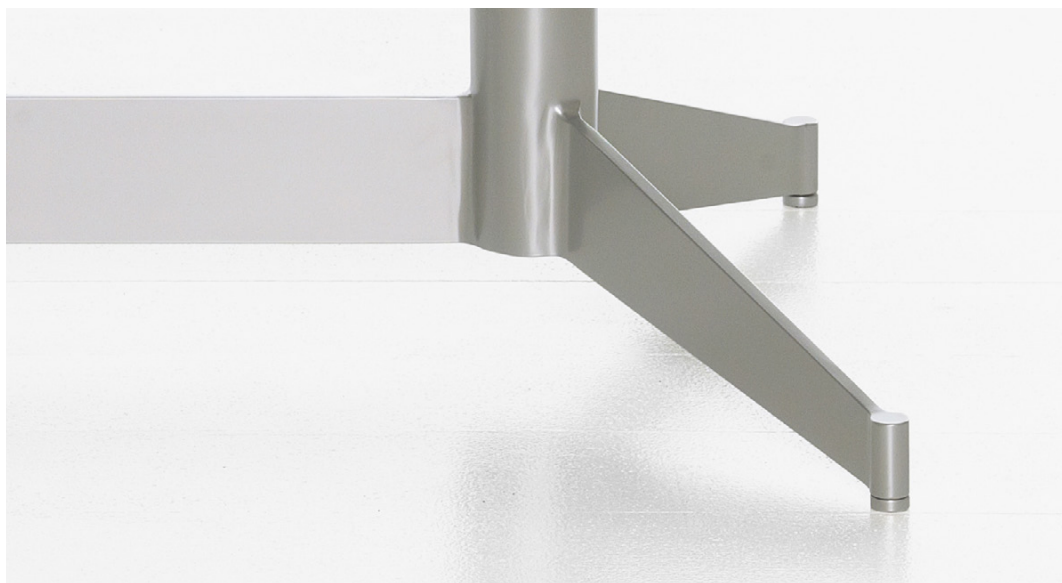
AMIR PAKNYA

The MP Table is designed on a crisply proportioned platform of metal columns melded with flat-blade metal feet. For larger tables, MP provides an elegant alternative to segmented bases, with a blended frame that softens transitions from the stretcher to the table's columns. The effect is industrial, luxurious and light, in a table that scales gracefully without sacrificing its lightness. MP Tables support the entire continuum of work/life scenarios, from private offices and meeting rooms, to settings where community and individual work overlap, such as in workplace living rooms, lounges and cafés.

MP TABLES BY AMIR PAKNYA

Taking a cue from his father, whose initials “MP” provide the table’s name, Amir Paknya developed an affinity for calligraphy at an early age. “I’ve always loved the feel of ink gliding over the tooth of a high-quality paper,” he says. “I see beauty in simple curves and different line weights.” Paknya earned a Bachelor of Fine Arts degree in Industrial Design from Pratt Institute. He has spent the ensuing 30 years in the furniture industry, earning a reputation as a “fine artist” in the field of wood and metal furniture. He is currently Director of Special Projects for Geiger International.





MP TABLES | PART OF AN ENDURING LEGACY

In 1964, master cabinet-maker John Geiger parlayed a passion for woodworking into a handcrafted furniture business. His love of and respect for the materials he used, combined with his appetite for perfection, set new international standards in furniture manufacturing.

Today, Geiger's reputation for design and craftsmanship continues to enhance business interiors with an elegant and intelligent portfolio of products for the modern workplace. From executive offices to collaborative environments for knowledge workers, Geiger delivers excellent return on investment through timeless design, superior materials, integrated technology and an unwavering commitment to quality.





From left: 16.5" Occasional, 26" Lounge, 29" Desk, 42" Café

MP TABLES | A COMPLETE VOCABULARY OF SIZES, SHAPES AND MATERIALS

MP Tables are available from 24" x 24" to 60" x 240" in Round, Square, Rectangular, Oblong, Racetrack and Half Boat shapes. Top options include wood, clear glass and backpainted glass. Bases can be specified from among eight metal finishes, including Satin Chrome, Arctic Silver and White.





ABOVE

Oblong desk table, 36" x 72" Rift Oak top, Arctic Silver base

OPPOSITE

Rectangular desk tables: 36" x 72" Rift Oak, Clear glass,
White backpainted glass tops; Satin Chrome bases



MP CONFERENCE TABLES



Conference tables with wood tops of up to 20 feet in width, with optional grommets or power modules, or glass-top tables of up to seven feet in width



MP CONFERENCE TABLES



Oblong conference table, 60" x 192" Rift Oak top, Satin Chrome base



MP CONFERENCE TABLES



Rectangular conference table, 60" x 240" Rift Oak top, Satin Chrome base

MP TABLES | POWER AND DATA ACCESS





ABOVE

Power Centers host power, data, video, audio and USB services, featuring six grounded 15-amp receptacles and two user-defined voice/data/accessory bays. The flip lid pivots bi-directionally for access from either side of the table.

OPPOSITE

- 1** Cables run from module to module via under-table channels, with hinged doors that provide easy access to cables while eliminating clutter
- 2** Under-table outlet powers projectors, vacuums, USB hubs and more
- 3** Cables drop through the legs and exit at the bottom for floor access

MP TABLES

DESIGNER

Amir Paknya

PRODUCT VOCABULARY

OCCASIONAL

16.5" height, 24" to 48"

Round, Square

LOUNGE

26" height, 24" x 24" to 42" x 84"

Round, Square, Rectangular, Oblong

DESK

29" height, 24" x 24" to 60" x 240"

Round, Square, Rectangular, Oblong, Racetrack, Half Boat

CAFÉ

42" height, 24" to 48"

Round, Square

MATERIALS

TOP

1 1/4" or 1 1/2" wood tops, 1/2" glass tops

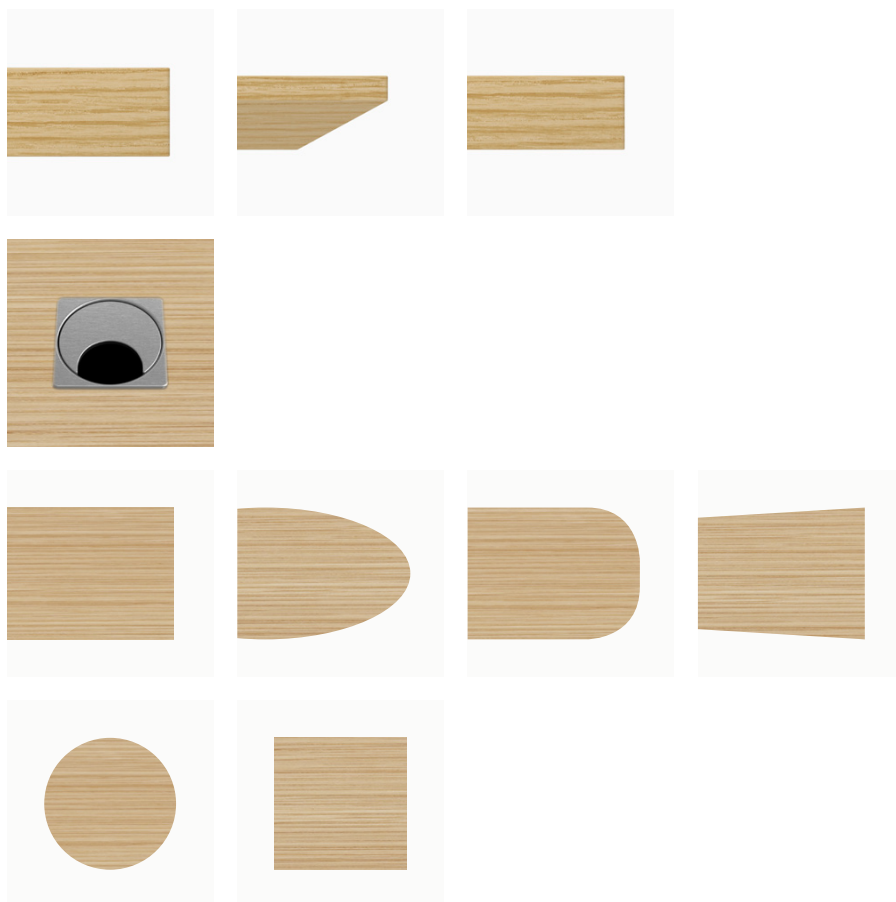
BASE

Arctic Silver, Bronze, Black, Chrome, Metallic Bronze, Metallic Silver,
Satin Chrome, White

ENVIRONMENT

Wood MP tables are crafted using FSC-certified, recycled-content substrates and virtually VOC-free water-based stains, adhesives and finishes. MP tables are GREENGUARD certified.

MP TABLES | OPTIONS



WOOD EDGES

Tablet Square, Levels Incline, Levels Eased plus Geiger's standard solid edge details

GROMMET

Small

SHAPES

Rectangular, Oblong, Racetrack, Half Boat, Round, Square



GEIGER INTERNATIONAL
800.456.6452
WWW.GEIGERINTL.COM

Serial #12T143