

## tile specifications

style name	melt tile
style number	5T048
construction	multi-level pattern loop
fiber	eco solution q® nylon
dye method	87% solution dyed/13% yarn dyed

	english	metric
pattern repeat	none	
tufted weight	18.0	610.30 g/m <sup>2</sup>
gauge	1/12	47.24 per 10 cm
stitches per inch	9.0	35.43 per 10 cm
finished pile thickness	0.111	2.82 mm
total thickness	0.248	6.30 mm
average density	5838	10.87 kilotex
product size	18" x 36"	45.72 cm x 91.44 cm
primary backing	synthetic	
secondary backing	ecoworx® tile	
protective treatments	ssp® shaw soil protection	
gsa approved product	yes	



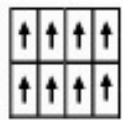
## testing

radiant panel	Class I
nbs smoke	less than 450
electrostatic propensity	less than 3.5 kv

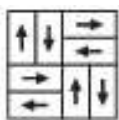
## warranties

lifetime commercial limited

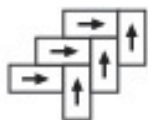
## installation method



monolithic



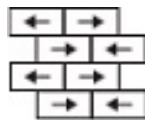
basketweave



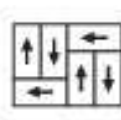
herringbone



boxed in



brick



half basketweave

## coordinating products

ignite tile, unleash tile, still tile

## environmental certification

nsf140 platinum

cradle to cradle silver certified





Specifications are subject to nominal manufacturing variances.  
Material supply and/or manufacturing processes may necessitate changes without notice.

[shawcontractgroup.com](http://shawcontractgroup.com) | 1 800.257.7429

## eco impacts

### end of life

#### recyclability

100% recyclable

#### shaw closed looped recycling

100.0%

#### environmental guarantee

free pick up &amp; recycling

To recycle call 800.509.SHAW

## materials

### ingredients

face fiber

nylon 6

dye method

87% solution dyed/13% yarn dyed

backing

polyolefin composite

surface treatments

non c8 flourocarbon chemistry

does not contain PVC, phthalates, or PBD/PBDE

### recycled content

total recycled content (by weight)

44.4 %

pre-consumer

33.0 %

post-consumer

11.4 %

bio-based/rapidly renewable content (by weight)

0.0 %

packaging

100% recyclable

country of origin (manufacturer)

USA

Meets or exceeds all local and national regulations in country of manufacture.

Manufactured in an ISO9001 &amp; ISO14001 certified facility or equivalent.

Recycled content is calculated using system allocation, mass balance, and direct insertion.

The actual recycled content in this product will likely vary. For more information email

info@shawgreenedge.com.

## third party certifications

MBDC cradle to cradle

silver certified

NSF 140

platinum certified

CRI green label plus

certified glp9968

USGBC LEED

contributes

Building Research Establishment

certified

Good Environmental Choice Australia

certified

Singapore green label

certified 039-003

## social responsibility

Shaw and our people provide financial support, volunteer service and leadership for charitable and civic organizations in the communities where we work and live. Additionally, we strive to adhere to all applicable laws regarding labor, discrimination and harassment, wages and benefits, health and safety, diversity and equal opportunity.

