

## The KnollTextiles® Glass Collection

S | Skyline Design

### Designer

Known for combining clean, clear color with modern, elegant patterns and textures in her textile designs, Dorothy Cosonas is influenced by her passion for fine art and international fashion. The Creative Director of both KnollTextiles and Knoll Luxe, Dorothy is the recipient of numerous awards. Her work is included in the permanent collection at the Cooper Hewitt National Design Museum.



### Technique

Option A: Eco-etch®, one side  
Option F: AST™ I/Etch, one side

### Glass

Clear or low-iron tempered safety glass  
PPG Starphire® glass is recommended for Option F

### Sizes

Standard sizes up to 72" x 144"

### Thickness

1/4", 3/8", 1/2", 3/4"

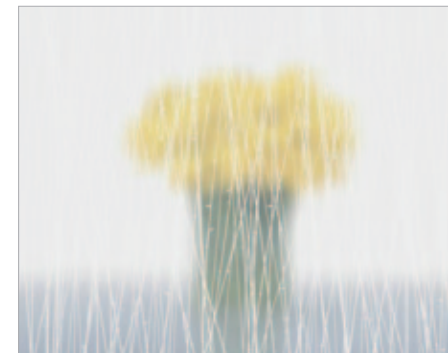
### Customization

Available



## The KnollTextiles Glass Collection

Designed by Dorothy Cosonas and KnollTextiles. An iconic collection of seven patterns that reimagine the nonchalant luxury of classic textiles. Linear, undulating, textural, playful, and organic designs translate textile weaves onto glass with a range of scales and opacities. Historic yet timeless, these eco-friendly patterns are well suited for corporate and healthcare environments. Each is offered in two glass techniques or create your own custom look. Available on ICE® for DIRT™ walls.

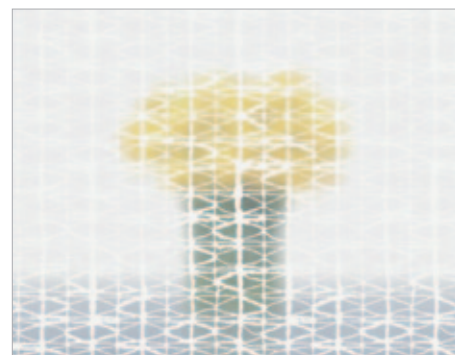


Divine™

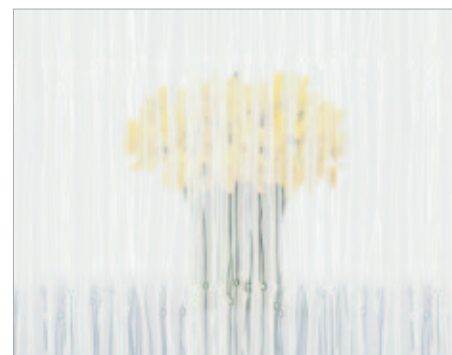


Enchantment™

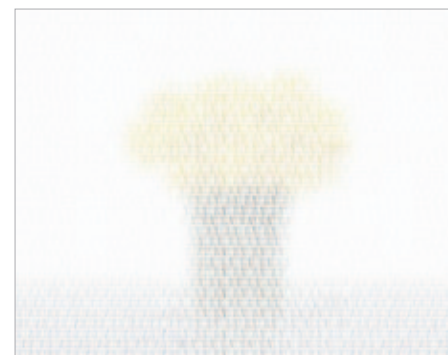
These two patterns designed by Dorothy Cosonas. All patterns shown in AST I/Etch



Cyclone™



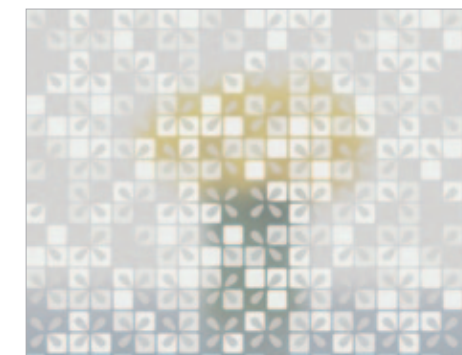
Fibra™



Bliss™



Shortwave™



Chronicle™

Cyclone and Fibra are archival.