

5+™ Collection

S
D Skyline Design

Designer

Michael Graves, FAIA, has been in the forefront of architecture and design since he founded his practice in 1964. His two firms, Michael Graves & Associates, which provides architecture and interior design services, and Michael Graves Design Group, which specializes in product design and graphic design, provide clients around the globe with innovative design solutions that are functional, sustainable, sensitive, and beautiful.



Technique

Option A: Eco-etch®, one side

Option SE: Eco-etch, side one

Obscure etch, side two

Glass

Clear tempered safety glass

Sizes

Standard sizes up to 72" x 144"

Thickness

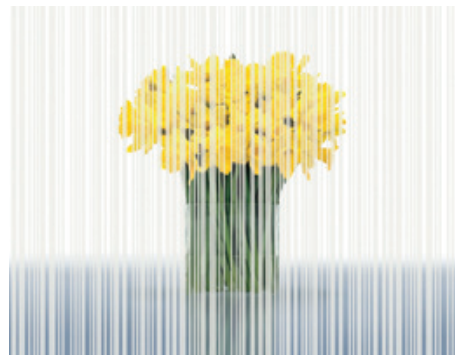
1/4", 3/8", 1/2", 3/4"

Customization

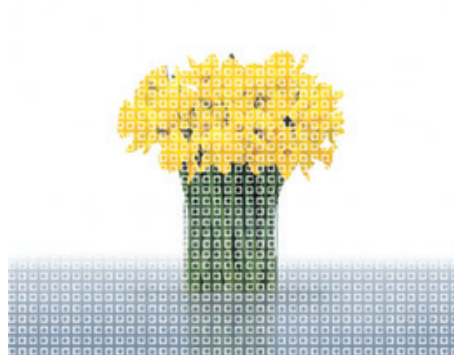
Available

5+ Collection

World-renowned architect and product designer Michael Graves portrays modern abstractions of familiar materials and places in the architecturally inspired 5+ Collection. Reminiscent of the stones and bricks from walkways and piazzas, the collection is an inspired balance of form and function that features transparent and diffused options to accommodate a range of aesthetics and privacy concerns. Available on ICE® for DIRT walls. Contributes to the Public Architecture 1% program. Each time you spec a product from this collection, 1% of the sale helps designers just like you improve communities around the world.



Avenue™



Circle in the Square™



Herringbone™



Running Bond™



Swirl™

Shown: Option A,
one-sided.
Option SE is two-sided
for enhanced opacity.