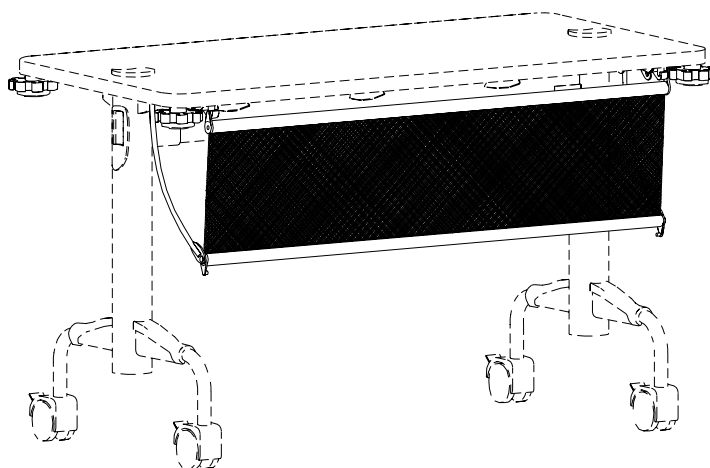




BRETTFORD™

**HTM
HERE®
MODESTY PANEL-
CONNECTING TABLE**

Assembly Instructions



Parts List

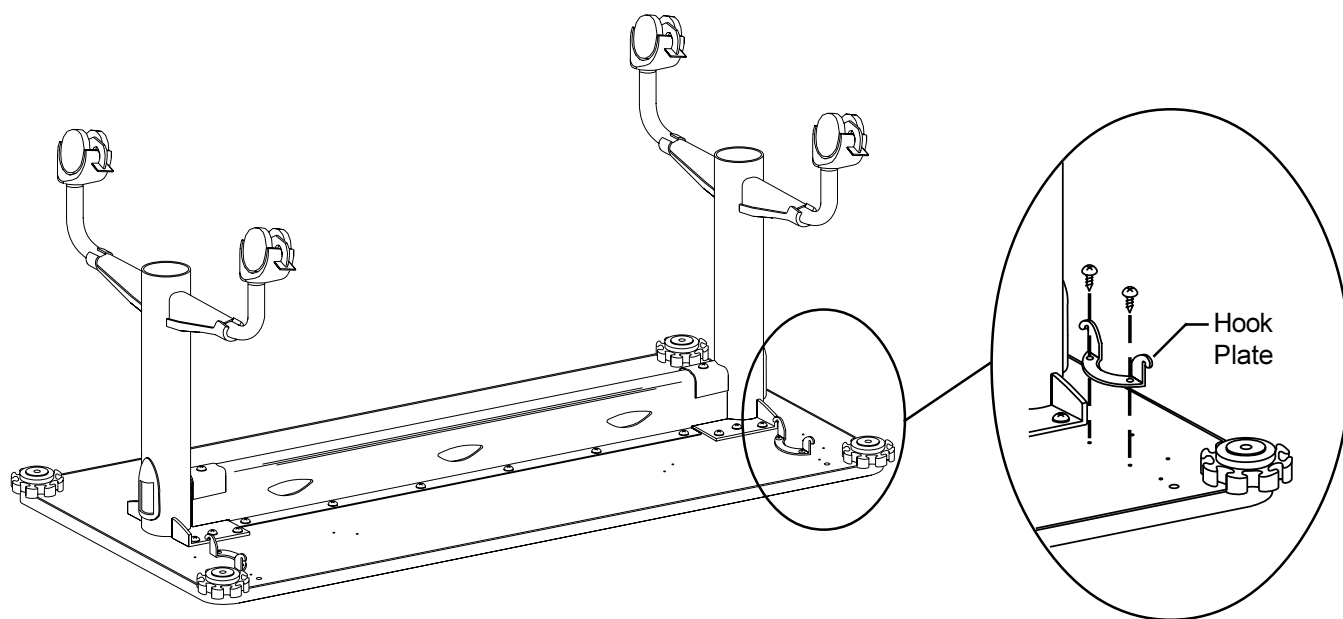
Qty.	Part No.	Description
2	010-3219	Plate, Hook
2	010-3220	Plate, Hinge
1	022-1996	Arm, Swing-LH
1	022-1997	Arm, Swing-RH
2	012-0674	Hook, Modesty Panel
2	012-0673	Clip, Lock-Swing Arm
1		Modesty Panel Assembly (48)
		Modesty Panel Assembly (60)
		Modesty Panel Assembly (72)

Hardware List

Qty.	Ref.	Part No.	Description
8	AA	030-0671	#12 x 3/4" Type 'AB' Phillips Screw
4	BB	030-0383	#10 x 1/2" Type 'AB' Combo Screw
2	CC	030-0255	#10 x 5/8" Type 'AB' Phillips Screw

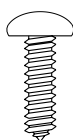
Tools Required

Phillips Screw Driver

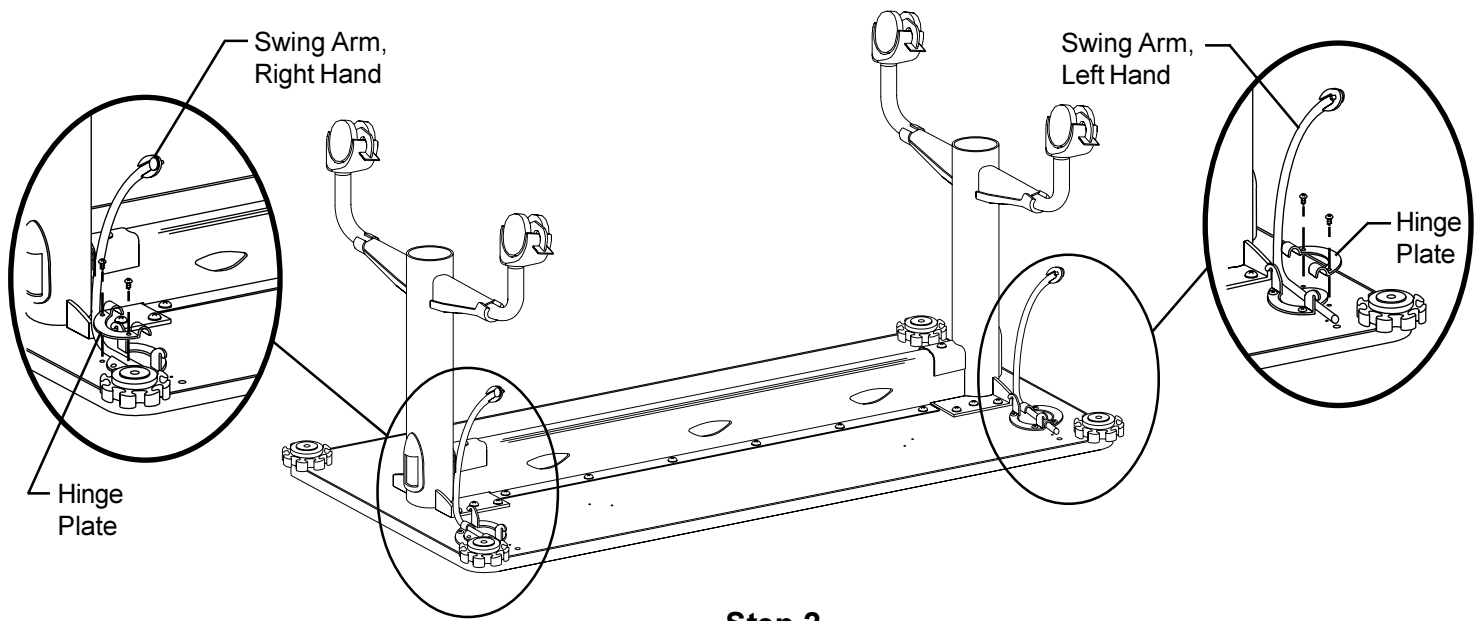


Step 1

Carefully turn your table over onto a clean carpeted surface (or cardboard) with the mounting holes facing front. Attach (2) hook plates with #12 x 3/4" screws (AA) as shown.

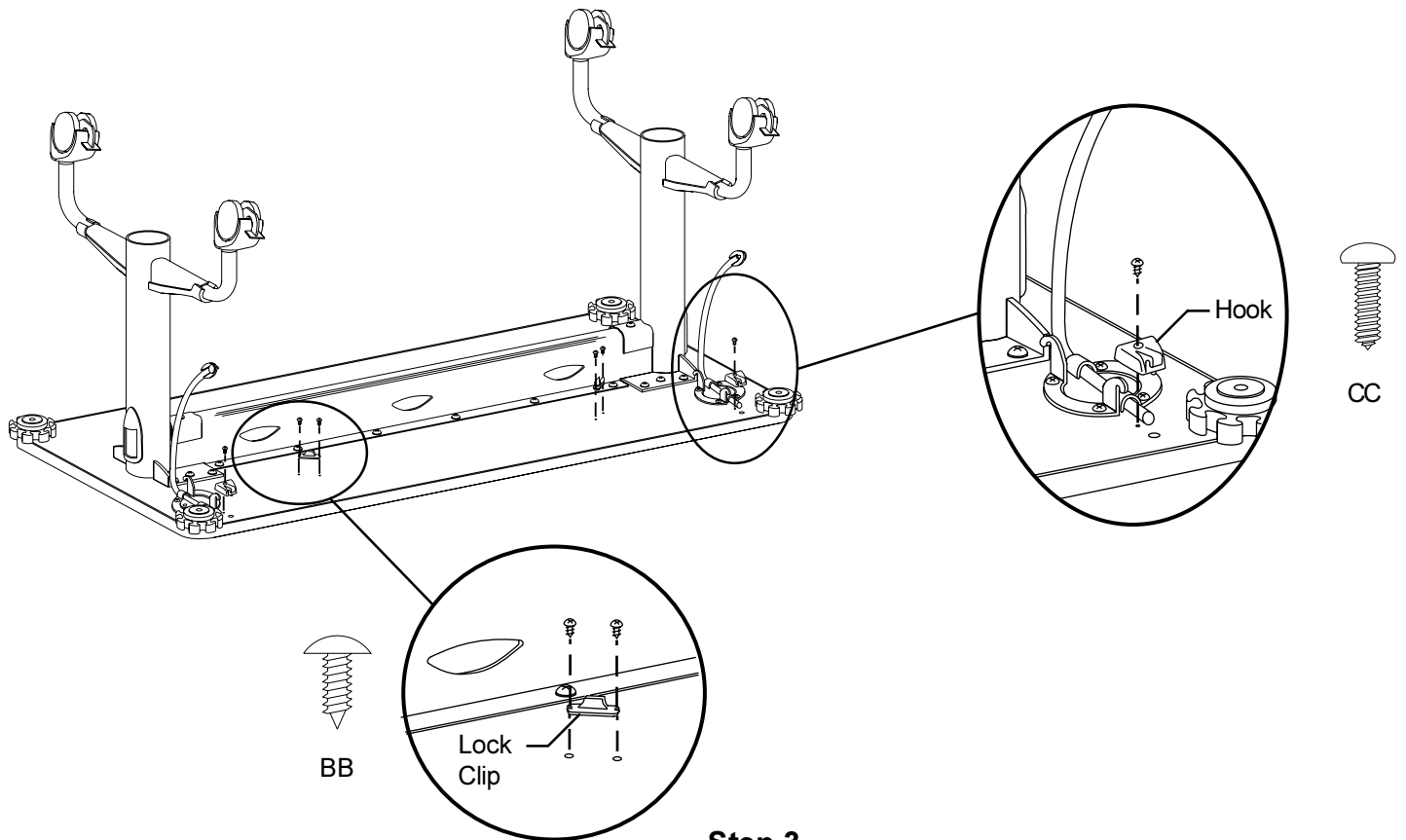


AA



Step 2

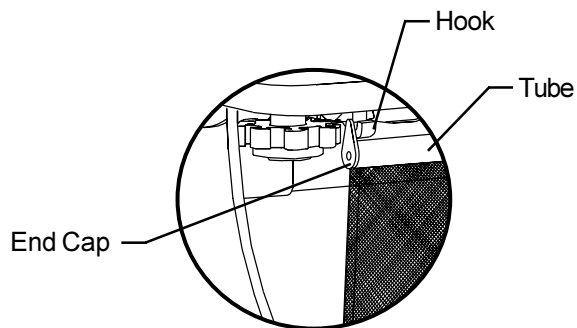
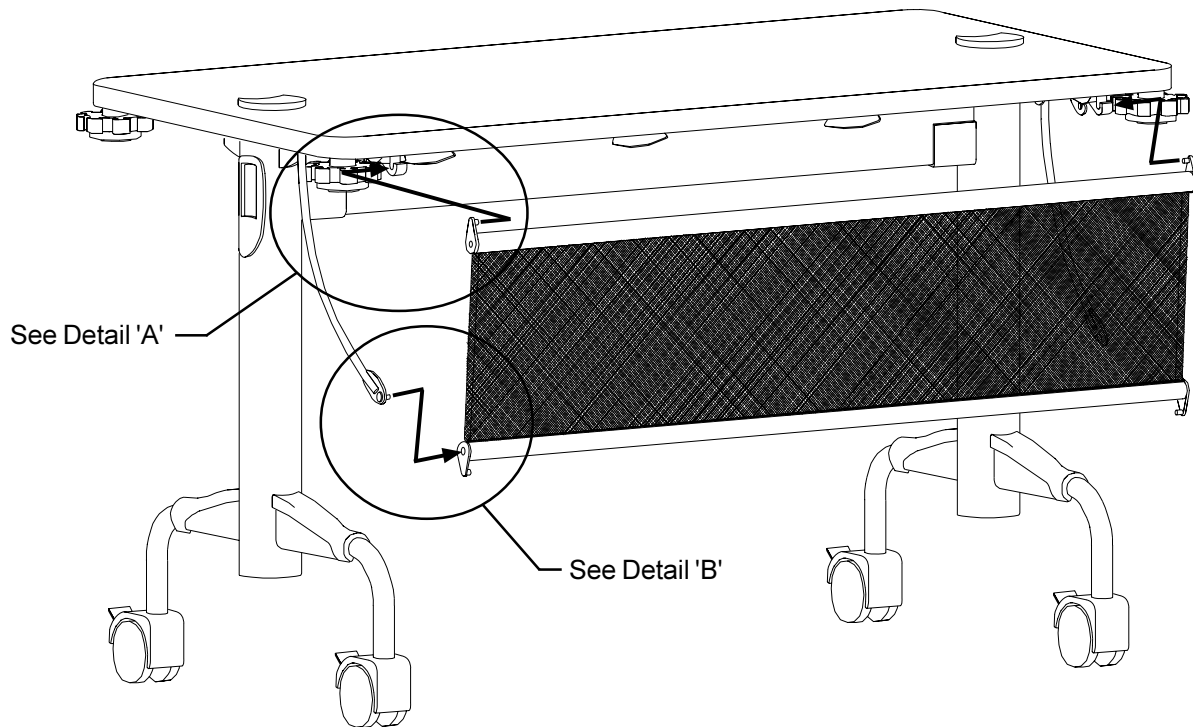
Attach both swing arms and hinge plates using #12 x 3/4" screws (AA) as shown.



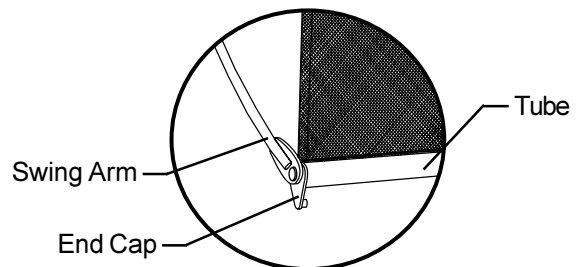
Step 3

Attach (2) plastic lock clips using #10 x 1/2" screws (BB). Attach the (2) plastic hooks using #10 x 5/8" screws (CC).

The table is now ready to be turned over for Modesty Panel installation.



Detail A
(shown assembled)



Detail B
(shown assembled)

Step 4

To assemble the modesty panel to the table, first cradle the pins of the end caps onto the table hooks. The modesty panel should hang freely. Then insert the swing arm pins into the mounting hole of the end caps.

Bretford
11000 Seymour Avenue
Franklin Park, IL 60131
TEL: 847.678.2545
800.521.9614
FAX: 847.678.0852
800.343.1779

Bretford Ltd.
Technology House
2 Etongate, 110 Windsor Road
Slough, Berkshire SL1 2JA England
TEL: 01753 53 99 55
FAX: 01753 53 94 78

www.bretford.com

Part#031-3266
Rev.03.23.04 CH