

ARDEX Concrete Management Systems™

ACMS – Process Innovation – Rough Screed

In new construction applications, ARDEX Concrete Management Systems™ save time and labor costs by eliminating the traditional steel trowel step in the finishing process. Using the Rough Screed System, the contractor will place the concrete, consolidate, strike off, bull float/re-straighten and allow the bleed water to dissipate. Following a wet cover cure of at least three to seven days, brush blast to an ICRI Concrete Surface Profile of 3 (CSP 3). A layer of ARDEX self-leveling underlayment is installed either immediately after deflection or during interior build out.

In some cases, the system can be installed first using ARDEX MC™ RAPID One-Coat Moisture Control System. ARDEX MC RAPID, in conjunction with an ARDEX Self-Leveling Underlayment, allows almost immediate installation of finished flooring while mitigating any future risks resulting from moisture emissions from the slab.

The resulting finish delivers a concrete substrate capable of meeting the most demanding flatness and levelness tolerances for both the flooring and other interior trades while eliminating unplanned leveling and delays.

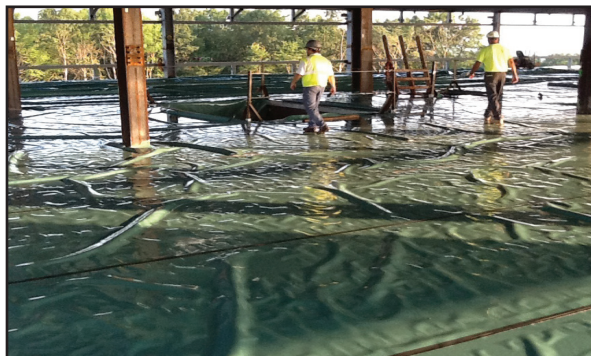
FOR THE OWNER – ACMS ensures your floors will be as level as needed for your application, minimizes schedule delays for the installation of flooring and eliminates disruptions of service to reinstall failed floor coverings due to flatness or moisture issues.

FOR THE SPECIFIER – ACMS removes floor covering performance concerns due to deflection, floor levelness and moisture issues – all from one global manufacturer with decades of industry success – providing the ultimate peace of mind.

FOR THE GENERAL CONTRACTOR – ACMS ensures floors will be as level as needed for the owner's application, minimizes schedule delays for the installation of flooring and removes floor levelness and moisture concerns from the equation.

Innovative Products for Innovative Systems

ARDEX High-Capacity Self-Leveling Underlayments are designed for the ARDEX POWERFLO™ High-Capacity Pump Trailer. These blends of Portland and other hydraulic cements provide the performance characteristics expected from an ARDEX product and handle the challenge of delivery through high-speed, long distance requirements. ARDEX HC 100™ and HC 100R™ provide a durable, flat, smooth floor surface with minimum labor.



For more information on ARDEX Concrete Management Systems™ and the complete line of ARDEX products please contact the ARDEX Technical Service Department at 888-512-7339 or visit www.ardexamericas.com.

AF 390 (12/13)

ARDEX Concrete Management Systems™
Process Innovation – Rough Screed



AMERICAS

888-512-7339
www.ardexamericas.com