

FLOW and FLOW XT Conference Table Installation Instructions

For installation assistance, call the following numbers:

Between 8:00am and 5:00pm (Eastern time): 1-800-NUCRAFT (1-800-682-7238)

Between 5:00pm and 8:00pm (Eastern time): 1-888-886-2028

NUCRAFT

Tools Required and initial notes

Tools Required For Assembly

- 2 People
- Phillips Head Screwdriver
- Drill with #2 and #3 Phillips bit
- 1/4" Allen Wrench
- 1/8" Allen Wrench
- 1/16" Allen Wrench
- 5/32" Drill Bit
- Level
- Draw Tight Fastener Tool (Included)

Initial Notes

- Pictures in instructions may not represent the exact table being installed
- Read all instructions thoroughly prior to beginning the installation
- Tables 120" and less will be shipped with the Beams and Power Island attached to the bases so Step 1 can be skipped.

Hardware included



BOLT, 3/8" UNC x 5/8" L - HW2248



BOLT, 5/16-18 X 5/8 Flt Socket head cap (Post Leg Base ONLY)



SCREW 10-12 X 1-1/4" PHIL

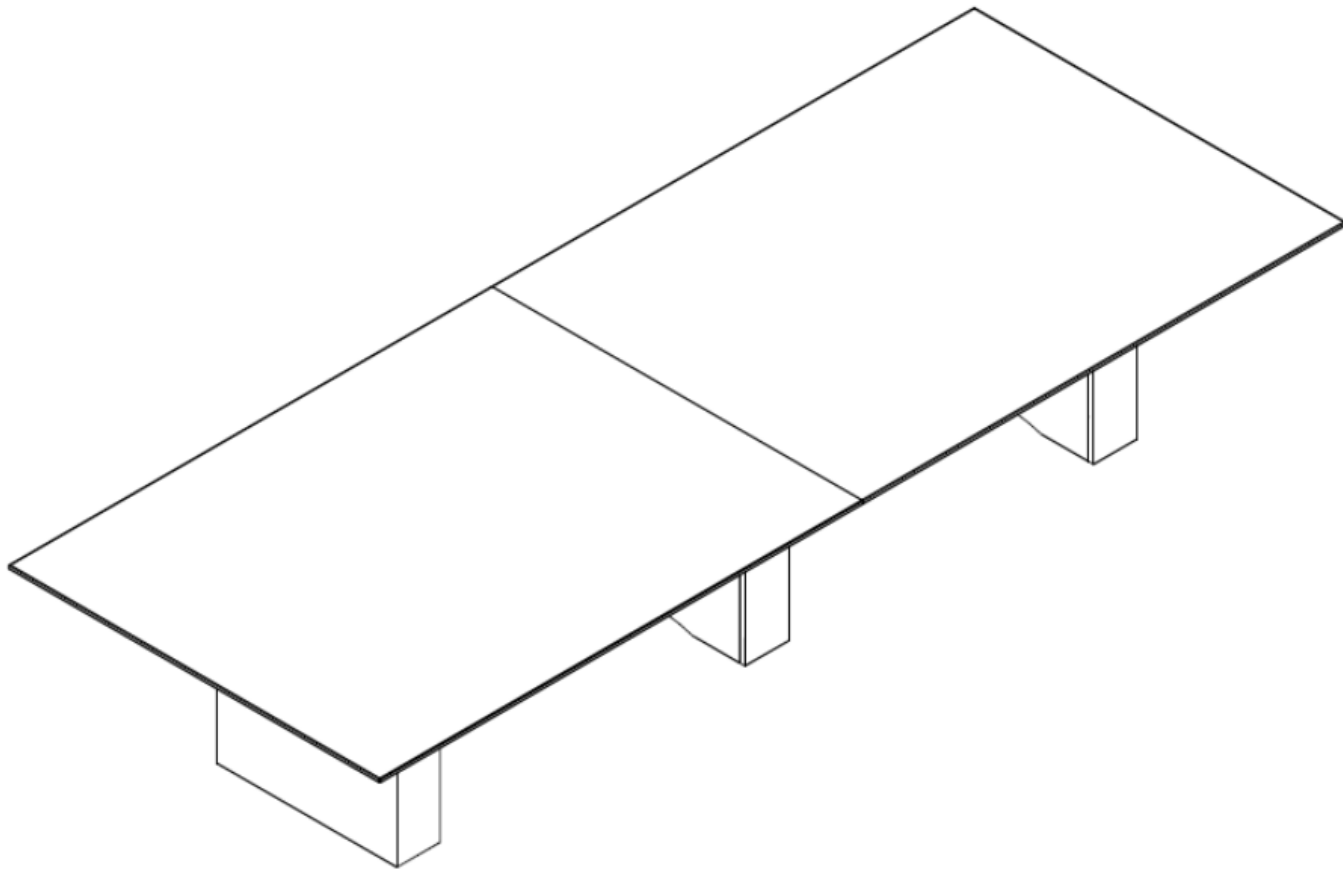


SCREW, #12 X 1" PAN-PHIL



Draw-Tight Hardware

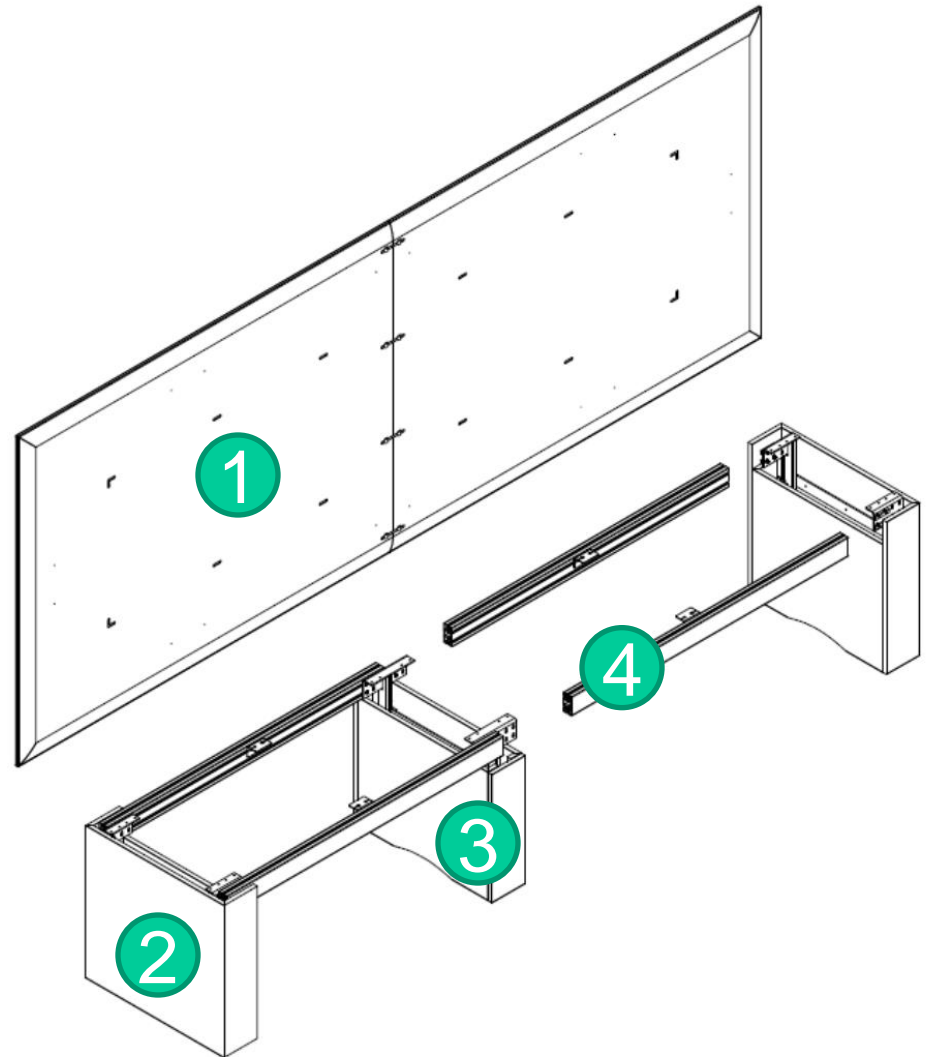
FLOW NT Table



FLOW NT Table

Flow Component Description

- 1. Work Surface
- 2. End Base
- 3. Center Base
- 4. Main Beam



Installation Step 1 - For tables over 120" (if your table is 120" or less skip to step 3)

- Loosen the clamp bars from the base - DO NOT remove.
- Locate the labels and match the beams to the correct placement on the bases
- Attach Main Beam to End Base utilizing the clamp bars and sliding them into the main beam. Assure Beam is tight to the base panel and 1/8" top of the panel
- Tighten Cap Screws to secure the beam to the base.
- Attach Main Beam to Center Base. Assure Beams are tight and flush at the joint. If there is not a center base skip to next step
- Tighten the cap screws to secure the beam to the base.



Installation Step 2

- Using a level on the main beam assure that the base is sitting level.
- Adjust the glides as necessary to assure that the base is level before proceeding.



Installation Step 3

- Align the top with the corners of the bases utilizing the “L” shaped notches on the underside of the table.



- With multiple piece tops join the two halves together utilizing the supplied draw tight hardware.

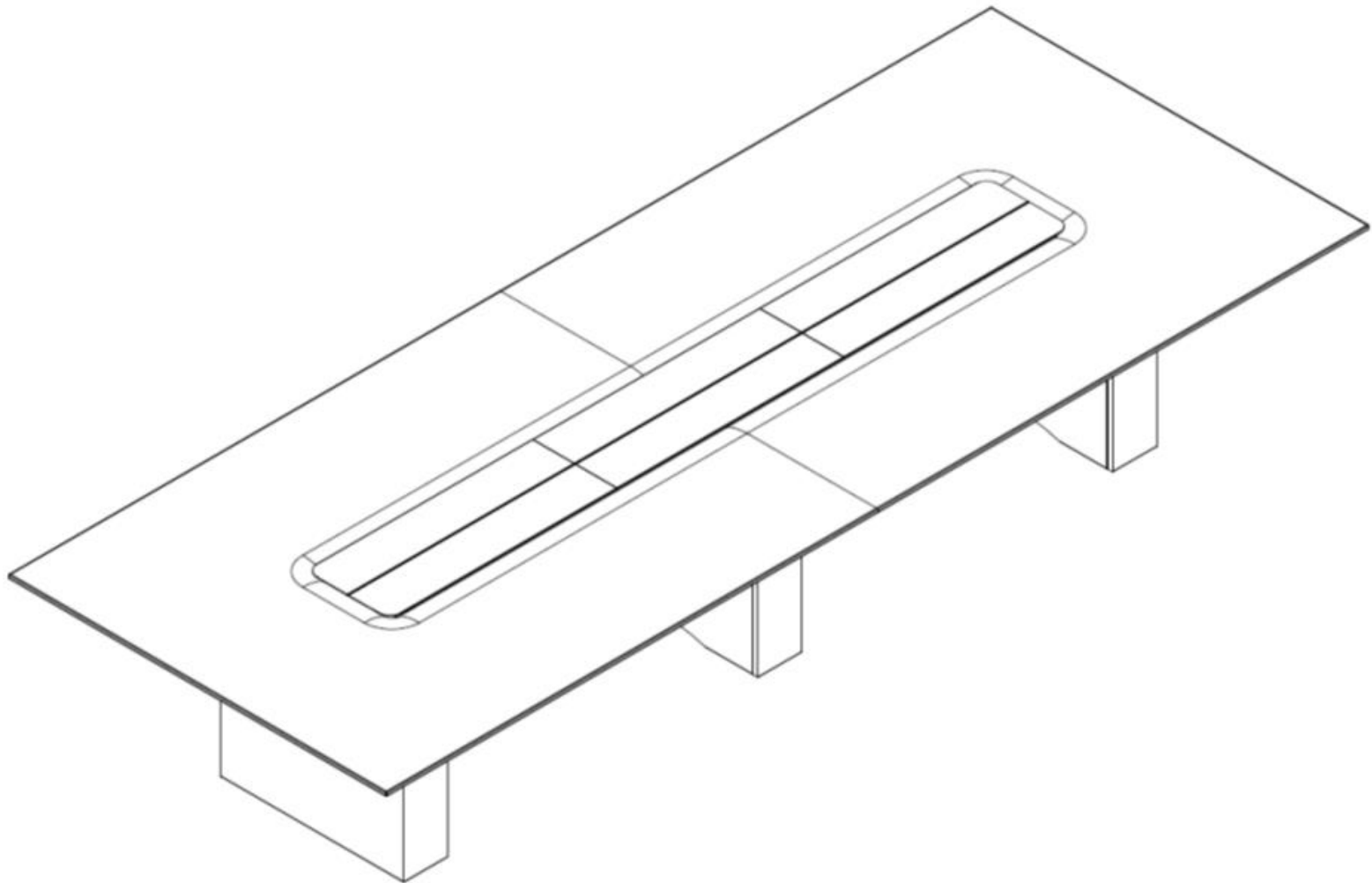


Installation Step 3 -Cont.

- Utilizing the 1" #12 screws provided with the hardware fasten the table top to the base using the brackets that are attached to the base. - Utilize all holes that are intended to attach the base to the top.



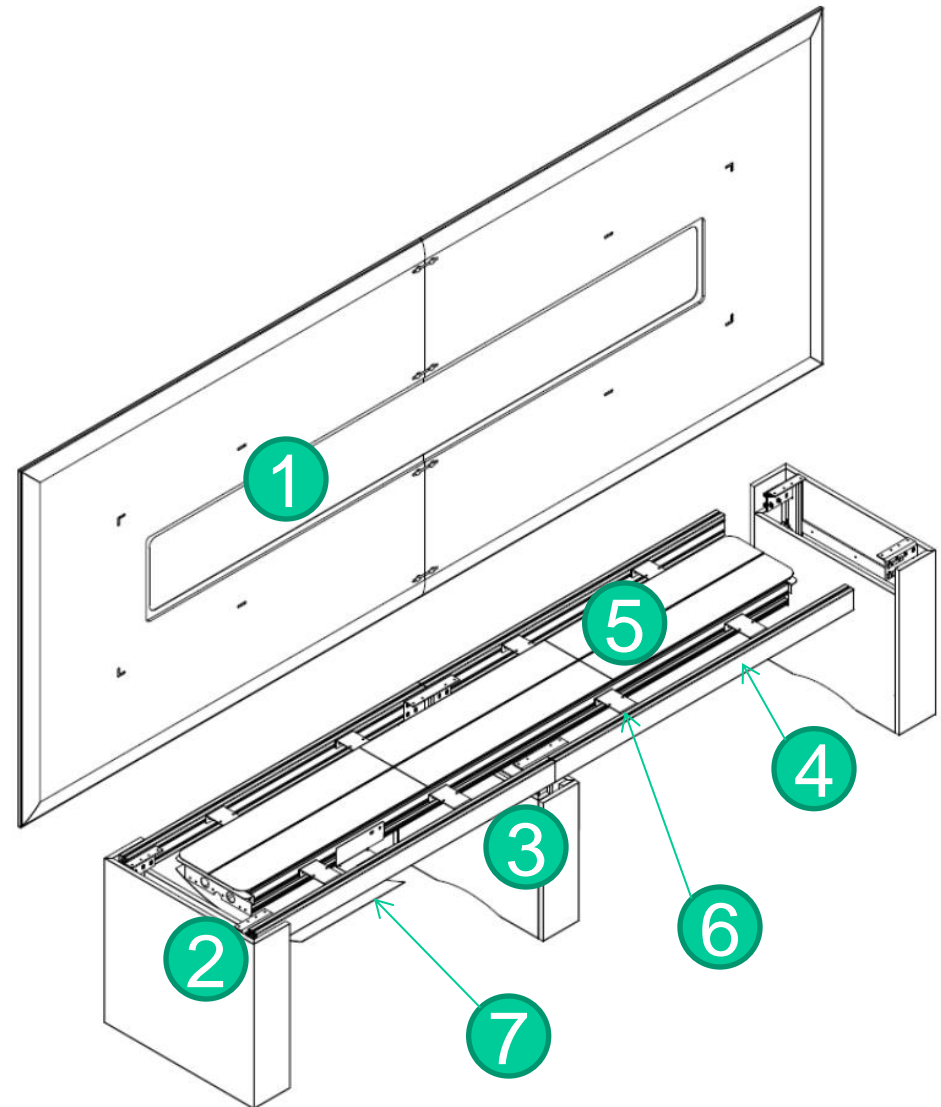
FLOW XT Table



FLOW XT Table Exploded

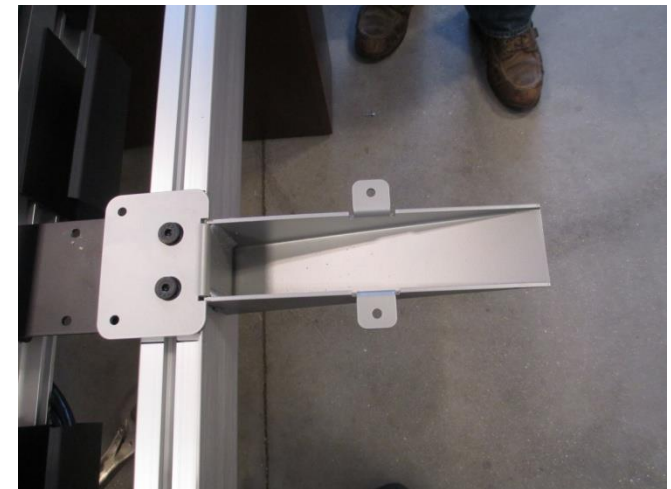
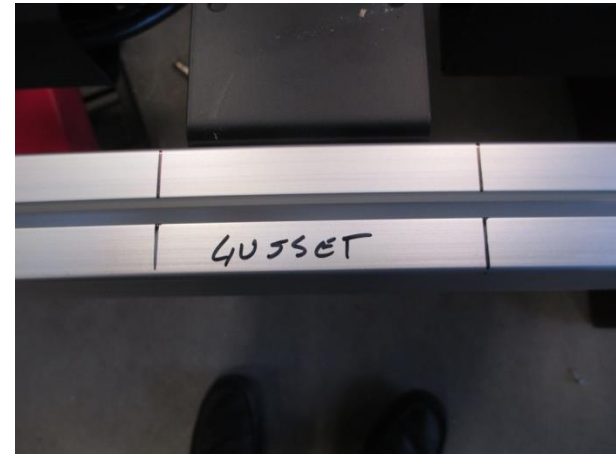
Flow XT Component Description

1. Work Surface
2. End Base
3. Center Base
4. Main Beam
5. Power-Island
6. Power-Island Mounting Bracket
7. Beam Shroud



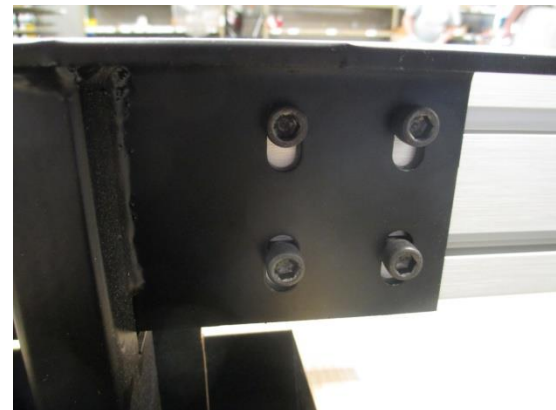
Installation Prep - For tops with more than 2 pieces

- If your table does not have a top with more than 2 pieces please skip to step 1.
- If your table has more than a 2 piece top then Gussets will be included to support the table. These will be marked on the main beams for location
- Slide the clamp bar attached to the gussets on to the main beam BEFORE attaching the beam to the bases.
- Tighten the 5/16 - 18 Hexbolt.



Installation Step 1 - For tables over 120" (if your table is 120" or less skip to step 6)

- Loosen the clamp bars from the base - DO NOT remove.
- Locate the labels and match the beams to the correct placement on the bases
- Attach Main Beam to End Base utilizing the clamp bars and sliding them into the main beam. Assure Beam is tight to the base panel and 1/8" top of the panel
- Tighten Cap Screws to secure the beam to the base.
- Attach Main Beam to Center Base. Assure Beams are tight and flush at the joint. If there is not a center base skip to next step
- Tighten the cap screws to secure the beam to the base.



Installation Step 2

- Using a level on the main beam assure that the base is sitting level both ways.
- Adjust the glides as necessary to assure that the base is level before proceeding.



Installation Step 3 -

- Loosen the Cap Screws on the bracket that attaches the Power Island to the Main Beam AT THE MAIN BEAM so that they can move freely.
- If your Power Island is shipped attached to the main beams then skip to step 4.
- If your power island is shipped separate from the main beams then it needs to be inserted between the beams and attached per the photo to the right using bolt 3/8" X 5/8" UNC

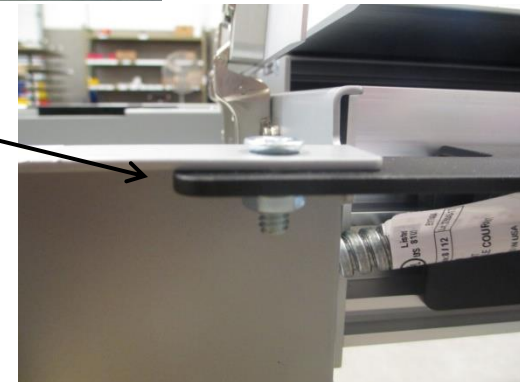


Connect At
the Power
Island



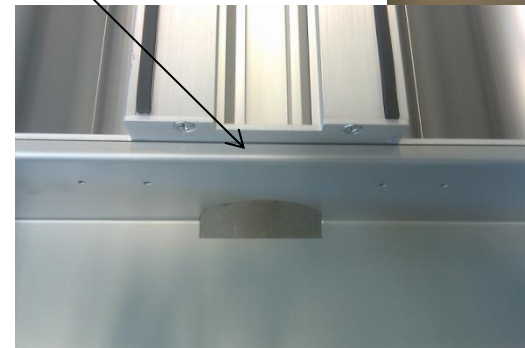
Installation Step 4 - Storage Well Install (If Included)

- Place the storage well in the appropriate location in the power island.
- Using $\frac{1}{4}$ -20 x3/4 PHIL FLAT fastener and Nut attach the storage well to the Power island with the bracket.



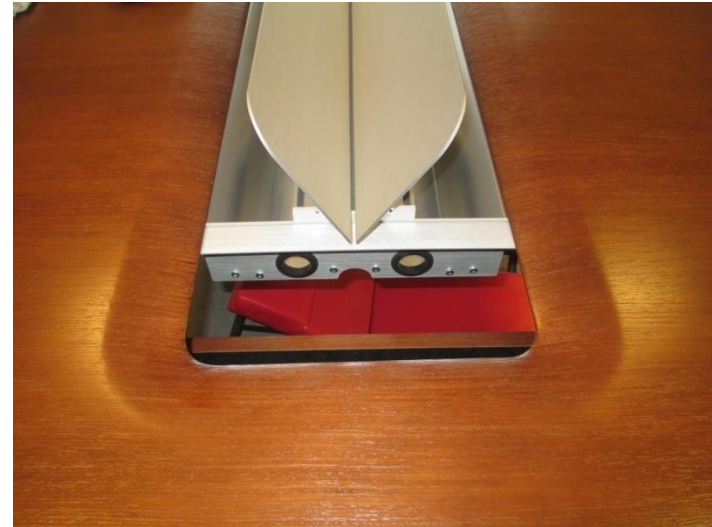
No Gap

- Assure that the Power Island is tight to the storage well wherever the Storage well meets the power island per figure to the right.



Installation Step 5 - Attaching the table top

- For a Flow XT Table Open the doors on the power Island to **avoid damage to the Top during this step.**



- Slide the top to within 4 inches of the two halves joining together and STOP. Close the doors on the Power island BEFORE joining the 2 halves together to avoid damage to the Top.



Installation Step 6

- Align the top with the corners of the bases utilizing the “L” shaped notches on the underside of the table.
- Validate that the Power Island is centered with the top prior to fastening to the base.
- With multiple piece tops join the two halves together utilizing the supplied draw tight hardware.



Look for
similar reveal
on both sides



Installation Step 7 - fastening the top

- Utilizing the 1" #12 screws provided with the hardware fasten the table top to the base using the brackets that are attached to the base. - Utilize all holes that are intended to attach the base to the top.



Installation Step 7 - Storage Well Install (If Included)

- If the table has a Storage Well included with the power trough assure that it is also fastened to the underside of the table with the 1" #12 screws.



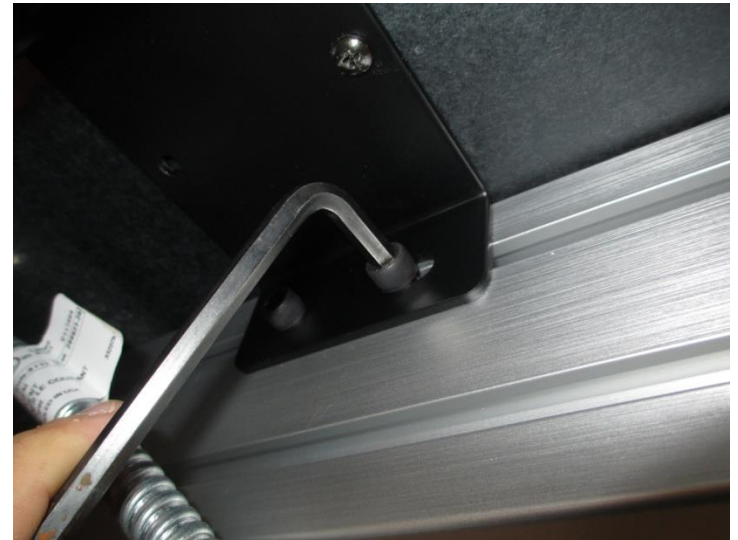
Installation Step 8

- Assure that the brackets that mount the Power Island to the Main beam are fastened to the underside of the table using the 1' #12 screws AND that the Power Island is flush with the underside of the table.
- If your table has gussets attach them to the table top using the 1" #12 screws.



Installation Step 9

- Tighten the cap screws that attach the power island to the main beam.
- Install the supplied shrouds per the figure to the right using the 10-12 - 1-1/4" screw



Flow XT Door Alignment Trouble Shooting

- If the Power Island is not flush to the underside of the table loosen the cap screws that connect the mounting bracket to the Power Island.
- Push the Power Island up against the underside of the table and tighten the bolts.
- Work you way around the table repeating this for each bracket.

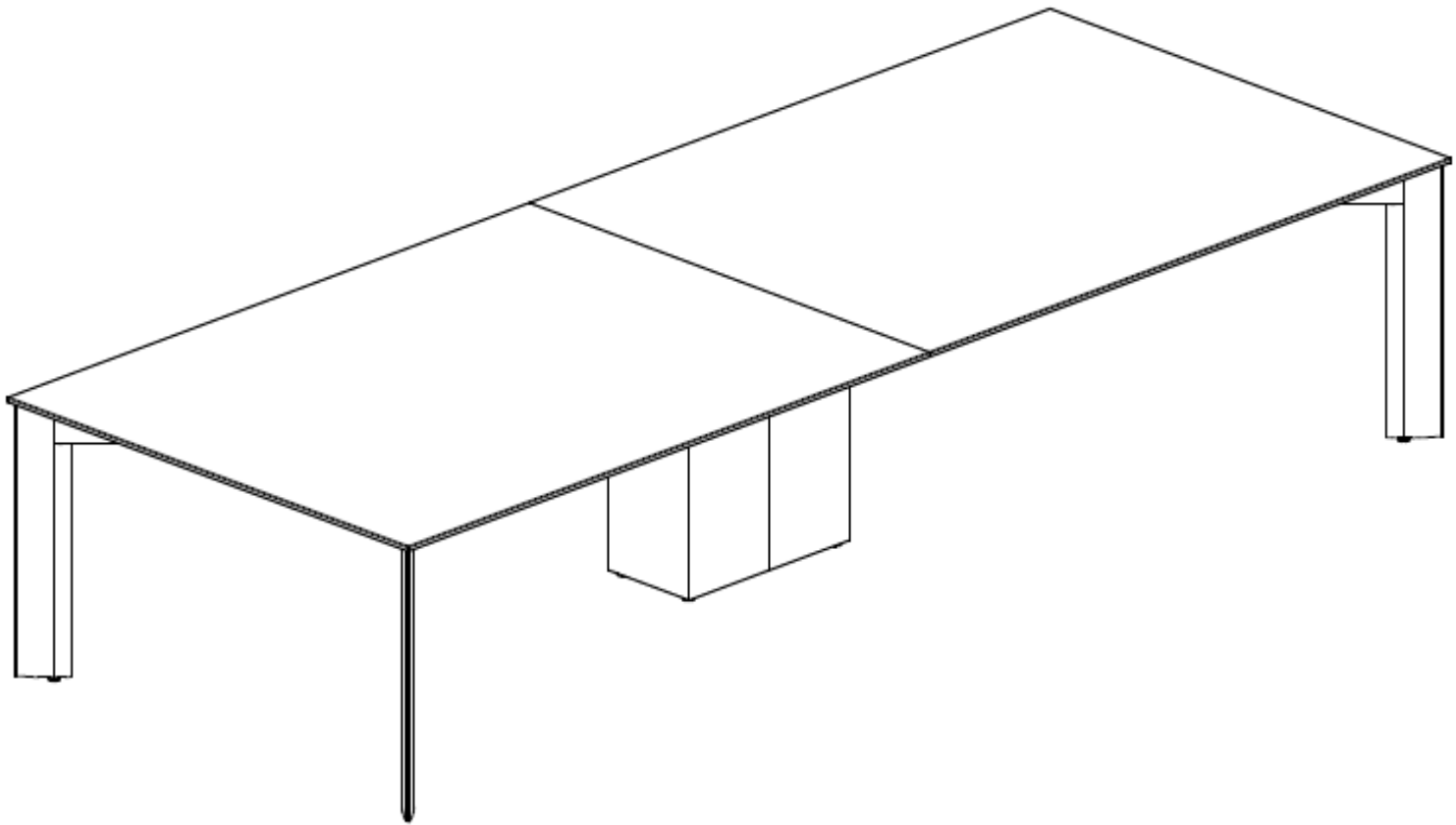


Flow XT Door Alignment Trouble Shooting

- If the Doors are not aligned similar to the picture to the right then use a rubber mallet, open the door slightly and tap the end of the door until the door is aligned - repeat for all doors that are not aligned.
- This process will not work for a storage well door. Utilize the hinges to adjust the storage well door alignment.
- After tapping all of the doors into alignment use a 1/16" allen wrench to tighten the hinge attachment screws per the photo to the right.



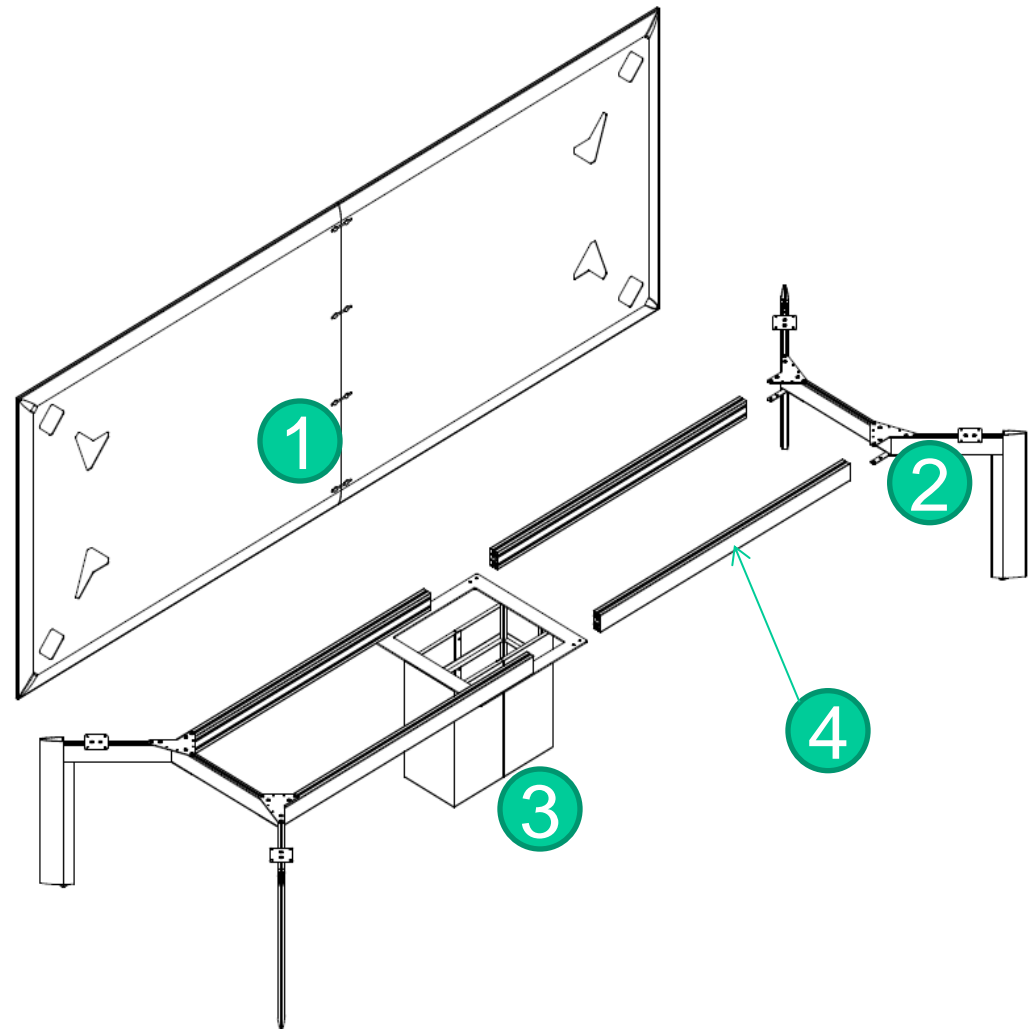
FLOW Table With Post Leg Bases



FLOW Table with Post Leg Bases Exploded

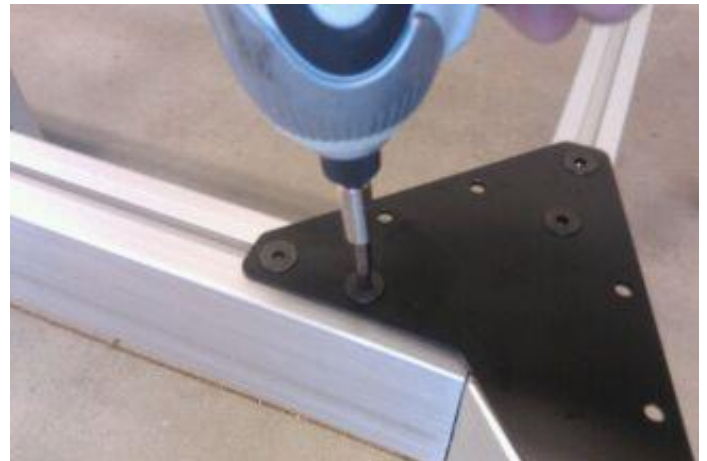
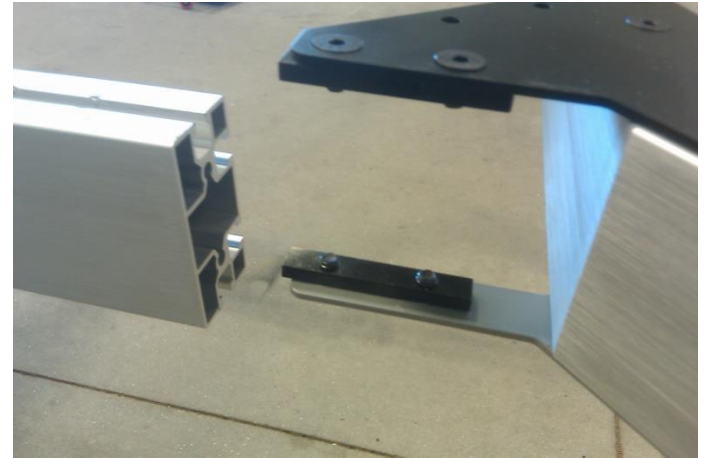
Flow Post Leg Component Description

1. Work Surface
2. End Base
3. Center Base
4. Main Beam



Installation Step 1

- Slide the clamp bars from the end base into the main beam.
- Tighten the screws that fasten the end base to the main beam.



Installation Step 2

- Attach the main beam to the center base per the photo to the right.
- Move to Step 2 in the Flow or Flow XT instructions above.

