

GEIGER

TEXTILES



ARCHITECTONIC COLOR™

A TEXTILE COLLECTION BY BASSAMFELLOWS

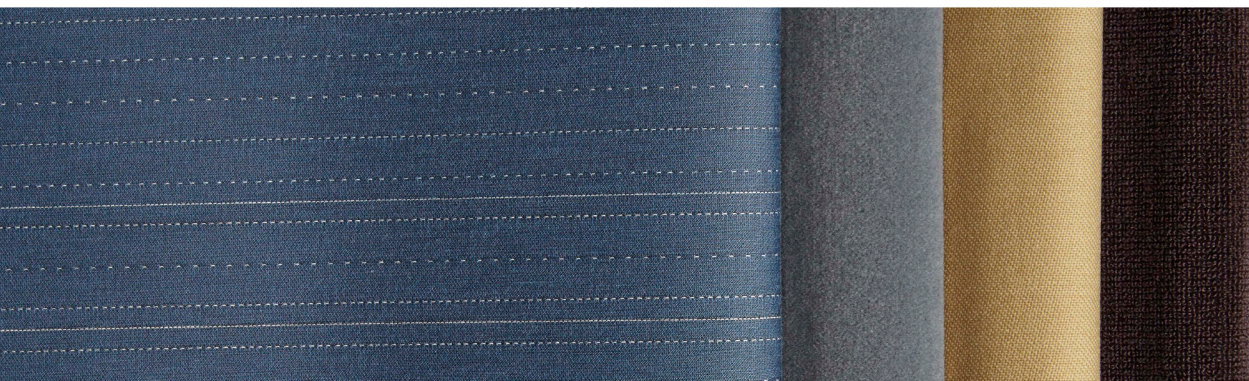
Inspired by a palette derived from pigments found in nature, the Architectonic Color introduces a rounded and balanced array of textiles for use in a variety of settings—residential or commercial, modern or contemporary. Each of the four available constructions—Sateen Weave, Staple, Stitch, and Wool Epingle—are simple yet sophisticated, applicable on their own or in tandem with one another. Available in a harmonious selection of colorways, Architectonic Color is not only highly compatible, but also sensual and timeless in its outlook—as evocative today as it will be in years to come.

DESIGN INSPIRATION

With a portfolio comprised of everything from lounge chairs to storage units, the work of BassamFellows emphasizes honest materials, solid construction, utility, and beauty without elaboration. Their pursuit of these principles finds form in a classic offering created for Geiger Textiles—Architectonic Color.

BassamFellows looked to Le Corbusier and his painterly use of color through art and architecture for inspiration. To Le Corbusier, the color concepts underpinning his constructions and designs were equally important as his floor plans and forms. He believed that a palette based on the history of natural pigments could only create color necessary to affect human emotion based on its more harmonious effect.

Working with exacting care to translate these colors into fabrics that offer either a chromatic color palette or a progression of neutrals, BassamFellows created an offering that possesses a natural, highly compatible appeal—one that Le Corbusier would certainly appreciate.



TEXTILE DESCRIPTIONS

SATEEN WEAVE

Sateen Weave has a luxurious hand and sophisticated sheen created by uniting a warp-faced sateen (or satin) weave and worsted wool composition.

Net Price: \$73 per yard

Price Category: 7

Content: 92% Wool, 8% Nylon

Abrasion: 40,000+ cycles, Martindale method

14 Colorways

STITCH

The tailored, embroidered look of Stitch echoes the aesthetic of top-stitching frequently seen in fashion, with a modern twist: It has a smooth, refined ground weave accented with columns of stitches in varying densities.

Net Price: \$105 per yard

Price Category: 9

Content: 58% Cotton, 26% Polyester, 16% Wool

Finish: Stain Resistant

Abrasion: 60,000 double rubs, Wyzenbeek method

8 Colorways

STAPLE

This classic solid is created by a dense, low pile, creating an elegant muted luster. Staple is comprised of 100% wool, and is simple to clean.

Net Price: \$103 per yard

Price Category: 8

Content: 100% Wool

Abrasion: 250,000+ cycles, Martindale method

11 Colorways

WOOL EPINGLE

This classic epingle construction is created by a technique where the loom is set up to lift the warp yarns and create an uncut loop that is then tacked down on the back of the fabric. This results in an extremely robust, durable textile.

Net Price: \$87 per yard

Price Category: 7

Content: 100% Wool

Abrasion: 65,000+ cycles, Martindale method

12 Colorways

All fabrics meet ACT Performance Guidelines for contract use.    