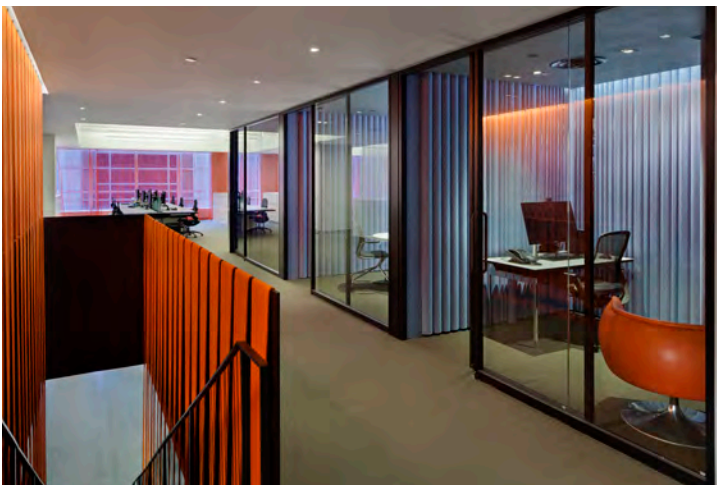
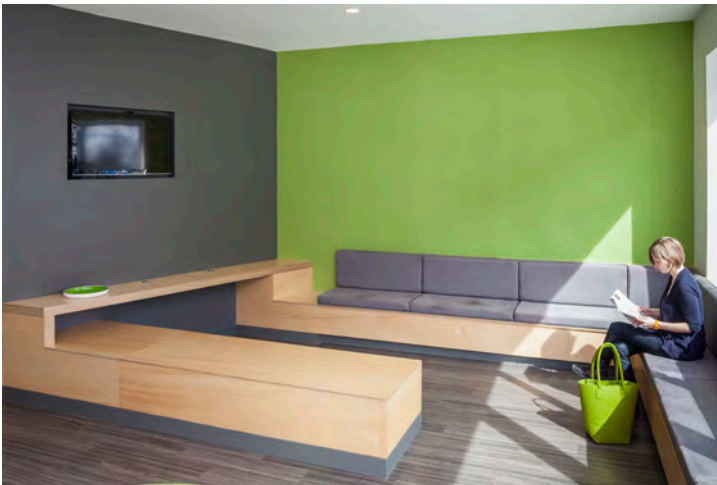




3mm Wool Design Felt

3mm Wool Design Felt



3mm Wool Design Felt is available for product, furniture, fashion, and vertical surface applications. The possibilities are limitless! Wool felt is one of the oldest man-made textiles and to produce felt, raw wool undergoes a wet felting process, which involves matting, condensing and pressing the fibers. Design Felt is high quality, eco-friendly, comes in highly saturated colors, and is perfect for demanding design applications. Please visit the About section at filzfelt.com for more information on the manufacturing process and characteristics of 100% Wool Design Felt.

Specifications

Name	3mm Wool Design Felt
Content	100% Merino or Karakul Wool
Origin	Germany
Thickness	3 mm (1/8 in)
Thickness Tolerance	±0.3 mm (±1/10 in)
Width	180 cm (70 3/4 in)
Width Tolerance	±4 cm (±1 3/5 in)
Weight	840 g / m² (48 oz / lin yd)
Backing	None
Primary Uses	Architectural Applications Lifestyle + Home Goods Wallcovering Wrapped Panels + Tackboards
Maintenance	Vacuum occasionally to remove general air-borne debris. Should soiling occur, clean with a mild, water-free dry cleaning solvent.
Durability	Light contract or residential (depending on application)
Custom	Custom colors and custom fabrication including cutting, lamination, stitching and embroidery available.
Variation	Wool felt is a natural material and minor changes and slight inclusions of natural fiber on the surface are evidence of the 100% natural origin of the material. The natural colorways are undyed wool and color variation may be more pronounced beyond normal commercial range.
Colorfastness to Light	Class 4-5 (40 hours)
Colorfastness to Crocking	Class 3-4 (wet), Class 4-5 (dry)
Environmental	Oeko-Tex® Standard 100 Certified Product Class II
Flammability	ASTM E 84: Class A (unadhered) CAL 117: Pass Euroclass EN 13501-1: B-s1-d0 (flame treated), D-s1-d0 (untreated), Bfl-s1-d1 (untreated) FAR 25.853(a): Pass (60 second vertical burn), Pass (12 second vertical burn) NFPA 260: Class 1
Durability + Strength	ASTM 4966 (Martindale Abrasion Tester Method): 5,000 Grade 4, 10,000 Grade 3.5, 20,000 Grade 2, 40,000 Grade 3 ASTM D 5034 (Grab Test): 243 lb (avg of warp), 214 lb (avg of weft)

Standard Colors

