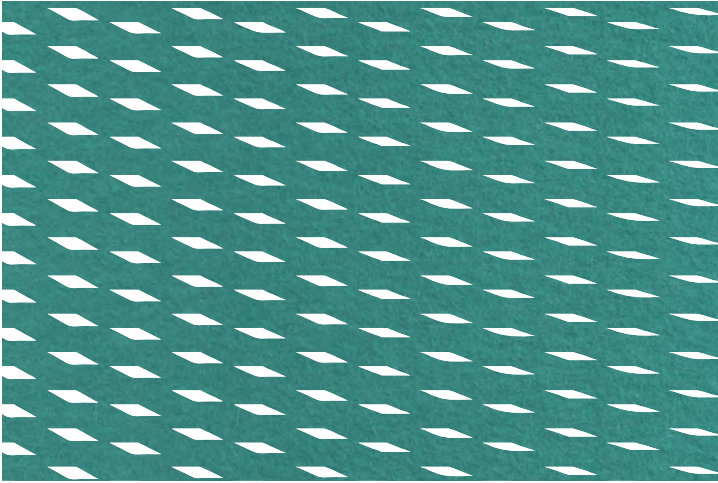




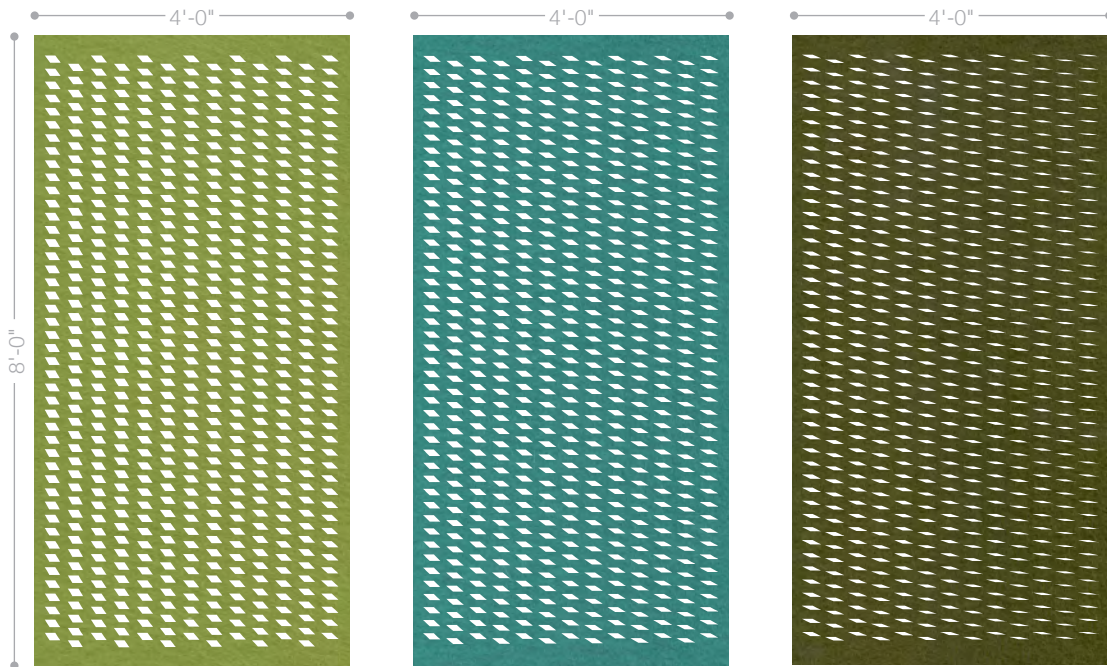
filzfelt

ARO Array 3

ARO Array 3



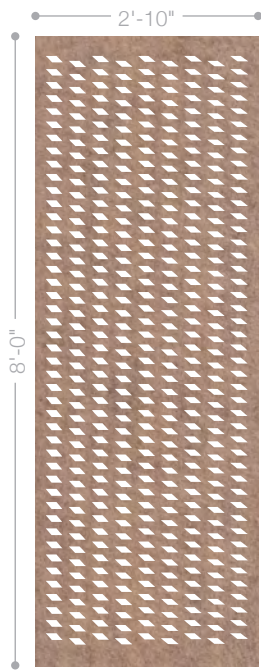
Sweeping movement across multiple panels is possible with ARO Array 3, which is created from horizontally transforming parallelograms. ARO Array hanging panels add texture, color, and modulated visibility to any space. ARO Array offers standard static and transforming patterns that can be used individually or in series. The panels define space, control light and view, and provide varied degrees of privacy.



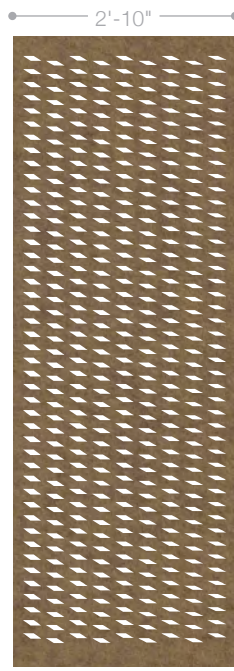
Medium 3.1

Medium 3.2

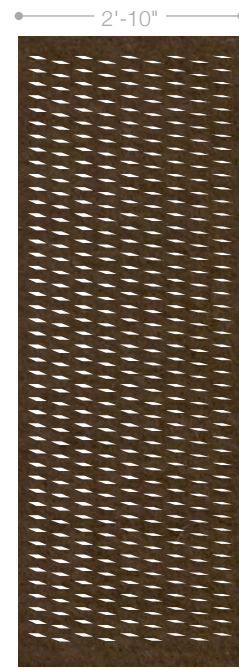
Medium 3.3



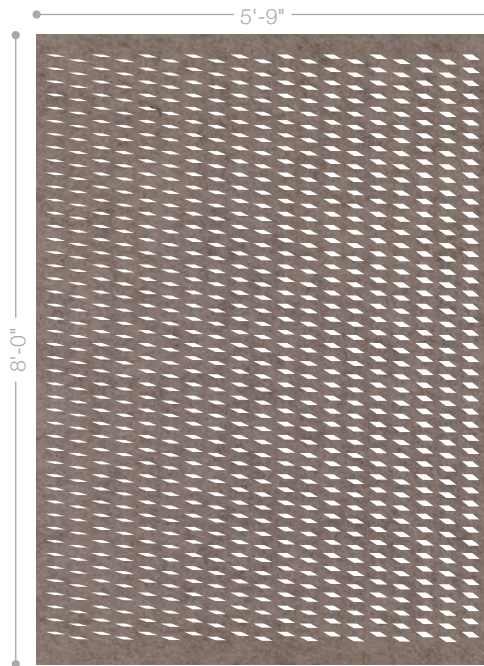
Small 3.1



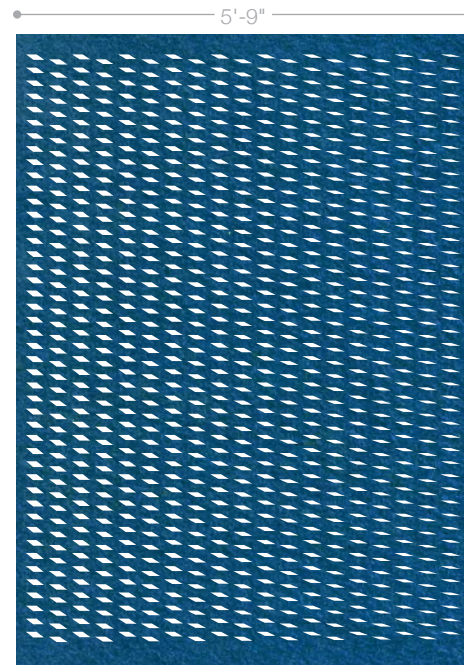
Small 3.2



Small 3.3



Large 3.1



Large 3.2

Specifications

Name	ARO Array 3
Designer	Architecture Research Office
Content	100% Wool Design Felt
Felt Thickness	5 mm (3/16 in)
Available Patterns	Array 3.1, Array 3.2, Array 3.3
Standard Sizes	Small: 2'-10" x 8'-0" (86.4 x 243.8 cm) Medium: 4'-0" x 8'-0" (121.9 x 243.8 cm) Large: 5'-9" x 8'-0" (175 x 243.8 cm)
Maintenance	Vacuum occasionally to remove general air-borne debris. Should soiling occur, clean with a mild, water-free dry cleaning solvent.
Durability	Contract or residential
Lead Time	All hanging panels are made to order and certain lead times will apply.
Track System	Compatible with FilzFelt's Hanging Panel Track System
Custom	Custom sizes and patterns
Variation	Wool felt is a natural material and minor changes and slight inclusions of natural fiber on the surface are evidence of the 100% natural origin of the material. Variations in temperature and humidity can expand or contract the fibers affecting the size and shape of felt pieces. Therefore, please note that sizes may vary up to ±0.5 inch.
Colorfastness to Light	Class 4-5 (40 hours)
Colorfastness to Crocking	Class 3-4 (wet), Class 4-5 (dry)
Environmental	Oeko-Tex Standard 100 Certified Product Class II
Flammability	ASTM E 84 Class A Euroclass EN 13501-1: B-s1-d0 (flame treated), D-s1-d0 (untreated)

Standard Colors

