

filzfelt •

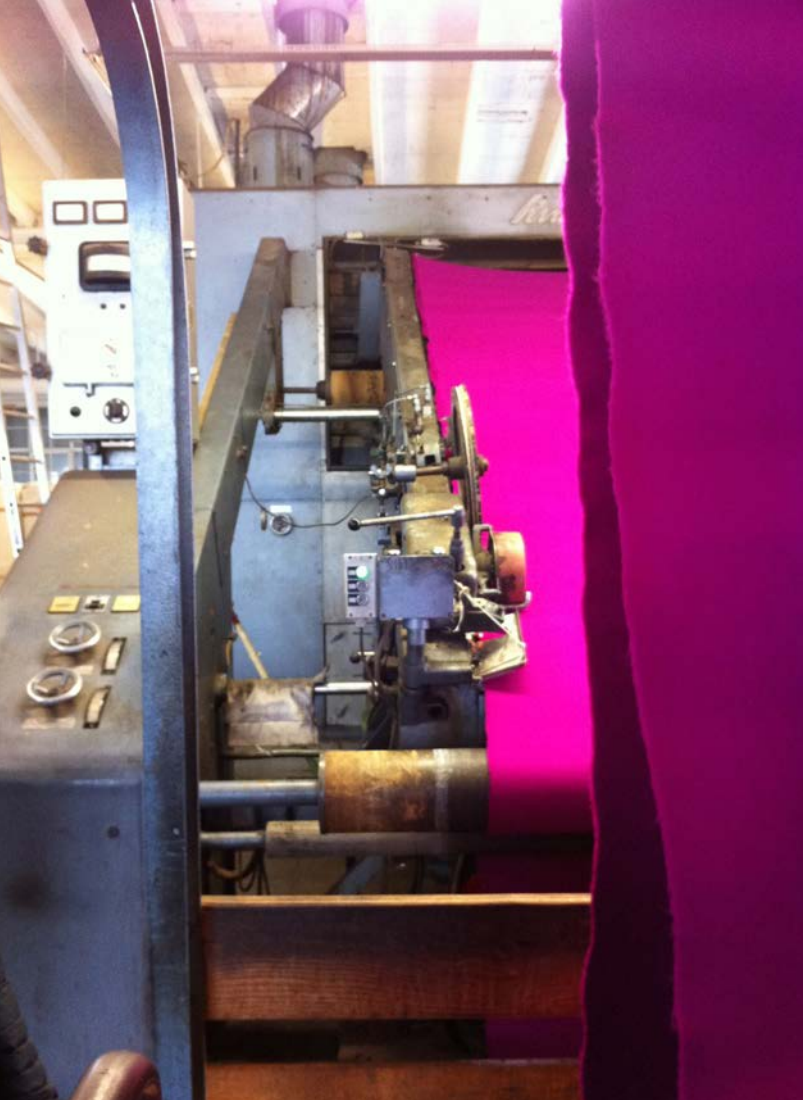
Architecture Research Office Collection

Contents

“Intellectually engaging and
materially sensuous design
creates a resonance between
idea and form.”

- Architecture Research Office

| | |
|--------------|----|
| Introduction | 4 |
| ARO Plank | 8 |
| ARO Shingle | 26 |
| ARO Baffle | 32 |
| ARO Array | 36 |
| Color Chart | 62 |



About FilzFelt

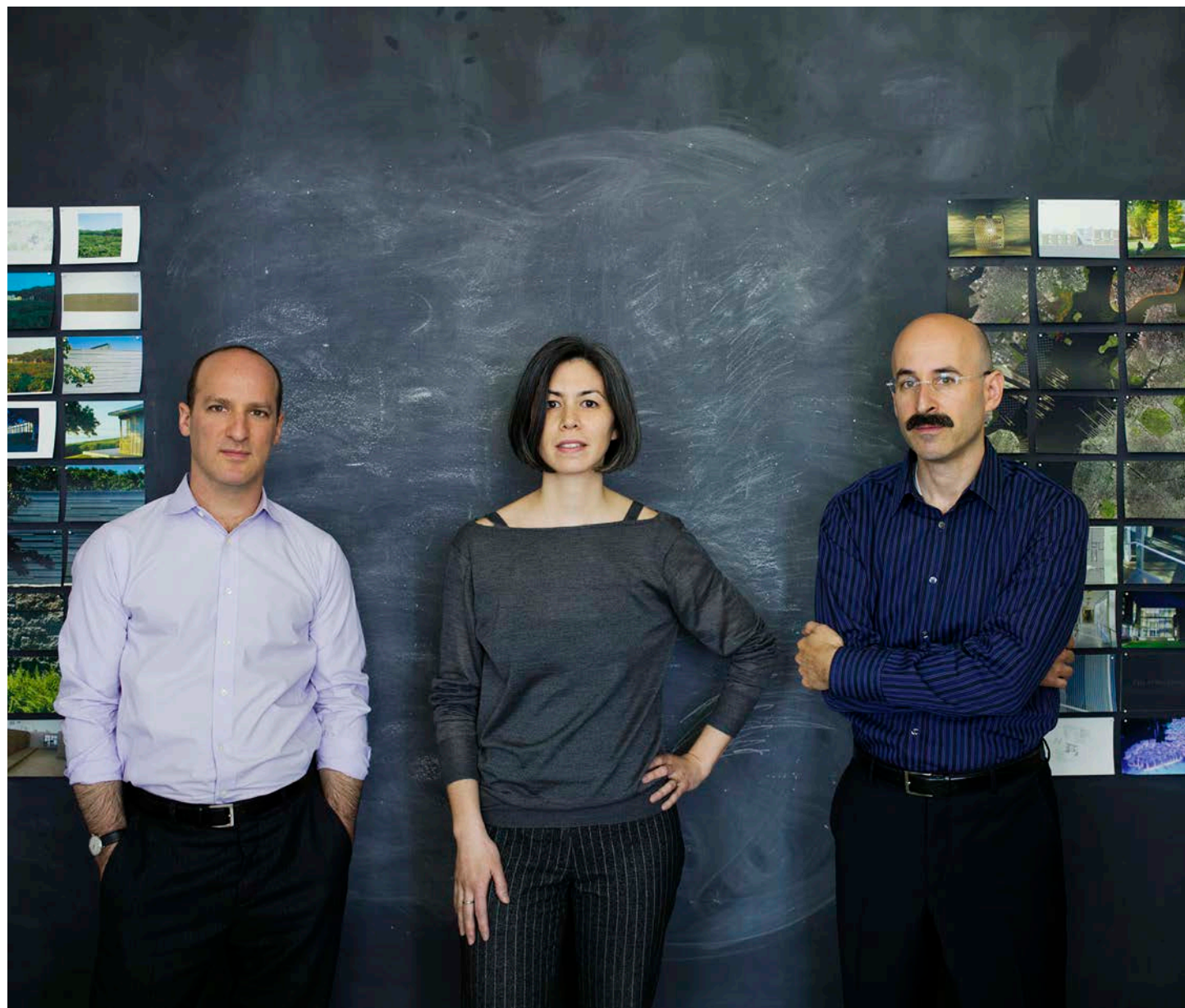
We sell felt.

FilzFelt carries German-milled 100% Wool Design Felt and felt products that include acoustic products, drapery, floor coverings, hanging panels and wall panels plus provides full custom fabrication services.

Wool felt is one of the oldest man-made textiles. As felt is a non-woven fabric and does not require a loom for its production, ancient people were able to produce it quite easily. To produce felt, raw wool undergoes a wet “felting” process, which involves matting, condensing and pressing the fibers. Design Felt is high quality, eco-friendly (wool content!), comes in highly saturated colors, and is perfect for demanding design applications.

Go Sheep!

Sheep's wool is highly regarded for its crimped, elastic fibers that are easily felted to form a fabric that cannot be pulled apart. This translates into durability, excellent dye ability, resistance to flame and compression, and thermal and sound insulation. Plus, this natural fiber is a rapidly renewable resource (it grows back!) and is completely biodegradable.



Architecture Research Office Collection

As workplaces become more open, enable multiple work styles, and foster collaboration, controlling sound and minimizing distractions becomes essential. The Architecture Research Office Collection combines the natural beauty of 100% Wool Design Felt with repetition and pattern to create acoustic architectural finishes that are elegant and easy to install. Solutions for the wall, ceiling, and dividing space allow acoustic and privacy customization by combining standard components.

ARO Plank and Shingle evoke movement and are quietly animated by light and shadow. Composed of 3mm 100% Wool Design Felt vacuum formed to acoustic foam or PET substrate, these wall systems enable variation across large areas by combining standard modules. ARO Baffle provides optimal acoustic absorption and creates subtle patterning across the ceiling. And a reinterpretation of FilzFelt's standard Hanging Panels, ARO Array investigates stasis and movement with transformational geometric patterns that provide varying privacy. Combined with the Hanging Panel Track System, the panels provide different degrees of privacy and enable flexible space division with visual and acoustic separation.

About Architecture Research Office

Architecture Research Office is the New York City firm led by Stephen Cassell, Kim Yao, and Adam Yarinsky. Founded in 1993, ARO has earned a reputation for elegant, innovative, and imaginative architecture born out of relentless exploration and engagement.

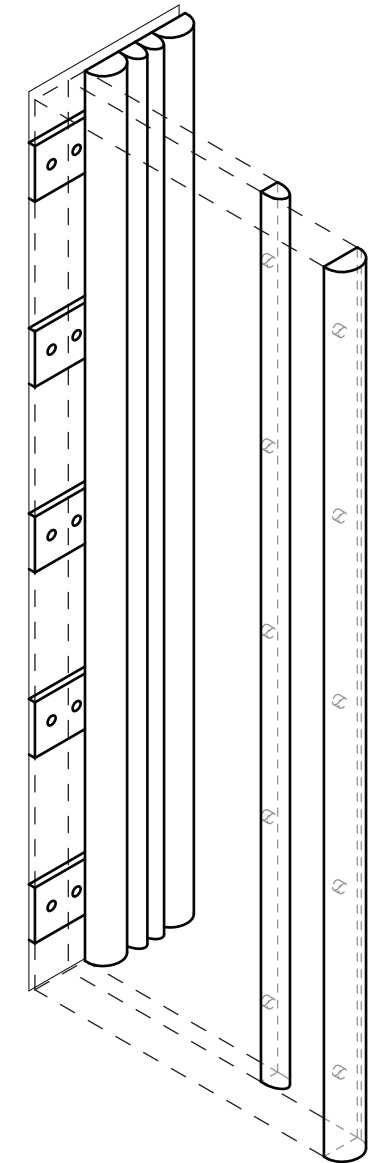
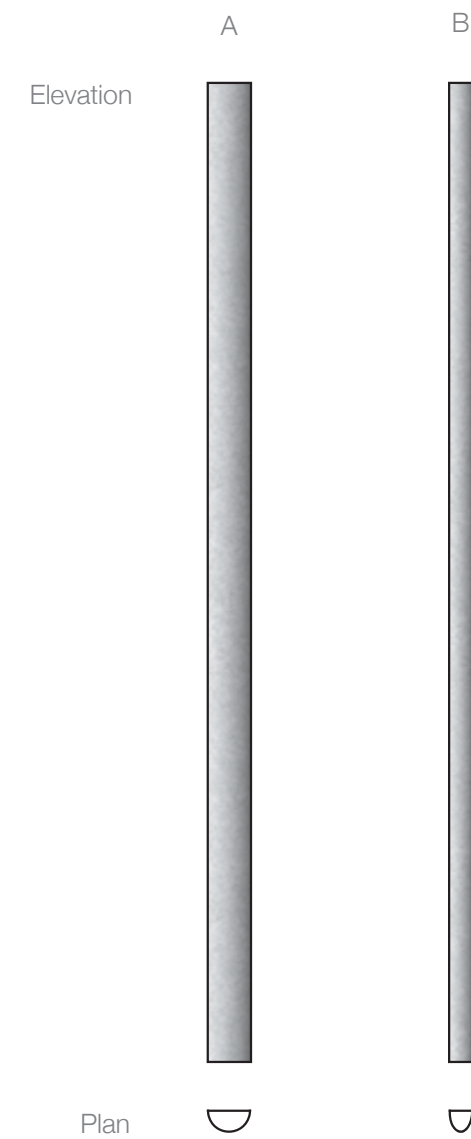
Through investigation, analysis, and testing, Architecture Research Office creates designs that unite the conceptual and the pragmatic within a strong, compelling vision. This research-driven process enables the firm to operate on a wide variety of projects spanning strategic planning, architecture, and urban design, and to craft elegant solutions to seemingly intractable problems. From a 1,000-square-foot, low-income, sustainable housing prototype to a proposal to reinvent the role of ecology and infrastructure in New York City, ARO's work is materially sensuous, intellectually rigorous, and socially engaging.

Architecture Research Office received the 2011 Cooper-Hewitt National Design Award for Architecture, and the American Academy of Arts and Letters honored the firm with their 2010 Academy Award for Architecture. The firm's work has been exhibited widely and is in the permanent collections of the Museum of Modern Art, the Art Institute of Chicago, and the Cooper-Hewitt, National Design Museum.

ARO Plank

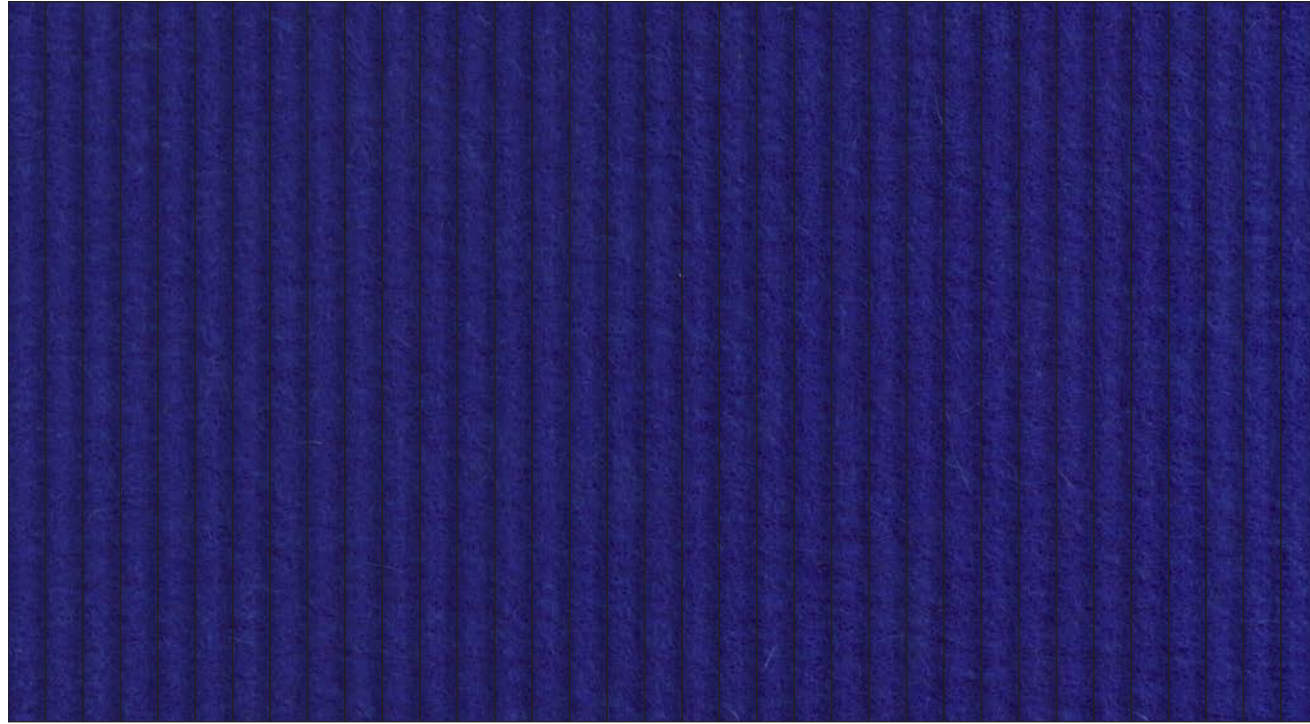


ARO Plank 1



ARO Plank 1 has two distinct half round modules that are composed of felt-covered extruded acoustic foam and available in four standard configurations. The planks install quickly and easily with FilzFelt's Interlock Mounting System and are available in 63 colors of 3mm Wool Design Felt.

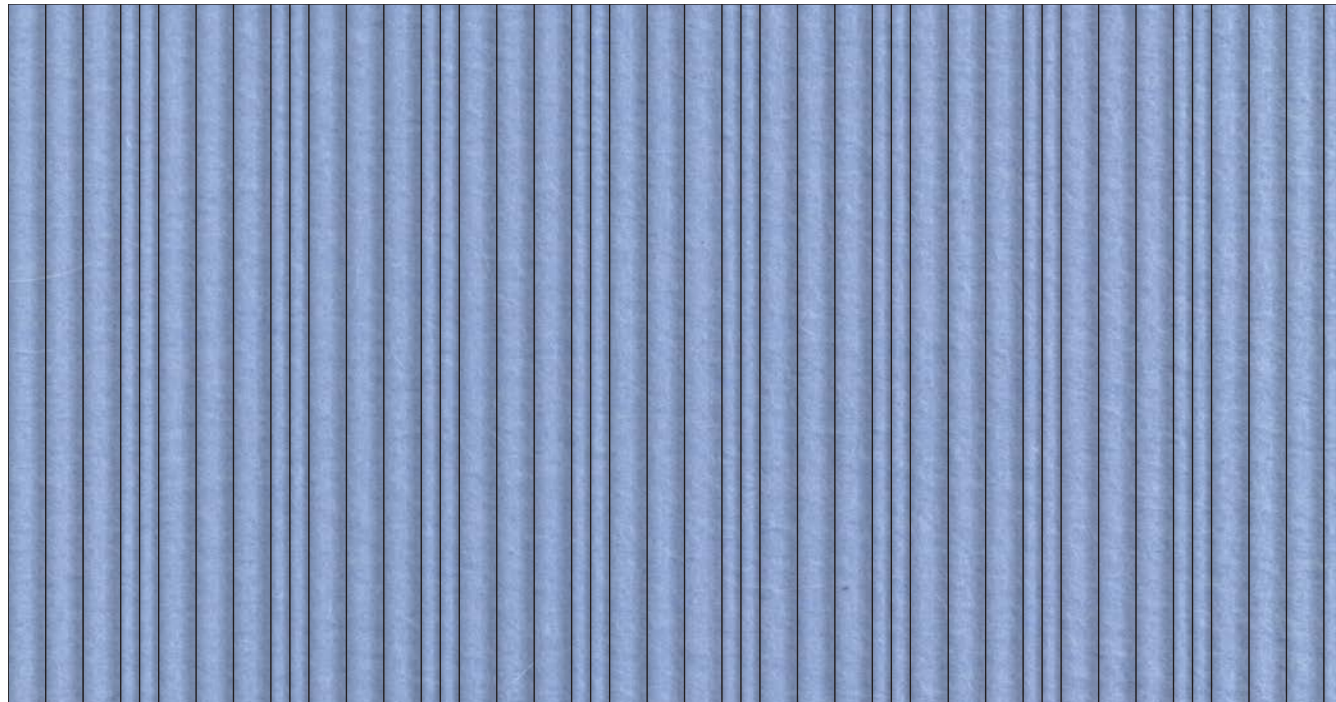
ARO Plank 1.1



A A

Repeat: A | Repeat Width: 4 1/4"

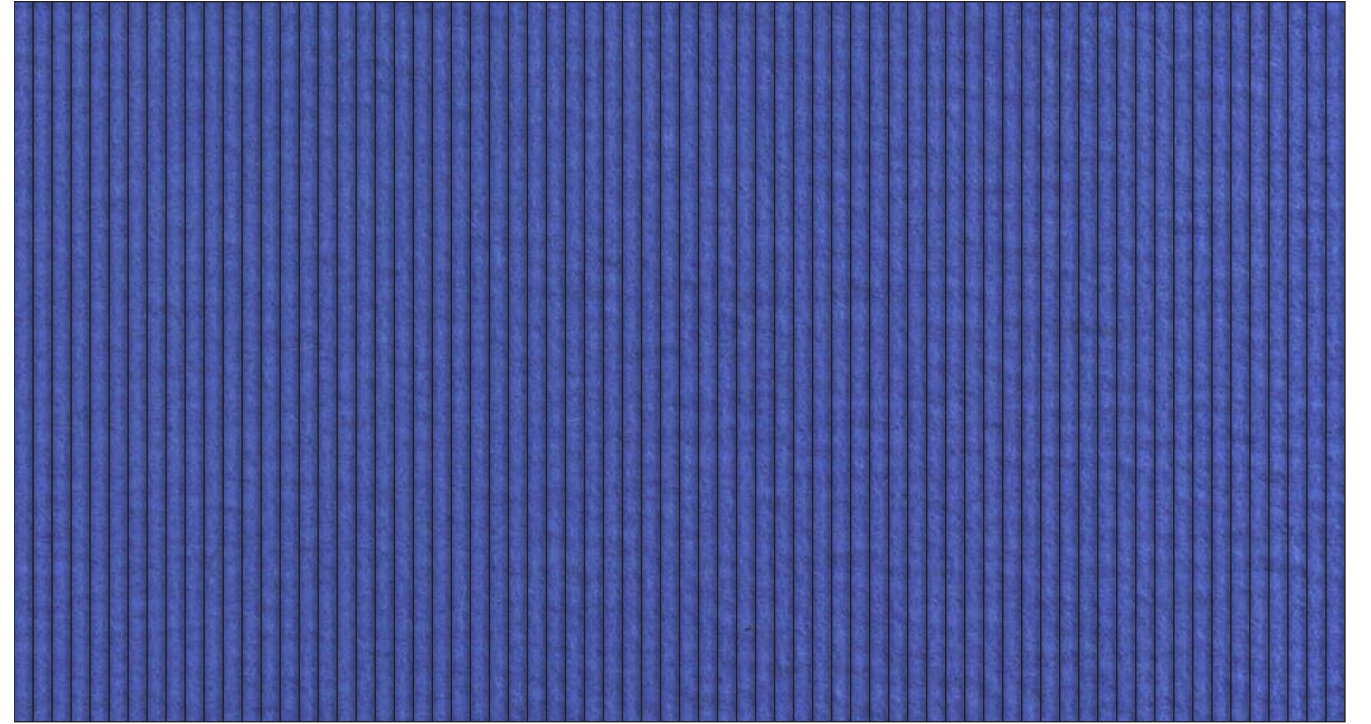
ARO Plank 1.3



A A A BB A A A BB A A A BB A A A BB A A A BB A A A BB A A A BB A A A BB A A A B

Repeat: AAABB | Repeat Width: 1'-5 1/4"

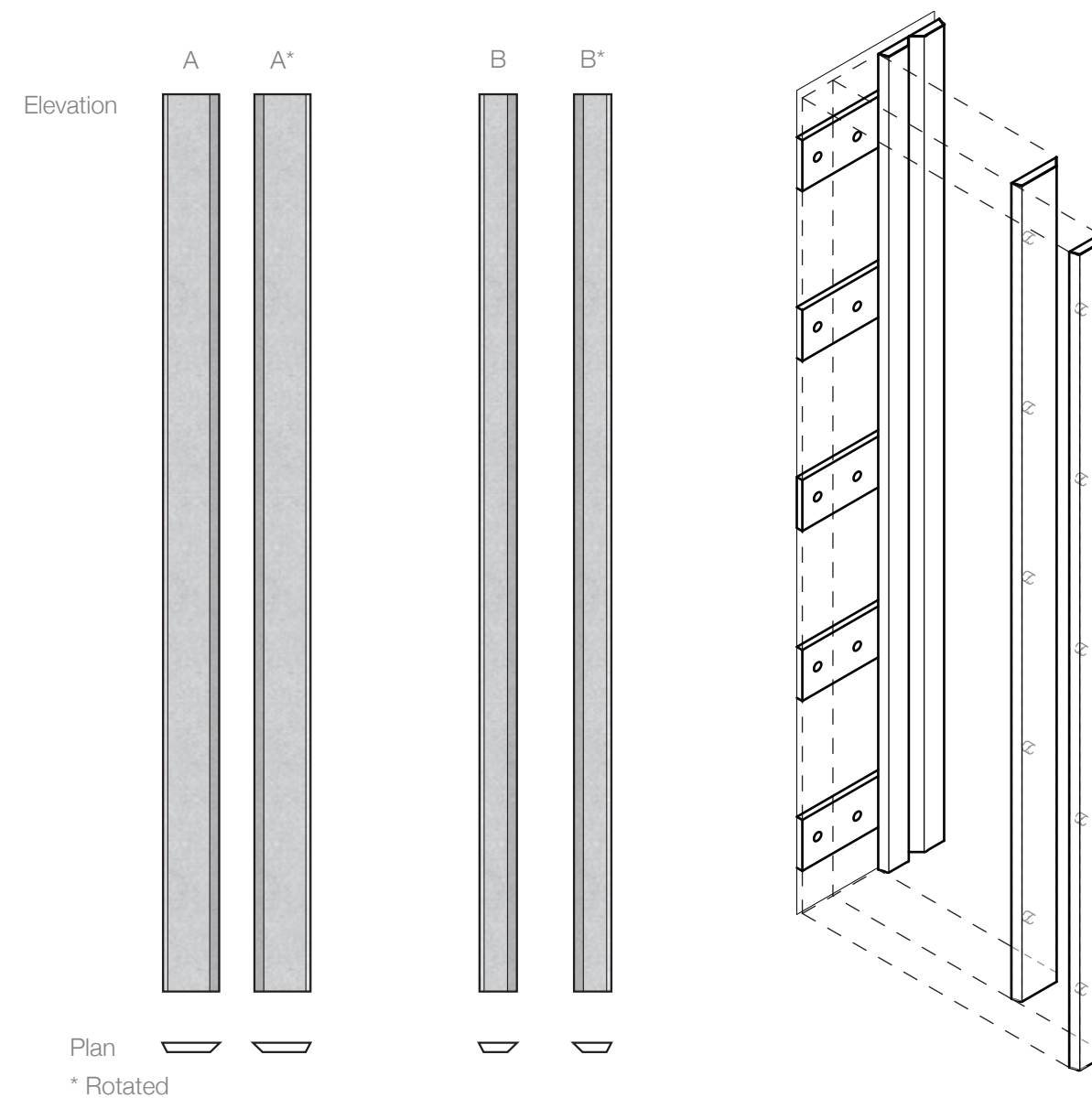
ARO Plank 1.2

[illegible]

Repeat: B | Repeat Width: 2 1/4"



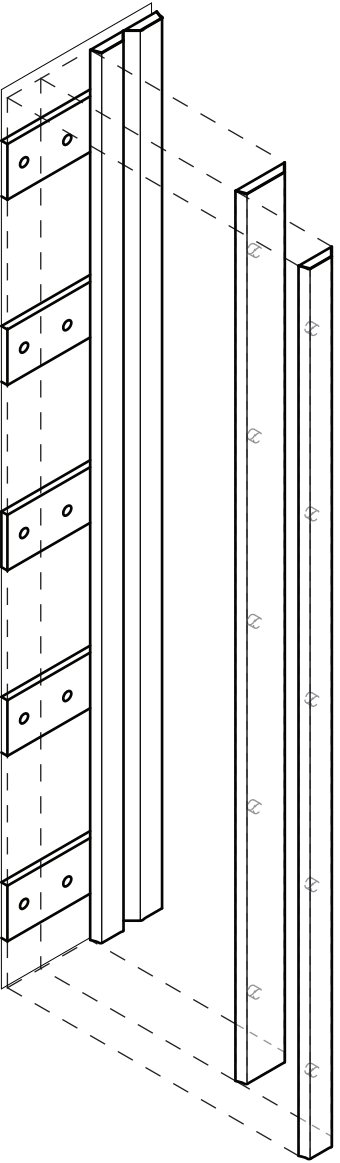
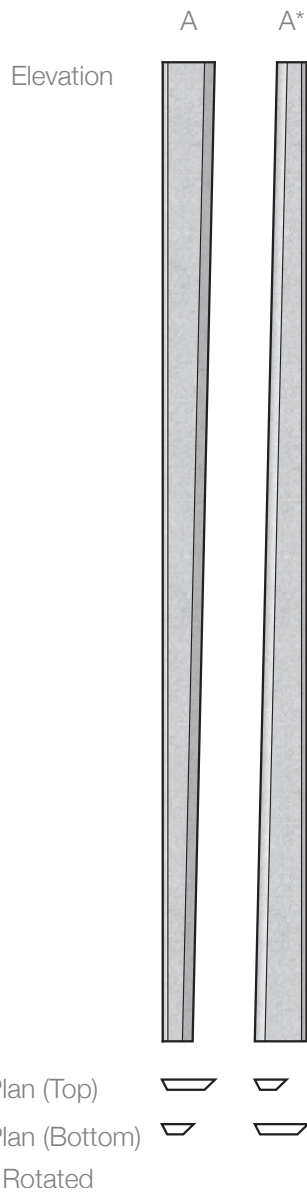
ARO Plank 2



ARO Plank 2 has two faceted modules: Wide (A) and Narrow (B). Modules have angled edges and rotate 180 degrees for additional variation in pattern. Composed of felt-covered 10mm acoustic PET substrate, this module is available in six standard configurations. The planks install quickly and easily with FilzFelt's Interlock Mounting System and are available in 63 colors of 3mm Wool Design Felt.



ARO Plank 3



ARO Plank 3 has one faceted module which is rotated and repeated. The modules are composed of felt-covered 10mm acoustic PET substrate in one configuration. The planks install quickly and easily with FilzFelt's Interlock Mounting System and are available in 63 colors of 3mm Wool Design Felt.



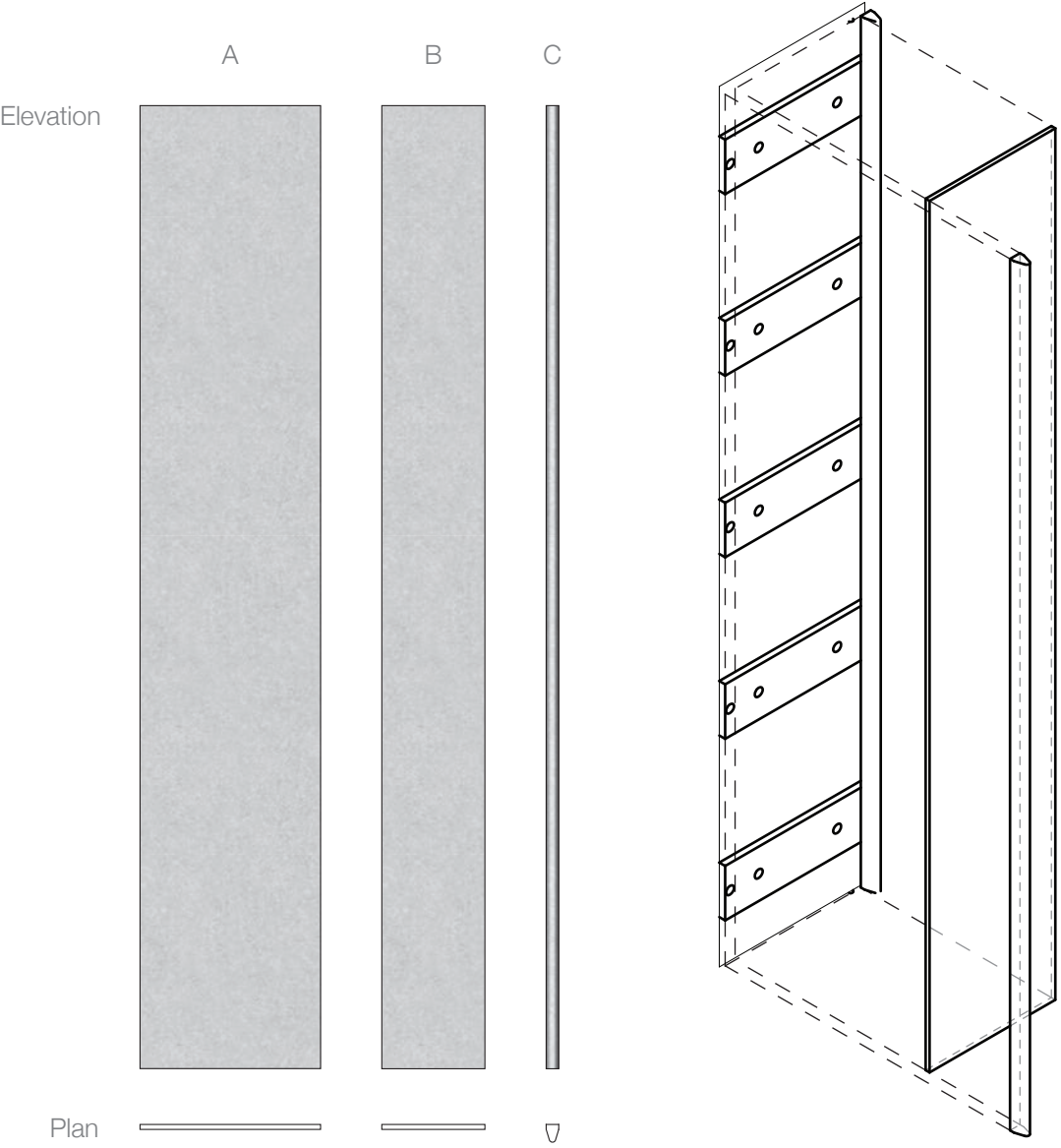
ARO Plank 3



A A* A A* A A* A A* A A* A A* A A* A A* A A* A A* A A* A A* A A* A A* A A*
Repeat: A A* | Repeat Width: 8"

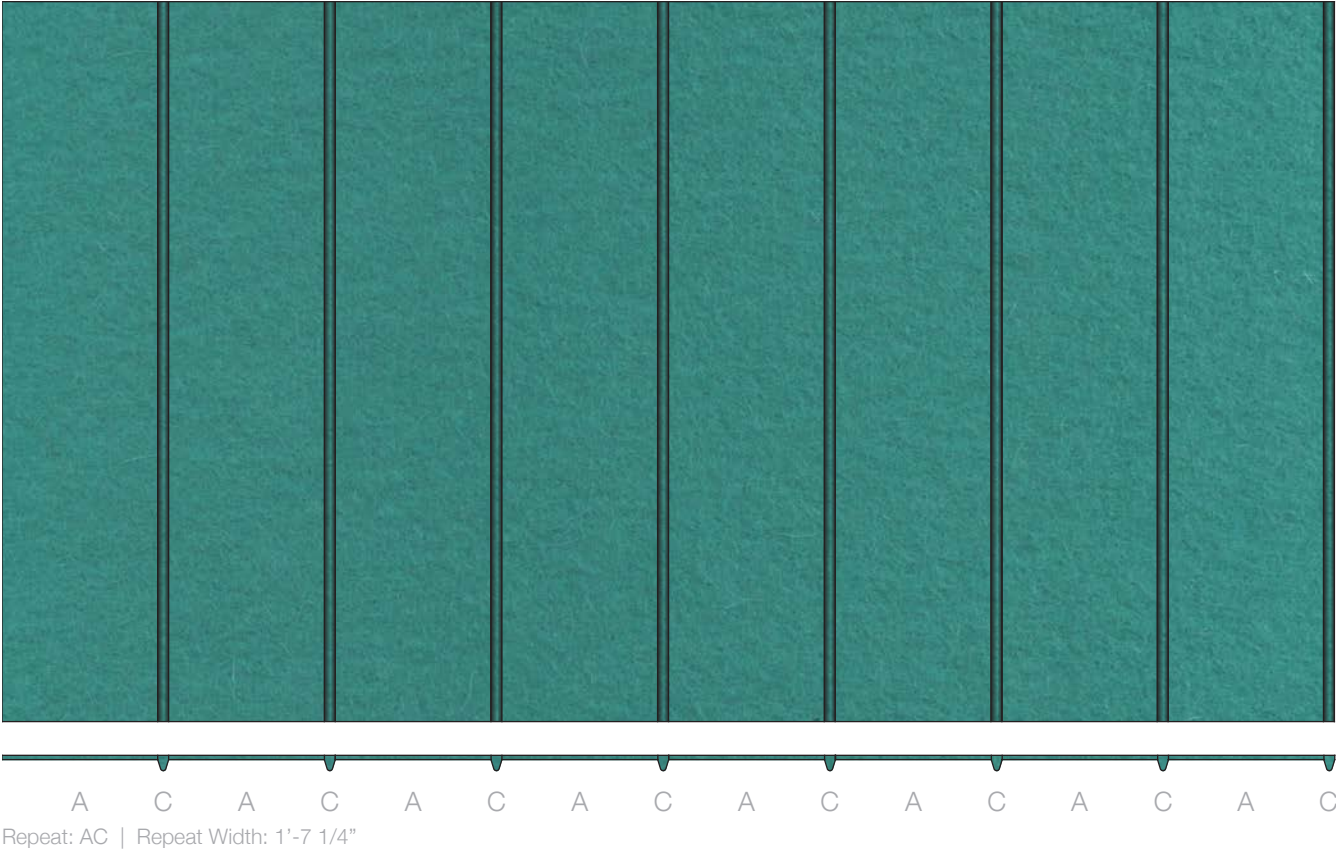


ARO Plank 4

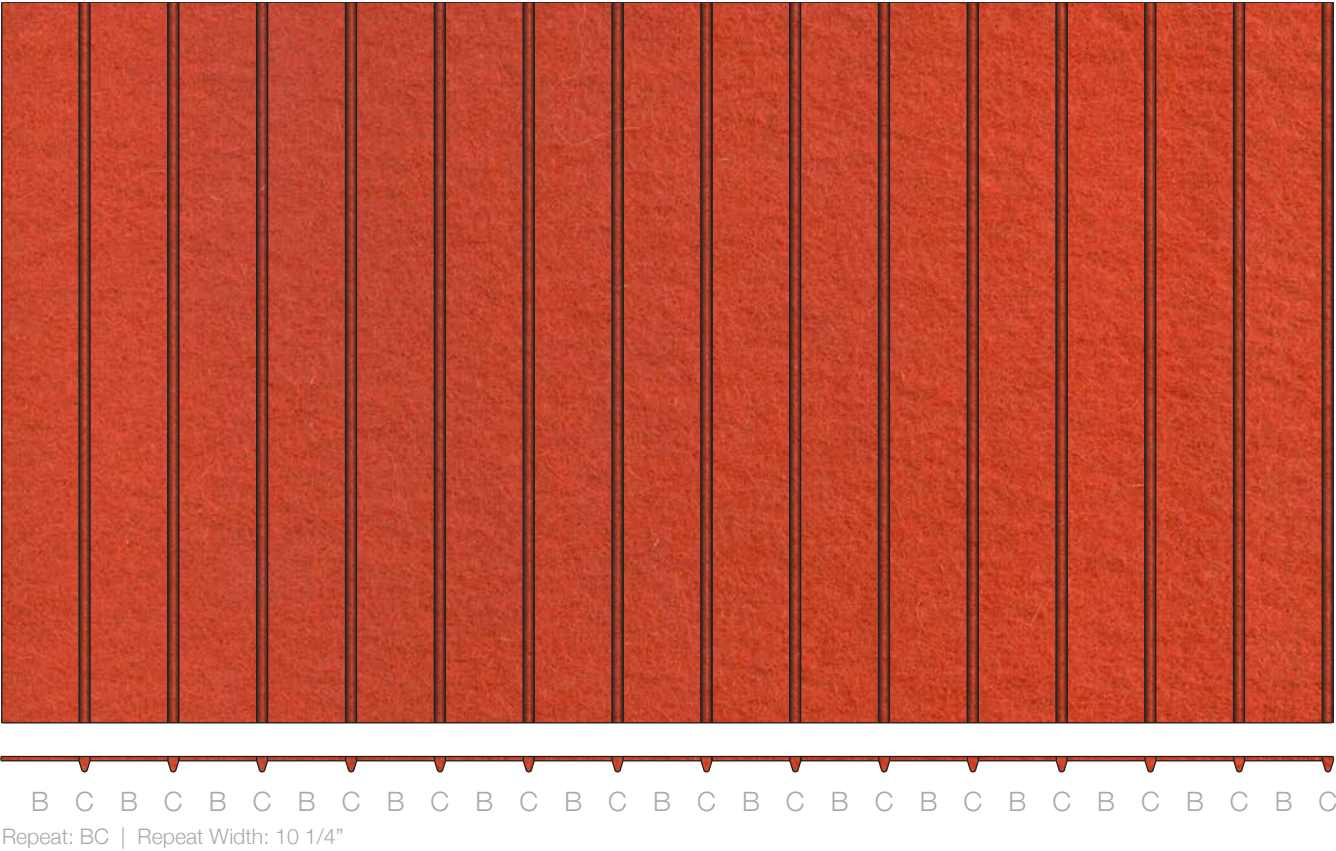


ARO Plank 4 has three distinct modules: Wide (A), Narrow (B), and Rib (C). Flat planks are accented by ribs, creating a striped, corrugated effect available in six standard configurations. Flat modules are composed of felt-covered 10mm acoustic PET substrate and Rib modules are felt-covered MDF. The planks install quickly and easily with FilzFelt's Interlock Mounting System and are available in 63 colors of 3mm Wool Design Felt.

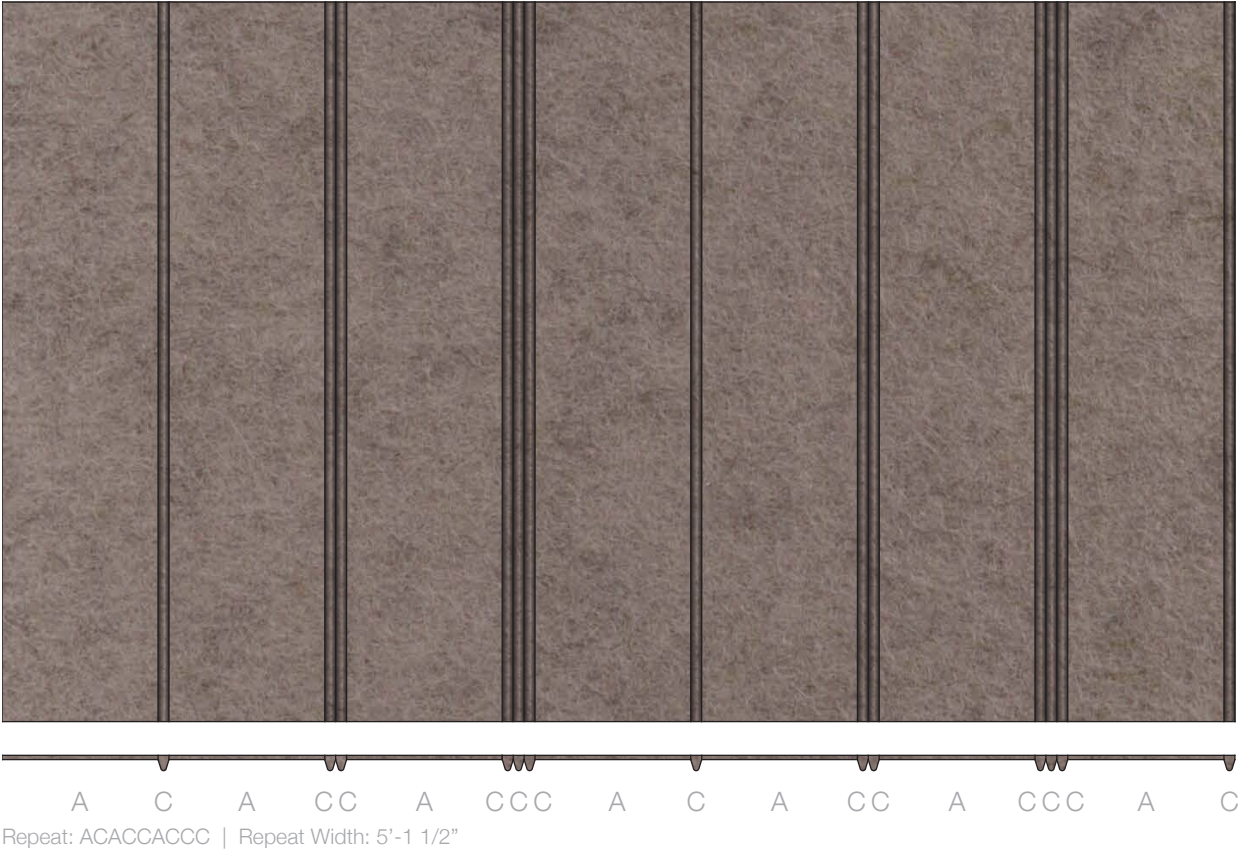
ARO Plank 4.1



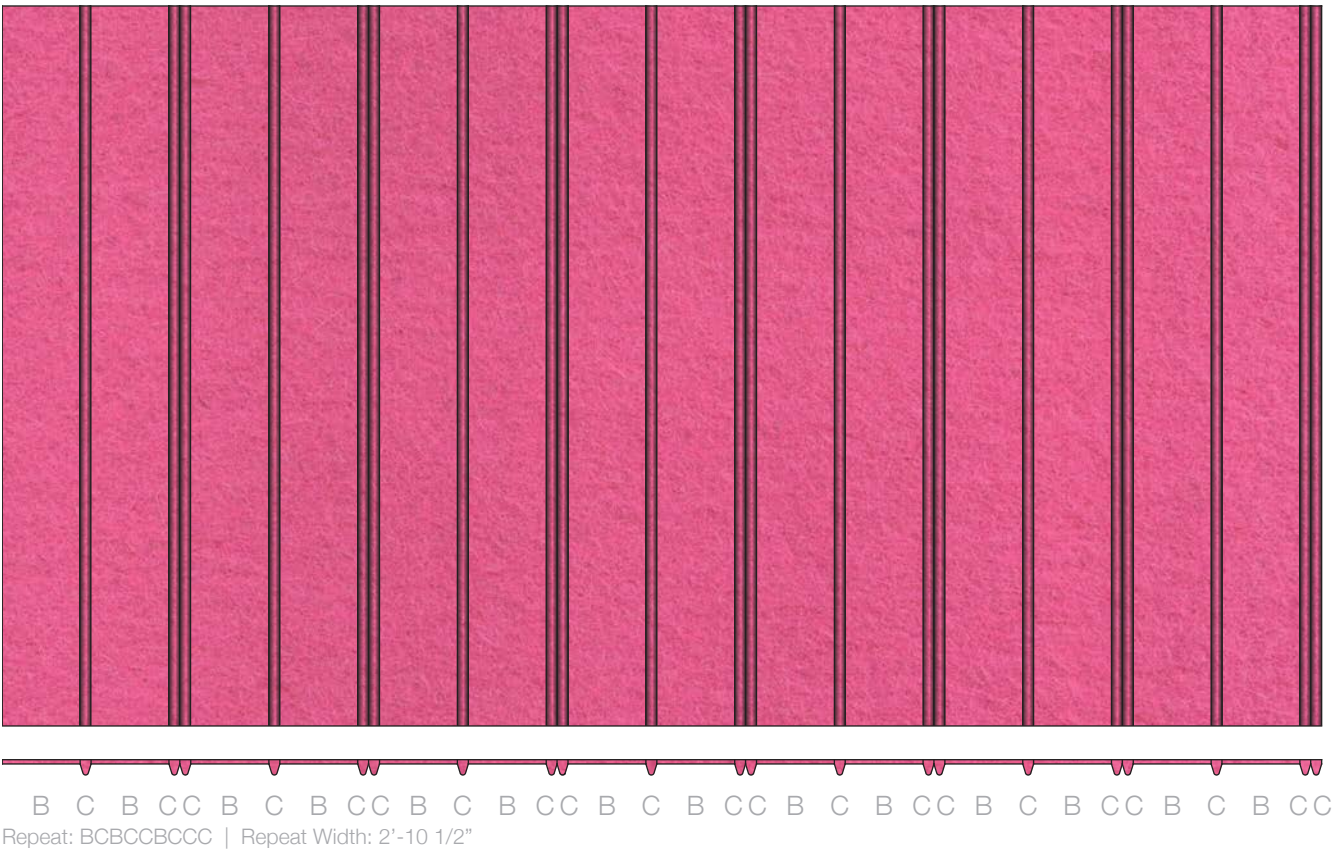
ARO Plank 4.3



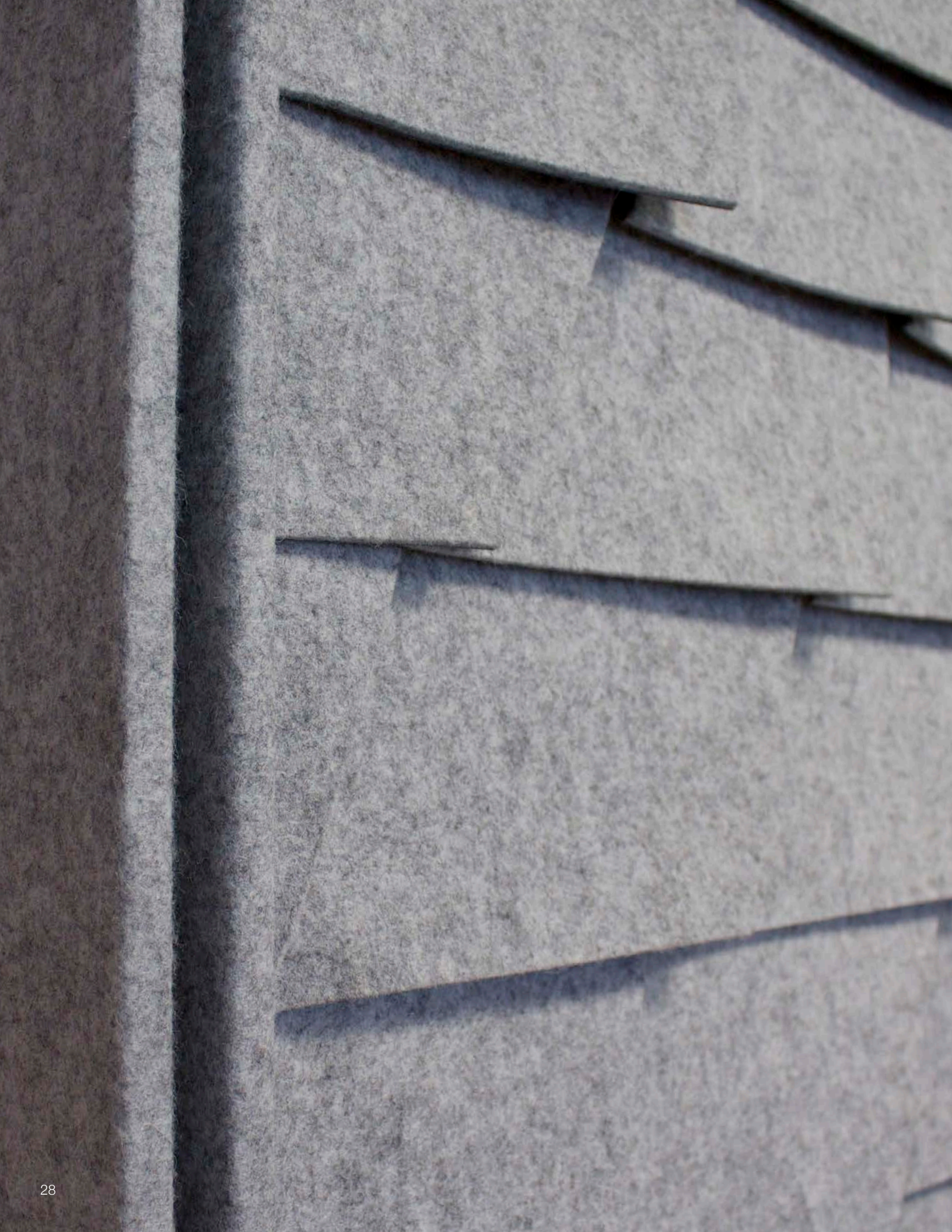
ARO Plank 4.2



ARO Plank 4.4



ARO Shingle

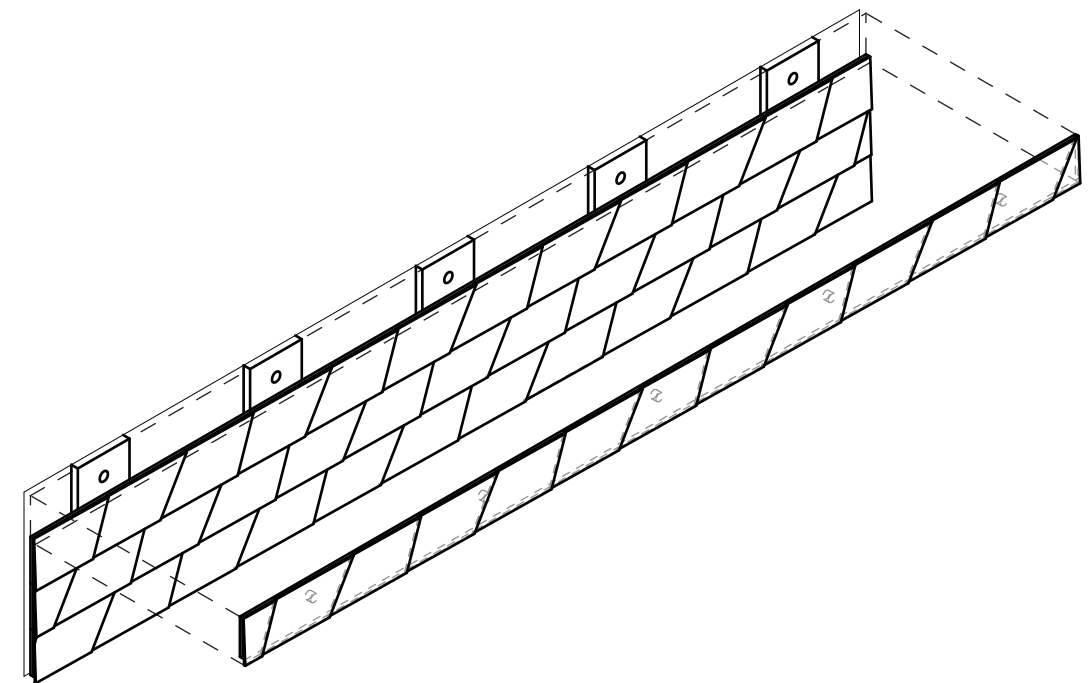
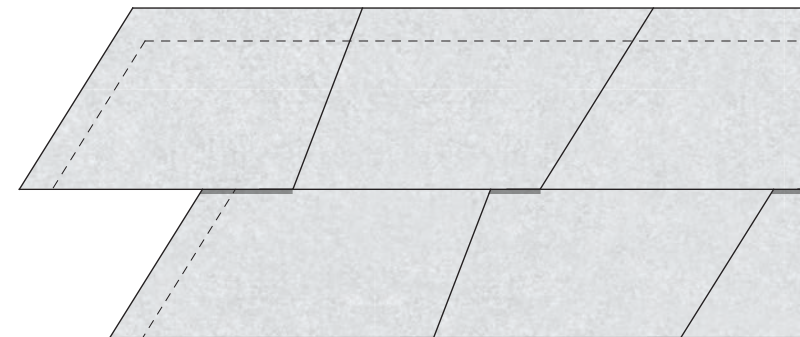


ARO Shingle 1

Elevation

A

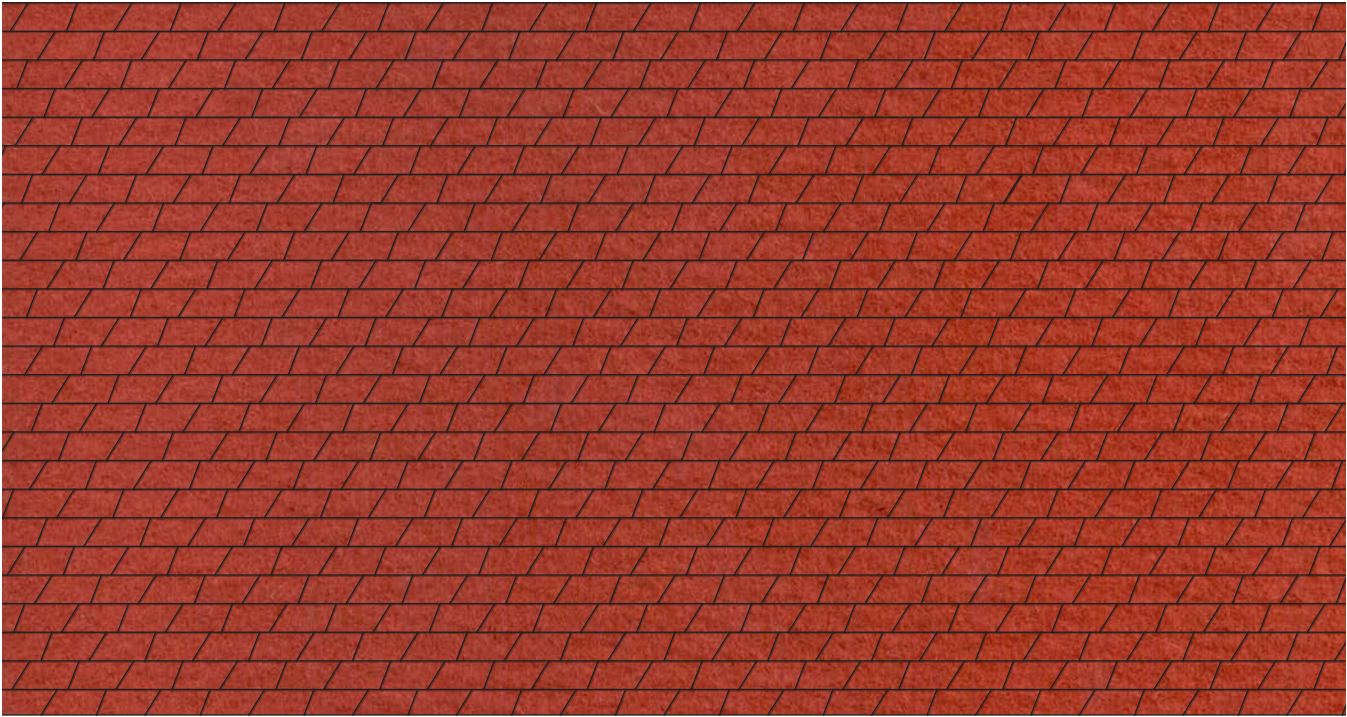
B



ARO Shingle 1 is a wall system composed of individual courses that create a continuous, shingled effect when patterned across a larger surface. ARO Shingle 1 has two distinct tile profiles and the tile courses are offset to create multiple pattern readings. The tiles overlap each other vertically and horizontally and 10mm acoustic PET substrate backs each tile. The courses attach to vertical strapping with FilzFelt's Interlock Mounting System and are available in 63 colors of 3mm Wool Design Felt.



Shingle 1.1



ARO Baffle

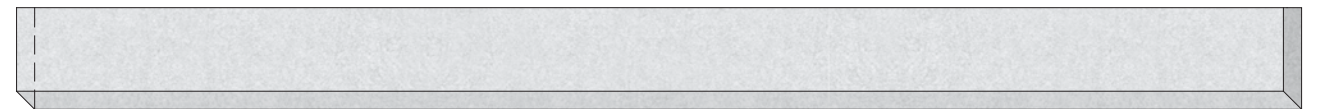


Remix High Back Chair
Fleming Design
Bertoia Collection
Harry Bertoia
Platner Collection
Warren Platner



ARO Baffle 1

Front Elevation



Back Elevation



Side Elevation 1



Side Elevation 2



Plan



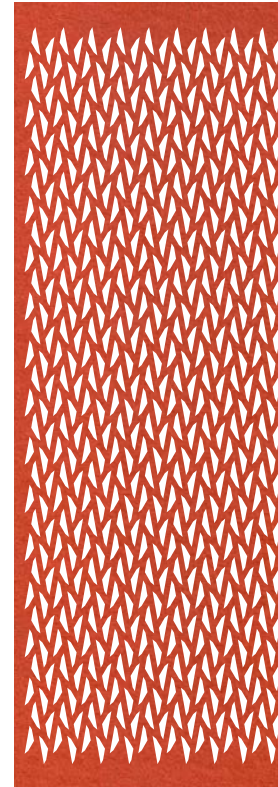
ARO Baffle 1 is a felt ceiling system that adds texture, color, and acoustic performance to any space. The system is composed of individual, acoustically absorptive baffles with chamfered edge detail that combine to create a continuous, open ceiling. Individual baffles can be arranged at varied spacing allowing the integration of lighting and mechanical systems and are available in 63 colors of 3mm Wool Design Felt.

ARO Array

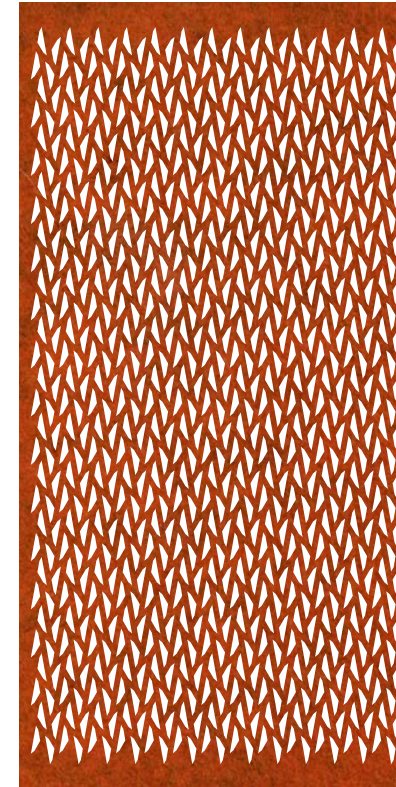




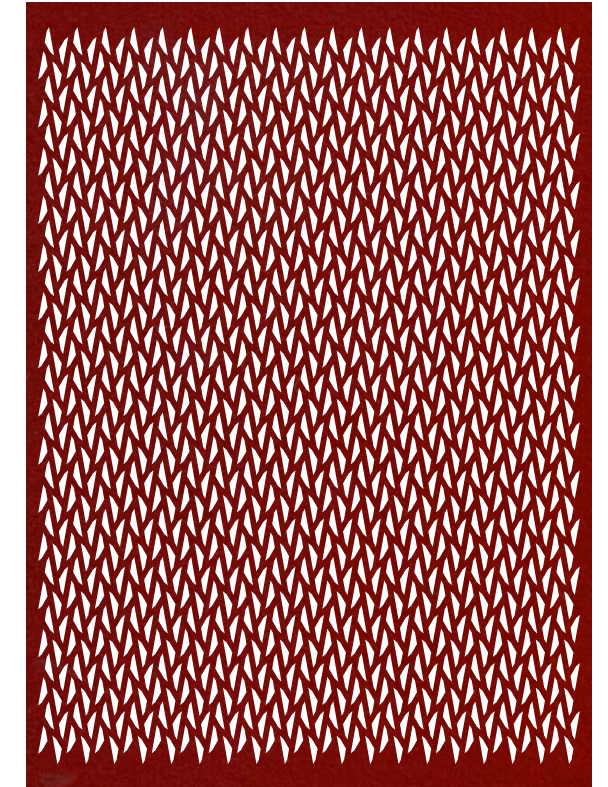
ARO Array 1



Small

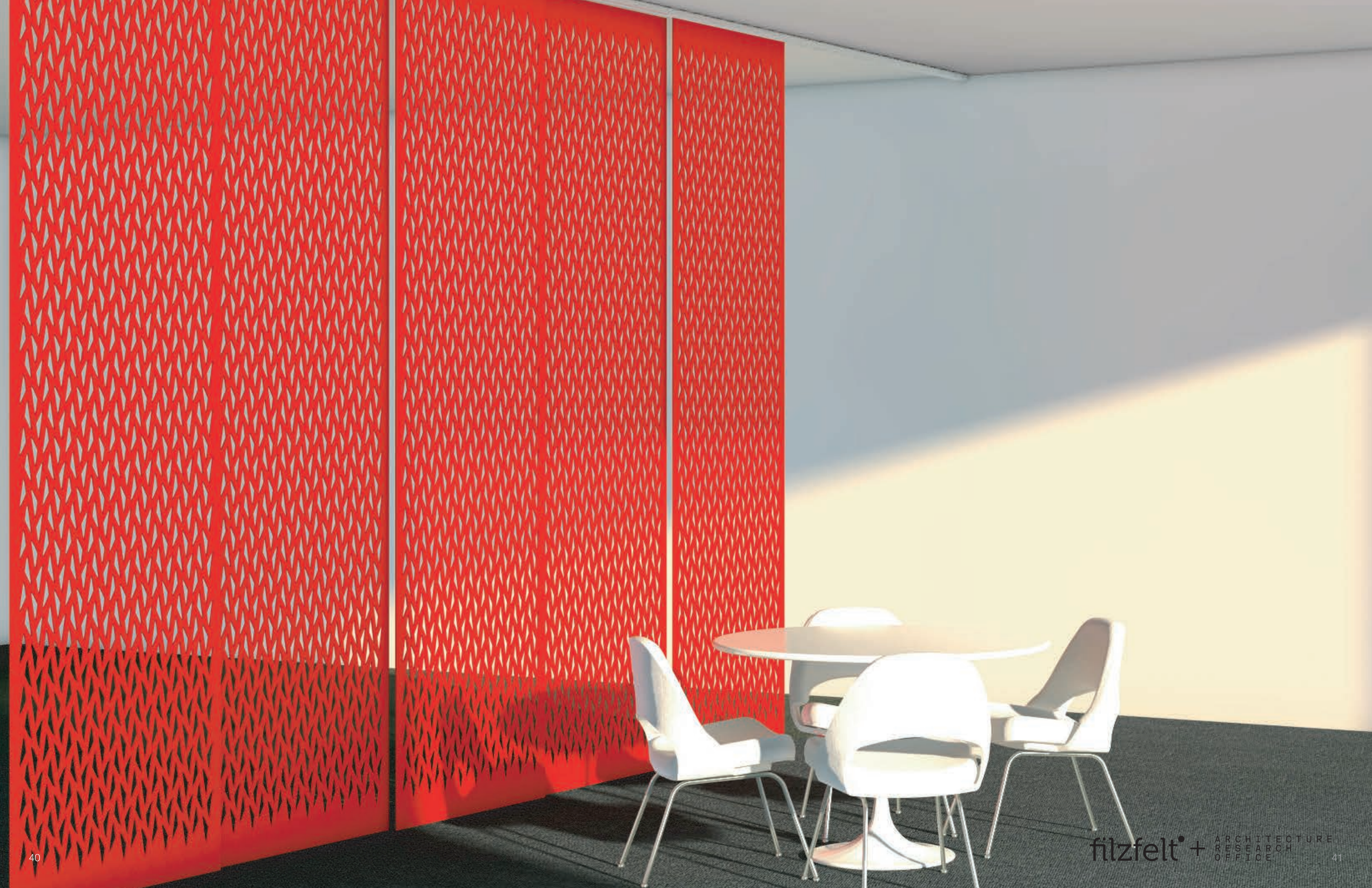


Medium

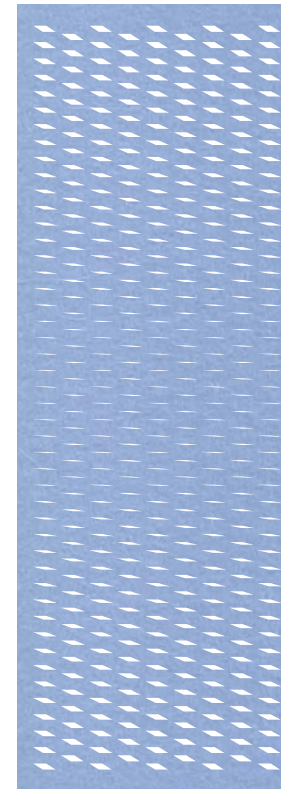


Large

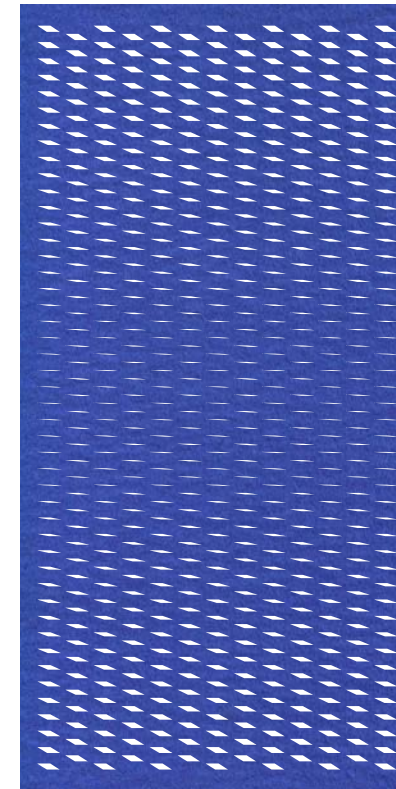
A relatively open screen, ARO Array 1 is made up of an organic leaf-like pattern. ARO Array hanging panels add texture, color, and modulated visibility to any space. ARO Array offers standard static and transforming patterns that can be used individually or in series. The panels define space, control light and view, and provide varied degrees of privacy.



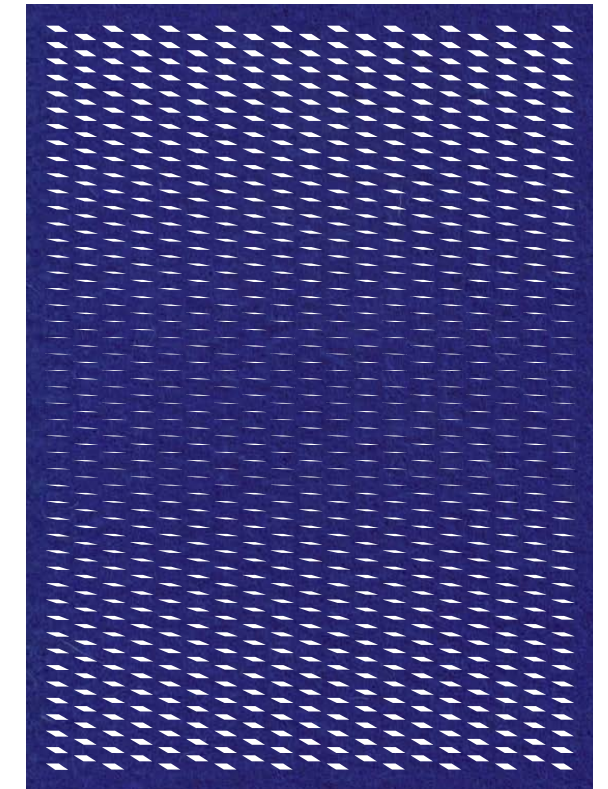
ARO Array 2



Small



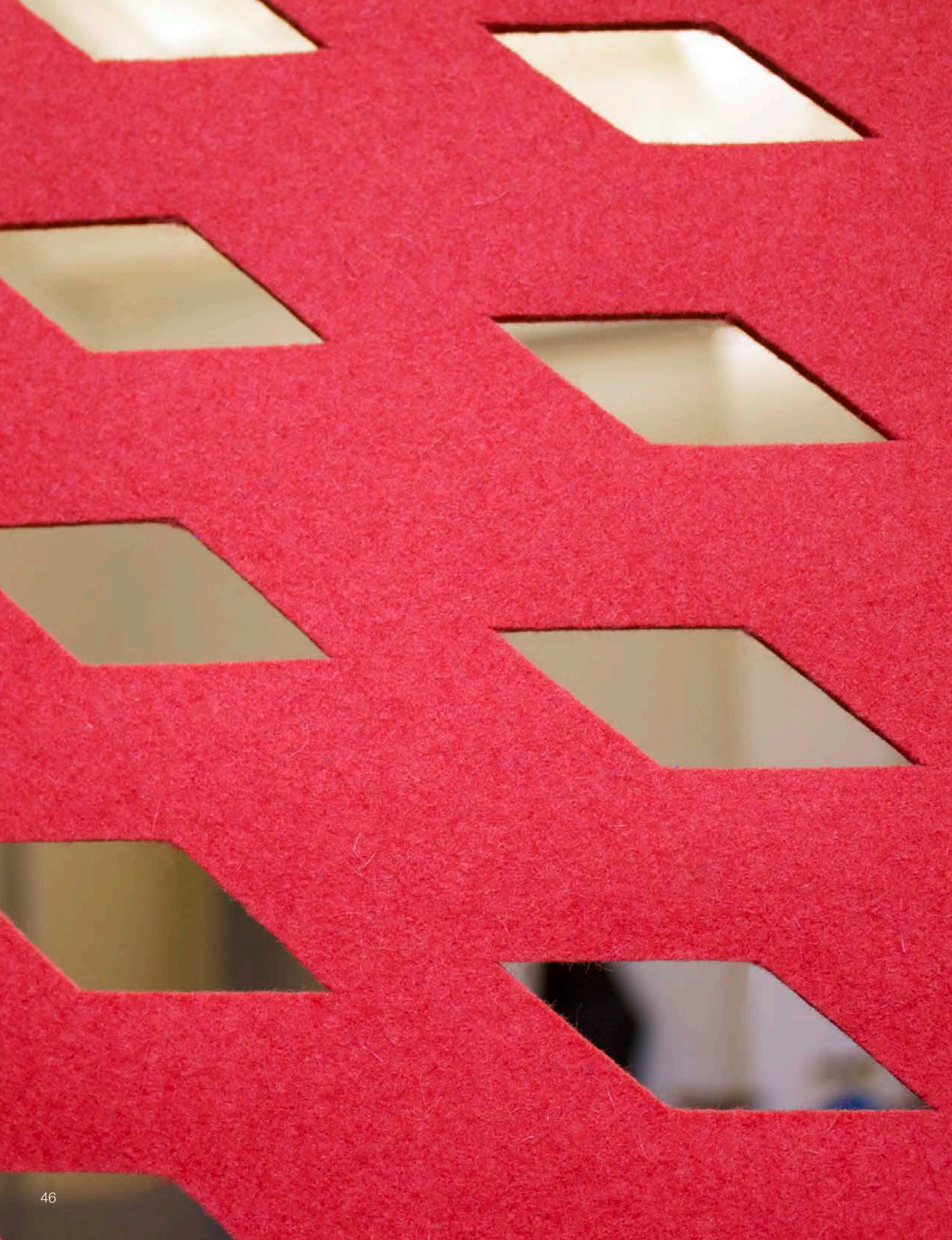
Medium



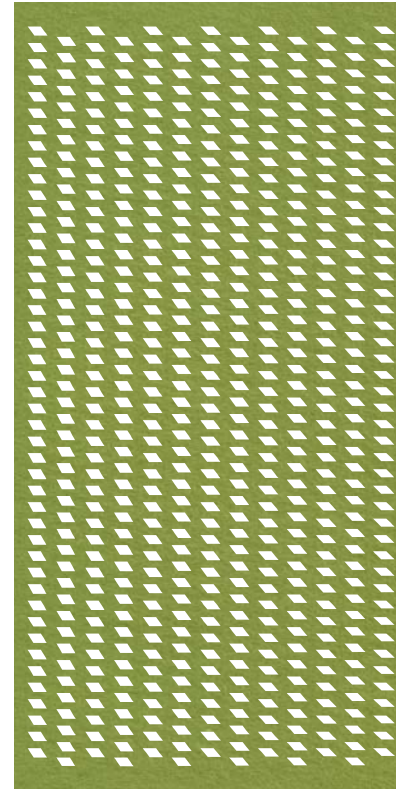
Large

Parallelograms transform from open to closed in ARO Array 2, providing visibility from a standing position and increased privacy from a seated position. ARO Array hanging panels add texture, color, and modulated visibility to any space. ARO Array offers standard static and transforming patterns that can be used individually or in series. The panels define space, control light and view, and provide varied degrees of privacy.

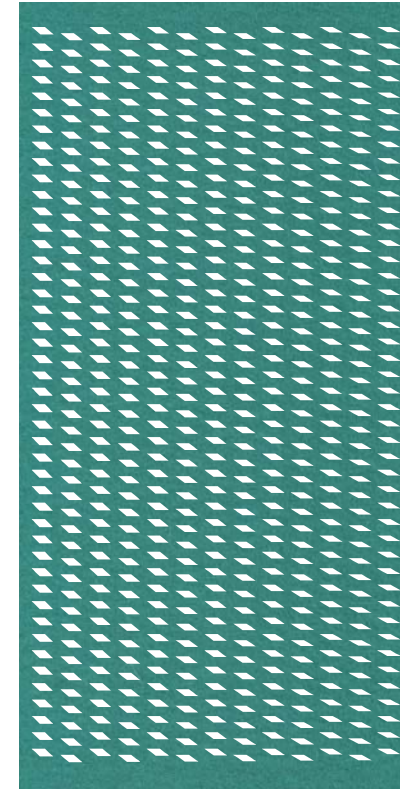




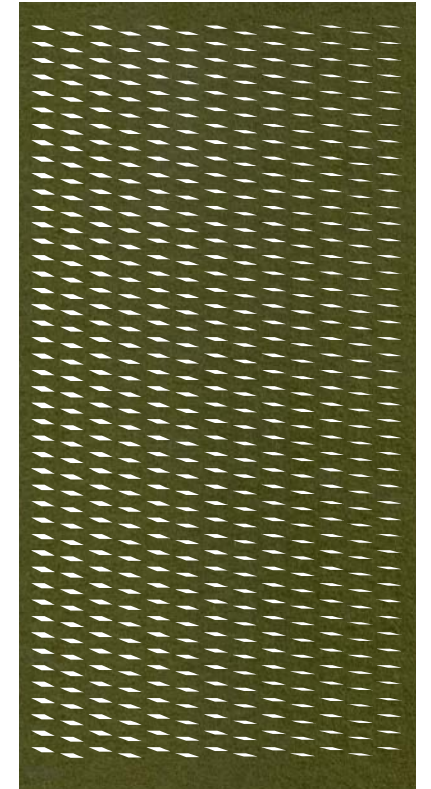
ARO Array 3



Medium 3.1

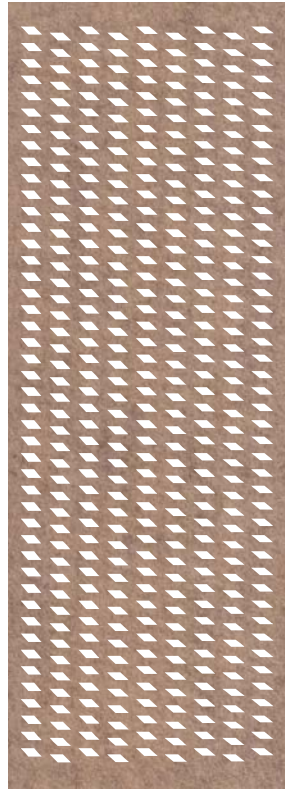


Medium 3.2

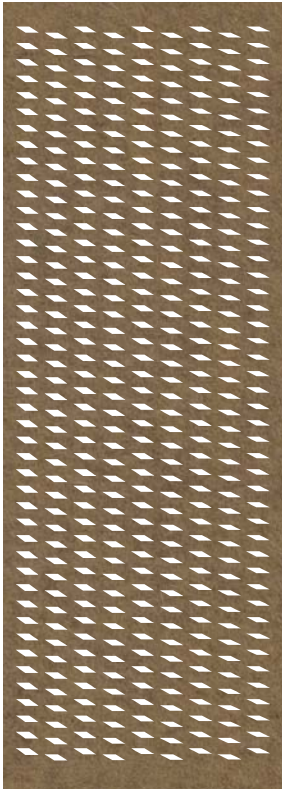


Medium 3.3

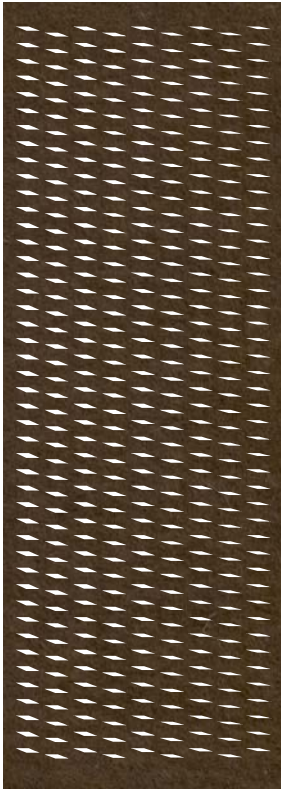
Sweeping movement across multiple panels is possible with ARO Array 3, which is created from horizontally transforming parallelograms. ARO Array hanging panels add texture, color, and modulated visibility to any space. ARO Array offers standard static and transforming patterns that can be used individually or in series. The panels define space, control light and view, and provide varied degrees of privacy.



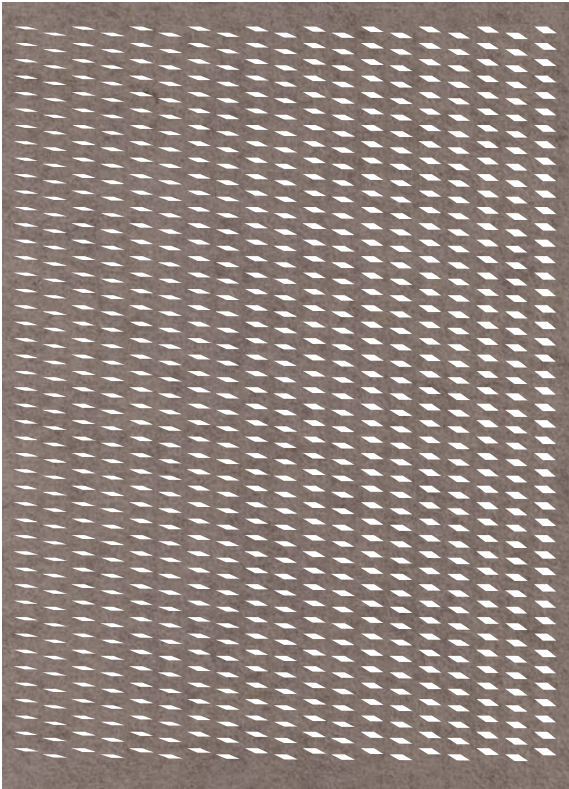
Small 3.1



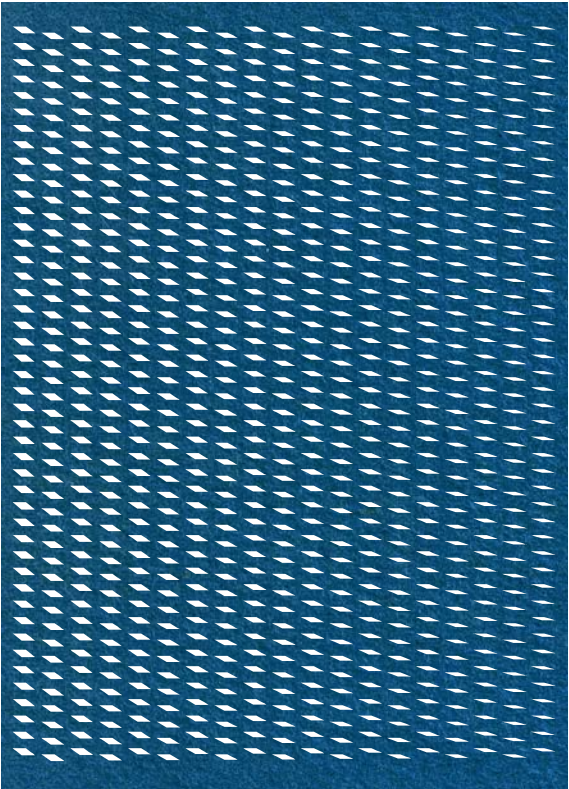
Small 3.2



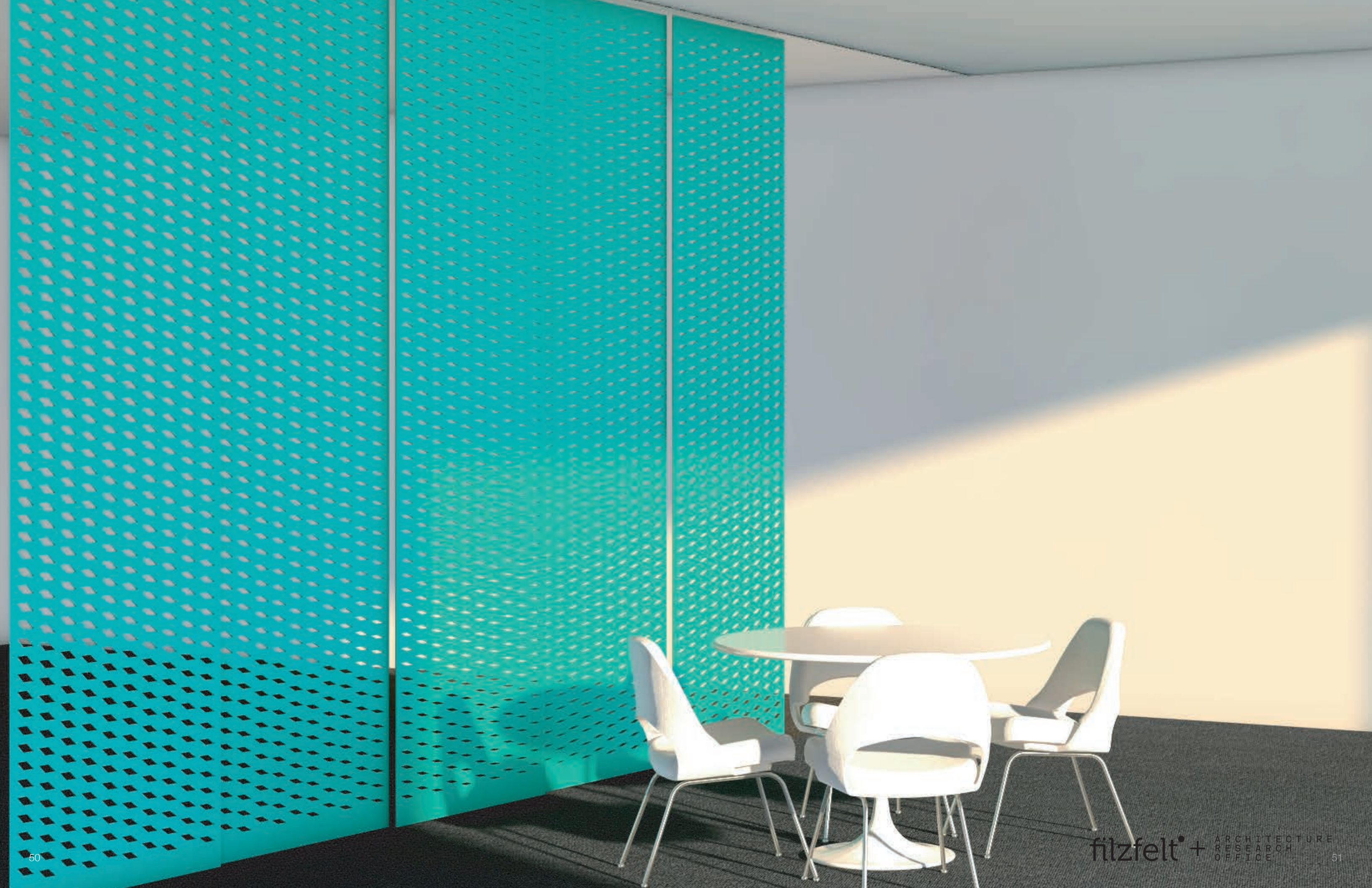
Small 3.3

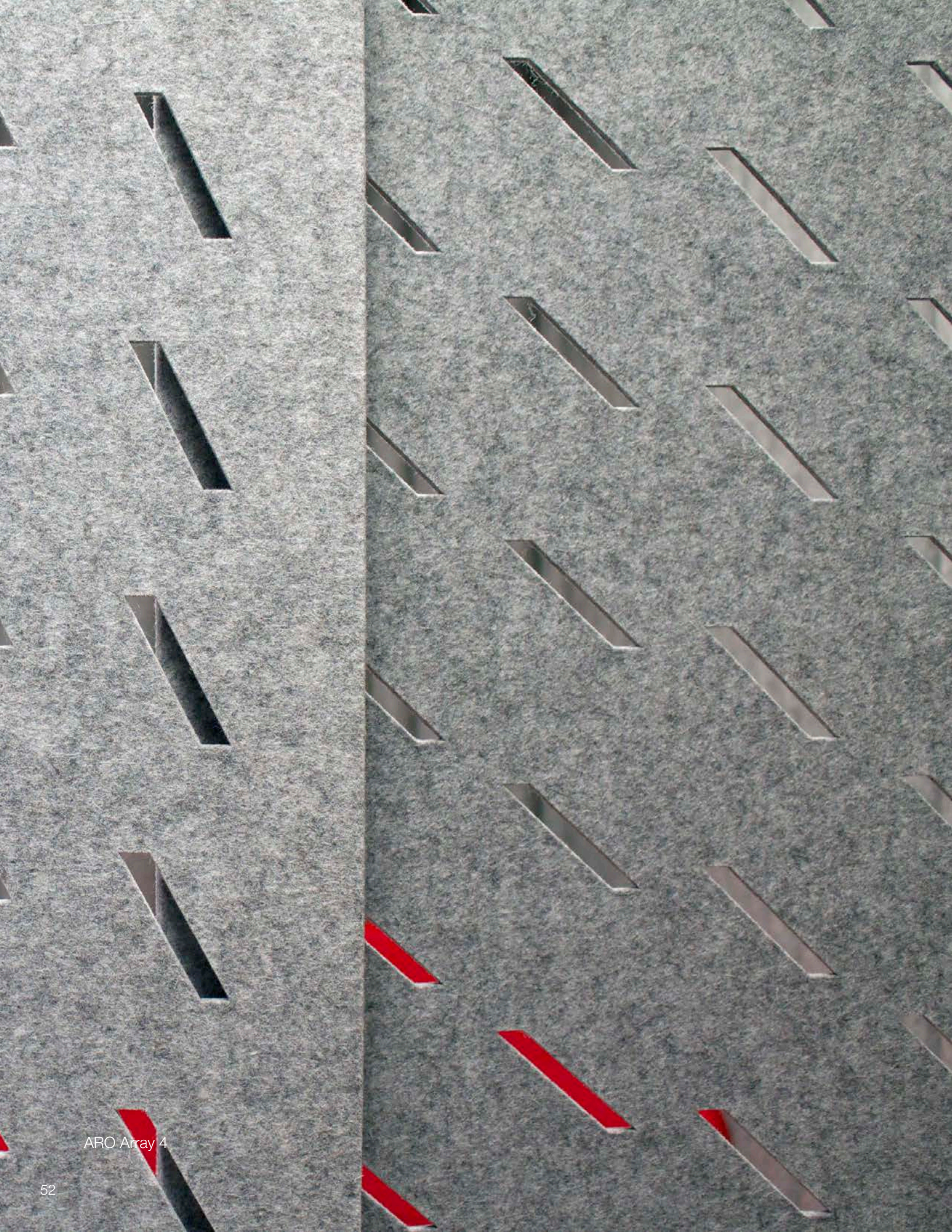


Large 3.1

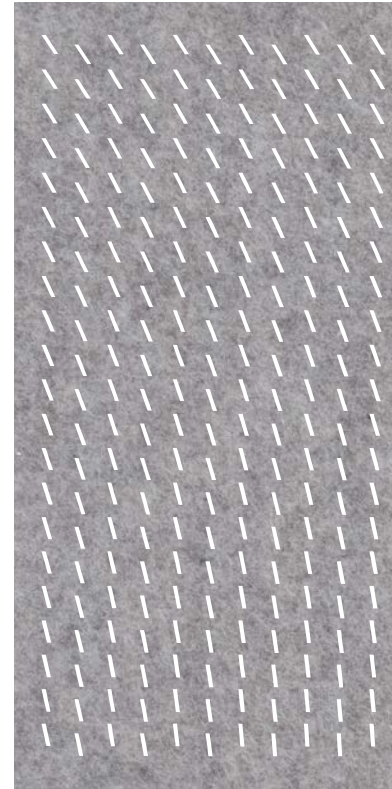


Large 3.2

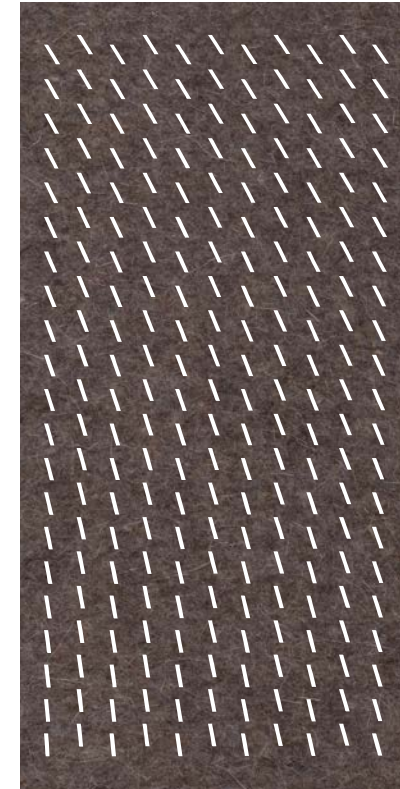




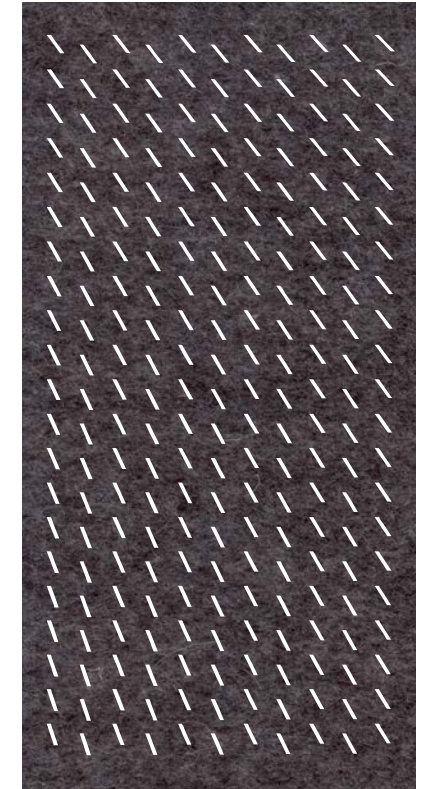
ARO Array 4



Medium 3.1

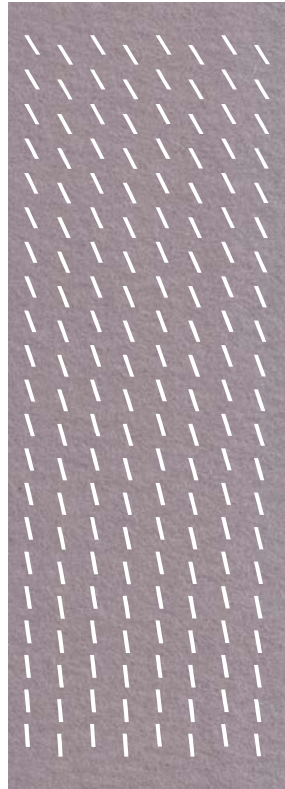


Medium 3.2

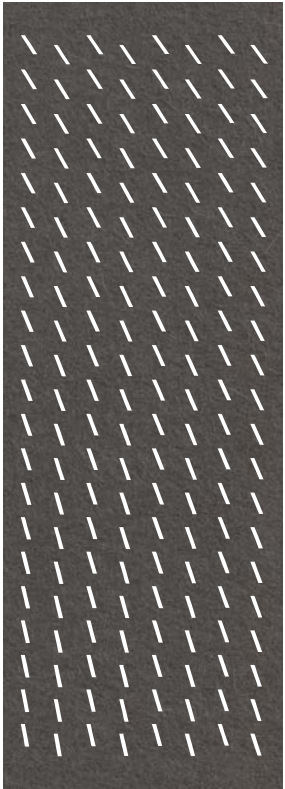


Medium 3.3

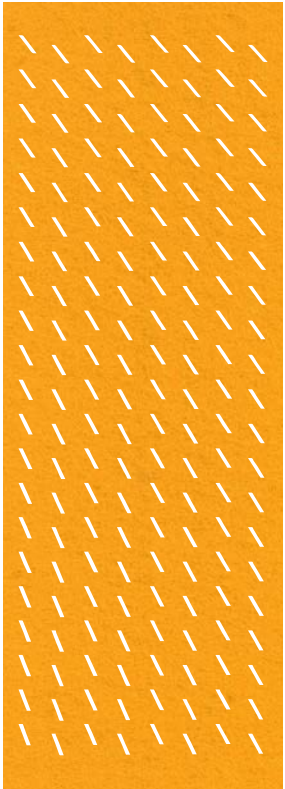
Subtly rotating lines evoke rain showers and provide visibility in ARO Array 4. ARO Array hanging panels add texture, color, and modulated visibility to any space. ARO Array offers standard static and transforming patterns that can be used individually or in series. The panels define space, control light and view, and provide varied degrees of privacy.



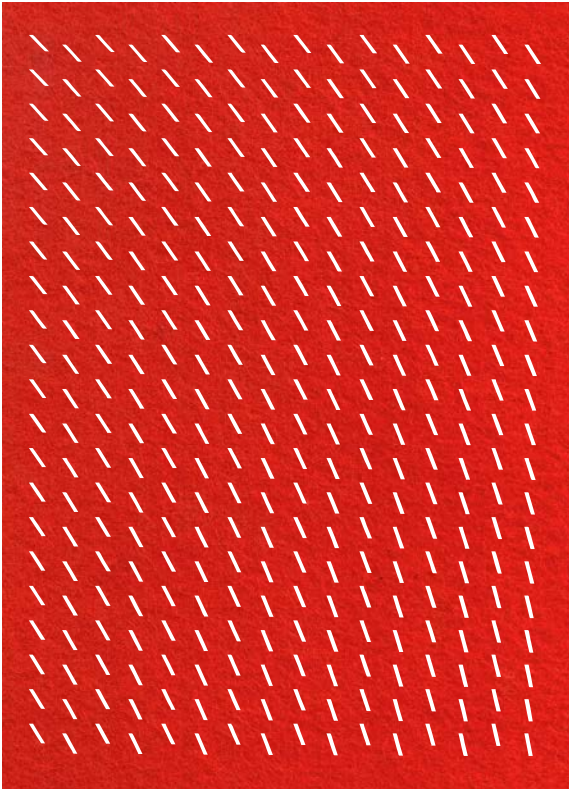
Small 3.1



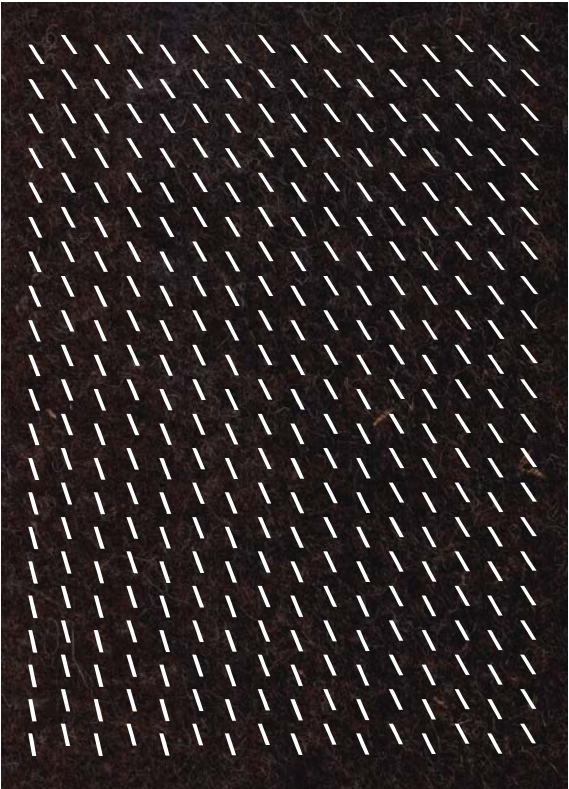
Small 3.2



Small 3.3



Large 3.1

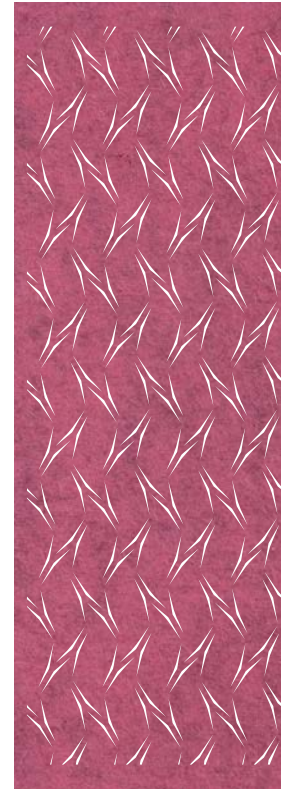


Large 3.2

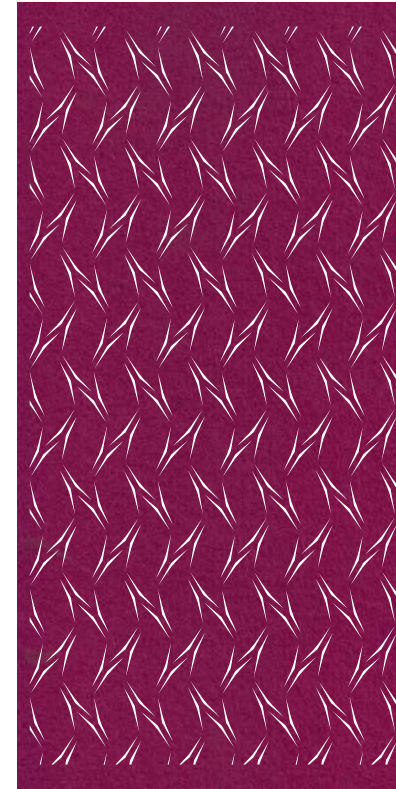




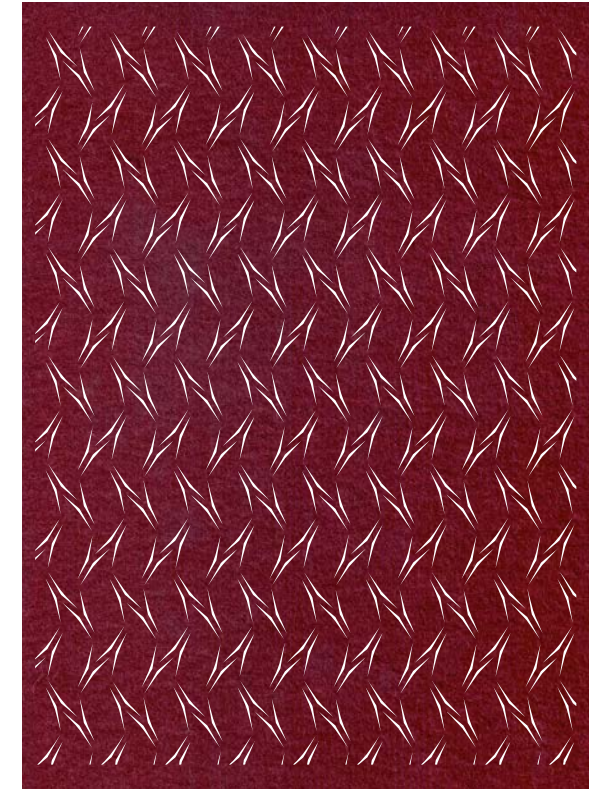
ARO Array 5



Small



Medium



Large

Slipping lines form an organic pattern in ARO Array 5, creating a lively visual effect with little transparency. ARO Array hanging panels add texture, color, and modulated visibility to any space. ARO Array offers standard static and transforming patterns that can be used individually or in series. The panels define space, control light and view, and provide varied degrees of privacy.



Standard Colors

For use with Plank, Shingle and Baffle Products



Standard Colors

For use with Array Products



