



ARO Plank 4



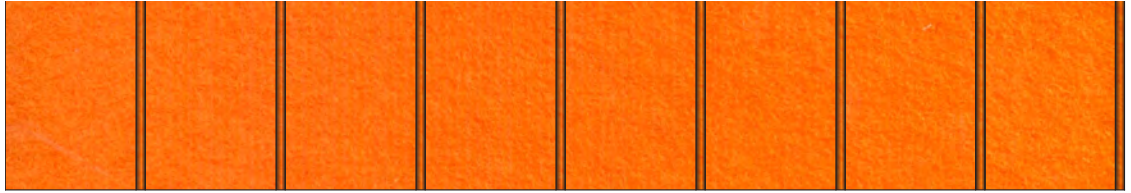
## ARO Plank 4



ARO Plank is a wall system composed of modular planks that assemble to create standard patterns, yielding a continuous, acoustically absorptive architectural finish. ARO Plank 4 has three distinct modules: Wide (A), Narrow (B), and Rib (C). Flat planks are accented by ribs, creating a striped, corrugated effect. Flat modules are composed of felt-covered acoustic substrate and are available in four standard configurations. The planks install quickly and easily with FilzFelt's Interlock Mounting System and are available in 63 colors of 3mm Wool Design Felt.

# Standard Configurations

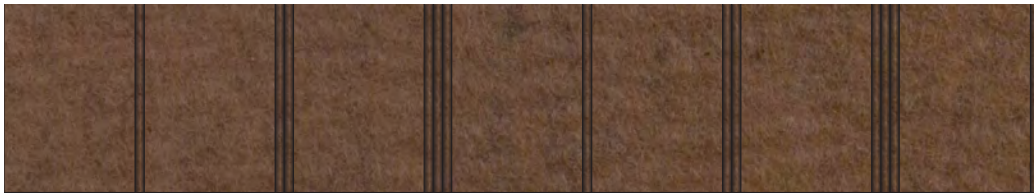
Plank 4.1



A C A C A C A C A C A C A C A C

Repeat: AC | Repeat Width: 1'-7 1/4" (48.9 cm)

Plank 4.2



A C A CC A CCC A C A CC A CCC A C

Repeat: ACACCACCC | Repeat Width: 5'-1 1/2" (156.2 cm)

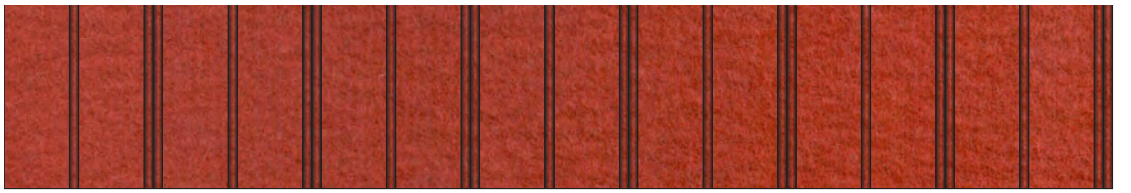
Plank 4.3



B C B C B C B C B C B C B C B C B C B C B C B C B C B C B C

Repeat: BC | Repeat Width: 10 1/4" (26 cm)

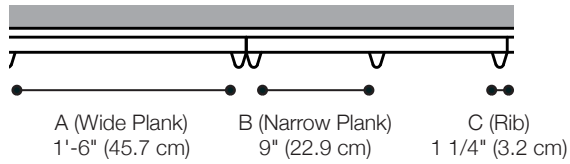
Plank 4.4



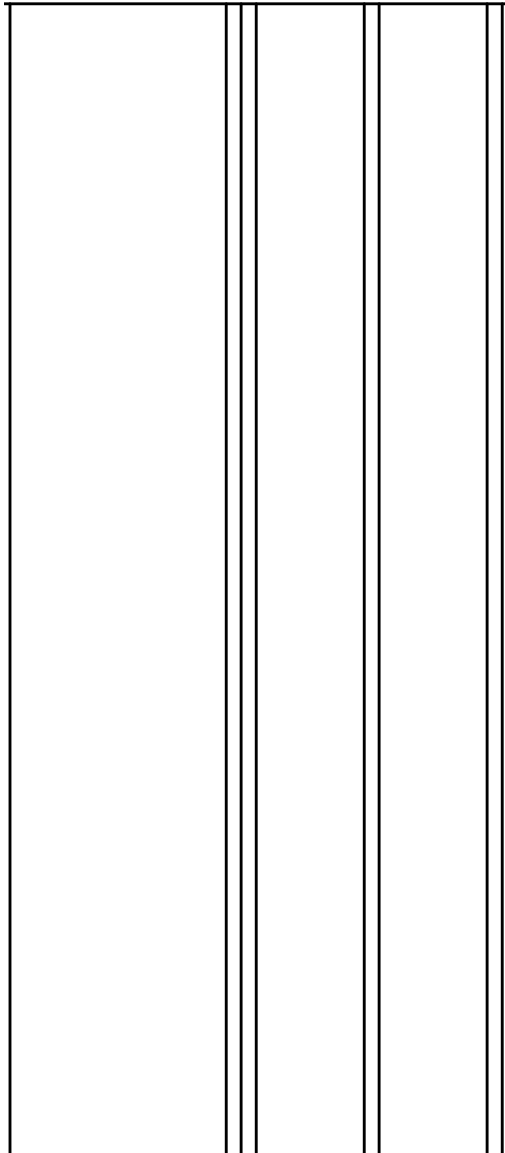
B C B CC B C B CC B C B CC B C B CC B C B CC B C B CC B C B CC

Repeat: BCBCCBCCC | Repeat Width: 2'-10 1/2" (87.6 cm)

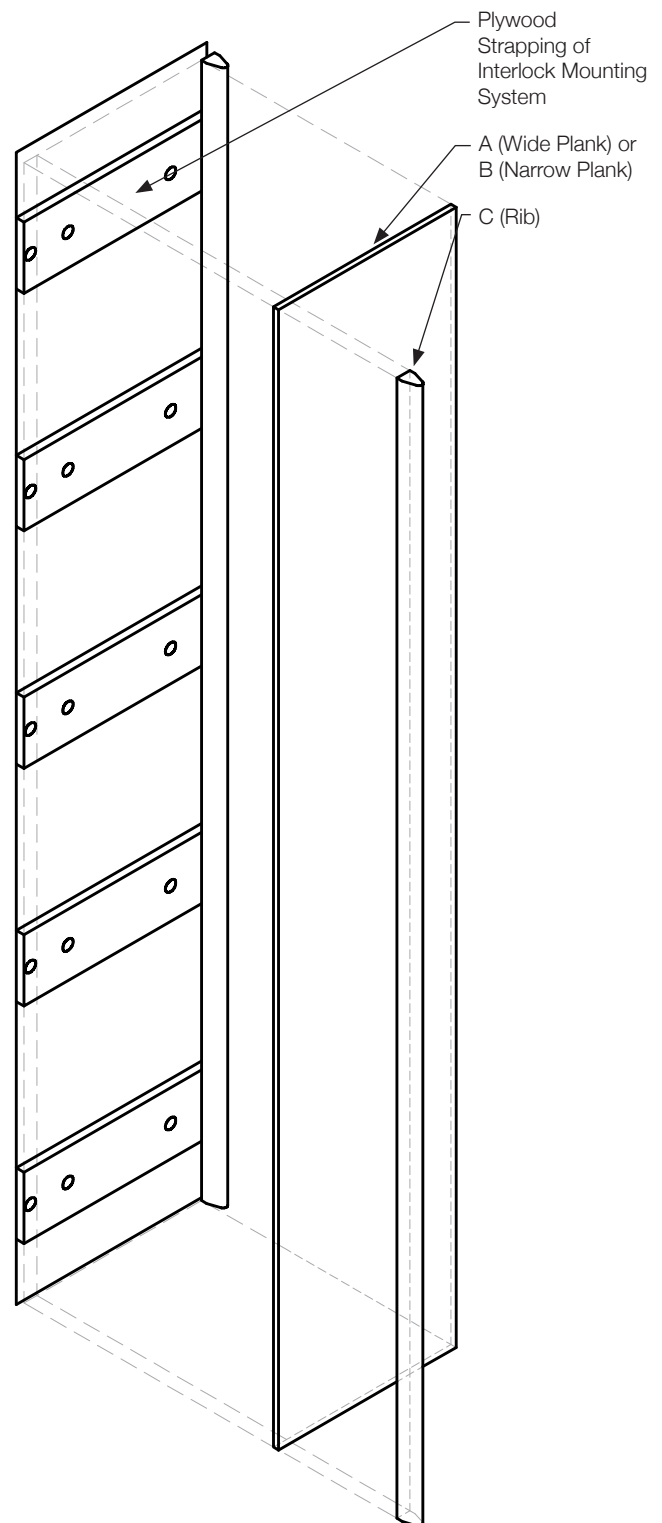
# Drawings



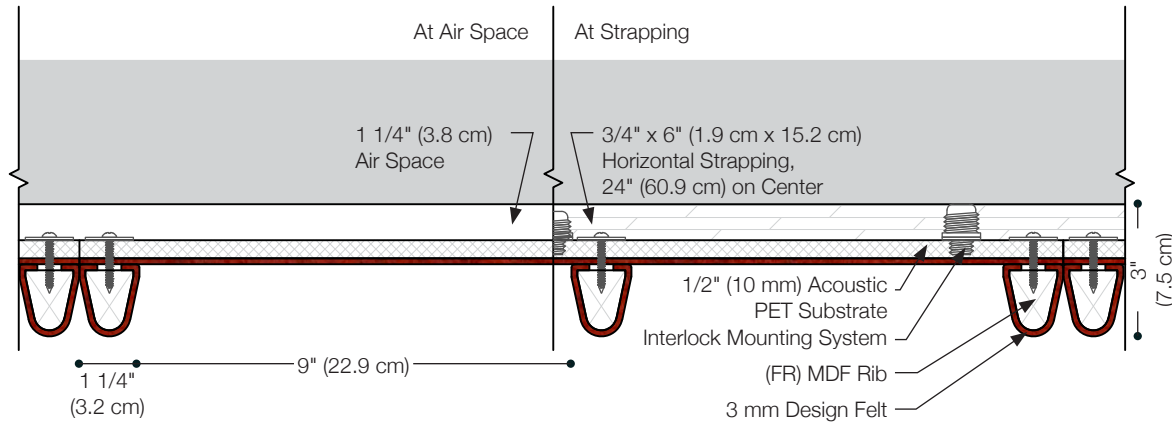
**1 Plan**  
Scale: 3/4" = 1'-0"



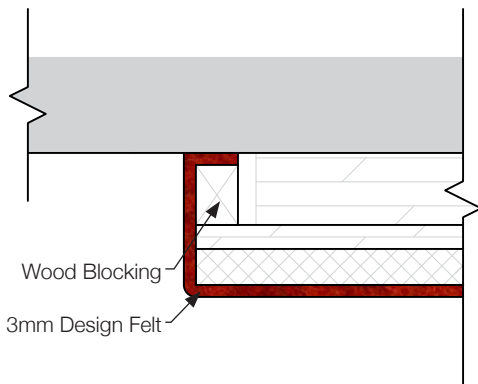
**2 Elevation**  
Scale: 3/4" = 1'-0"



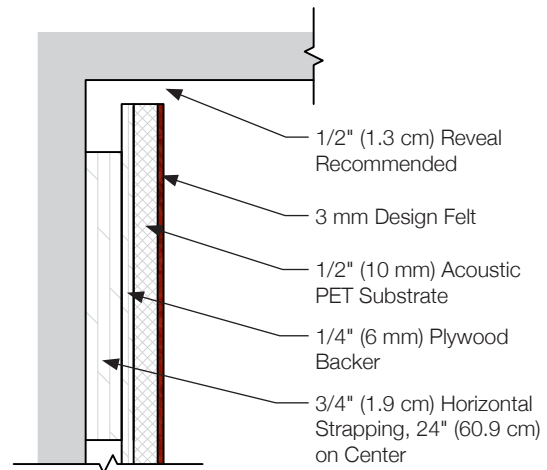
**3 Exploded Axonometric**  
Scale: 3/4" = 1'-0"



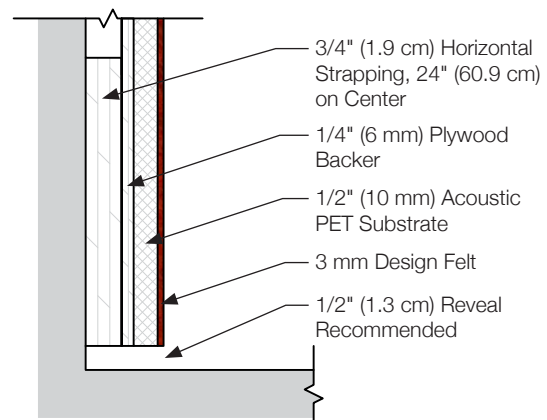
**4 Plan Detail of Assembly**  
Scale: 3" = 1'-0"



**5 Plan Detail at Trim**  
Scale: 6" = 1'-0"



**6 Section Detail at Head**  
Scale: 6" = 1'-0"



**7 Section Detail at Base**  
Scale: 6" = 1'-0"



# Specifications

<b>Name</b>	ARO Plank 3
<b>Designer</b>	Architecture Research Office
<b>Content</b>	100% Wool Design Felt + Acoustic Substrate (100% Virgin PET) + (FR) MDF
<b>Felt Thickness</b>	3 mm (1/8 in)
<b>Standard Configurations</b>	Plank 4.1, Plank 4.2, Plank 4.3, Plank 4.4
<b>Plank Widths</b>	A (Wide Plank): 1'-6" (45.7 cm) B (Narrow Plank): 9" (22.9 cm) C (Rib): 1 1/4" (3.2 cm)
<b>Repeat</b>	Plank 4.1: AC Plank 4.2: ACACCACCC Plank 4.3: BC Plank 4.4: BCBCCBCCC
<b>Repeat Width</b>	Plank 4.1: 1'-7 1/4" (48.9 cm) Plank 4.2: 5'-1 1/2" (156.2 cm) Plank 4.3: 10 1/4" (26 cm) Plank 4.4: 2'-10 1/2" (87.6 cm)
<b>Maximum Standard Plank Length</b>	9'-0" (2.74 cm)
<b>Maintenance</b>	Vacuum occasionally to remove general air-borne debris. Should soiling occur, clean with a mild, water-free dry cleaning solvent.
<b>Durability</b>	Contract or residential
<b>Lead Time</b>	ARO Plank is made to order and certain lead times will apply.
<b>Installation</b>	Installs with Interlock Mounting System provided
<b>Custom</b>	Custom configurations are available and heights beyond 9'-0" (2.74 m) must be quoted.
<b>Acoustics</b>	ASTM C 423: NRC – 0.65, SAA: 0.61
<b>Colorfastness to Light</b>	Class 4-5 (40 hours)
<b>Colorfastness to Crocking</b>	Class 3-4 (wet), Class 4-5 (dry)
<b>Flammability</b>	ASTM E 84 Class A

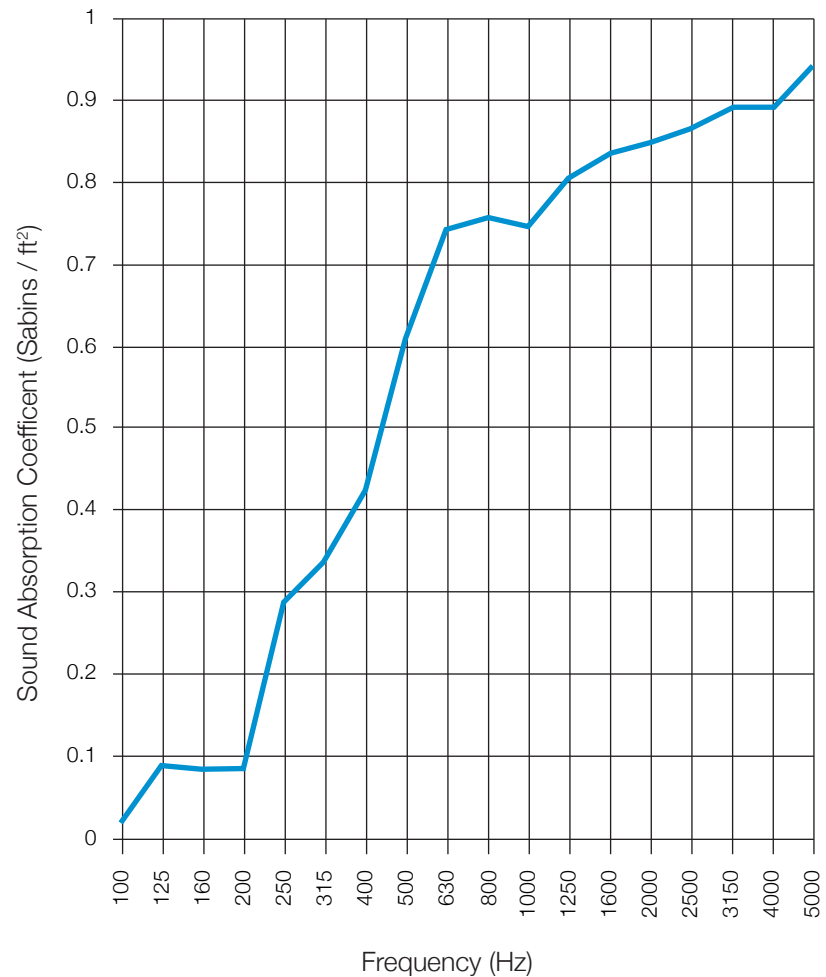
## Standard Colors



## Sound Absorption Results

Frequency (Hz)	Sound Absorption Coefficient (Sabins / ft <sup>2</sup> )
100	0.02
125	0.09
160	0.08
200	0.08
250	0.29
315	0.33
400	0.42
500	0.61
630	0.74
800	0.76
1000	0.75
1250	0.80
1600	0.84
2000	0.85
2500	0.86
3150	0.89
4000	0.89
5000	0.94

SAA = 0.61  
NRC = 0.65



### Test Report ARO Plank 4

For ARO Plank 4, the test report quotes the frequency dependent sound absorption data as well as the single number ratings. Data taken from Test Report RAL™-A14-154 conducted by Riverbank Acoustical Laboratories. Complete test results are available upon request.