

filzfelt •

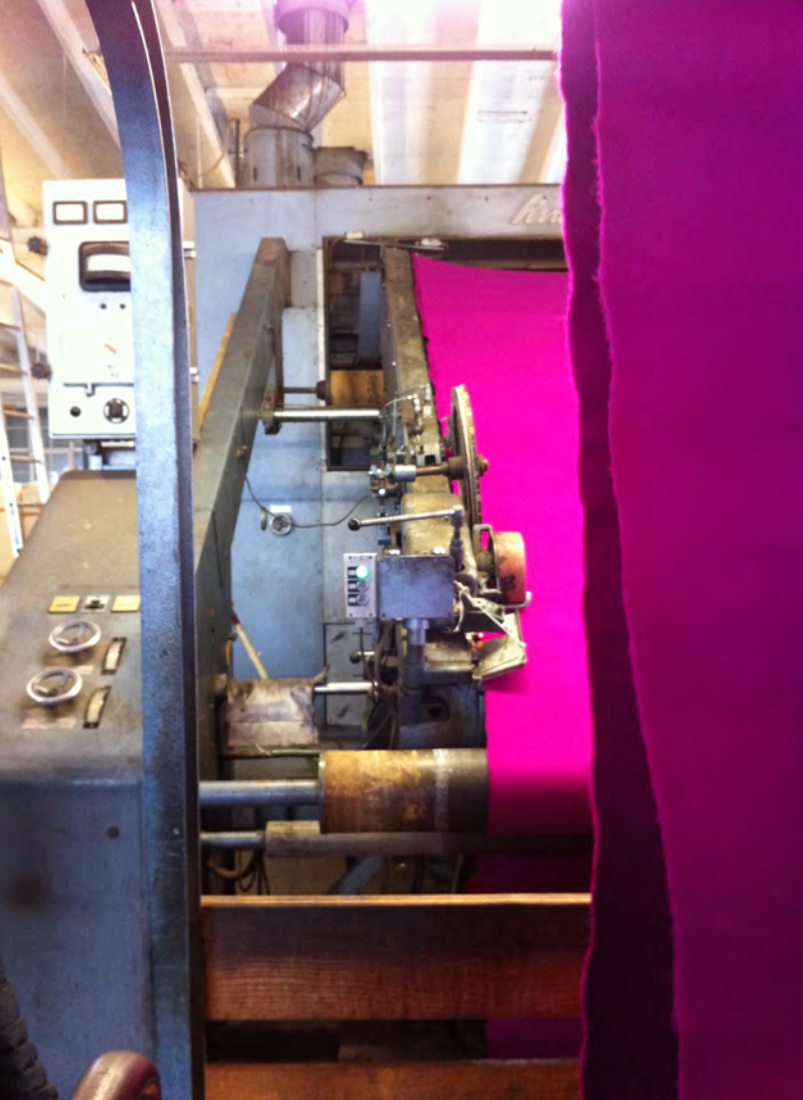
Ayşe Bırsel Collection

Contents

Design the life you love.

ayse

| | |
|----------------|----|
| Introduction | 4 |
| Hanging Panels | 14 |
| Drapery | 34 |
| Floor Mats | 42 |
| Tabletop | 66 |
| Collection | 76 |



About FilzFelt

We sell felt.

FilzFelt carries German-milled 100% Wool Design Felt and felt products that include acoustic products, drapery, floor coverings, hanging panels and wall panels plus provides full custom fabrication services.

Wool felt is one of the oldest man-made textiles. As felt is a non-woven fabric and does not require a loom for its production, ancient people were able to produce it quite easily. To produce felt, raw wool undergoes a wet “felting” process, which involves matting, condensing and pressing the fibers. Design Felt is high quality, eco-friendly (wool content!), comes in highly saturated colors, and is perfect for demanding design applications.

Go Sheep!

Sheep’s wool is highly regarded for its crimped, elastic fibers that are easily felted to form a fabric that cannot be pulled apart. This translates into durability, excellent dye ability, resistance to flame and compression, and thermal and sound insulation. Plus, this natural fiber is a rapidly renewable resource (it grows back!) and is completely biodegradable.



Ayse Birsal with prototypes from the collection

About Ayse Birsal

Ayse Birsal thinks differently.

Simplicity, human-centeredness, and pragmatism are central to this Turkish-born designer's methodology. Her process, termed Deconstruction:Reconstruction™, breaks down old paradigms, shifts points of view to a different perspective, and reconstructs by creating new values within existing constraints. Building on this process, her Design the Life You Love™ project examines the user's experience at a much broader scope—life.

Ayse's work is included in the permanent collections of the Museum of Modern Art and the Cooper-Hewitt National Design Museum, and she has received numerous awards including the IDEA Gold and ID Magazine Excellence Awards. She is also the recipient of the 2001 Young Designer Award from the Brooklyn Museum of Art and the 2008 Rhode Island School of Design's Athena Award in Furniture Design.

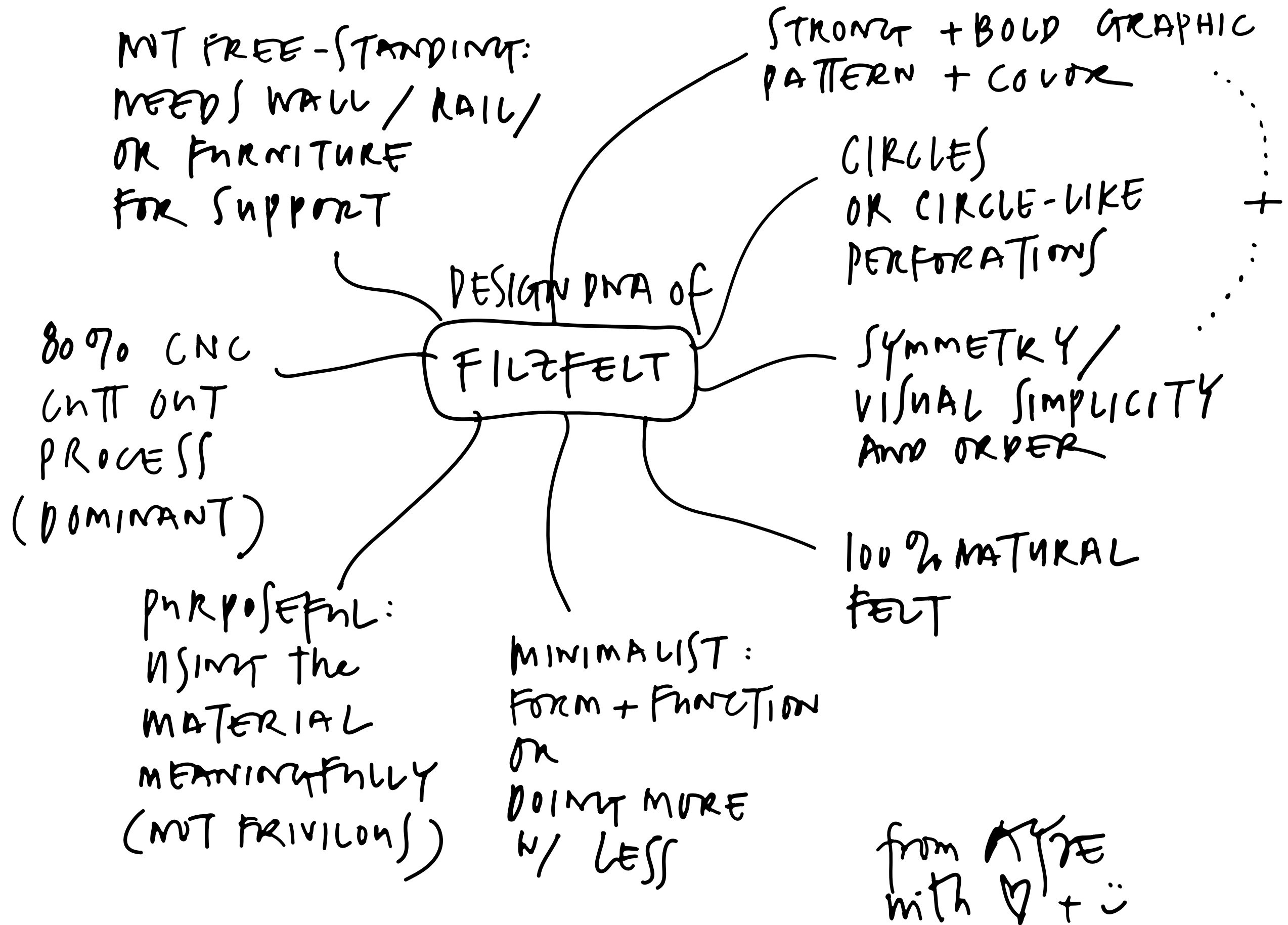
The Ayse Birsal Collection for FilzFelt

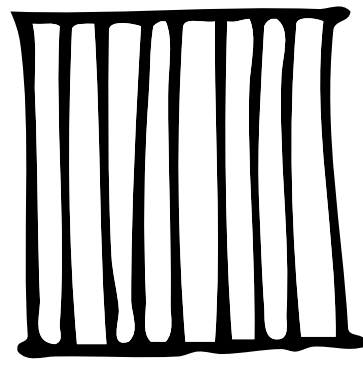
The Ayse Birsal Collection for FilzFelt is a series of ready-made goods that complement FilzFelt's existing product line. Ayse deconstructed FilzFelt's design DNA, which she described as 'purposeful, minimalist, symmetrical, natural, graphic, and scalable,' and into this framework, the Turkish-born designer blended a contemporary aesthetic with traditional influences from her homeland. The result is a distinctive and whimsical collection of wool felt products for the home and office.

Inspired by the minimal fabrication techniques possible with this non-woven textile, Ayse has developed playful designs derived from circles and rectangles. The simple repetition and scaling of these shapes create intricate patterning rendered solely in the physical form of each product. The Polka and Stamp Series showcase the drama that can be achieved with repetition while the Fringe and Doily Series experiment with scale.

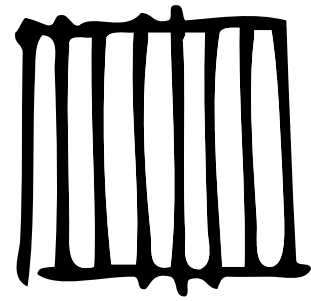
With user-focused design being a tenet of Ayse's process, the collection concentrates on meeting an increasing need for adaptable, multi-functional spaces within workplaces and homes while introducing bursts of color and pattern. These interchangeable and complementary products—floor coverings, drapery, hanging panels, and tabletop accessories—add flexibility while softening spaces physically and acoustically, and the bold patterning translates across multiple product categories for a wide range of mix and match options.

But most importantly, the Ayse Birsal Collection for FilzFelt is designed to be loved.

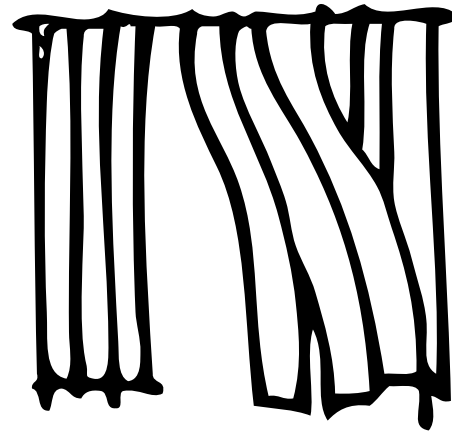




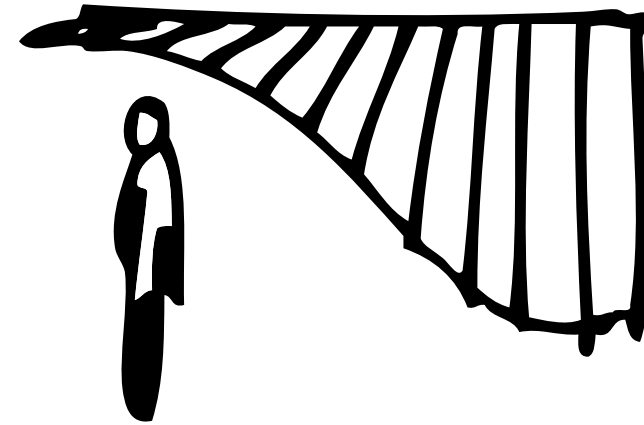
FIXED
WALL



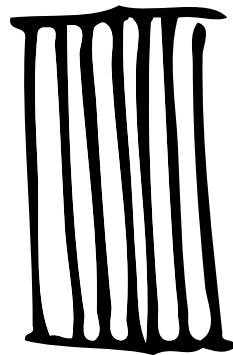
SCREEN
~



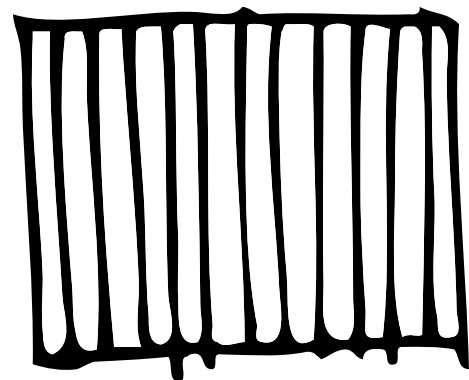
CURTAIN/
DTR



S SCREEN



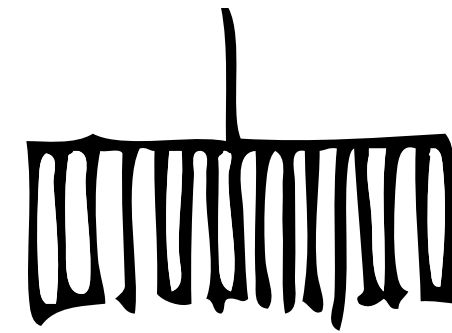
THROW



RUG



RUNNER



LIGHT



Hanging Panels

The colorful hanging panels in the Ayse Birsel Collection meet the increasing need for adaptability in workplaces by quickly and easily dividing space. Installed with our sliding track system, these flexible screens can be extended to afford acoustic and visual privacy or slide aside to create an open workspace.

Wool felt is the ideal choice for hanging panels due to its softness and texture combined with a thickness and density that allow the panels to hang freely without a backing or additional support. In addition, Ayse's designs take advantage of this non-woven textile's natural ability to be cut with intricate patterns without the need for edge finishing. This provides an unfettered and modern screening system fabricated simply by cutting away material that cannot be achieved with any other natural material.

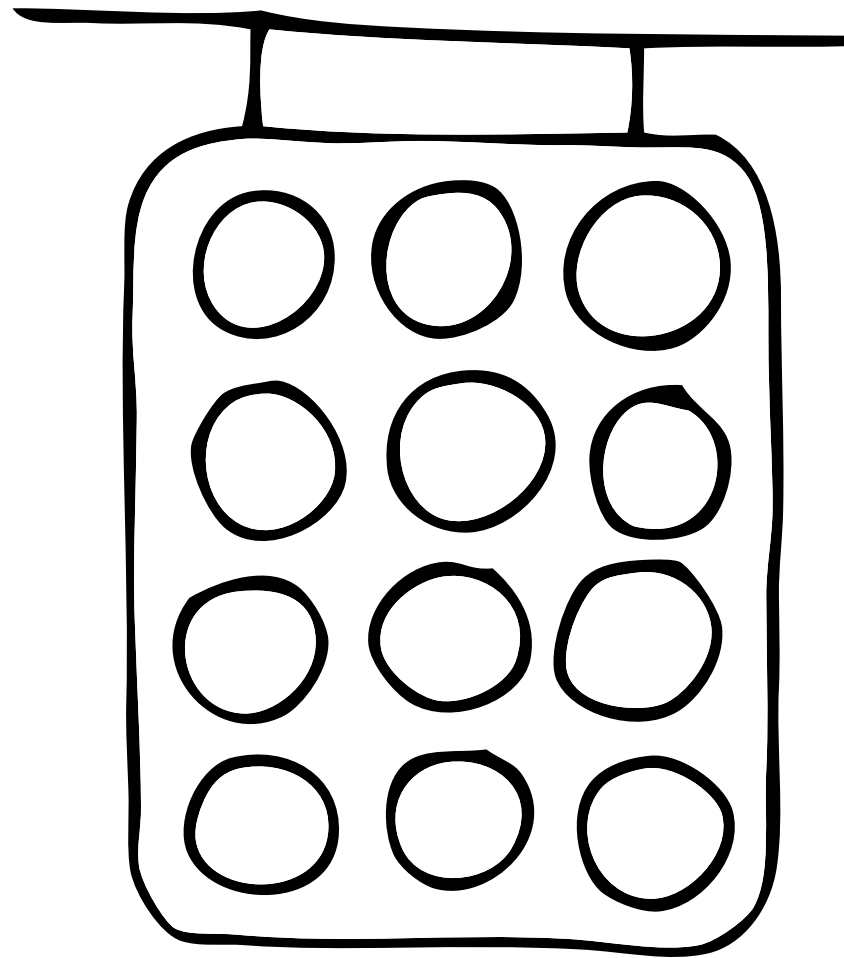
The Ayse Birsel Collection features four hanging panel designs that coordinate with FilzFelt's standard large panel size. The Polka Series experiments with several scales of circles cut-outs while the design of Fringe is modern and interactive and incorporates multiple hanging strips of felt.

Fringe Hanging Panel

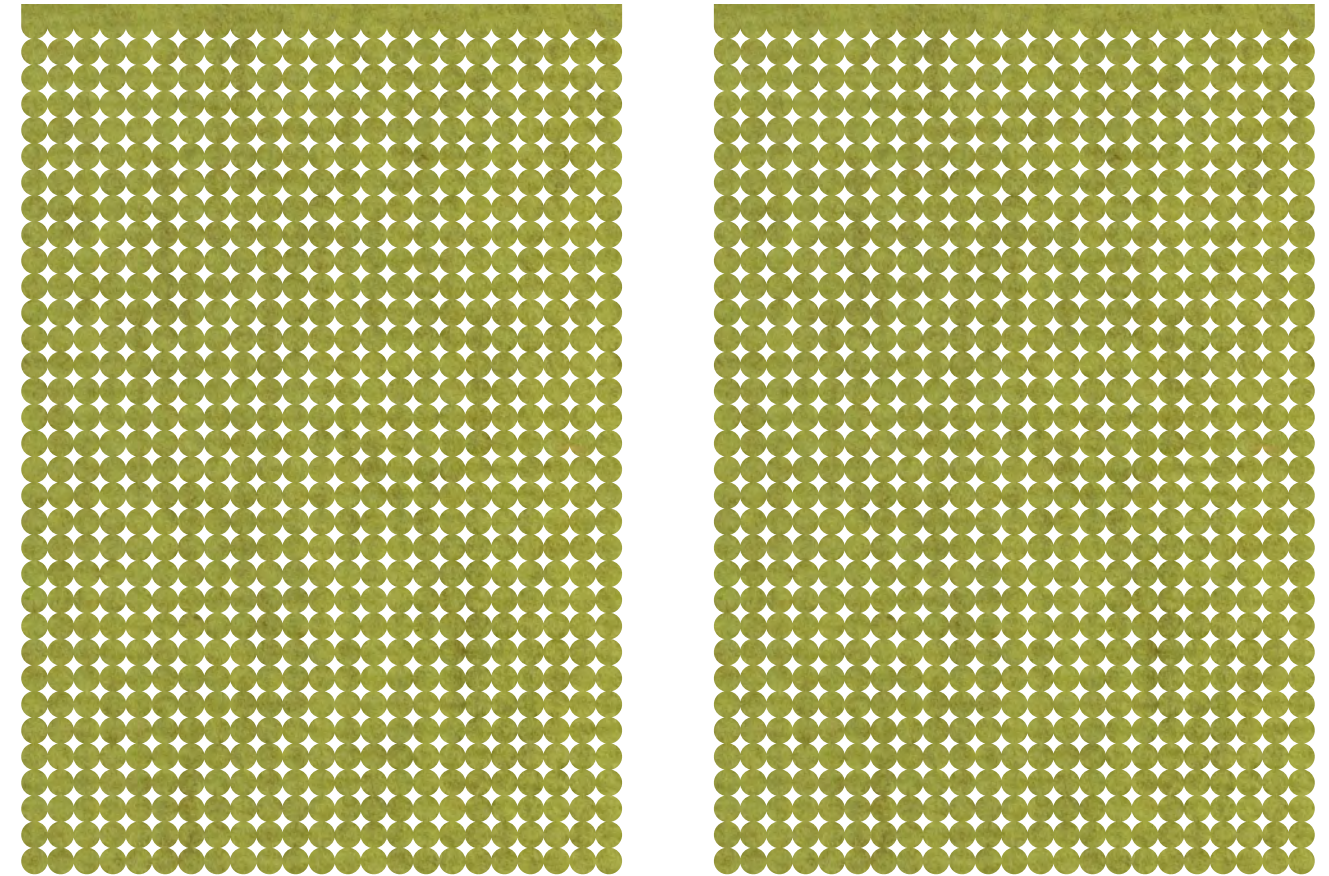


Polka 90 Hanging Panels

Hanging Panel: Polka 90



Concept sketch of Polka Hanging Panels



Standard Size
5'-7 3/4" x 8'-2"

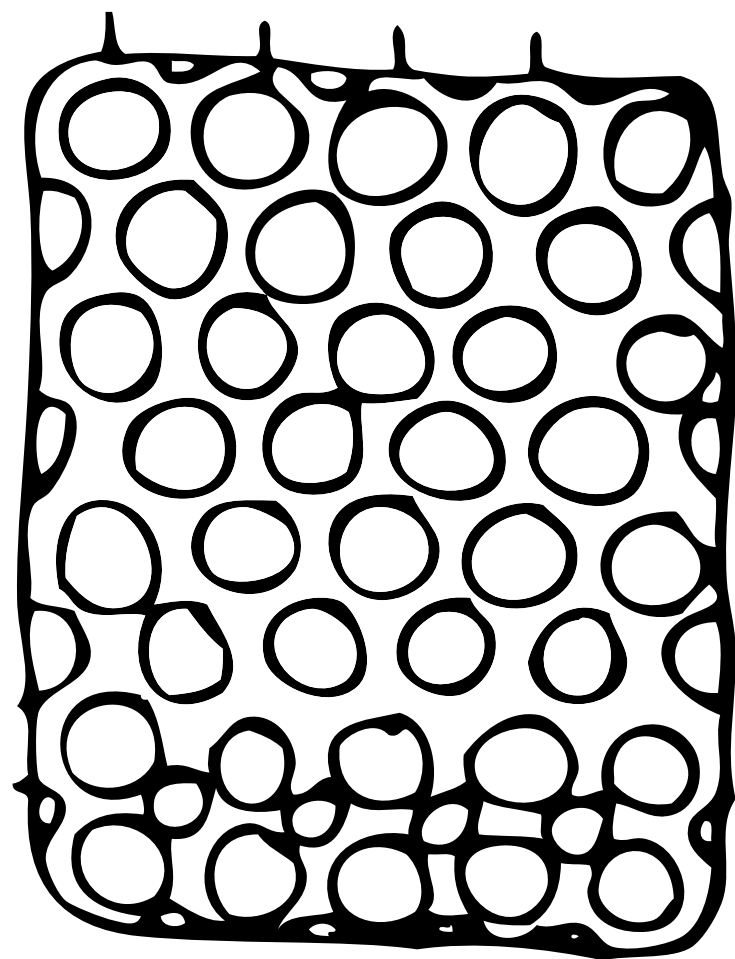
The Polka 90 Hanging Panel highlights the small scale circle. The play of addition + subtraction and positive + negative creates a simple, yet powerful pattern. This design is comprised of a grid of three inch diameter circles aligned on axis vertically and horizontally.

Available in one standard size and 43 colors of 5mm Wool Design Felt. Custom sizes are available upon request and panels may be installed with a sliding track system available through FilzFelt.

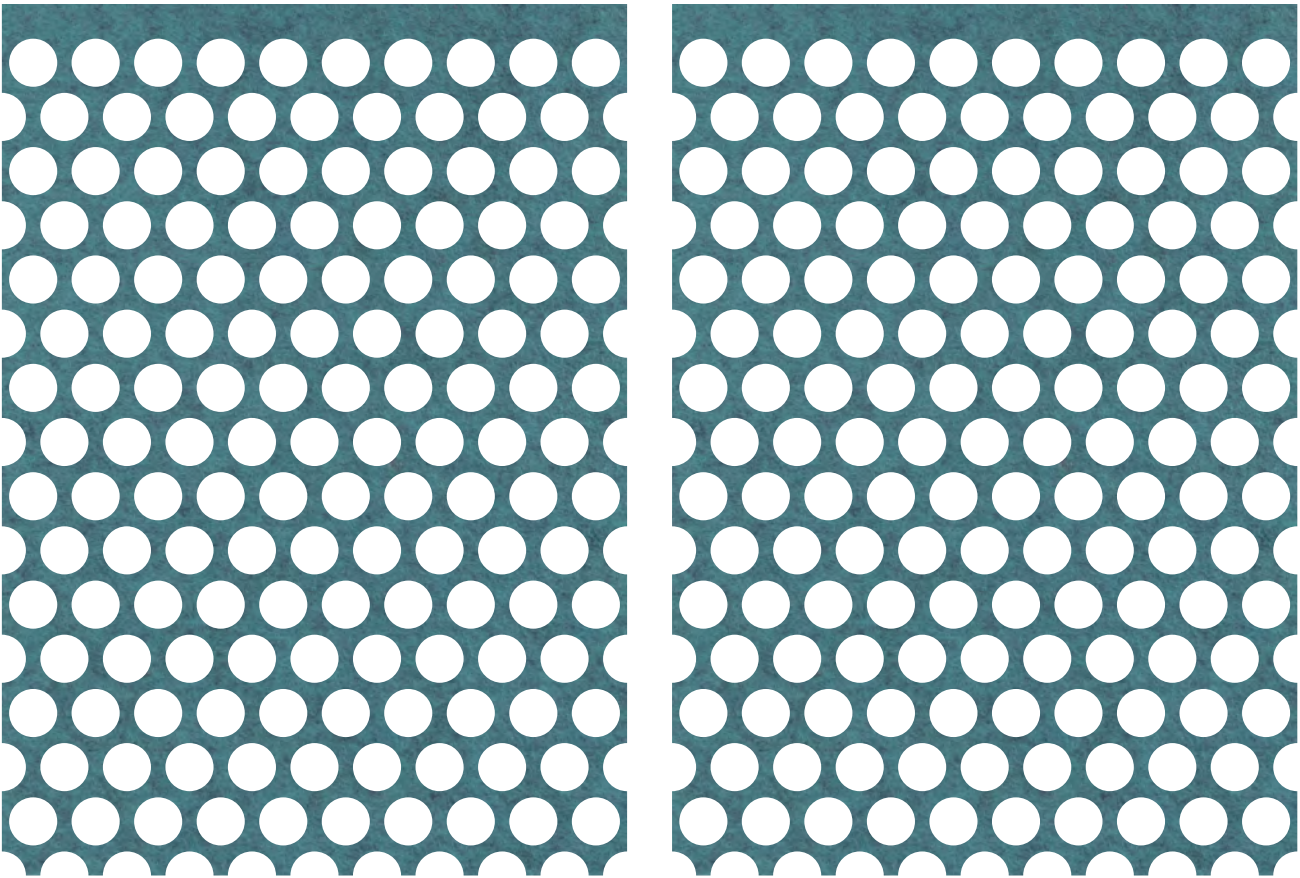


Polka 120 Hanging Panel

Hanging Panel: Polka 120



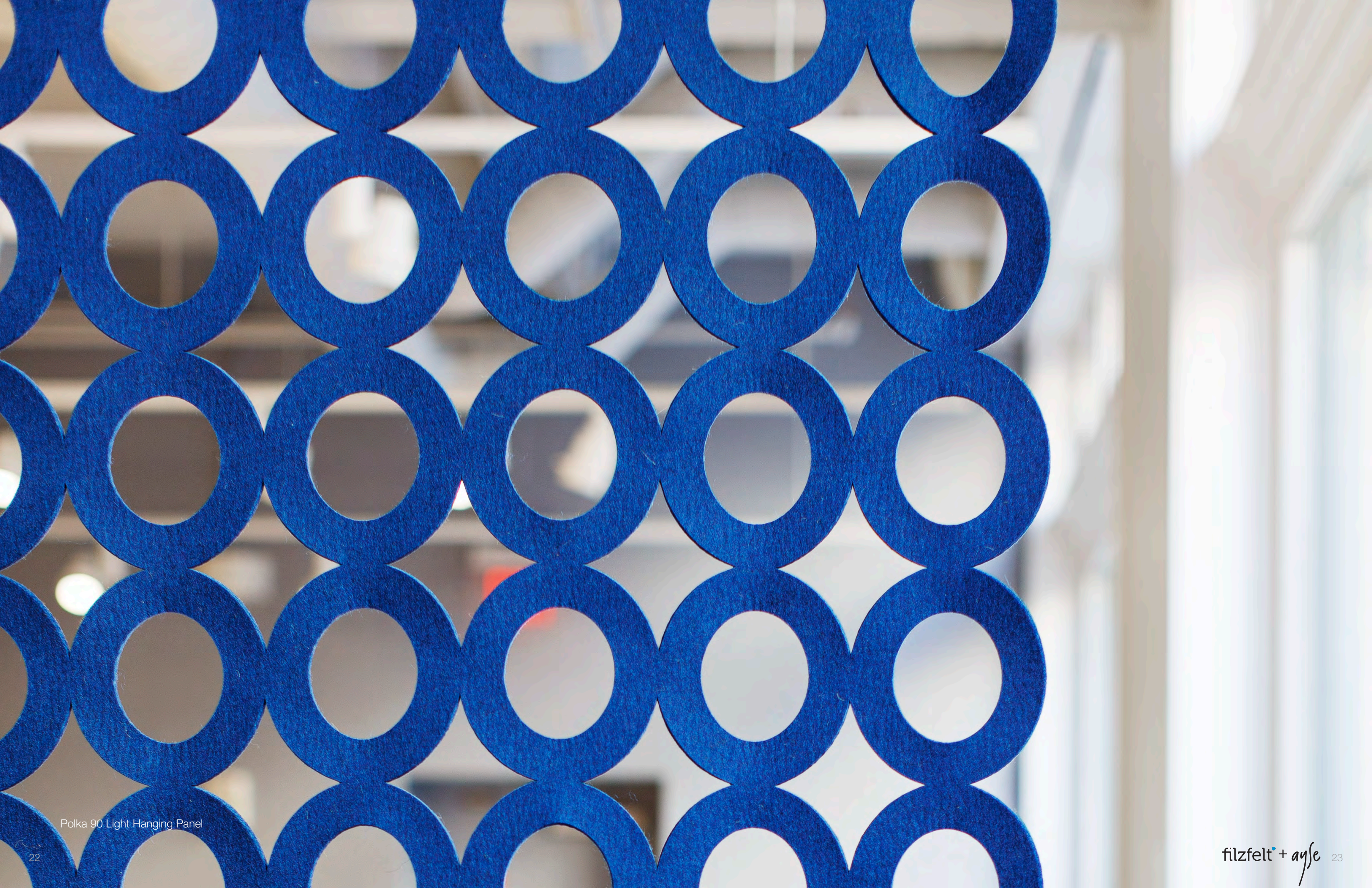
Concept sketch of Polka 120 Hanging Panel



Standard Size
5'-8 3/4" x 8'-2"

Polka 120 Hanging Panels are bold, graphic, and playful. Shifts in circle patterning at a 120 degree offset create an unexpected, sophisticated pattern. Circles are five inches in diameter and break the edge of the panel, allowing a smooth pattern transition between adjacent panels.

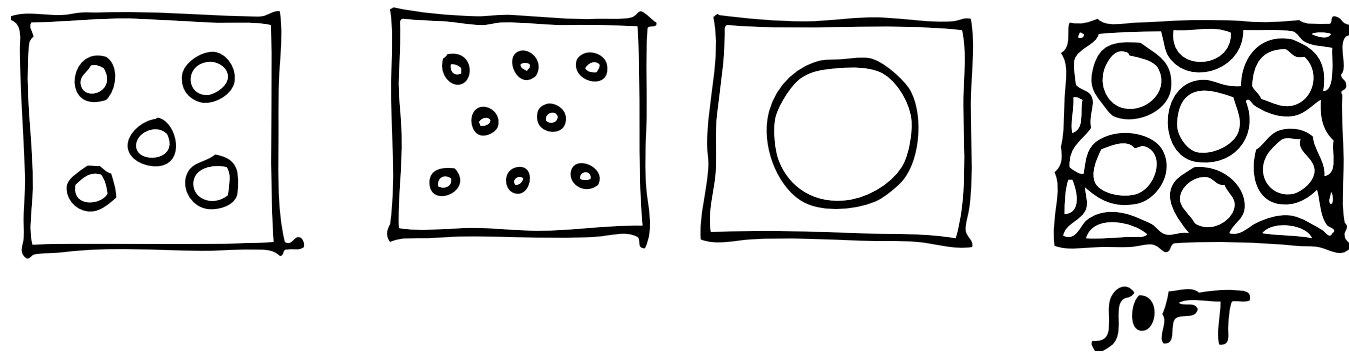
Available in one standard size and 43 colors of 5mm Wool Design Felt. Custom sizes are available upon request and panels may be installed with a sliding track system available through FilzFelt.



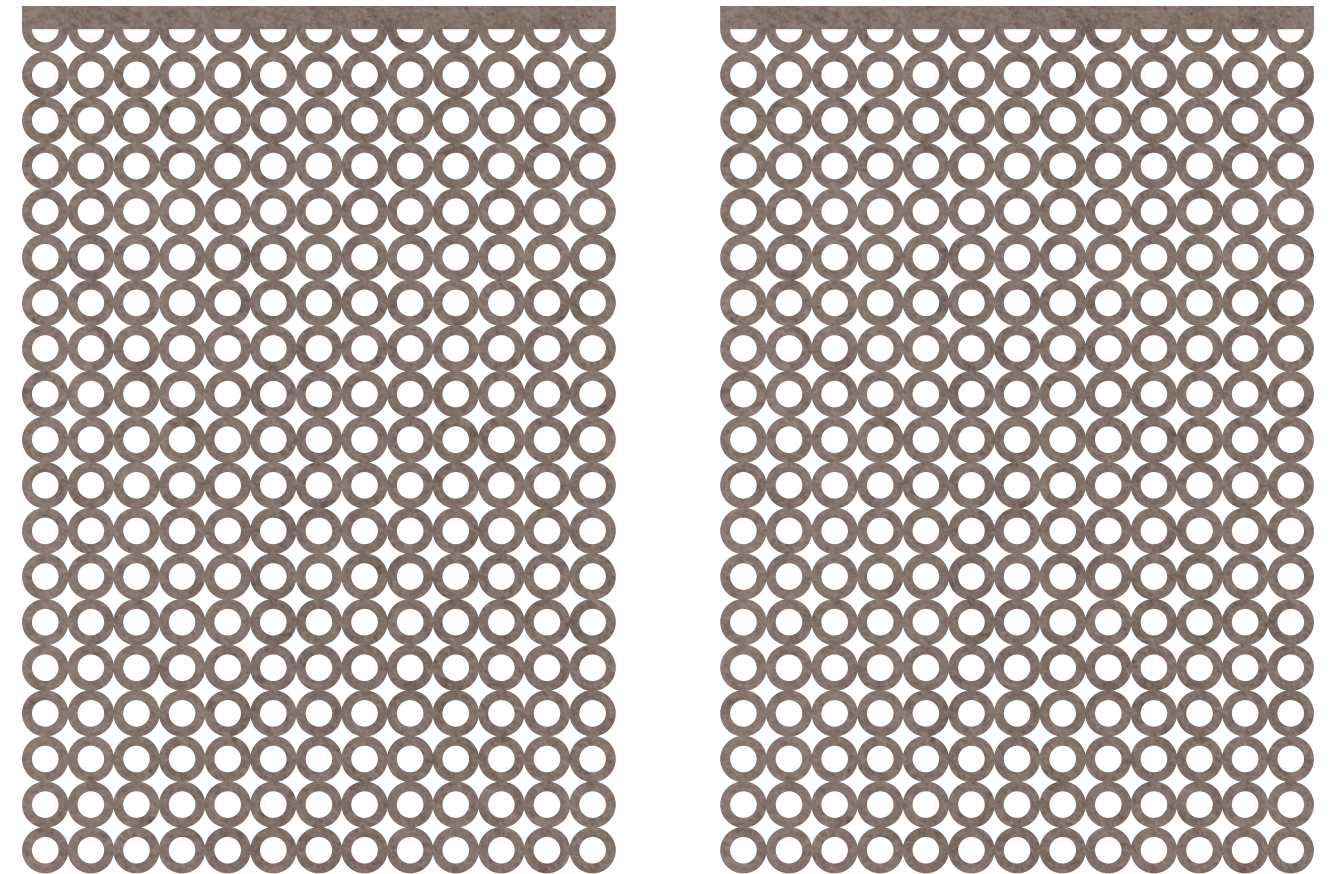
Polka 90 Light Hanging Panel

Hanging Panel: Polka 90 Light

LIGHTNESS: HOLE PATTERNS!



Concept sketch about lightness and patterning



Standard Size
5'-7" x 8'-0"

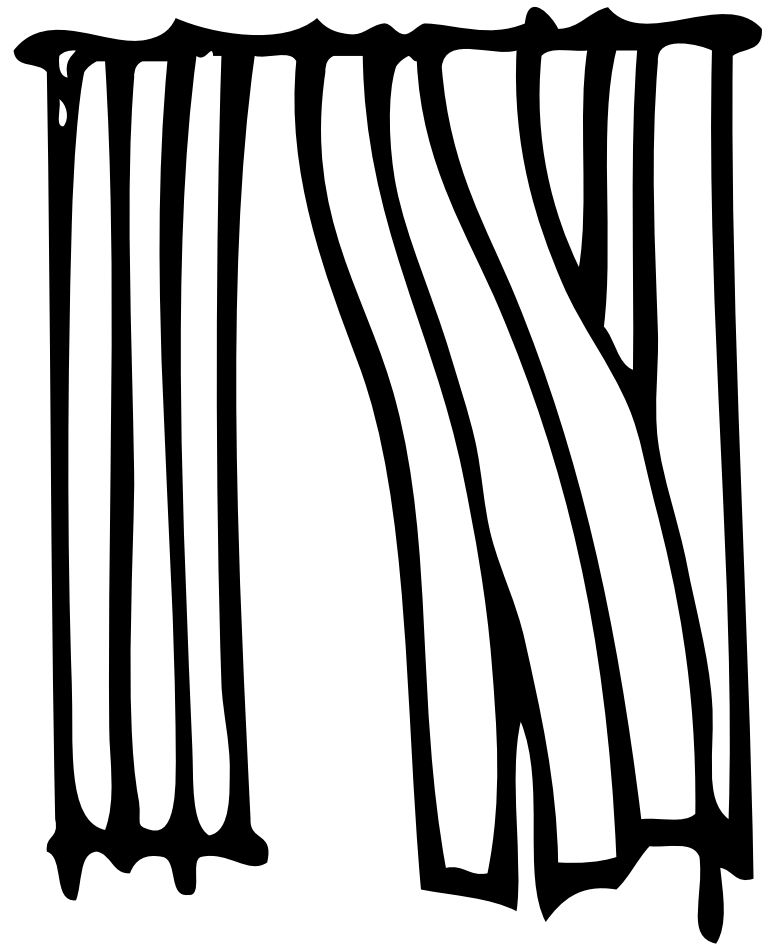
Ayse's initial concept for this collection focused on cutting away material to create lightness and opening. The Polka 90 Light Hanging Panels subtracts three inch diameter circles from the center of each five inch circle set in a 90 degree grid. The result is a structured panel with both lightness and stability.

Available in one standard size and 43 colors of 5mm Wool Design Felt. Custom sizes are available upon request and panels may be installed with a sliding track system available through FilzFelt.

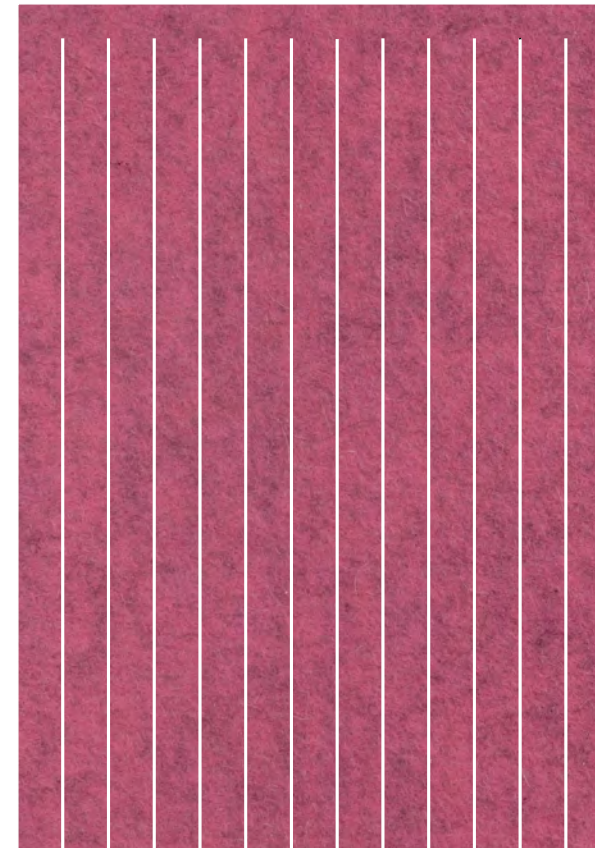


Fringe Hanging Panel

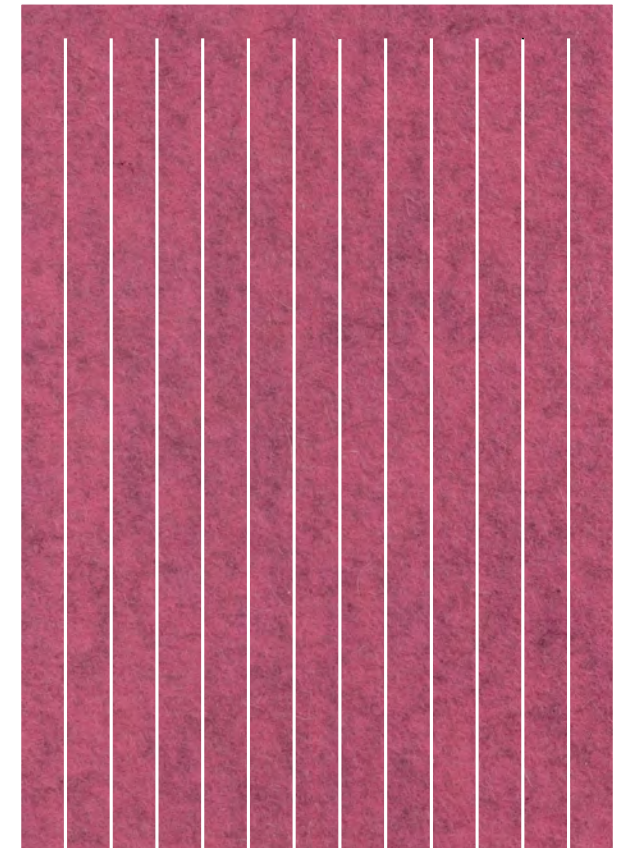
Hanging Panel: Fringe



Concept sketch for Fringe Panel



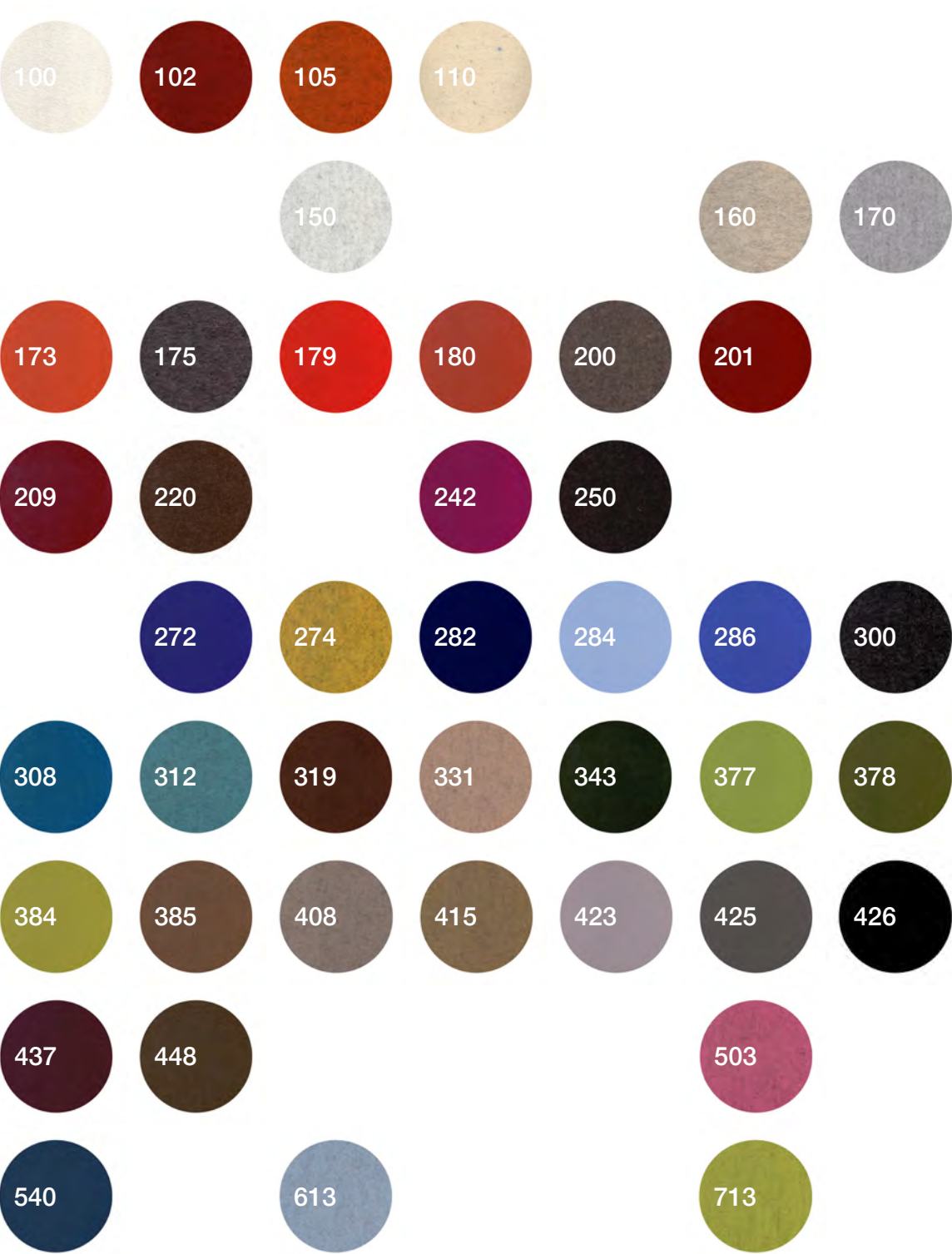
Standard Size
5'-7 1/4" x 8'-0"



Inspired by the repurposing of offcut felt strips in the FilzFelt warehouse and the edging on traditional Turkish rugs, Ayse blended old and new and scaled it up for whimsical, movement-filled panels. Attach on a sliding track for flexible room divider or wall-mount for a permanent drapery solution. Regardless of installation method, it will be impossible to resist poking your head through this interactive and playful felt screen.

Available in one standard size and 43 colors of 5mm Wool Design Felt. Custom sizes are available upon request and panels may be installed with a sliding track system available through FilzFelt.

Standard Colors



Hanging Panel Specifications

| | |
|---------------------------|---|
| Name | Wool Design Felt Hanging Panels |
| Content | 100% Wool Design Felt |
| Felt Thickness | 5 mm (3/16 in) |
| Standard Styles | Polka 90, Polka 120, Polka 90 Light, Fringe |
| Standard Sizes | 175 x 244 cm (5'-9" x 8'-0") |
| Perforation Sizes | 5" or 3" |
| Standard Colors | 43 Colorways |
| Maintenance | Vacuum occasionally to remove general air-borne debris. Should soiling occur, clean with a mild, water-free dry cleaning solvent. |
| Durability | Light contract or residential |
| Track System | FilzFelt can provide a track system to work with our Hanging Panels. Grommets and Velcro attachment options available. Please refer to the filzfelt.com/track-system for more information. |
| Custom | Custom sizes and patterns |
| Colorfastness to Light | Class 4-5 (40 hours) |
| Colorfastness to Crocking | Class 3-4 (Wet) Class 4-5 (Dry) |
| Environmental | Oeko-Tex Standard 100 Certified Product Class II |
| Flammability | ASTM E 84 Class A (unadhered) Euroclass EN 13501-1: B-s1-d0 (flame treated), D-s1-d0 (untreated) FAR 25.853(a): Pass (60 second vertical burn), Pass (12 second vertical burn) |
| Strength | ASTM D 5034 (Grab Test): 350 lbs (avg of warp), 344 lbs (avg of fill) |



Drapery

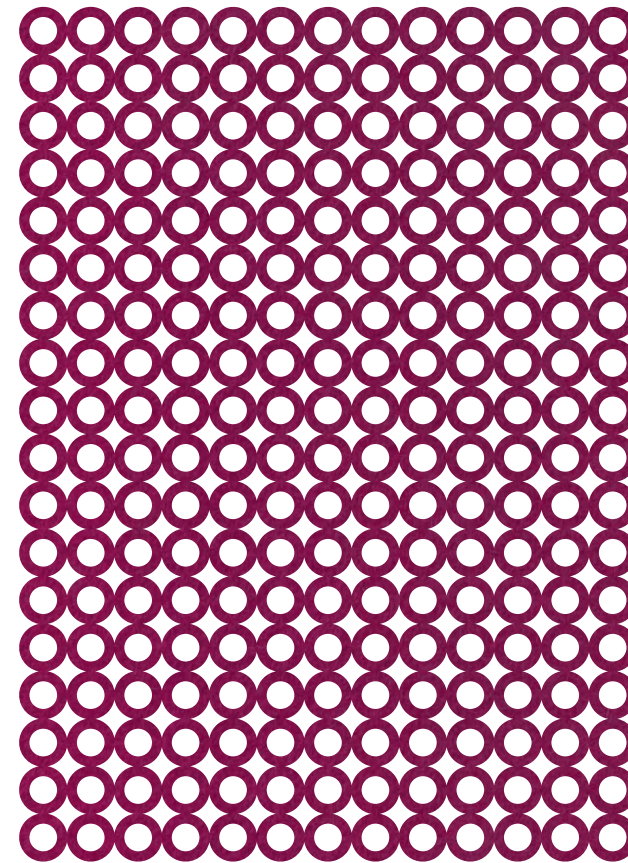
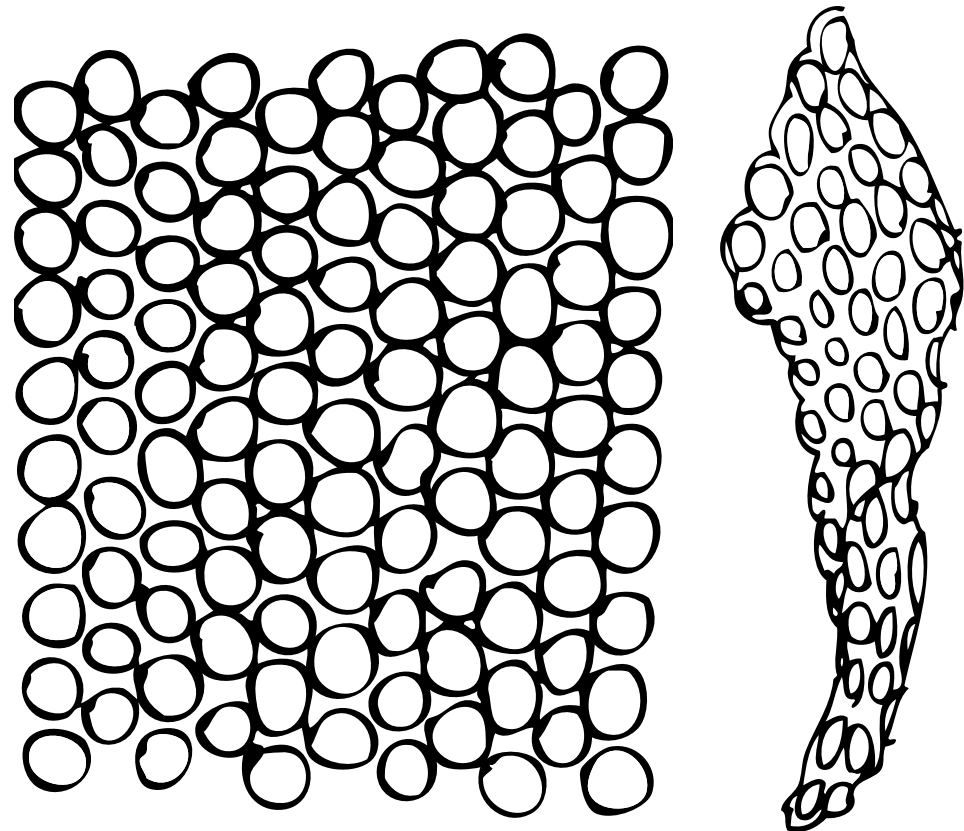
A softer counterpart to our hanging panels, the drapery in Ayse Birsal collection utilizes positive and negative space to create pattern rather than an applied design on a solid textile. These drapery patterns form a dramatic focal point within a space, which can be amplified with a saturated color or muted with a soft natural color.

This drapery collection was originally designed as a throw, however after the pieces had been cut the soft drape seemed perfect for a dramatic drapery solution. The patterns use the simple repetition of shapes and evoke a softness while draping and moving beautifully. These drapery panels are perfect as a minimal window treatment or can create a soft screening system with plenty of peek-a-boo moments. Draperies install on a traditional drapery rod and can provide minimal light control at windows or softly divide an interior space.

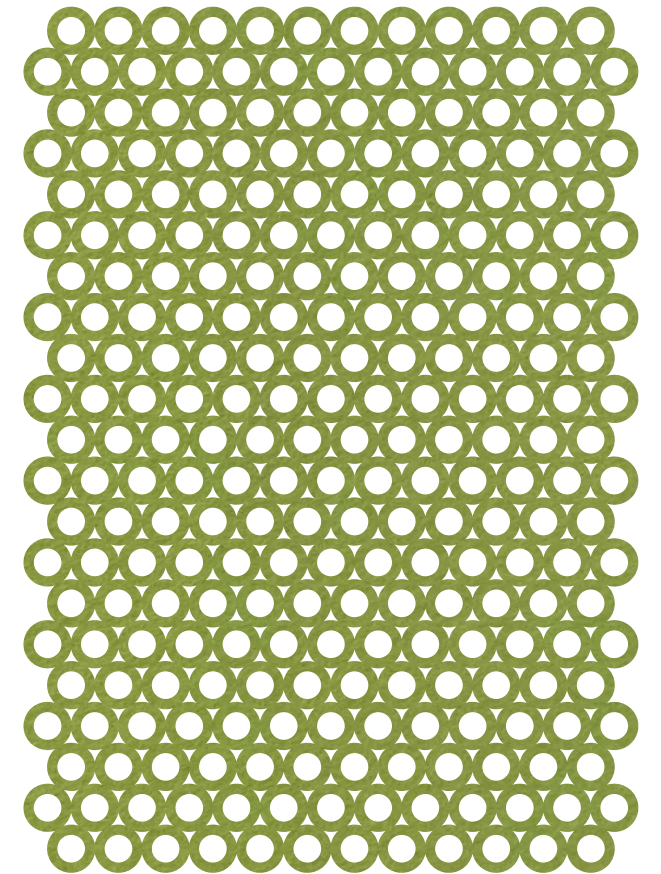
Polka 120 Light Drapery



Drapery: Polka 90 Light Polka 120 Light



Polka 90 Light
Standard Size: 5'-7" x 8'-2"



Polka 120 Light
Standard Size: 5'-7" x 7'-10"

Choose the simple Polka 90 Light or the offset companion Polka 120 Light. Each drapery panel comes with integrated three inch diameter grommet for easy hanging with a universal curtain rod.

Available in one standard size and 33 colors of 2mm Wool Design Felt. Custom sizes are available upon special request.

Standard Colors



Drapery Specifications

| | |
|------------------------------|---|
| Name | Wool Design Felt Drapery Panels |
| Content | 100% Merino Wool + 3" Nickel Grommets |
| Felt Thickness | 2 mm (1/16 in) |
| Standard Styles | Polka 90 Light, Polka 120 Light |
| Standard Sizes | Polka 90 Light: 170 x 248 cm (5'-7" x 8'-2") Polka 120 Light: 170 x 239 cm (5'-7" 7'-10") |
| Perforation Sizes | 3" |
| Standard Colors | 33 Colorways |
| Maintenance | Vacuum occasionally to remove general air-borne debris. Should soiling occur, clean with a mild, water-free dry cleaning solvent. |
| Durability | Contract or residential |
| Custom | Custom sizes available |
| Colorfastness to Light Class | 4-5 (40 hours) |
| Colorfastness to Crocking | Class 3-4 (Wet) Class 4-5 (Dry) |
| Environmental | Oeko-Tex Standard 100 Certified Product Class II |
| Flammability | ASTM E 84 Class A (unadhered) NFPA 701: Pass (flame treated) Euroclass EN 13501-1: B-s1-d0 (flame treated), D-s1-d0 (untreated) |



Floor Mats

Felt has long been established as a flooring covering material by nomadic peoples in Asia, where rugs, tents and clothing are still produced in wool felt. The Ayse Birsal Collection floor coverings are manufactured of the highest-quality 5mm-thick Wool Design Felt and are available in five colorways (all with Anti-Slip Backing) in two standard sizes.

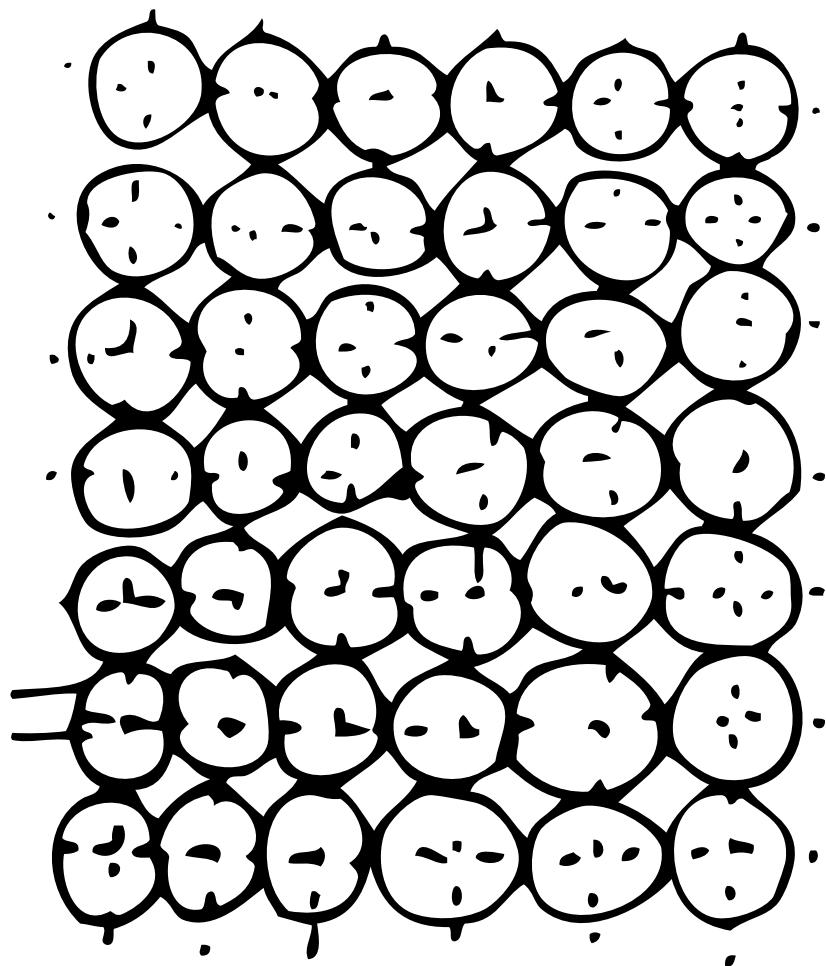
Inspired by circular remnants at the FilzFelt factory, Ayse took this simple shape and ran with it. Stamp would make the Postmaster General proud with just a hint of the circle shapes cut along the edges while Polka wholly embraces the repetition and rotation of circles. Fringe is a playful, modern and minimalist take on the tradition of Turkish carpets.

Polka 90 Floor Mat

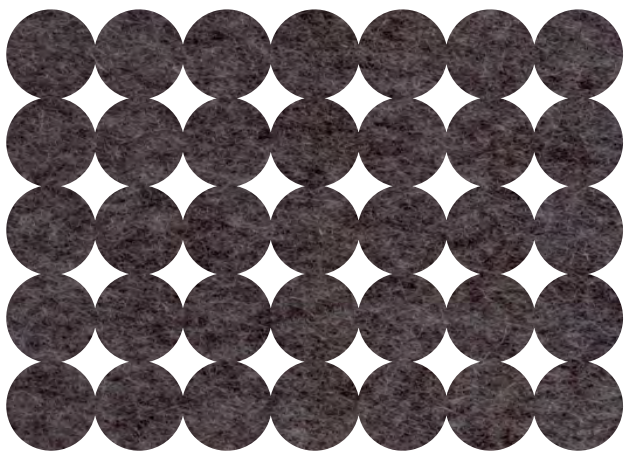


Polka 90 Floor Mat

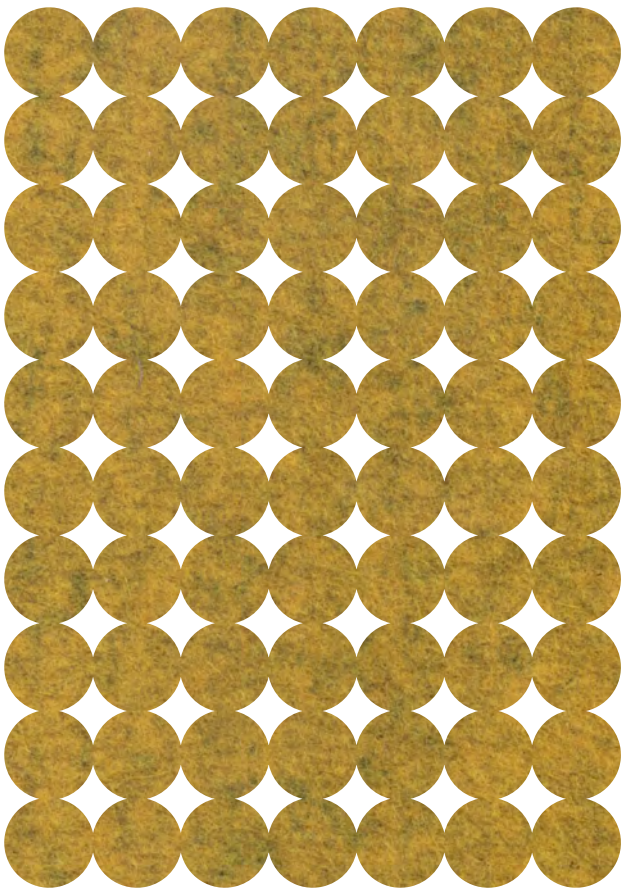
Floor Mat: Polka 90



Concept sketch



Medium
Standard Size: 4'-0" x 5'-9"



Large
Standard Size: 5'-9" x 8'-0"

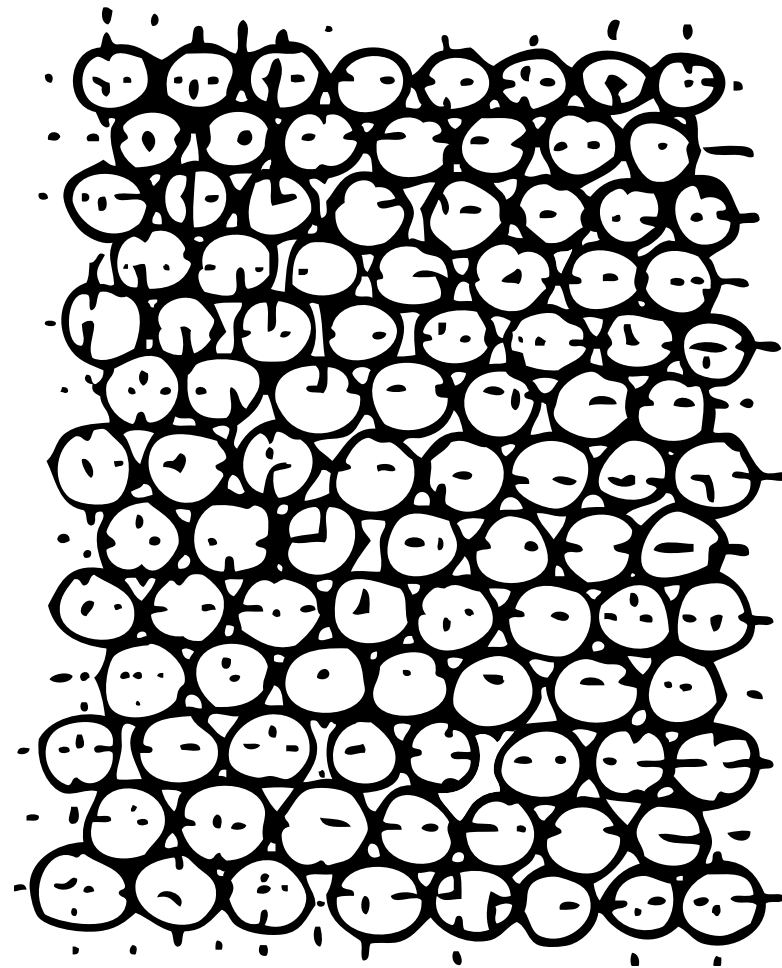
At FilzFelt, we hate picking favorites but, it's true, we love the circle. Circles are celebrated in the design of the Polka 90 Floor Mat. A simple grid of 10 inch diameter circles highlights the felt's natural ability to be cut cleanly without the need for finishing. Choose from two sizes or opt for a custom mat made to fit your specific size requirements.

Available in two standard sizes and five colors of 5mm Wool Design Felt with Anti-Slip Backing. Custom sizes and colors are available upon special request.

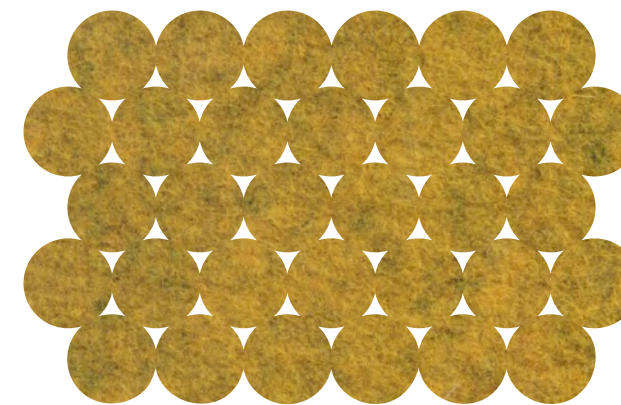


Polka 120 Floor Mat

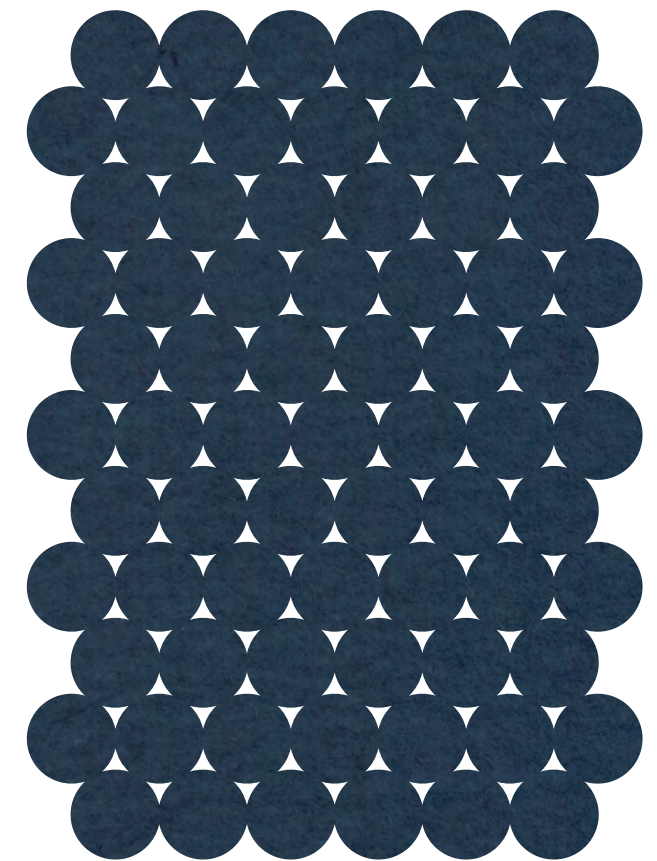
Floor Mat: Polka 120



Concept sketch



Medium
Standard Size: 4'-0" x 5'-9"



Large
Standard Size: 5'-9" x 8'-0"

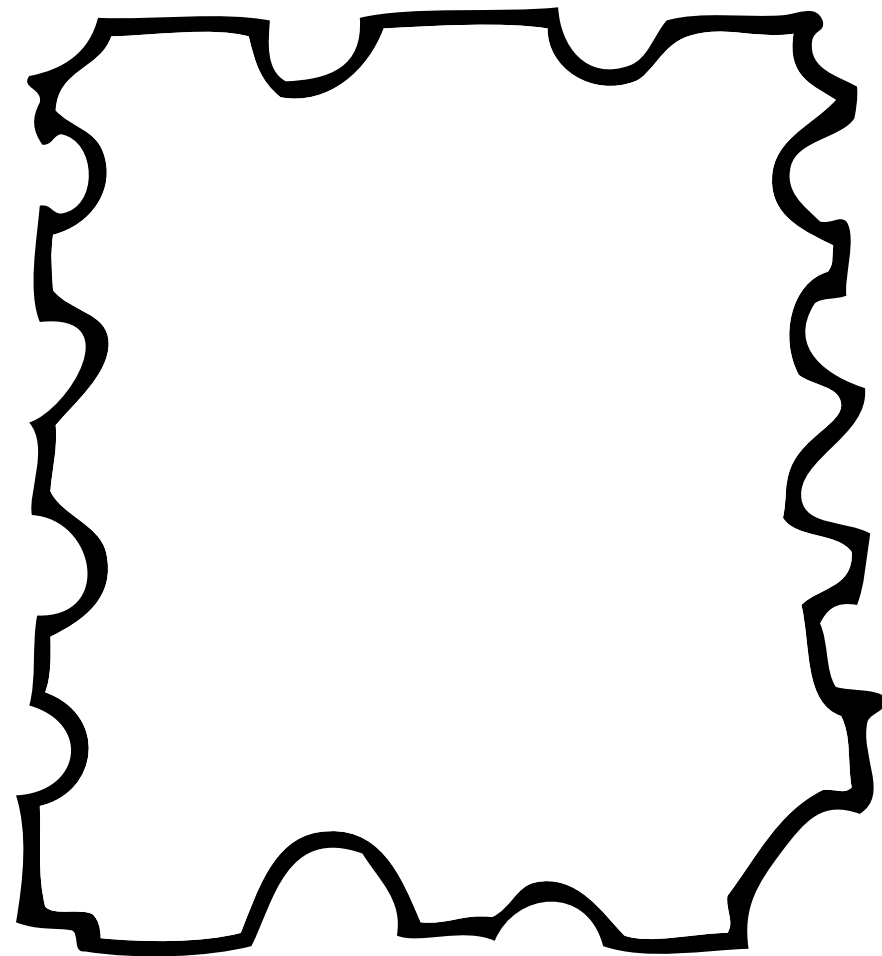
Simple but a little more playful and irregular, a 120 degree offset of circles is showcased in the Polka 120 Floor Mat. Here simplicity, symmetry, and repetition of 10 inch diameter circles takes center stage.

Available in two standard sizes and five colors of 5mm Wool Design Felt with Anti-Slip Backing. Custom sizes and colors are available upon special request.

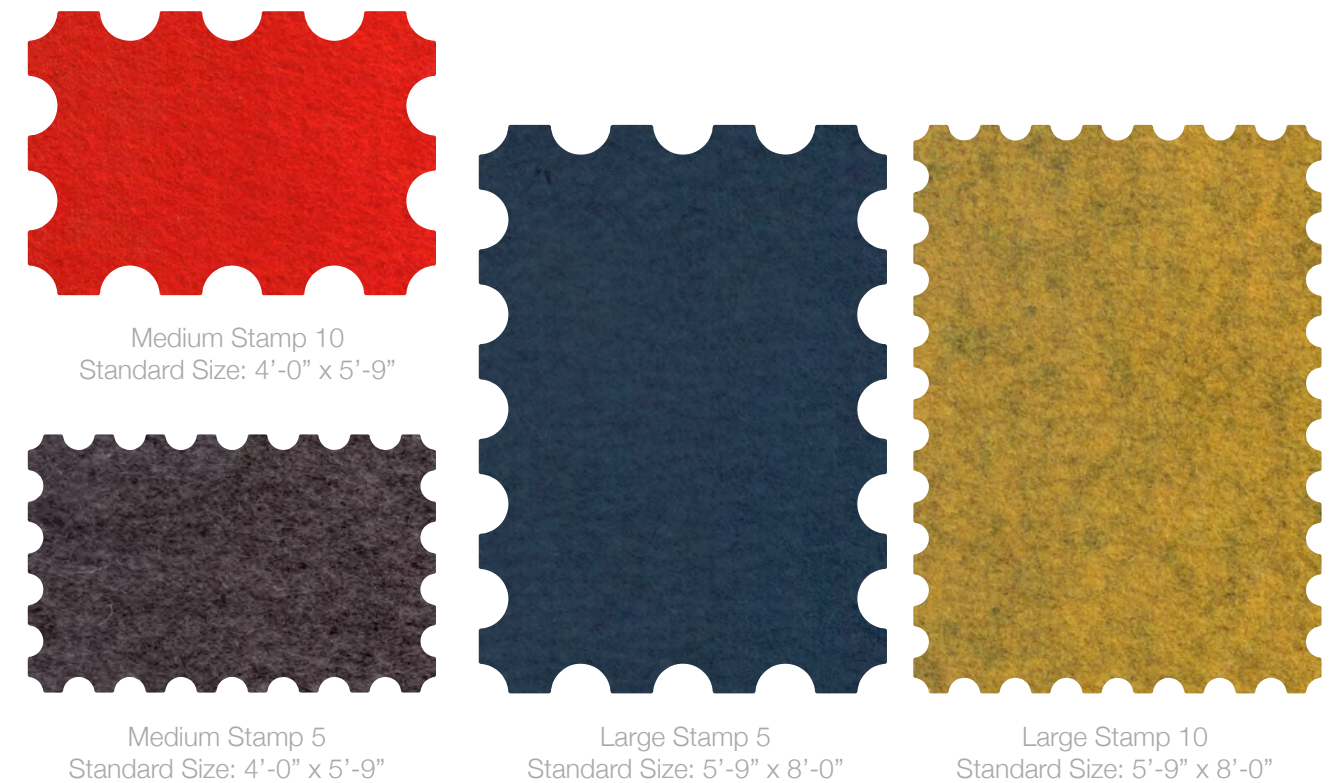


Stamp 5 Floor Mat

Floor Mat: Stamp 5 + Stamp 10



Concept sketch



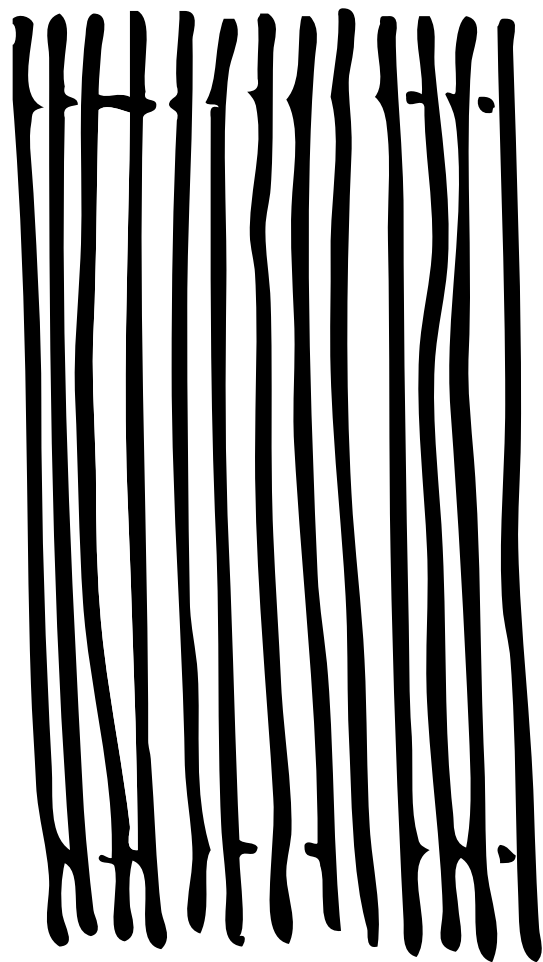
Articulating the edge of the mats with half-circle cutouts is a subtle nod to the ubiquitous postal stamp. Stamp 5 has 5 inch diameter circle cutouts along the perimeter and Stamp 10 goes big with 10 inch diameter cutouts. The scalloped edging is a little respite from the everyday floor covering.

Available in two standard sizes and five colors of 5mm Wool Design Felt with Anti-Slip Backing. Custom sizes and colors are available upon special request.

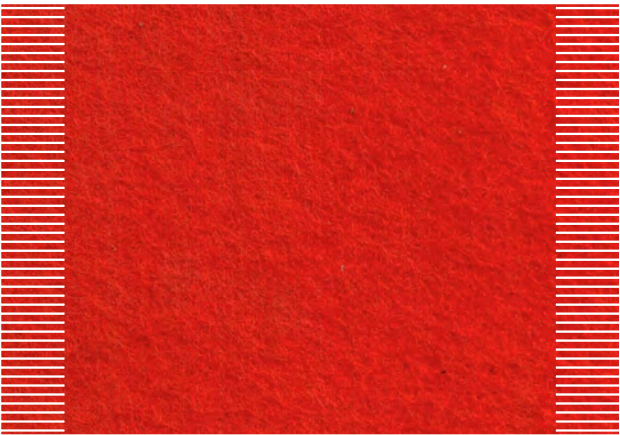


Fringe Floor Mat

Floor Mat: Fringe



Concept sketch of Fringe Floor Mat



Medium
Standard Size: 4'-0" x 5'-9"



Large
Standard Size: 5'-9" x 8'-0"

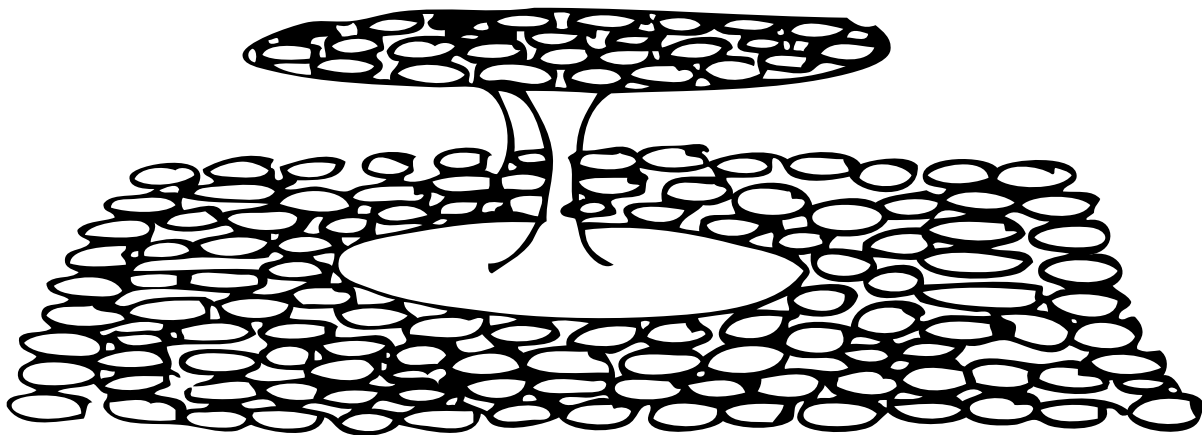
Take a magic carpet ride on lush 100% wool felt! The Fringe floor mat is a modern take on traditional carpets. Initially inspired by strips of felt leftover from custom projects, Ayse explored various edging details. The felt is cut with precision but once its down, is allowed to playfully ruffle about (unless you're one of those people who needs everything in its place).

Available in two standard sizes and five colors of 5mm Wool Design Felt with Anti-Slip Backing. Custom sizes and colors are available upon special request.

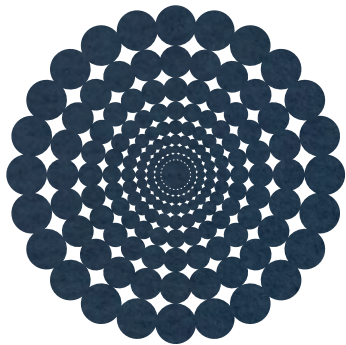


Polka 360 Round Floor Mat

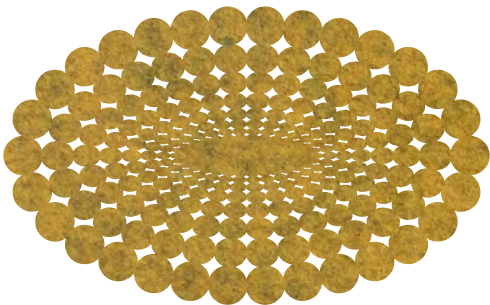
Floor Mat: Polka 360



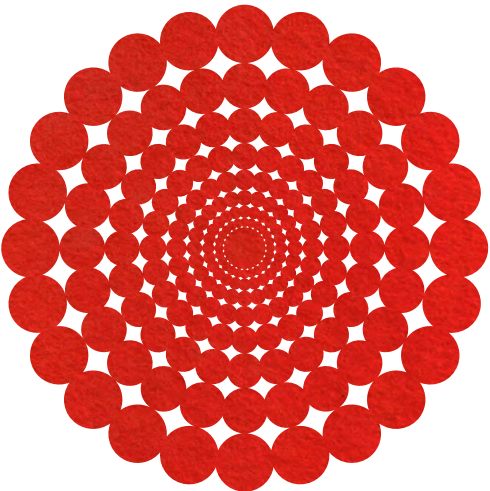
Concept sketch of floor mat and table mat



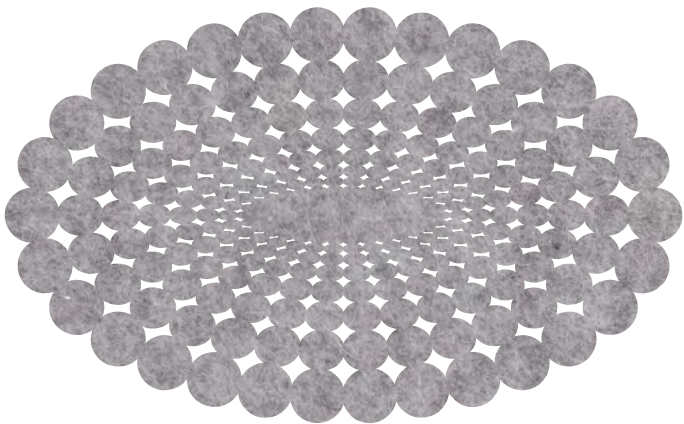
Medium Round
Standard Size: 4'-0" diameter



Medium Oval
Standard Size: 3'-6" x 5'-9"



Large Round
Standard Size: 5'-9" diameter



Large Oval
Standard Size: 4'-11" x 8'-0"

This series of floor mats was initially designed to complement Saarinen tables (check out the table mat version!) and takes repetition of the circle to the next level. Intricately cut in graduating of sizes radiating from the center and scaling up in size, Polka 360 is available in oval and round styles. This versatile mat can complement any shape of furniture (though it does have a thing for those of the circular persuasion).

Available in two standard sizes and five colors of 5mm Wool Design Felt with Anti-Slip Backing. Custom sizes and colors are available upon special request.

Standard Colors



Floor Mat Specifications

| | |
|---------------------------|--|
| Name | Wool Design Felt Floor Mats |
| Content | 100% Wool Design Felt with Anti-Slip Backing |
| Felt Thickness | 5 mm (3/16 in) |
| Standard Styles | Stamp 5, Stamp 10, Polka 90, Polka 120, Polka 360 Round, Polka 360 Oval, Fringe |
| Standard Sizes | Medium: 122 x 175 cm (4'-0" x 5'-9") Large: 175 x 244 cm (5'-9" x 8'-0") |
| Standard Colors | 170 Asche, 175 Graphit, 179 Hellrot, 274 Senf, 540 Ozean |
| Maintenance | Vacuum occasionally to remove general air-borne debris. Should soiling occur, clean with a mild, water-free dry cleaning solvent. |
| Durability | Light contract or residential |
| Custom | Custom colors, sizes and custom fabrication including cutting, lamination, stitching and embroidery. Additional charges and lead times may apply. |
| Colorfastness to Light | Class 4-5 (40 hours) |
| Colorfastness to Crocking | Class 3-4 (Wet) Class 4-5 (Dry) |
| Environmental | Oeko-Tex Standard 100 Certified Product Class II |
| Flammability | ASTM E 84 Class A (unadhered) Euroclass EN 13501-1: B-s1-d0 (flame treated), D-s1-d0 (untreated) |
| Durability + Strength | ASTM D 3511 Brush Pill Tester Method: Class 4 ASTM D 4966 Martindale Abrasion Tester Method: 40,000 Cycles - Grade 3 ASTM D 5034 (Grab Test): 350 lb (avg of warp), 344 lb (avg of weft) |



Tabletop

Designed with Saarinen tables in mind, the Doily collection is a wry take on the iconic lacey mats found at Grandma's house. This modernized lace protects your table from the damages of a life lived, without sacrificing style.

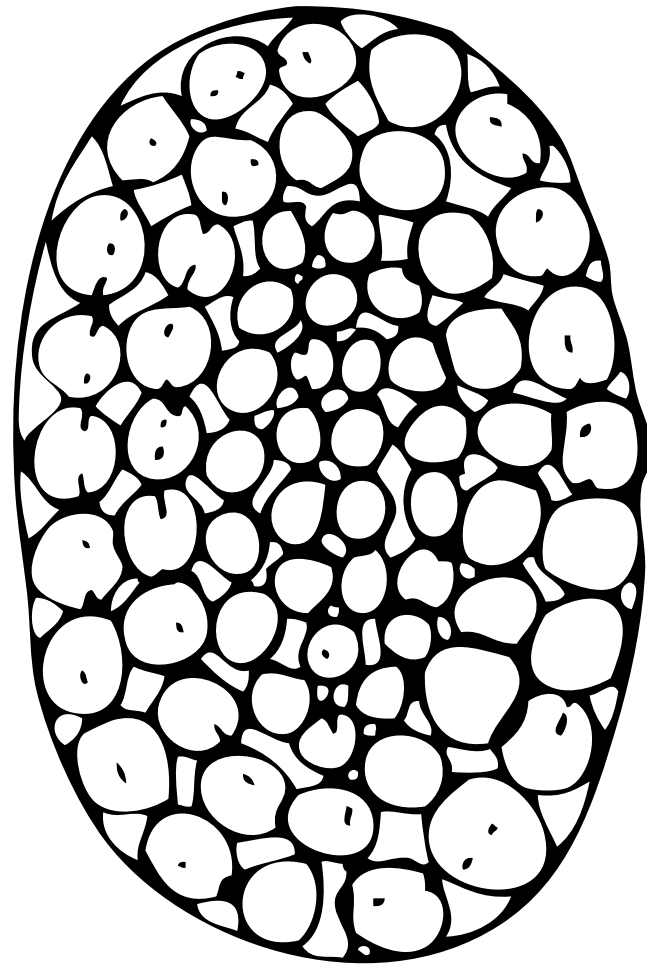
Have a table of the rectangular sort? We've got you covered with our equally awesome table runners. Choose from two patterns, Polka 90 and Fringe, to add a bright pop of color and texture to any table.

Saarinen 16 Doily and Saarinen 20 Doily Table Mats



Saarinen 42 Doily Table Mat

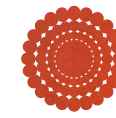
Tabletop: Table Mats



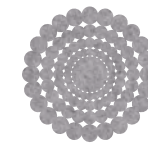
Concept sketch of Saarinen Table Mat



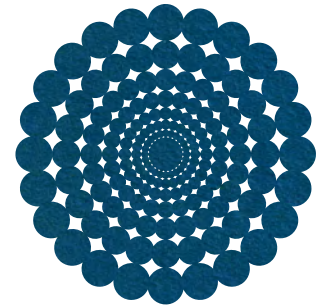
Saarinen Doily 22 Oval



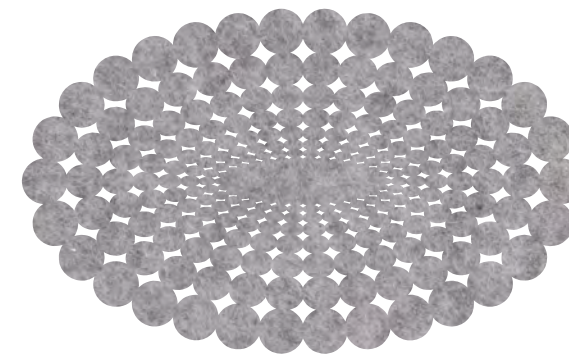
Saarinen Doily 16



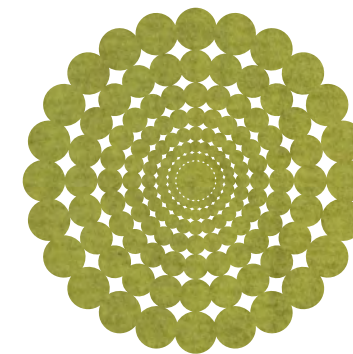
Saarinen Doily 20



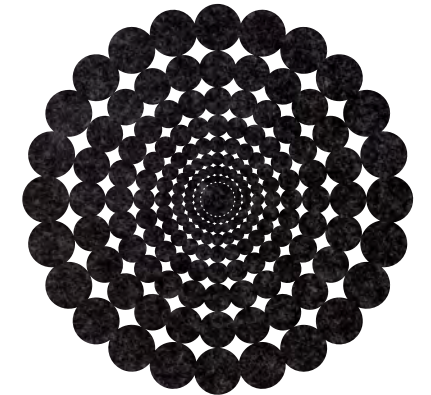
Saarinen Doily 42



Saarinen Doily 78 Oval



Saarinen Doily 48

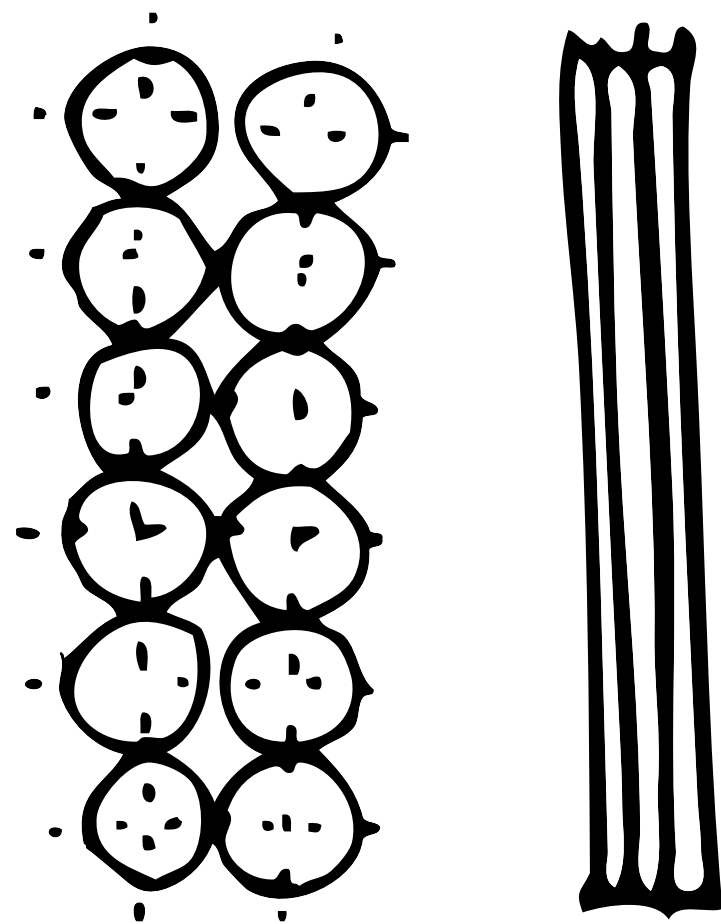


Saarinen Doily 54

Saarinen tables by Knoll are classics that will live several lifetimes and, let's be honest, deserve some TLC. Doily Table Mats are designed to come an inch from the edge to protect the entire surface. So Saarinen Doily 16 corresponds with the Saarinen 16 Round table and so on. But don't feel penned in! The versatility of these mats means that they can find themselves on tabletops as placemats or elsewhere around the home.

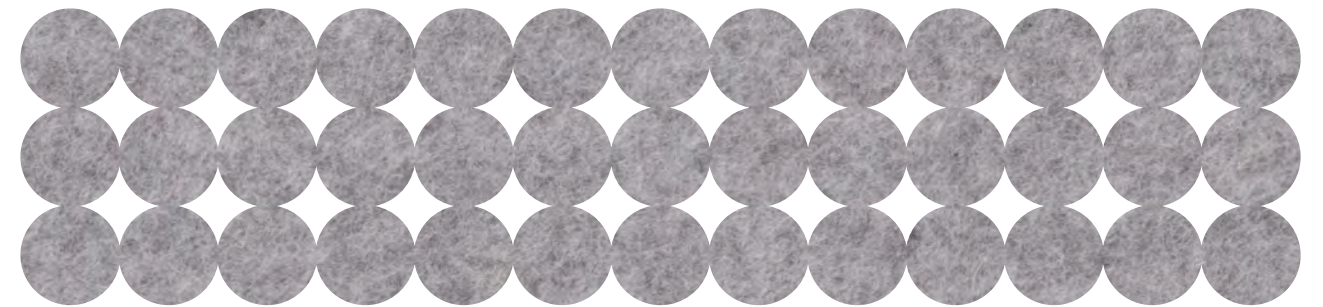
Available in several standard sizes and five colors of 3mm Wool Design Felt. Custom sizes and colors are available upon special request.



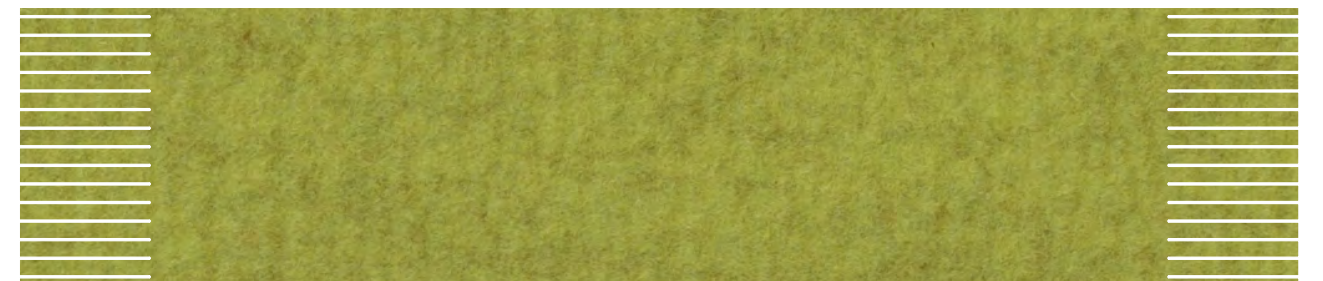


Concept sketches of table runners

Tabletop: Runners



Polka 90
Standard Size: 5'-9" x 1'-3"



Fringe
Standard Size: 5'-9" x 1'-3"

The table runners in this collection were conceived early on in the design process, as the smallest scaled application of pattern making. Polka 90 and Fringe both provide the same graphic punch as their larger siblings, but are sized to protect and accessorize any table.

Available in several standard sizes and five colors of 3mm Wool Design Felt. Custom sizes and colors are available upon special request.

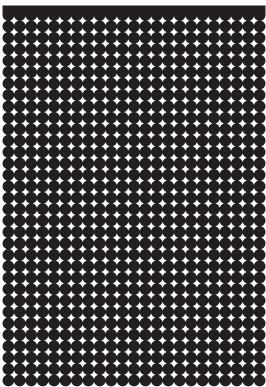
Standard Colors



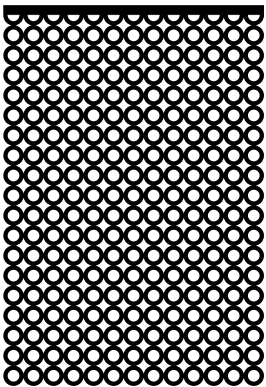
Tabletop Specifications

| | |
|---------------------------|---|
| Name | Design Felt Tabletop Accessories |
| Content | 100% Wool Design Felt |
| Felt Thickness | 3 mm (1/8 in) |
| Standard Sizes | Saarinen Doily 16: 40.5 cm diameter (1'-2" diameter) Saarinen Doily 20: 51 cm diameter (1'-6" diameter) Saarinen Doily 42: 107 cm (3'-4" diameter) Saarinen Doily 48: 122 cm (3'-10" diameter) Saarinen Doily 54: 137 cm (4'-4" diameter) Saarinen Doily 22 Oval: 47 cm x 29 cm (1'-6 1/2" x 11 1/2") Saarinen Doily 78 Oval: 117 cm x 190 cm (3'-10" x 6'-2 3/4") Table Runner: 175.26 cm x 38.1 cm (5'-9" x 1'-3") |
| Standard Colors | 170 Asche, 173 Mango, 300 Anthrazit, 308 Petrol, 713 Kiwi |
| Maintenance | Vacuum occasionally to remove general air-borne debris. Should soiling occur, clean with a mild, water-free dry cleaning solvent. |
| Durability | Light contract or residential |
| Custom | Custom sizes available |
| Colorfastness to Light | Class 4-5 (40 hours) |
| Colorfastness to Crocking | Class 3-4 (Wet) Class 4-5 (Dry) |
| Environmental | Oeko-Tex Standard 100 Certified Product Class II |
| Flammability | ASTM E 84 Class A (unadhered) NFPA 206: Class 1 CAL 117: Pass Euroclass EN 13501-1: B-s1-d0 (flame treated), D-s1-d0 (untreated), Bfl-s1-d1 (untreated) FAR 25.853(a): Pass (60 second vertical burn) Pass (12 second vertical burn)) |
| Durability + Strength | ASTM D 4966 (Martindale Abrasion Tester Method): 5,000 Grade 4 10,000 Grade 3.5 20,000 Grade 2 40,000 Grade 3 ASTM D 5034 (Grab Test): 350 lb (avg of warp), 344 lb (avg of weft) |

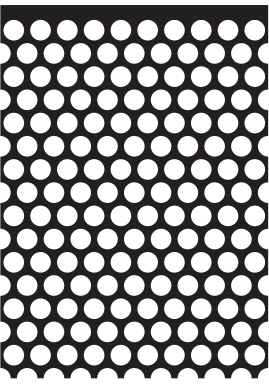
Hanging Panels



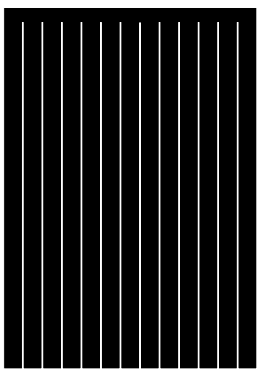
Polka 90



Polka 90 Light

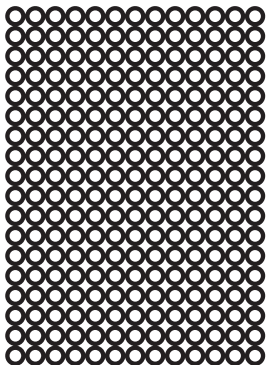


Polka 120

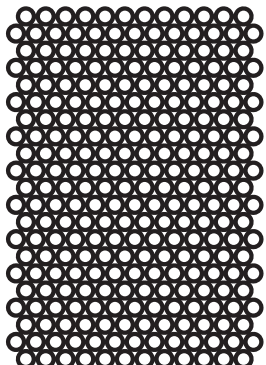


Fringe

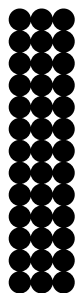
Drapery



Polka 90 Light



Polka 120 Light



Polka 90



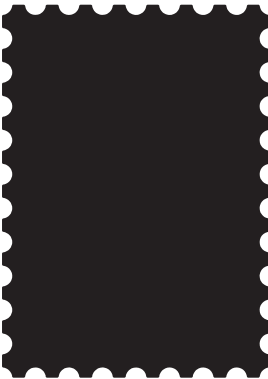
Fringe

Table Runners

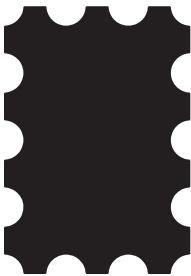
Floor Mats



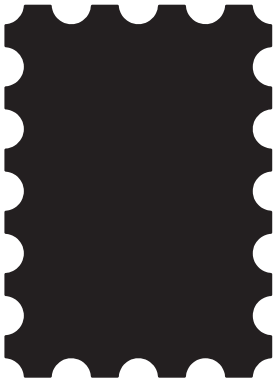
Medium Stamp 5



Large Stamp 5



Medium Stamp 10



Large Stamp 10

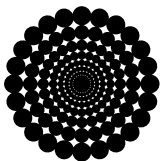
Table Mats



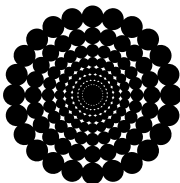
Saarinen 16 Doily



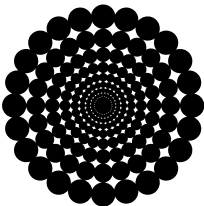
Saarinen 20 Doily



Saarinen 42 Doily



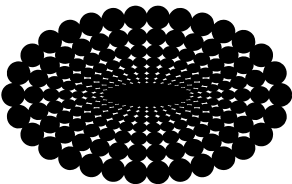
Saarinen 48 Doily



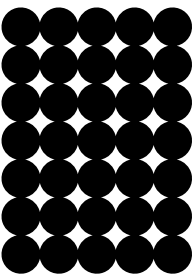
Saarinen 54 Doily



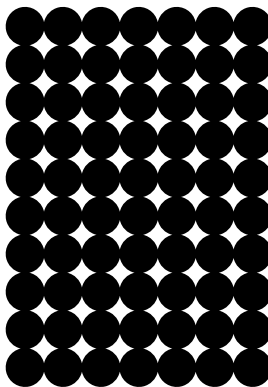
Saarinen 22 Oval Doily



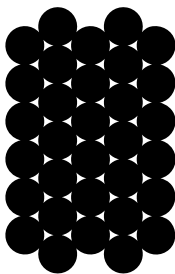
Saarinen 78 Oval Doily



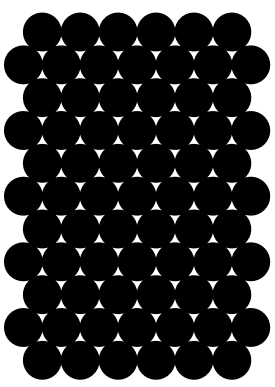
Medium Polka 90



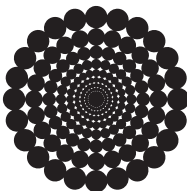
Large Polka 90



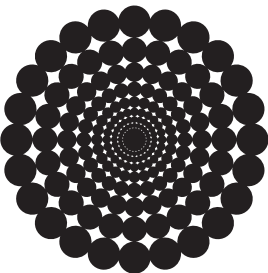
Medium Polka 120



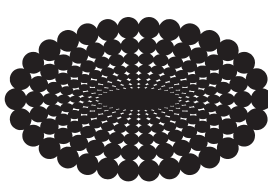
Large Polka 120



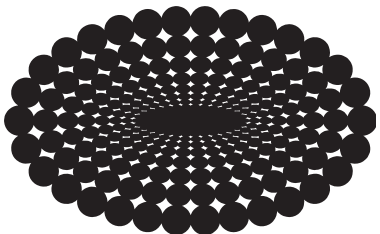
Medium Polka 360 Round



Large Polka 360 Round



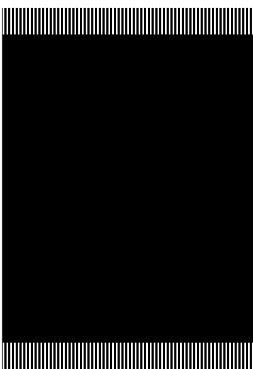
Medium Polka 360 Oval



Large Polka 360 Oval



Medium Fringe



Large Fringe

