



filzfelt

Polka 90 Light Drapery

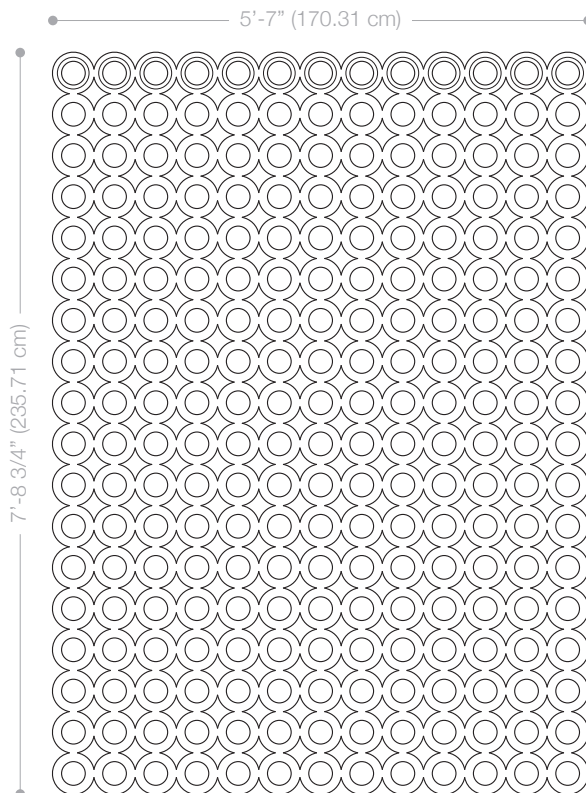


# Polka 90 Light Drapery



A softer counterpart to our hanging panels, the drapery in the Ayse Birsal Collection utilizes positive and negative space to create pattern rather than an applied design on a solid textile. Polka 90 Light Drapery subtracts three inch diameter circles from the center of each five inch circle set in a 90 degree grid. Draperies install on a traditional drapery rod and can provide minimal light control at windows or softly divide an interior space. Available in one standard size and 33 colors of 2mm Wool Design Felt with integrated grommets.

Standard Size



# Specifications

<b>Name</b>	Polka 90 Light Drapery
<b>Designer</b>	Ayse Birsal
<b>Content</b>	100% Wool Design Felt + 3" Nickel Grommets
<b>Felt Thickness</b>	2 mm (1/16 in)
<b>Standard Size</b>	5'-7" x 8'-2" (170 x 249 cm)
<b>Maintenance</b>	Vacuum occasionally to remove general air-borne debris. Should soiling occur, clean with a mild, water-free dry cleaning solvent.
<b>Durability</b>	Contract or residential
<b>Installation</b>	Polka 120 Light Drapery comes with 3" nickel grommets that allow for easy hanging on any standard drapery rod.
<b>Custom</b>	Custom sizes up to 69 in (175 cm) in width
<b>Colorfastness to Light</b>	Class 4-5 (40 hours)
<b>Colorfastness to Crocking</b>	Class 3-4 (wet), Class 4-5 (dry)
<b>Environmental</b>	Oeko-Tex Standard 100 Certified Product Class II
<b>Flammability</b>	ASTM E 84 Class A (unadhered) Euroclass EN 13501-1: B-s1-d0 (flame treated), D-s1-d0 (untreated) NFPA 701: Pass (flame treated)

## Standard Colors

