



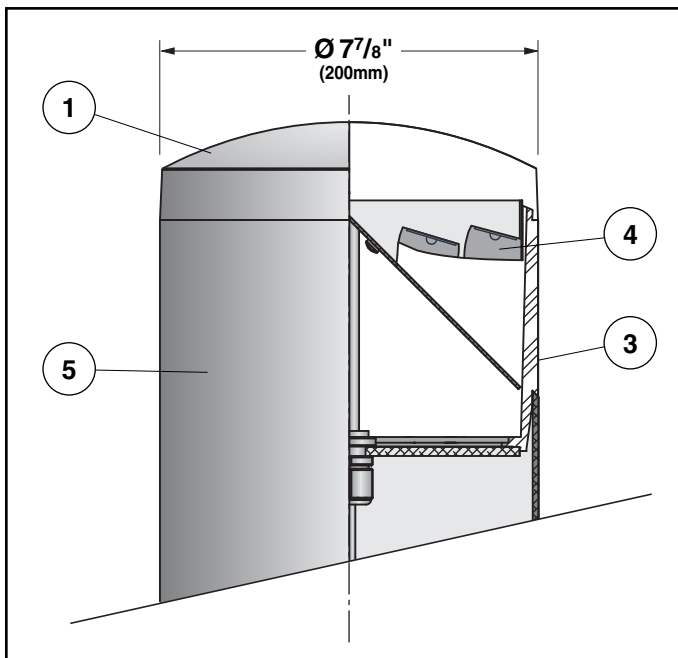
Project: _____

Type: _____ **Qty:** _____

NT - Height - L012 - _____ - _____
 Fixture Series Height Lamp Engine Finish Voltage Options

Fixture Series	Height	Lamp Engine	Finish	Voltage	Options
NT Notch Bollard	2 2 ft. (.6m)	L012 36W array of 12 high output white LEDs mounted to metal core PC boards. Input wattage = 33w	WH White	120 208 230 240 277 347*	HL High-low Switching (see p.2 for details)
	3 3 ft. (.9m)		BK Black		
	4 4 ft. (1.2m)		BZ Bronze		
	or specify custom height		SV Silver		
			SP Specify RAL #		

* Requires transformer



1. Fixture Cover - Die-cast, aluminum cover with integrated heat dissipation features.

2. Gasketing - (not shown) Continuous silicone gasket provides weather-proofing, dust, and insect control at shielding base, and fixture cover.

3. Shielding - Translucent, continuous one-piece injection molded, UV stabilized polycarbonate lens, minimum wall thickness 5/16" (8.25mm). Shielding is flush with column surface completely enclosing optic chamber.

4. Lamp Engine - (not shown) (12) High output 3W LEDs mounted to 2 individual metal core PC boards attached to an extruded aluminum optic. The optic acts as a heatsink for maximum LED performance and life. Input wattage is 33w. Includes integrated LED drivers and precise high performance anodized optics. Complete light engine can be easily interchanged via plug-in terminal connector, or each board can be replaced individually. LEDs can be started and re-started instantly at temperatures as low as -40C. Long lamp life, 70% lumen maintenance at 50,000 hours of operation. Ideal for emergency circuiting.

5. Column - Extruded, thick-walled aluminum, minimum wall thickness 0.118" (3mm) with internal anchor bolts and flush handhole.

Exterior Luminaire Finish - SELUX utilizes a high quality Polyester Powder Coating. All SELUX luminaires and poles undergo a five stage intensive pretreatment process where product is thoroughly cleaned, phosphated and sealed. SELUX powder coated products provide excellent salt and humidity resistance as well as ultra violet resistance for color retention. All products are tested in accordance with test specifications for coatings from ASTM and PCI.

Standard exterior colors are White (WH), Black (BK), Bronze (BZ), and Silver (SV). RAL colors (SP) are available, please specify RAL#.

SELUX Corp. © 2005
 5 Lumen Lane,
 Highland, NY 12528
 TEL: (845) 691-7723
 FAX: (845) 691-6749
www.selux.com/usa
 NT-0707-01 (v1.4)

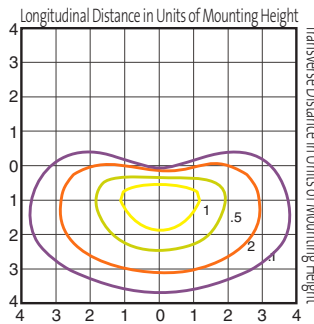
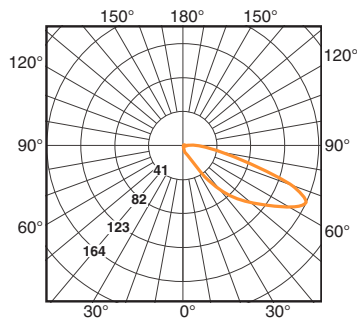


In a continuing effort to offer the best product possible, we reserve the right to change, without notice, specifications or materials that in our opinion will not alter the function of the product. Specification sheets found at www.selux.com/usa are the most recent versions and supercede all other printed or electronic versions.

Photometry

Catalog #NT - L012
Report # 1411aa2

- Innovative anodized optic creates uniform illumination and controls glare
- Maximum candela of 164 at 65° from vertical
- IES classification: Type IV Semi-Cutoff



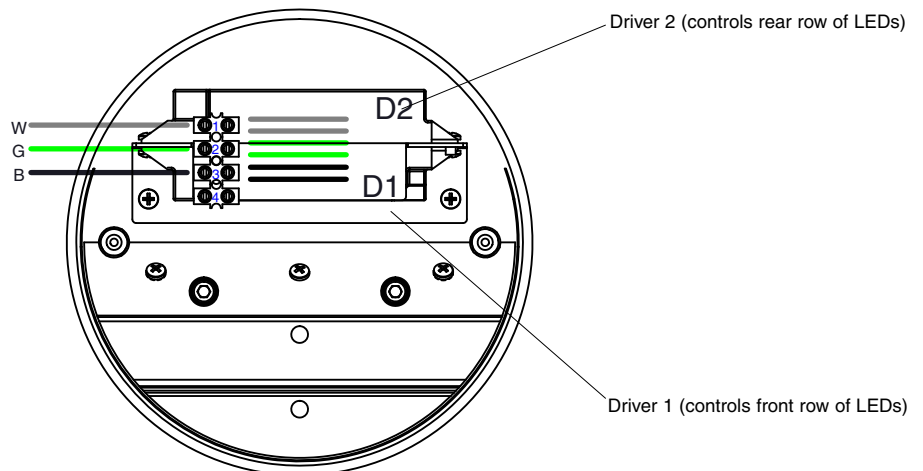
Conversion Chart	
Values based on 4' (1.2m) mounting height	
Mounting Height	Multiply
2.0' (.6m)	4.00
2.5' (.8m)	2.56
3.0' (.9m)	1.78
3.5' (1.1m)	1.31
4.0' (1.2m)	1.00

Standard Single High Output Wiring

High-low Switching option not specified.

Driver 1 and Driver 2 hot wired to terminal 3.

Red wire from supplied four conductor feed cable not to be used.



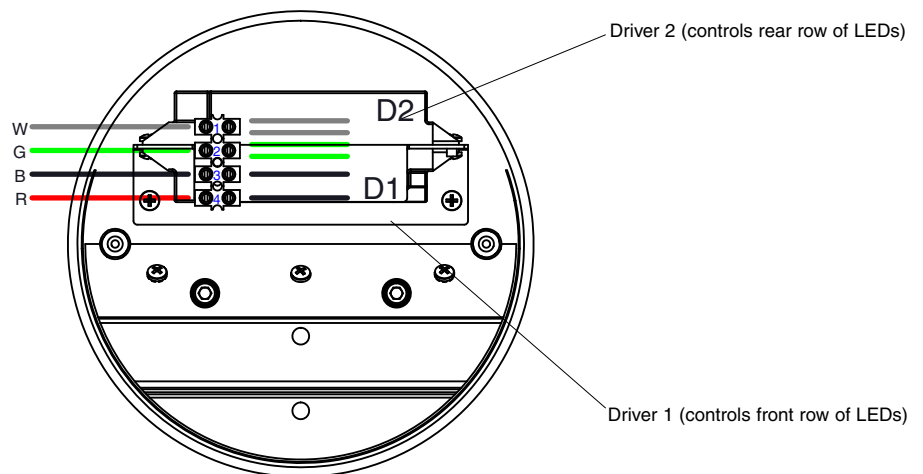
High-Low Switching Wiring

High-low Switching option specified.

Supplied four conductor feed cable to be connected as shown.

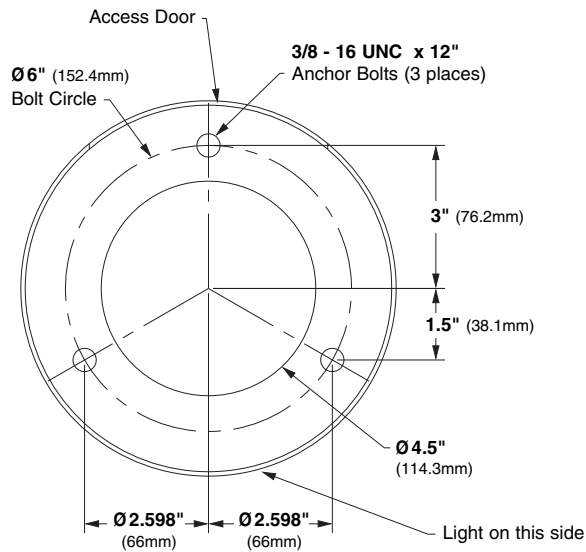
LOW MODE - Red feed live;
D2 operating;

HIGH MODE - Red and black feeds live;
D1 and D2 operating;



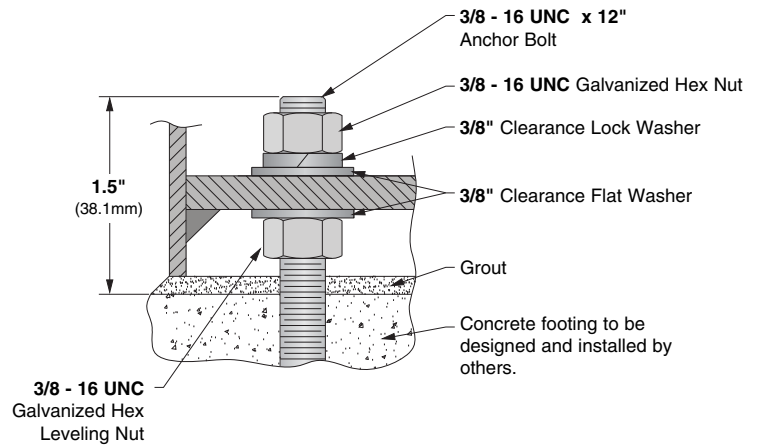
Bolt Circle

Use caution when setting anchor bolts. Bolts must be vertically straight and centered on dimensions shown.



Anchor Bolt Detail

Suggested anchor bolt projection
1 - 1 1/2" (25 - 38mm). Stub conduit above concrete footing.



Note: Adequate drainage must be provided in concrete foundation or grout.

Profile

