

INSTALLATION INSTRUCTIONS

NEW SALEM 0255.112 / 0255.212

NEW SOLAR 0263.112 / 0263.212

Enameled Steel Bath

*American
Standard*

Thank you for selecting American Standard - the benchmark of fine quality for over 100 years. To ensure this product is installed properly, please read these instructions carefully before you begin. (Certain installations may require professional help.) Also be sure your installation conforms to local codes.

CAUTION: RISK OF PERSONAL INJURY. ENAMELED STEEL BATHS ARE HEAVY. THIS IS A TWO PERSON INSTALLATION.

Recommended Tools & Materials

- Tape Measure
- Level
- Square

- Pliers
- Pipe Wrench
- Hacksaw
- Hammer

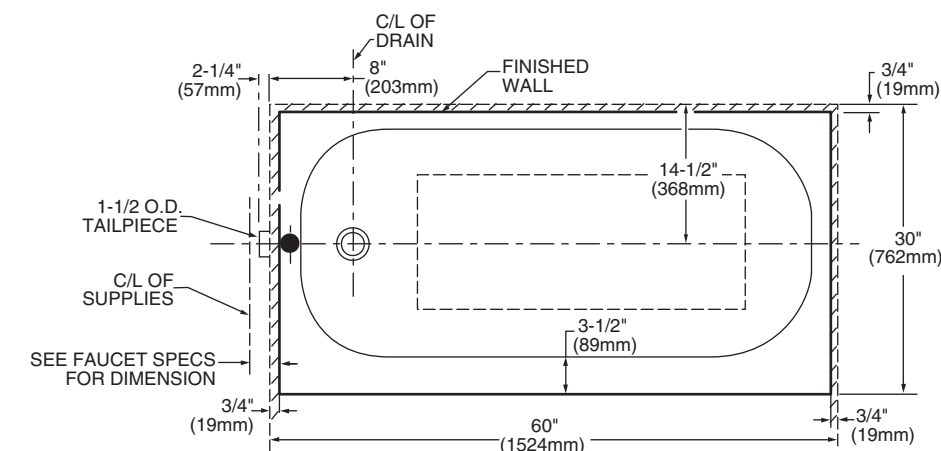
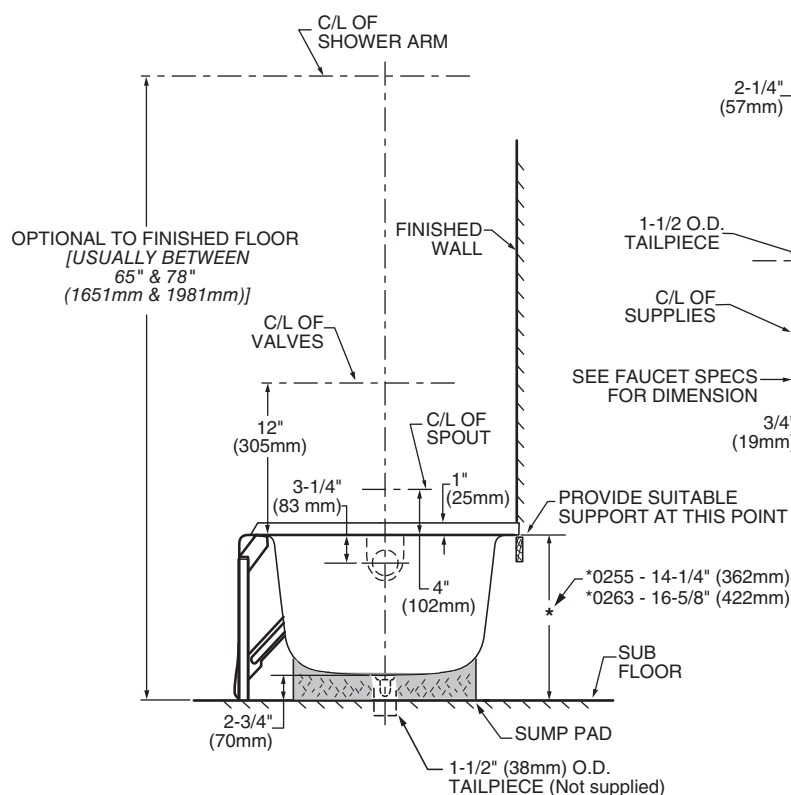
- Drywall Screw
- Teflon Tape
- Silicone Sealant
- Screwdriver

- Shims
- Bath/Shower Faucet
- Drain Assembly
- Wall Coverings, As Needed

1

ROUGH-IN DIMENSIONS

NOTE: Measurements may vary plus or minus 1/4" (6mm).

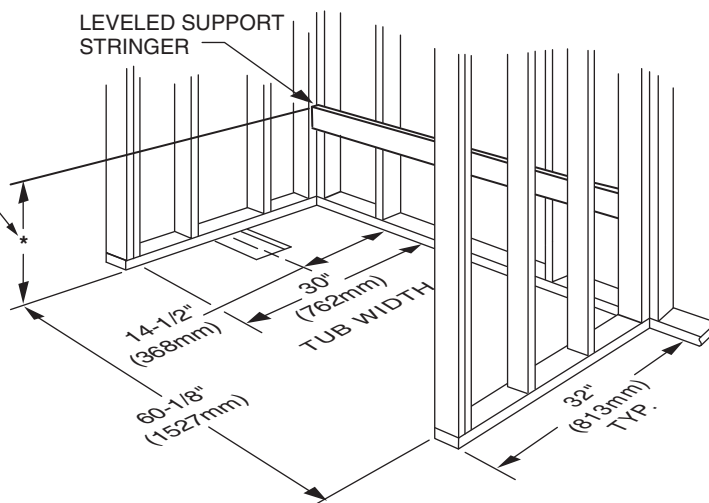


**LEFT HAND TUB ILLUSTRATED
RIGHT HAND TUB IS REVERSED**

DETERMINE FRAMING ROUGH-IN

Construct a recess using 2 x 4 construction designed for your particular installation. Allow for thickness of finished wall material.

*0255 - 14-1/4" (362mm)
*0263 - 16-5/8" (422mm)

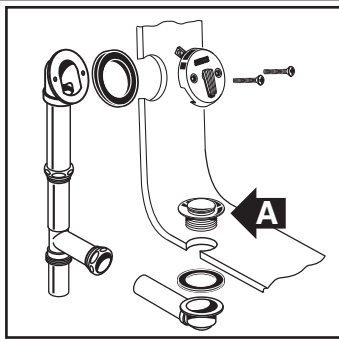


2

DRAIN

Install the overflow and drain assembly onto the tub per manufacturer's instructions.

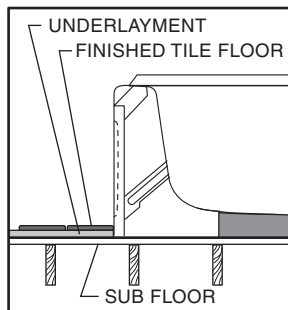
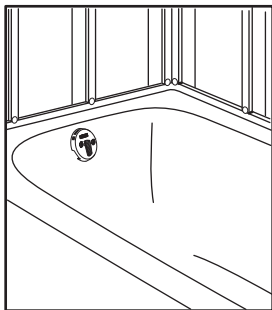
Be certain to apply a bead of putty on the underside of drain (part "A") in order to ensure a water tight seal between the tub and drain. Remove excess putty after installing drain on tub.



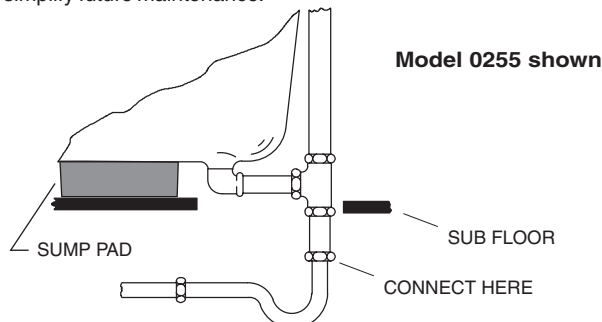
3

INSTALLATION

Position bathtub within the recess, check level, front to back, side to side. Also check drain clearance hole in sub floor. Insert the drain tailpiece into the trap.

**INSTALL PLUMBING****CAUTION: Risk of damage to bath bottom and sub floor.**

Ensure a watertight seal on all drain connections. When the bath is securely positioned, connect the drain to the trap. An access panel will simplify future maintenance.



Model 0255 shown

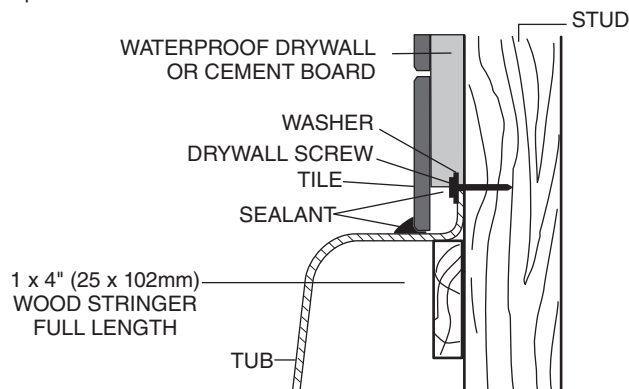
4

COMPLETE FINISH WALL**CAUTION: Risk of personal injury and product damage.**

Secure the bath to studs with wall bracket and screws as shown. Protect the bath surface. Cover the framing and walls with waterproof drywall or cement board.

Apply a bead of silicone sealant where the drywall meets the bath. Install the wall covering so it is 1/16" above the enameled surface. Install the finish wall material to the subwall. Use silicone sealant to seal the joints between the bath rim and the finish wall.

Install the finish floor. Apply silicone sealant along the edge of the bath apron.



5

IMPORTANT CONSUMER INFORMATION**HOUSEKEEPING RESPONSIBILITIES****DANGER: Improper maintenance or cleaners may permanently remove the glossy porcelain finish on American Standard bathtubs.****NOTE:**

DO NOT use steel wool, wire brushes, metal scrapers or abrasive sponge pads to clean a American Standard Bathtub.

DO NOT use high alkaline or strong acid cleaners.

DO NOT use abrasive cleaners.

Use only non-abrasive cleaners and a soft nylon brush to clean the surface. When using commercial cleaners, use cleaners with a pH of between three and eight.

Follow cleaner manufacturer instructions very carefully.

AS AMERICA, INC. ONE YEAR LIMITED WARRANTY

If inspection of this AS America, Inc. ("American Standard") plumbing product, within one year after its initial purchase, confirms that it is defective in materials or workmanship, American Standard will repair or, at its option, exchange the product for a similar model.

This limited warranty applies only to the original purchaser and installation of these products. In the event of a limited warranty claim, proof of purchase will be required—save sales receipt.

This limited warranty does not apply to local building code compliance. Since local building codes vary considerably, the purchaser of this product should check with a local building or plumbing contractor to insure local code compliance before installation.

This limited warranty is void if the product has been moved from its initial place of installation; if it has been subjected to faulty maintenance, abuse, misuse, accident or other damages; if it was not installed in accordance with American Standard's instructions; or if it has been modified in a manner inconsistent with the product as shipped by American Standard.

American Standard's option to repair or exchange the product under this limited warranty does not cover any labor or other costs of removal or installation. IN NO EVENT WILL AMERICAN STANDARD BE LIABLE FOR THE COST OF REPAIR OR REPLACEMENT OF ANY INSTALLATION MATERIALS, INCLUDING BUT NOT LIMITED TO, TILES, MARBLE, ETC. American Standard will not be responsible for any other incidental or consequential damages attributable to a product defect or to the repair or exchange of a defective product, all of which are expressly excluded from this limited warranty. This limited warranty does not cover any liability for consequential or incidental damages, all of which are hereby expressly disclaimed, or the extension beyond the duration of this limited warranty of any implied limited warranties, including those of merchantability or fitness for an intended purpose. (Some states or provinces do not allow the exclusion or limitation of implied limited warranties, so this exclusion may not apply to you.)

This limited warranty gives you specific legal rights. You may have other statutory rights that vary from state to state or from province to province, in which case this limited warranty does not affect such statutory rights.

In the United States:
American Standard Brands
P.O. Box 6820
Piscataway, New Jersey 08855
Attention: Director of Customer Care
For residents of the United States, warranty information may also be obtained by calling the following toll free number: (800) 442-1902
www.americanstandard.com

In Canada:
AS Canada, ULC
5900 Avebury Rd.
Mississauga, Ontario
Canada L5R 3M3
Toll Free: (800) 387-0369
www.americanstandard.ca

In Mexico:
American Standard B&K Mexico
S. de R.L. de C.V.
Via Morelos #330
Col. Santa Clara
Ecatepec 55540 Edo. Mexico
Toll Free: 01-800-839-1200
www.americanstandard.com.mx

THIS WARRANTY IS NOT TRANSFERABLE FROM ORIGINAL CONSUMER PURCHASER.