

*American Standard*

# Installation Instructions

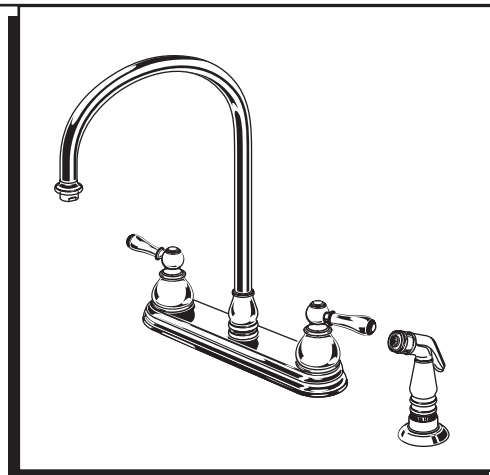
4771.222  
4771.322

## HAMPTON

### TOP MOUNT KITCHEN FAUCETS

*Thank you for selecting American-Standard...  
the benchmark of fine quality for over 100 years.*

*To ensure that your installation proceeds smoothly—  
please read these instructions carefully before you begin.*



Certified to comply with ANSI A112.18.1M  
U.S. Patent No. 5,819,789  
M968145 REV. 1.3

#### Required Tools



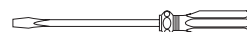
Channel Locks



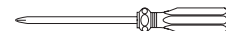
Adjustable Wrench



Plumbers' Putty or Caulking



Flat Blade Screwdriver



Phillips Screwdriver

## 1

### INSTALL FAUCET

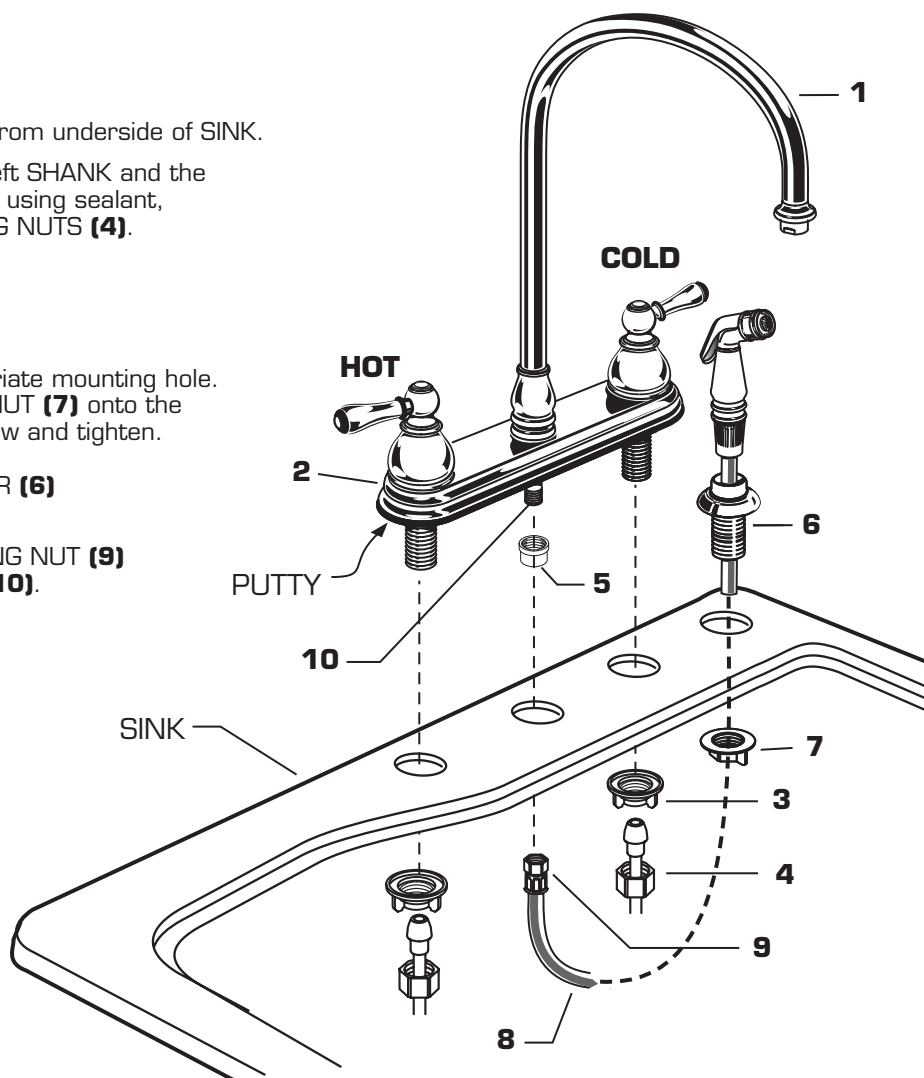
#### CAUTION

Turn off hot and cold water  
supplies before beginning.

- Screw SPOUT (1) onto BODY (2).
- Place faucet in position on sink.
- Assemble and tighten LOCKNUTS (3) from underside of SINK.
- Connect the HOT water supply to the left SHANK and the COLD water supply to the right SHANK using sealant, appropriate connectors, and COUPLING NUTS (4).

#### TO INSTALL SPRAY:

- Unscrew SPRAY CAP (5).
- Place the HOLDER (6) into the appropriate mounting hole. Assemble the SPRAY HOLDER WING NUT (7) onto the shank of SPRAY HOLDER (6) from below and tighten.
- Feed SPRAY HOSE (8) through HOLDER (6) so SPRAY sits in HOLDER (6).
- From underneath sink, attach COUPLING NUT (9) of SPRAY HOSE (8) to HOSE SHANK (10). Tighten COUPLING NUT (9) firmly.

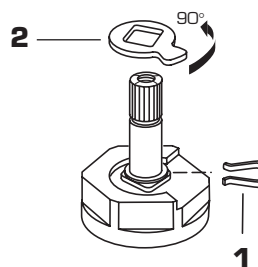


## 2 TEST INSTALLED FAUCET

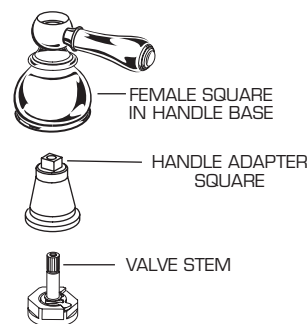
- Remove AERATOR.
- With handle in OFF position, turn on water supplies and check all connections for leaks.
- Operate both handles to flush water lines thoroughly.
- Operate SPRAY (if present).
- Turn handles into OFF position and replace AERATOR.

## 3 SERVICE

- To change direction of handle rotation, proceed as follows:
  - Turn valve to OFF position.
  - Pull out INDEX CAP and remove HANDLE SCREW.
  - Pull off HANDLE BASE and remove ADAPTER.
  - Remove SPRING CLIP **(1)**.
  - Lift STOP WASHER **(2)**, turn 90° and replace.
  - Replace SPRING CLIP **(1)**.
  - Reinstall HANDLE.
- AERATOR may accumulate dirt causing distorted and reduced water flow. Remove AERATOR and rinse clean.
- If spout drips, operate handles several times from OFF to ON position. Do not force - handles turn only 90°.



- Handle alignment.
- Check alignment, if not satisfactory aligned;
  - Push out ADAPTER carefully.
  - Turn ADAPTER either 45° or 90° so that male square on ADAPTER catches different female square in HANDLE BASE.
  - Assemble and tighten MOUNTING SCREW.
- Push INDEX CAP in top of HANDLE.



## 4 CARE INSTRUCTIONS:

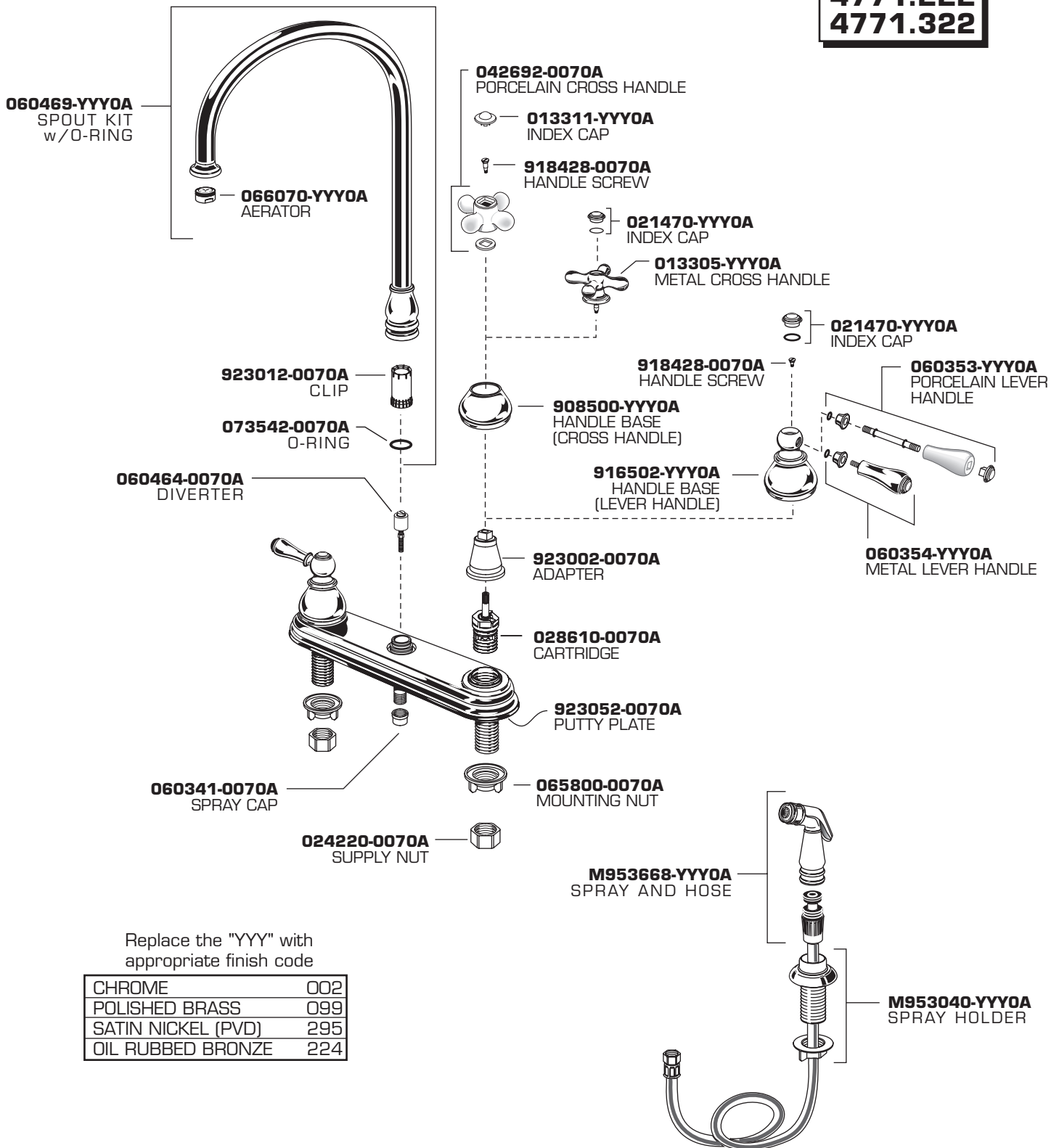
**DO: SIMPLY RINSE THE PRODUCT CLEAN WITH CLEAR WATER. DRY WITH A SOFT COTTON FLANNEL CLOTH.**  
**DO NOT: DO NOT CLEAN THE PRODUCT WITH SOAPS, ACID, POLISH, ABRASIVES, HARSH CLEANERS, OR A CLOTH WITH A COARSE SURFACE.**

# American Standard

## HAMPTON KITCHEN FAUCET

MODEL NUMBERS

**4771.222**  
**4771.322**



Replace the "YYY" with  
appropriate finish code

CHROME	002
POLISHED BRASS	099
SATIN NICKEL (PVD)	295
OIL RUBBED BRONZE	224

### HOT LINE FOR HELP

For toll-free information and answers to your questions, call:  
1-800-442-1902  
Weekdays 8:00 a.m. to 6:00 p.m. EST  
IN CANADA 1-800-367-0369 (TORONTO 1-905-306-1093)  
Weekdays 8:00 a.m. to 7:00 p.m. EST  
IN MEXICO 01-800-839-12-00



Product names listed herein are trademarks of American Standard Inc.  
© AS America, Inc. 2008

M968145 REV. 1.3