

M60

Linear Fluorescent Direct/Indirect
Pendant & Wall

se'lux®



Project: _____ **Type:** _____ **Qty:** _____

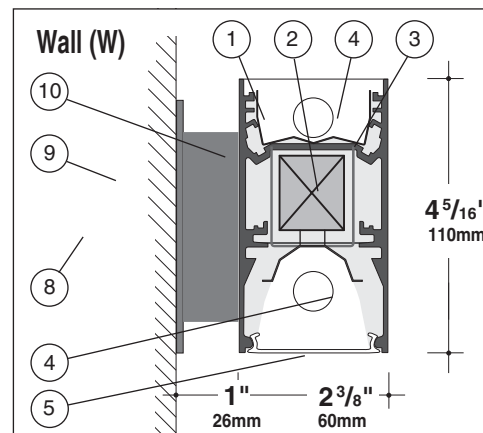
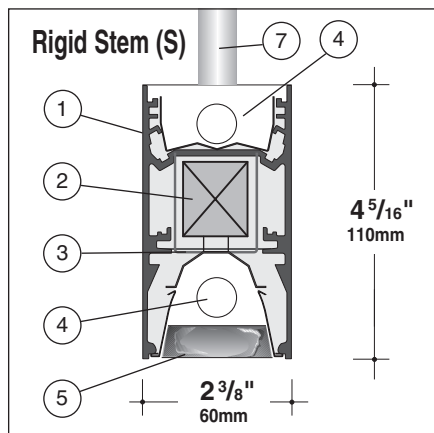
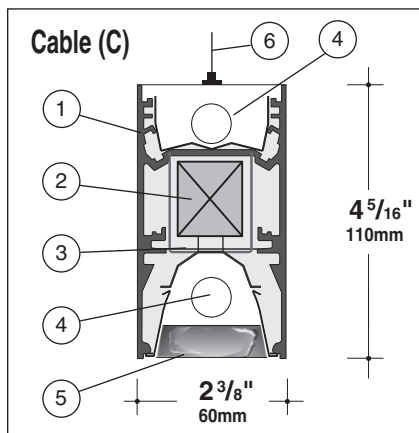
M6DI - - - - -
Fixture Series **Lamp Type** **Shielding** **Mounting** **Linear Footage** **Finish** **Voltage**
 - - - - -

Options (refer to separate data sheets for ordering codes and details)

Fixture Series	Lamp Type	Direct Shielding	Mounting	Linear Footage	Finish	Voltage	Options
M6DI M60 Direct/Indirect	2T5 2 x F28T5	MP Silky Specular Parabolic	C Cable	004 4 foot	WH White	120	(qty.) EM Stand-by Battery Pack ¹ (prefix quantity, i.e. - 5EM)
	2T5HO 2 x F54T5HO	SD Satine Lens	S Stem	008 8 foot	BK Black	277	FS Single Fusing
		OD Extra Diffuse Lens	RS Rigid Stem W Wall	012 12 foot	SV Silver SP Specify RAL#	347	DM Dimming ¹ (specify desired system) DMA Digital Addressable Dimming ¹ SI Satine Acrylic Inlay (for MP Louver only) Track Eutrac Standard ² DL Suitable for Damp locations Downlights (See MR11 spec sheet, pp.98)
				For other lengths/ configurations, indicate nominal length rounded to the next highest foot using three digits. Factory will supply layout drawings. Individual fixtures cannot be field joined.			
							Track insert including track available for all configurations, consult factory for details.

¹ Must be low profile ballasts (1 3/16" wide x 1 3/16" high); consult factory for details.

² Consult factory for details.



1. Housing - Continuous, 6063-T5 extruded aluminum profile up to 16 feet long.

2. Ballast - Electronic, high power factor, class "P", type "A" sound rating. Specify 120v, 277v, or 347v. Ballast is factory pre-wired with leads to one end of fixture. Consult factory for ballast options.

3. Gear Tray - Die formed tray with specular aluminum reflector. Gear tray installs as complete electrical unit and is held in place with 1/4 turn latches. It is fully accessible from below ceiling.

4. Lamps - As noted (by others). Other lamp lengths or wattages available; consult factory.

5. Shielding - Choose **MP** Silky Specular Parabolic aluminum louver, **SD** Satine Lens, and **OD**

Extra Diffuse Lens for direct shielding only.

6. 1/16" Aircraft Cable Suspension - Supplied with chrome gripper for easy adjustment. 48" max suspension from ceiling to top of luminaire. (See p.100 for more details.)

7. 5/8" Steel Swivel Stem or Rigid Stem Suspension - Swivel Stem provides 30° swivel rotation and can be cut in field; Rigid Stem is not field cut-able. 48" max suspension from ceiling to top of luminaire. (See p. 100 for details.)

8. Ø3/8" Threaded Rod - To anchor Wall Bracket supplied and installed by others.

9. Outlet box - (4" x 4") Supplied and installed by others at feed locations only.

10. Wall Bracket - Aluminum Wall Bracket provided nominally every 4'. See layout pages for details.

Interior Luminaire Finish - Standard interior colors are White (WH), Black (BK) and Silver (SV). RAL colors (SP) are available, please specify RAL#.

SELUX Corp. © 2006

TEL: (845) 691-7723

FAX: (845) 691-6749

www.selux.com/usa

M6DI-01 (v5.0)

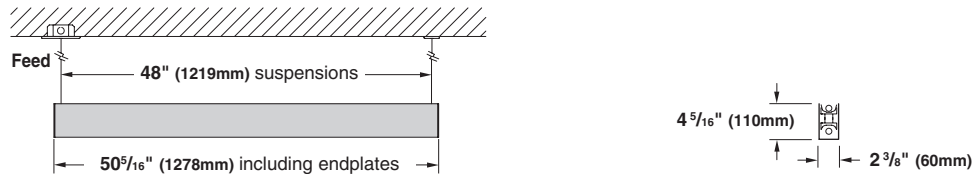


Union Made Affiliated
with IBEW Local 363

In a continuing effort to offer the best product possible, we reserve the right to change, without notice, specifications or materials that in our opinion will not alter the function of the product. Specification sheets found at www.selux.com/usa are the most recent versions and supercede all other printed or electronic versions.

M6DI Pendant Mount/Wall Standard Layout Dimensions

Nominal 4 foot Individual - side view



Nominal 4 foot Individual - top view



Nominal 8 foot Individual - top view

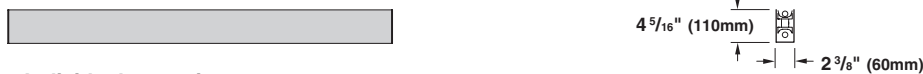


Nominal 12 foot Individual - top view

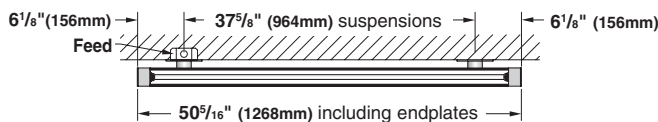


M6DI Wall Layout Dimensions (option - W)

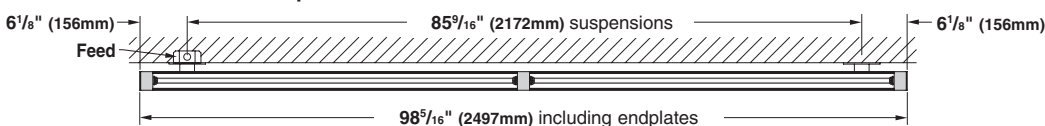
Nominal 4 foot Individual - side view



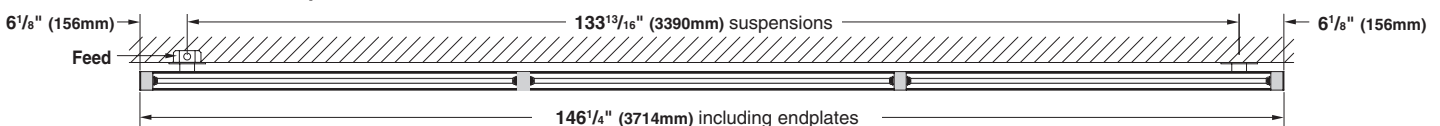
Nominal 4 foot Individual - top view



Nominal 8 foot Individual - top view



Nominal 12 foot Individual - top view



	T5 (1 or 2 lamp)		
	Including Endplates	Pendant Suspensions	Wall Suspensions
4 foot individual	50.31" (1278mm)	48.00" (1219mm)	37.59" (954mm)
8 foot individual	98.31" (2497mm)	96.00" (2438mm)	85.53" (2172mm)
12 foot individual	146.25" (3714mm)	144.00" (3658mm)	133.46" (3390mm)

For other lengths, lamping, continuous runs or configurations please specify overall length (in feet), accessories desired and sketch/drawing of configuration. SELUX will detail project drawings upon order and supply submittal drawings for approval. Individual fixtures cannot be field joined. If you have any questions please contact SELUX customer service or applications engineering for assistance (1-800-SELUX-CS).