

WaveWorks®

Casegoods



NATIONAL | Furniture with Personality®

WaveWorks captures the essence of imagination with a sea of choices, dynamic design, sustainable insight and unapparent affordability.



WaveWorks® Casegoods, Truffle and Wallaby Laminates, Softened Rim Profile, Horizon Pulls in Platinum Metallic, Pact Putty Epicenter® Tack/Slat Inserts, Momentum Riga Snowdrift Cushion
Exhibit™ Wall Rail Solution, Platinum Metallic Wall Rails and Slat Inserts, Pact Putty Tack Inserts
Universal Lectern and Media Wall, Truffle Finish
Mix-it® Task Seating, Momentum Cairns Opal
Mix-it® Mesh Back Stool Seating, Silica™ Alloy

WaveWorks. Fresh solutions for your entire organization.

Focus

The ever evolving private office demands versatility. From being supported by our Exhibit™ wall rail solution or going for the layered surface look, WaveWorks' designs transcend all tastes and functional preferences.

Collaborate

From touchdowns and impromptus, to the all day meetings, collaboration gets business done the right way. And, comfortable, appropriate, and technology enabled furnishings only enhance the effectiveness of collaboration

Interact

Whether one department or areas of open space, WaveWorks opens minds when wanting the benefits of a free flowing environment that still provides personal areas to get things done.

This all-inclusive casegood and table solution truly inspires with its infinite combinations of materials, finishes, rim profiles and pulls. WaveWorks offers a single line resource to accommodate all spaces and unique places across all industries and organizations. WaveWorks' combinability is not limited to just materials, it integrates with Epic™ and Renegade™ casegoods as well as the Epicenter® to achieve fit, feel, and budget. And WaveWorks maximizes space by utilizing the wall itself when paired with our Exhibit™ wall rail solution. Equally inspiring are WaveWorks' quality and sustainable attributes. WaveWorks earns level® 3 and SCS Indoor Advantage™ Gold certifications and is available with FSC® certified wood; all of which can contribute toward green building rating systems such as LEED®. What's more, WaveWorks' wood veneer features IntegraClear®, National's proprietary environmentally-friendly, water-based UV finish which offers exceptional durability and clarity enhancing the natural beauty of the wood. And, all finished wood surfaces from National are embedded with our Antimicrobial Silver Ion Technology to inhibit the growth and spread of harmful microbes.



Welcome

Yes, first impressions matter. Say everything you want to say about your organization without saying a word with WaveWorks.

Meet

From converted mail rooms to executive boards, WaveWorks accommodates with lustrous veneers or durable laminates with a full supporting cast of storage, media walls, buffets and lecterns as well as data and power conveniences.

Learn

Creating an environment that is conducive to soaking up information and flexible enough to move from a classroom setting to group interaction, WaveWorks does all this and more.

Private, open and everything in between; you can have it all from one series.



WaveWorks® Casegoods and Table, Autumn Finish, Step Rim Profile, Waterfall Pulls in Platinum Metallic, Tack Board in Pact Coastal
Aurora® Executive/Conference Seating, Spectrum Breeze
Aurora® Guest Seating, Spectrum Breeze, Autumn Finish

WaveWorks. Your imagination has no limits.



Wood



Wood and Glass



Wood, Glass and Laminate

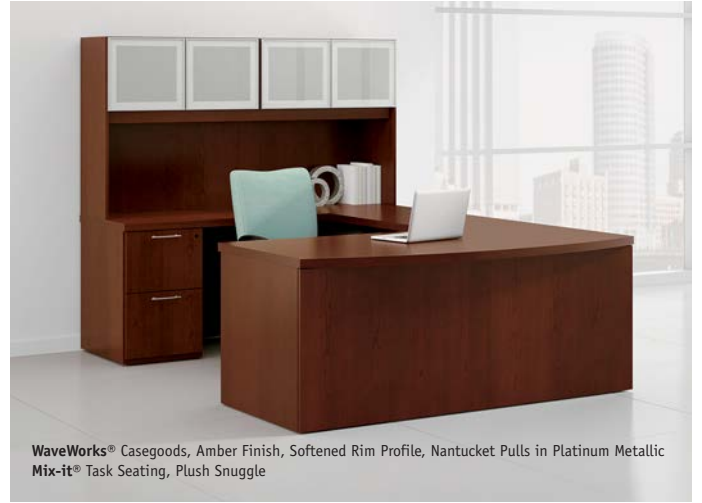
From grand impressions in the executive suite, to more pragmatic purposes for mid-level management, as well as the daily nuances of administrative spaces, application appropriate solutions can finally be accomplished by a single series. Rich hardwood veneers, stunning glass top ensembles, sleek metal coupled with durable laminates and thermofoils are all accentuated by limitless storage options. What's more, go vertical with an Exhibit and WaveWorks solution for a more economical office with stylish appeal. Plus, enjoy full capabilities for flexible, multi-user workstations for mobile work environments in semi-private and open settings from WaveWorks.







WaveWorks® Casegoods, Natural Finish, Reed Rim Profile, Newport Pulls in Platinum Metallic
 Exhibit™ Wall Rail Solution, Platinum Metallic Wall Rails and Slat Wall, Pact Coastal Tack Insert
 Aurora® Executive/Conference Seating, Silvertex™ White



WaveWorks® Casegoods, Amber Finish, Softened Rim Profile, Nantucket Pulls in Platinum Metallic
 Mix-it® Task Seating, Plush Snuggle

Private and focused, yet so open and inviting. That's the nature of WaveWorks.



WaveWorks® Casegoods, Wallaby Paint and Mocha Laminate, Softened Rim Profile,
 Malibu Pulls in Platinum Metallic, Tack Board in Dune Basin, Cushion in Stinson Pacifica High Tide
 Aurora® Executive/Conference Seating, Maharam Tread Macaw

You, a wall and WaveWorks... creativity and efficiency unleashed.



WaveWorks® Casegoods, Natural Laminate, Softened Rim Profile, Level Pulls in Satin Nickel Metallic
Exhibit™ Wall Rail Solution, Satin Nickel Metallic Wall Rails and Slat Insert, Repetition Almond Tack Inserts
Respect® Executive/Conference Seating, Silvertex™ Celery



Attach Exhibit™ wall rails to structural walls.



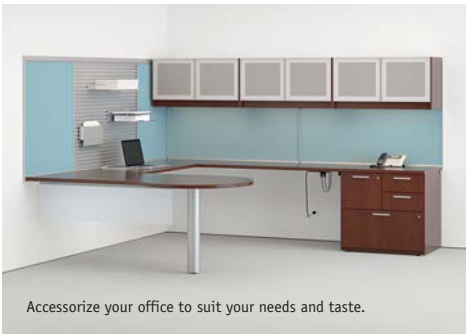
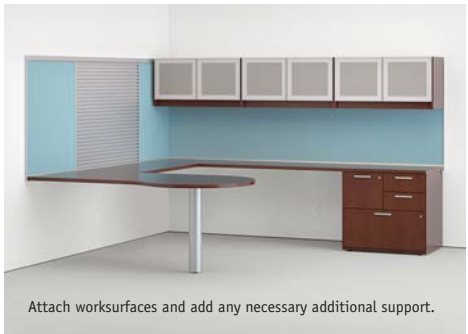
Insert desired tack boards, slat inserts and marker boards.



Hang overhead cabinets from upper wall rails.



How can WaveWorks become even more versatile? Match it with our Exhibit™ wall rail solution. It removes barriers and transforms the walls into purposeful design elements offering a variety of solutions for all workplace, collaborative and social environments. Exhibit's wall rail solution supports WaveWorks worksurfaces and overhead cabinets, which can be positioned anywhere along the rail. The rail, along with tackable and marker board inserts, can be field scribed for a custom fit without the custom price. Exhibit allows the walls to do the "heavy lifting" creating a lighter, airier aesthetic while providing easy access to electrical and data and the opportunity for natural light to permeate further.







WaveWorks® Casegoods, Designer White Laminate, Softened Rim Profile
 Exhibit™ Wall Rail Solution, Platinum Metallic Wall Rails, Pact Azure Tack Inserts
 Mix-it® Mesh Back Task Seating, Silica™ Tropic



WaveWorks® Casegoods, Truffle and Designer White Laminates, Softened Rim Profile, Crescent Pulls in Platinum Metallic
 Exhibit™ Wall Rail Solution, Platinum Metallic Wall Rails and Slat Insert, Pact Fern Tack Inserts
 Cinch® Task and Stacking Seating, Marshmallow and Big City Dublin



WaveWorks® Casegoods, Mocha Finish and Designer White Laminate, Softened Rim Profile, Allure Pulls in Platinum Metallic
 Exhibit™ Wall Rail Solution, Platinum Metallic Wall Rails and Slat Inserts, Pact Coastal Tack Inserts
 Aurora® Executive/Conference Seating, Spectrum Breeze
 Aurora® Guest Seating, Spectrum Breeze, Mocha Finish

Open your mind, power up and let's move mountains.



WaveWorks® Casegoods, Shadow and Designer White Laminates, Softened Rim Profile, Horizon Pulls in Platinum Metallic, Plush Snuggle Cushions, Frosted Resin Privacy Screens
Fuel® Task and Stool Seating, Momentum Amuse Quartz



WaveWorks® Casegoods, Satin Nickel Metallic Paint and Designer White Laminate, Softened Rim Profile, Malibu Pulls in Satin Nickel Metallic, Tack Boards in Pact Putty
Gotcha™ Task Seating, Maharam Venn Sundial



WaveWorks® Casegoods and Adjustable Height Tables, Caramel and Cloud Laminates, Softened Rim Profile, Repetition Tawny Epicenter® Tack/Slat Inserts
 Fuel® Task Seating, Jacks Frost

It shouldn't require reserving a conference room to touchdown and share ideas. Collaboration should have the opportunity to happen on the fly without impeding the individual work of neighbors. And, open spaces can be expansive or a nook in the corner; this is where WaveWorks' scalability and versatility comes in very handy. Layered surfaces, mobility and an array of shapes, angles and contours promote teamwork and productivity when people work towards group and personal responsibilities. Using the Epicenter with WaveWorks provides the power you need for your devices, along with organizational tools to keep workstations nice and tidy. Plus, more storage and worksurface sizes accommodate tighter footprints without sacrificing the space you need to work and store your treasures.



WaveWorks® Casegoods, Platinum Metallic Paint and Mocha Laminate, Softened Rim Profile
 Chameleon™ Dividers, Clear Polycarbonate with Platinum Metallic Frames
 Fuel® Intensive Use Task Seating, Twilight Ocean



WaveWorks® Casegoods, Designer White and Mocha Laminates, Softened Rim Profile, Marina Pulls in Platinum Metallic, Mobile Pedestal Cushions in Spectrum Navy
 Exhibit™ Wall Rail Solution, Platinum Metallic Wall Rails, Pact Dove Tack Inserts
 Mix-it® Task Seating, Spectrum Navy



WaveWorks® Casegoods, Natural and Antique White Laminates, Softened Rim Profile, Repetition Reed Epicenter® Tack/Slat Inserts
 Epic™ Overhead Storage Cabinets, Frosted Resin Sliding Doors
 Mix-it® Task Seating, Momentum Inner Circle Boardroom
 Pennant™ Lounge Seating, Echo Limestone
 Swift™ Bench Seating and Occasional Tables, Echo Limestone, Natural Finish

Benching, pods, quads and standing workstations; work the way you work best.



WaveWorks® Casegoods and Adjustable Height Tables, Designer White Laminate, Softened Rim Profile, Dune Drift Epicenter® Tack/Slat Inserts, Frosted Resin Privacy Screens
 Epicenter® Single-sided Overhead Storage Cabinets, Frosted Resin Sliding Doors
 Mix-it® Mesh Back Stool Seating, Momentum Estrella Stone



WaveWorks® Caseloads, Brighton and Designer White Laminates, Softened Rim Profile, Horizon Pulls in Platinum Metallic, Off White Felt Privacy Screens, Cushions in Momentum Scan Ondine, Pact Dove Epicenter® Tack Inserts
 Exhibit™ Wall Rail Solution, Platinum Metallic Wall Rails, Pact Coastal Tack Inserts
 Mix-it® Mesh Back Task Seating, Momentum Expo Oasis

The way teams work is ever-evolving; therefore, the places they work must be flexible to the task or project at hand. WaveWorks coupled with the Epicenter can provide an array of settings that blend to the work that needs to get done and the next big ideas to keep your organization moving forward. Utilizing a single-sided Epicenter allows you to create a pathway or work area in open spaces. Whether healthcare, education, small business or big business, everyone has unique, intricate needs; and this is where WaveWorks delivers simple installations in what seems to require something much more complex. That's the beauty of engaging a casegood series with an extensive line of configurability and integration along with a manufacturer that can offer product modifications to make your space adaptable to your needs.



WaveWorks® Caseloads, Autumn Finish and Designer White Laminate, Softened Wood Rim Profile, Repetition Almond Epicenter® Tack Inserts, Frosted Resin Privacy Screens
 Triumph® Executive/Conference Seating, Maharam Disperse Chalk



WaveWorks® Casegoods, Natural and Designer White Laminates, Softened Rim Profile, Ting Ting Resin Privacy Screens
 Mix-it® Mesh Back Task Seating, Maharam Octave Crisp
 Upwards™ Stacking Seating, Dove



WaveWorks® Casegoods, Caramel Finish, Softened Rim Profile, Balance Pulls in Satin Nickel Metallic,
 Cushions in Maharam Anagram Electric Ondine, Tack Boards in Pact Fern
 Aurora® Executive/Conference Seating, Maharam Anagram Electric
 Swift™ Lounge Seating, Maharam Anagram Electric and Maharam Medium Artichoke

Great spaces can promote great cultures.



WaveWorks® Caseloads, Truffle and Wallaby Laminates, Reed Rim Profile, Horizon Putts in Platinum Metallic, Pact Putty Epicenter® Tack/Slat Inserts, Momentum Riga Snowdrift Cushions
Exhibit™ Wall Rail Solution, Platinum Metallic Wall Rails and Slat Inserts, Pact Putty Tack Inserts
Mix-it® Task Seating, Momentum Cairns Opal
Mix-it® Mesh Back Task Seating, Silica™ Alloy



WaveWorks® Caseloads, Mocha Finish and Designer White Laminate, Softened Rim Profile, Nantucket Pulls in Platinum Metallic
 Eloquence® Executive/Conference Seating, Twilight Goldrush
 Timberlane™ Tables and Guest, Bariatric and Tandem Seating, Twilight Goldrush, Mocha Finish

A WaveWorks welcome offers an invitation that tells people that you care about your organization and you want them to be comfortable. From simple to elegant, WaveWorks' variety of materials and finish combinations enable you to create the reception area your space needs for sufficient flow and the desired level of interaction access. With ADA compliant units and an extensive line of complementary seating, including lounge, tandem, ganging and bariatric, and Exhibit's wall rail capabilities, WaveWorks creates the perfect welcoming committee for your organization. To add a personal touch to your space, we offer laser engraving on glass and veneer vertical panels.



WaveWorks® Caseloads, Acorn and Wallaby Laminates, Softened Rim Profile
 Triumph® Executive/Conference Seating, Flock Sky
 Fringe™ Lounge Seating, Maharam-Wool Striae 006 and Flock Sky, Platinum Metallic
 Staccato™ Occasional Table, Acorn Laminate, Platinum Metallic



WaveWorks® Caseloads, Truffle Finish, Softened Rim Profile
 Aurora® Executive/Conference Seating, Maharam Quick Chili
 Swift™ Lounge Seating, Maharam Quick Chili and Maharam Anagram Range
 Pegos™ Occasional Tables, Truffle Finish and Platinum Metallic



WaveWorks® Caseloads, Satin Bronze Metallic Paint and Sable Laminate, Softened Rim Profile
 Aurora® Executive/Conference Seating, Stinson Insignia Crimson



WaveWorks® Caseloads, Patisander and Designer White Laminates, Softened Rim Profile,
 Balance Pulls in Platinum Metallic
 Exhibit™ Wall Rail Solution, Platinum Metallic Wall Rats, Patisander Laminate Shelf Inserts
 Aurora® Executive/Conference Seating, Showcase Cream

There are so many reasons to get together on a daily basis and most involve doing things better. WaveWorks' solutions provide the ideal environment for people to collaborate, learn, or provide an executive briefing. Regardless of the agenda, WaveWorks tables, media components and storage options offer the flexibility to adjust to the groups' needs. From boat-shaped to racetrack and café height to flip/nest capabilities, no matter how you set your table, WaveWorks' compatibility with today's technologies plays its part in keeping meetings moving along. Deluxe and basic lecterns, carts and an array of seating selections complete your conference and training space to ensure attendees are comfortable and prepared.



WaveWorks® Conference Table and Casegoods, Autumn Finish, Reed Rim Profile, Malibu Pulls in Platinum Metallic
Universal Deluxe Lectern and Media Wall, Autumn Finish
Aurora® Executive/Conference Seating, Promessa Fields



WaveWorks® Flip/Nest Tables, Caramel Finish, Softened Rim Profile
Jiminy® Nesting Seating, Arc-Com Pinpoint Sky



WaveWorks® Flip/Nest Tables, Designer White Thermofoil
Tag® Stacking Seating, Silververtex™ Celery and Connect Four Lime



WaveWorks® Conference Table and Casegoods, Autumn Finish and Wallaby Laminate, Softened Rim Profile, Bar Pulls in Platinum Metallic
 Universal Media Wall, Wallaby Laminate
 Mix-it® Task Seating, Promessa Moss



WaveWorks® Tables, Natural Laminate, Softened Rim Profile, Cinder Four Star Bases
 WaveWorks® Flip/Nest Table, Natural Laminate, Frosted Resin Modesty Panel
 Universal Set-on Surface Lectern, Natural Laminate
 Exhibit™ Wall Rail Solution, Cinder Wall Rails, Pact Azure Tack Inserts
 Jiminy® Nesting Seating, Maharam Alloy Rave

Vertical Storage Cabinets



Entertainment Cabinet (Shown with Double Door Unit), Storage/Wardrobe with File/File Pedestal, Double Wardrobe/Storage Cabinet, Storage Cabinet with File/File Pedestal, Storage Side Bookcase/Wardrobe with File/File Pedestal, Wardrobe/Storage Cabinet, and Storage/Lateral File Cabinet

Wardrobe/Storage Cabinet: Wood veneer or laminate chassis; Wood veneer, laminate or glass doors; Double door and single door models; Double door models feature coat rod on one side and shelves on the other, or all shelves; Single door models feature coat rod and removable shelves; Left or right hinged; Locking wood or laminate doors; Non-locking glass doors; Available in 68", 69", 79" and 80" heights

Media Storage Tower: Wood veneer or laminate chassis; Wood veneer, laminate or glass doors; Locking wood or laminate doors; Non-locking glass doors; Left hinged and right hinged models; Shortened shelves allow for easy wire access in back of cabinet; Grommets in end panels for wire access; 80" tall

Entertainment Cabinet: Use with Double Door Unit or Multi-File Storage Cabinet; Wood veneer or laminate chassis; Wood veneer, laminate or glass doors; Locking wood/laminate doors; Non-locking glass doors; Fixed shelf accommodates televisions and media components; Black fabric tack boards inside wood/laminate doors; For set on surface applications; Grommets in back panel for wire access and venting; Available in 38" and 50" heights

Storage/Lateral File Cabinet: Wood veneer or laminate chassis; Wood veneer, laminate or glass doors; Locking wood or laminate doors; Non-locking glass doors; Storage cabinet with shelves; Two locking lateral file drawers; Available in 68", 69", 79" and 80" heights

Storage Cabinet with File/File Pedestal: Wood veneer or laminate chassis; Wood veneer, laminate or glass doors; Metal chassis with metal doors/drawers; Locking wood, laminate or metal doors; Non-locking glass doors; Left hinged and right hinged models; Storage cabinet with shelves; Two locking file drawers; Wood/laminate models available in 68", 69", 79" and 80" heights; Metal models available in 54" and 66" heights

Storage/Wardrobe with File/File Pedestal: Wood veneer or laminate chassis; Wood veneer or laminate doors/drawers; Metal chassis with metal doors/drawers; Locking wood, laminate or metal doors; Left hinged and right hinged models; Wardrobe with removable coat rod; Storage cabinet with shelves; Two locking file drawers; Wood/laminate models available in 68", 69", 79" and 80" heights; Metal models available in 54" and 66" heights

Storage Side Bookcase/Wardrobe with File/File Pedestal: Wood veneer or laminate chassis; Wood veneer or laminate doors/drawers; Metal chassis with metal doors/drawers; Locking wood, laminate or metal doors; Left hinged and right hinged models; Wardrobe with removable coat rod; Bookcase; Two locking file drawers; Wood/laminate models available in 68", 69", 79" and 80" heights; Metal models available in 54" and 66" heights

Storage Credenzas



Buffet Credenza, Storage Credenza and Lateral File Credenza



Entertainment Credenza and Media Storage Credenza

Buffet Credenza: Wood veneer or laminate tops and chassis; $1\frac{3}{16}$ " or $1\frac{3}{8}$ " top thickness; Two locking cabinets and two non-locking drawers; 72" wide

Storage Credenza: Wood veneer or laminate tops and chassis; $1\frac{9}{16}$ " or $1\frac{3}{8}$ " top thickness; Four locking file drawers and one locking cabinet; Available in 60", 66" and 72" widths

Lateral File Credenza: Wood veneer or laminate tops and chassis; $1\frac{9}{16}$ " or $1\frac{3}{8}$ " top thickness; Four locking file drawers; 72" wide

Entertainment Credenza: Wood veneer or laminate tops and chassis; $1\frac{9}{16}$ " or $1\frac{3}{8}$ " top thickness; Two locking cabinets and two non-locking drawers; Cut-outs in back panel for wire access and venting; 72" wide

Media Storage Credenza: Wood veneer or laminate tops and chassis; $1\frac{9}{16}$ " top thickness; Two locking cabinets and two non-locking drawers; Infrared Repeater allows media components to be controlled while inside cabinet; Grommets in end panels for wire access; Cut-outs in back panel for wire access and venting; Available in 48", 60" and 72" widths

Lateral Files



Metal Five Drawer Lateral File with Recessed Door

Metal Five Drawer Lateral File

Wood/Laminate Four Drawer Lateral File

Metal Four Drawer Lateral File

Wood/Laminate Three Drawer Lateral File

Metal Three Drawer Lateral File

Wood/Laminate Two Drawer Lateral File

Metal Two Drawer Lateral File

Metal Five Drawer Lateral File with Recessed Door: 22-gauge steel; Four lateral file drawers and one recessed door; Standard locking; Letter and legal side-to-side filing; Available in 30", 36" and 42" widths

Metal Two, Three, Four and Five Drawer Lateral Files: 22-gauge steel; Standard locking; Letter and legal side-to-side filing; Available in 30", 36" and 42" widths

Wood/Laminate Two, Three and Four Drawer Lateral Files: Wood veneer or laminate; 1 9/16" or 1 3/16" top thickness; Standard locking; Letter, legal and EDP front-to-back or side-to-side filing; 36" wide

Bookcases



Bookcase with Doors

Storage Bookcase with File/File Pedestal

Wood/Laminate Open Bookcases

Metal Open Bookcases

Set-On-Surface Bookcase (Shown with Two Drawer Lateral File)

Bookcase with Doors: Wood veneer or laminate; Locking storage cabinet; Fixed and adjustable shelves; Available in 53", 68", 69", 79" and 80" heights

Storage Bookcase with File/File Pedestal: Wood veneer or laminate; Two locking lateral file drawers; Fixed and adjustable shelves; Available in 53", 68", 69", 79" and 80" heights

Wood/Laminate Open Bookcase: Wood veneer or laminate; One, two, three, four and five shelf models; Fixed and adjustable shelves; 36" wide

Metal Open Bookcase: 22-gauge steel; Two, three and four shelf models; Adjustable shelves; 36" wide

Set-On Surface Bookcase: Wood veneer or laminate; Wood, laminate and glass doors or open (no doors); Locking wood/laminate doors; Non-locking glass doors; For set on surface applications; Available in 38" and 50" heights and 15", 18", 30" and 36" widths

Mobile Carts, Pedestals and Nesting Tables



Mobile Utility Cart

Mobile Computer Cart

Mobile Pedestals

Nesting Tables

Mobile Utility Cart: Wood veneer or laminate; 1 9/16" or 1 3/16" top thickness; Locking cabinet with shelves; Dual wheel casters; Grommet option available in top for wire access

Mobile Computer Cart: Wood veneer or laminate; Sliding keyboard/mouse tray; CPU shelf; Power Director for power/data access; Grommet in top and Mesh Cord Manager for wire access; Dual wheel casters

Mobile Pedestal Box/File: Wood veneer or laminate; Black organizer tray; Locking box and file drawers; Dual wheel casters

Mobile Pedestal File/File: Wood veneer or laminate; Black organizer tray; Exposed, easy access filing; One locking file drawer; Dual wheel casters

Mobile Pedestal Cushion Top: Wood veneer, laminate or metal; Cushion top available in all National® and alliance partner fabrics; Locking box and file drawers; Dual wheel casters

Mobile Pedestal Box/File with Top: Wood veneer or laminate; Locking box and file drawers; Dual wheel casters

Nesting Tables: Slides underneath standard height worksurface; Kidney or convex shaped; Wood veneer or laminate; Four metal legs with dual wheel locking casters; 26 3/4" tall

Chassis



Hardwood Veneer Chassis



Laminate Chassis



Metal Chassis

Hardwood Veneer Chassis: Fully finished back panels; Wood or glass doors

Laminate Chassis: Fully finished back panels; Laminate drawer fronts on assembled models; Hardwood veneer or laminate drawer front option on component models; Wood, laminate or glass doors

Metal Chassis: 22 gauge steel outer chassis with 20 gauge steel inner components; Powder coated electrostatic paint

Doors and Drawers



Hardwood Veneer Door and Drawer Fronts



Laminate Door and Drawer Fronts



Metal Door and Drawer Fronts



Glass Doors

Hardwood Veneer Doors/Drawers: For use on wood or laminate chassis

Laminate Doors/Drawers: For laminate chassis only

Metal Doors/Drawers: For metal chassis only; 22 gauge steel; Powder coated electrostatic paint

Glass Doors: Option for wood or laminate upper storage components; Frosted glass with aluminum frame

Worksurfaces



Hardwood Veneer Worksurfaces



1 9/16" Thickness



1 3/16" Thickness



Laminate Worksurfaces



1 9/16" Thickness



1 3/16" Thickness



Thermofoil Worksurfaces



1 7/16" Thickness

Hardwood Veneer Worksurfaces: For use on wood veneer chassis or as a component top; 1 9/16" or 1 3/16" top thickness; Standard or matte/satin sheen; Concave, Cove, Reed, Softened, Step or Zip wood rim profile options

Laminate Worksurfaces: For use on laminate chassis or as a component top; Laminate worksurface with a wood rim available on wood chassis or as a component top; 1 9/16" or 1 3/16" top thickness; Concave, Cove, Reed, Softened, Step or Zip wood rim profile options; Reed or Softened PVC rim profile options

Thermofoil Worksurfaces: For use as a component top only; 1 3/16" top thickness

Rim Profiles



Concave Wood



Cove Wood



Step Wood



Zip Wood



Reed Wood



Reed PVC



Softened Wood



Softened PVC

Wood Rim Profiles: For use on wood or laminate worksurfaces
PVC Rim Profiles: For use on laminate worksurfaces only; 3mm PVC

Modesty Panels



Hardwood Veneer Full Height Modesty Panel



Laminate Full Height Modesty Panel



Metal Full Height Modesty Panel



Hardwood Veneer 1/3 Height Modesty Panel



Laminate 1/3 Height Modesty Panel



Metal 1/3 Height Modesty Panel



Resin 1/3 Height Modesty Panel, Rectangular



Resin 1/3 Height Modesty Panel, Tapered

Hardwood Veneer Modesty Panel: Available for use with component worksurfaces; Full overlay modesty or kneespace modesty options; Grain direction runs vertically
Laminate Full Height Modesty Panel: Available for use with component worksurfaces; Full overlay modesty or kneespace modesty options
Metal Full Height Modesty Panel: For use with metal components only; Full overlay modesty or kneespace modesty options
Hardwood Veneer 1/3 Height Modesty Panel: For use with component worksurfaces; Grain direction runs vertically
Laminate 1/3 Height Modesty Panel: For use with component worksurfaces
Metal 1/3 Height Modesty Panel: For use with U-shaped, P-shaped, rectangular and tapered worksurfaces; Features an embossed square design
Resin 1/3 Height Modesty Panel: For use with U-shaped, P-shaped, rectangular and tapered worksurfaces; Rectangular or tapered

Support Bases



Wood Half Support Base



Wood Round Support Base



Round Support Bases



Square Support Bases



Disc Support Base



Soft Square Disc Support Base



H-Style Support Base



U-Style Support Base



U-Style Support with Resin Insert



U-Style Support with Metal Insert



U-Style Support with Veneer Insert



Double Depth Support Base



Double Depth Support with Resin Insert



Double Depth Support with Metal Insert



Double Depth Support with Veneer Insert

Wood Half Support Base: Use with U-shaped and P-shaped worksurfaces

Wood Round Support Base: Use with U-shaped, P-shaped, rectangle and tapered worksurfaces; 4" diameter

Round Support Bases: Use with U-shaped, P-shaped, rectangle and tapered worksurfaces; Available in 4", 3" and 2" diameters (3" diameter available in counter and bar heights)

Square Support Bases: Use with U-shaped, P-shaped, rectangle and tapered worksurfaces; Available in 3" and 2" widths (3" diameter available in counter and bar heights)

Disc Support Bases: Use with U-shaped, P-shaped, rectangle and tapered worksurfaces and round component tops; Available in occasional table height as well as worksurface, bar and counter heights

Soft Square Support Bases: Use with U-shaped, P-shaped, rectangle and tapered worksurfaces and square component tops; Available in occasional table height as well as worksurface, bar and counter heights

H-Style Support Bases: Use with rectangle or tapered worksurfaces; Base kits available for table desks; Available in 24", 30" and 36" widths; Worksurface, bar and counter heights

U-Style Support Bases: Use with rectangle or tapered worksurfaces; Base kits available for table desks; Available in 24", 30" and 36" widths; Worksurface, bar and counter heights; Available with resin, metal or veneer insert

Double Depth Support Bases: Can be used to support the Epicenter® and surfaces; Available in 48" and 60" widths; Available with resin, metal or veneer insert

Adjustable Height Bases



Adjustable Height Column Pin Leg (Static)



Adjustable Height Column Pin Leg (Mobile)



Adjustable Height C-Leg



Electric Adjustable Height Base



Manual (Hand Crank) Adjustable Height Base



Adjustable Height "L" Base



Adjustable Height Mobile X Base

Adjustable Height Column Pin Leg: For use with component worksurfaces; Static or mobile (locking casters); Manual height adjustment; Push pins allows for manual up/down adjustment; Static base adjusts 4 7/8" in height; Mobile base adjusts 7 7/8" in height

Adjustable Height Static C-Leg: For use with component worksurfaces; Manual height adjustment; Push pins allows for manual up/down adjustment; Base adjusts 9" in height

Adjustable Height Base: For use with 24" and 30" deep rectangle and concave worksurfaces; Manual or electric height adjustment; Hand crank handle allows for manual up/down adjustment; One touch button allows for electric up/down adjustment; Base adjusts 18 7/8" in height

Adjustable Height "L" Base: For use with extended corner and rectangular worksurfaces for 90 degree capabilities; Manual or electric height adjustment; Hand crank handle allows for manual up/down adjustment; One touch button allows for electric up/down adjustment; Base adjusts 18 7/8" in height

Adjustable Height Mobile X Base: For use with component worksurfaces; Paddle height adjustment; Base adjusts 16 7/8" in height

Highback Organizers



Glass Doors

Wood/Laminate Doors

Open

Open, Curved Shelves



Wood/Laminate Doors, Curved Shelves

Corner, Glass Doors

Corner, Wood/Laminate Doors

Corner, Open

Storage Module Shelf

Glass Door Organizer: Sits on worksurface; Frosted glass doors with aluminum frames; Non-locking; Available in 38" and 50" heights; Available in 48" width (three doors), 60", 66", 72", 78" and 84" widths (four doors), 90", 96", 102" and 108" widths (six doors)

Wood/Laminate Door Organizer: Sits on worksurface; Locking; Available in 38" and 50" heights; Available in 48" width (three doors), 60", 66", 72", 78" and 84" widths (four doors), 90", 96", 102" and 108" widths (six doors)

Wood/Laminate Door Organizer with Curved Shelves: Sits on worksurface; Features four curved shelves and partially open back; Locking; Available in 48" width (three doors) and 60", 66" and 72" widths (four doors)

Open Organizer: Sits on worksurface; Wood or laminate; Available in 18" and 30" heights; Available in 30", 36", 42" and 48" widths

Open Organizer with Curved Shelves: Sits on worksurface; Features four curved shelves and partially open back; Available in 48", 60", 66" and 72" widths

Glass Door Corner Organizer: Sits on worksurface; Frosted glass doors with aluminum frames; Non-locking; Available in 38" and 50" heights

Wood/Laminate Door Corner Organizer: Sits on worksurface; Locking; Available in 38" and 50" heights

Open Corner Organizer: Sits on worksurface; Available in 38" height

Storage Module Shelf: Sits on worksurface; Wood or laminate; Horizontal and vertical dividers; Available in 48", 60", 66" and 72" widths

Wall Mount Overhead Storage Cabinets



Glass Doors

Wood/Laminate Doors

Open

Glass Door Cabinet: Attaches to wall; Frosted glass doors with aluminum frames; Non-locking; Available in 18" and 30" heights; 30" and 36" (two doors) and 42" and 48" widths (three doors)

Wood/Laminate Cabinet: Attaches to wall; Locking; Available in 18" and 30" heights; Available in 30" and 36" widths (two doors) and 42" and 48" widths (three doors)

Open Cabinet: Attaches to wall; Wood or laminate cabinet; Optional center divider panel; Available in 18" and 30" heights; Removable shelf; Available in 30", 36", 42" and 48" widths

Exhibit™ Mount Overhead Storage Cabinets



Glass Doors

Wood/Laminate Doors

Open

Glass Door Cabinet: Attaches to Exhibit™ upper rails; Frosted glass doors with aluminum frames; Non-locking; Available in 18" and 30" heights; 30" and 36" (two doors) and 42" and 48" widths (three doors)

Wood/Laminate Cabinet: Attaches to Exhibit™ upper rails; Locking; Available in 18" and 30" heights; Available in 30" and 36" widths (two doors) and 42" and 48" widths (three doors)

Open Cabinet: Attaches to Exhibit™ upper rails; Wood or laminate cabinet; Optional center divider panel; Available in 18" and 30" heights; ; Removable shelf; Available in 30", 36", 42" and 48" widths

Accessories



Organizing Stacker (Shown with Two)



Vertical Pigeon Hole Storage



Tack Board



Slat Wall



Cushion

Organizing Stacker: Can be added within an overhead storage cabinet, highback organizer or bookcase; Use alone or stack multiple units; Available in a variety of widths; Wood or laminate

Vertical Pigeon Hole Storage: For use under highback organizer; Sits on worksurface; Features three fixed shelves

Tack Board: Mounts onto back panel of Highback Organizer or to wall; Available in Dune (Grade A), Repetition (Grade A) and Pact (Grade B) tack board fabrics as well as COM

Slat Wall: Horizontal slats provide vertical surface for hanging plastic work tools; Mounts onto wall or to WaveWorks® highback organizer with curved shelves; Black plastic with black tackable area

Cushion: To be used with lower height pedestals to provide additional bench-like seating; Features an anti-skid backer; Available in all National®, COM and alliance partner fabrics

Privacy Screens



Freestanding Resin, Rectangular or Tapered



Freestanding, Felt



Edge Mounted, Rectangular or Tapered



Edge Mounted with Modesty Panel



Epicenter® Mounted, Rectangular or Tapered

Freestanding Screens: Sits on worksurface; Provides seated height privacy; Resin or felt; Metal holders; 21" - 72" widths

Edge Mounted Screens: Attaches to worksurface edge; Provides seated height privacy; Rectangular or tapered resin; Metal holders; 21" - 72" widths

Epicenter® Mounted Screens: Attaches to Epicenter™ trim cap; Provides seated height privacy; Rectangular or tapered resin; Metal holders; 21" - 72" widths

Metal Support Finishes: 405 Designer White, 462 Cinder, 501 Platinum Metallic, 503 Satin Nickel Metallic

Resin Screen Colors: 1677 Frosted, 2877 Ting Ting, 2977 Scribble Cloud, 3377 Wisp Silver

Felt Screen Colors: 60 Light Blue, 63 Off White, 66 Orange, 67 Stone Grey

Power and Data Management



Worksurface Wire Manager



Round Grommet



Racetrack Grommet



Power/Communication Center



One Touch Pivoting Power Grommet



Convenience Outlet



Undersurface Wire Manager



Horizontal Wire Manager



Byrne Interlink® System

Worksurface Wire Manager: Manages cables across length of worksurfaces; Available in 403 Chamois, 405 Designer White, 419 Wallaby, 420 Sandstone, 425 Shadow, 440 Cloud, 461 Graphite, 462 Cinder, 480 Antique White and 485 Dark Chocolate

Round Grommet: Nylon two-piece grommet; 2 1/4" diameter; Black plastic

Racetrack Grommet: Metal, two-piece zinc grommet; Available in 462 Cinder, 501 Platinum Metallic and 503 Satin Nickel Metallic

Power/Communication Center: Fits into racetrack grommets; Provides power/data access to the worksurface; Features two electrical outlets and two blank data ports; UL listed

One Touch Pivoting Power Grommet: Features one power outlet and one blank data port, or two power outlets, or one power outlet and 2 USB ports; One touch door remains open while in use; Available in silver or black; UL listed

Convenience Outlet: Features five grounded electrical receptacles and one telephone jack with 14' cord; Includes 10' power cord and remote on/off power switch; UL listed

Undersurface Wire Manager: Manages and routes cords; Attaches to underside of worksurface; Black nylon

Horizontal Wire Manager: Conceals and routes cords; Attaches to underside of worksurface; Black nylon

Byrne Interlink® System: Each Interlink module contains a power center that features two power outlets and two data port openings; The Interlink system can be used with as few as one Interlink module and up to as many as eight modules; UL recognized

Metal Work Tools



Shelf

Single Side Tray

Double Side Tray

Pocket Organizer

Slant Sorter

Binder Shelf

Black Pencil Tray

Metal Work Tools: Use with Epicenter and Exhibit slat walls

Shelf: Available in 24", 30", 36", 42", and 48" widths

Pocket Organizer: Vertically nest up to five organizers

Metal Finishes: 462 Cinder, 501 Platinum Metallic, 503 Satin Nickel Metallic



Black Plastic Work Tools



Legal Paper Tray

Slant Sorter

Binder Shelf

Phone Holder

Accessory Tray

Pencil Cup

Clear Plastic Work Tools



Legal Paper Tray

Slant Sorter

Phone Holder

Accessory Tray

Pencil Cup

Plastic Work Tools: Use with Epicenter, Exhibit and WaveWorks slat walls

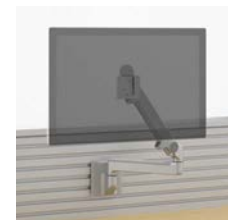
Monitor Arms



Clamp Mount Monitor Arm



Grommet Mount Monitor Arm



Slat Mount Monitor Arm

Clamp Mount Monitor Arm Single, double, and triple options; Mounts flat panel monitor above the worksurface; Easily adjust monitor's angle/depth/height; Supports up to 20 lbs.; Arm raises to 19 1/2"; Extends to 27 1/2"; Rotates 360°; Attaches through grommet in worksurface; Silver or Black

Grommet Mount Monitor Arm Single, double, and triple options; Mounts flat panel monitor above the worksurface; Easily adjust monitor's angle/depth/height; Supports up to 20 lbs.; Arm raises to 19 1/2"; Extends to 27 1/2"; Rotates 360°; Attaches through grommet in worksurface; Silver or Black

Slat Mount Monitor Arm Attaches to Epicenter® and Exhibit™ slat walls; Mounts flat panel monitor above the worksurface; Easily adjust monitor's angle/depth/height; Supports up to 20 lbs.; Arm raises to 19 1/2"; Extends to 27 1/2"; Rotates 360°; Attaches through grommet in worksurface; Silver or Black

Epicenter®



Multi-Circuit Epicenter®



Non-Powered Epicenter®

Multi-Circuit Epicenter: Mounts to WaveWorks undersurface storage and provides support for perpendicular workspaces; Personalize the Epicenter with slat wall, slat with tack, marker board and tack board inserts; Epicenter frames provide a 5 wire/3 circuit, 20 amp power to a linear run of work spaces; Tack board or tack/slat inserts must be specified for access to power and data; May be connected to building's power at the floor, wall or ceiling; Epicenter frame features a channel for routing data cables; Access to power/data may be above or below work surface depending on height of undersurface storage the Epicenter is attached to

Non-Powered Epicenter: Mounts to Epic or WaveWorks undersurface storage and provides support for perpendicular workspaces; Personalize the Epicenter with slat wall, slat with tack, marker board and tack board inserts

Epicenter® Inserts



Upper Slat Wall Insert



Upper Tack Board Insert



Upper Tack with Slat Insert



Upper Marker Board Insert



Lower Wood Veneer Insert



Lower Laminate Insert



Lower Tack Board Insert

Upper Slat Wall Insert: Horizontal slats support work tools providing convenient above surface storage; Available in 462 Cinder, 501 Platinum Metallic and 503 Satin Nickel Metallic

Upper Tack Board Insert: Adds a convenient, tackable space above work surfaces; Available in Dune (Grade A), Repetition (Grade A) and Pact (Grade B) tack board fabrics as well as COM

Upper Tack with Slat Insert: Slat wall and tack board combination; Available in 462 Cinder, 501 Platinum Metallic and 503 Satin Nickel Metallic; Dune (Grade A), Repetition (Grade A) and Pact (Grade B) tack board fabrics as well as COM

Upper Marker Board Insert: Adds a convenient, erasable writing space above work surface; White porcelain, dry erase marker board; Magnetic

Lower Wood Veneer Insert: For single sided applications; Available in IM Brighton, NM Natural, HN Honey, CL Caramel, TF Truffle, AC Autumn, MC Amber, CW Cordovan, DW Judicial and MH Mocha wood finishes

Lower Laminate Insert: For single sided applications; Available in IM Brighton, NM Natural, HN2 Honey 2, CL Caramel, TF Truffle, AC2 Autumn 2, MC Amber, CW Cordovan, DW Judicial, MH Mocha, 403 Chamois, 405 Designer White, 419 Wallaby, 420 Sandstone, 425 Shadow, 440 Cloud, 461 Graphite, 462 Cinder, 478 Platinum Grey, 480 Antique White, 791 Palisander, 792 Sable and 793 Acorn laminates

Lower Tack Board Insert: For single sided applications; Available in Dune (Grade A), Repetition (Grade A), Pact (Grade B) tack board fabrics as well as COM

Epicenter® Overhead Storage Cabinets



Sliding Resin Doors



Shared with Sliding Resin Doors



Sliding Metal Doors



Shared with Sliding Metal Doors



Open (No Doors)



Shared, Open (No Doors)



Wood Veneer Back Panel



Laminate Back Panel



Marker Board Back Panel

Overhead Storage Cabinet: Straddles Epicenter; Allows for convenient seated height storage; Two sliding doors or open; Additional cabinet option available for single-sided applications

Shared Overhead Storage Cabinet: Straddles Epicenter; Allows for convenient seated height storage; One sliding door per side or open

Back Panel Options (Single-Sided Applications): Available on cabinets for single-sided applications only; Wood veneer, laminate or marker board

Resin Door Colors: 1677 Frosted, 2877 Ting Ting, 2977 Scribble Cloud, 3377 Wisp Silver

Metal Door/Track Finishes: 405 Designer White, 462 Cinder, 501 Platinum Metallic, 503 Satin Nickel Metallic

Exhibit™ Wall Rail Solution



Using Exhibit™ Lower Rails Only



Using Exhibit™ Upper and Lower Rails



Using Exhibit™ Upper and Lower Rails with Inserts

Exhibit™ Wall Rail Solution: Exhibit offers the flexibility to accommodate with stylish, functional furnishings from simple to the more sophisticated tastes; Utilize lower rails with WaveWorks worksurfaces and pedestals to create an economical solution; For additional storage and personalization, add overhead wall mounted cabinets and a standard tack board; Worksurfaces mount anywhere along lower wall rails with worksurface brackets; Maximize space and gain the utmost in productivity by incorporating lower and upper wall rails with WaveWorks casegoods and Exhibit wall inserts

Sustainable Attributes level® 2; SCS Indoor Advantage™ Gold

Exhibit™ Wall Rails



Wall Rails



Wall Rail with Faceplate



Wall Rail with Faceplate and Full End Trim

Exhibit™ Wall Rails: Attach to wall; Available in 462 Cinder, 501 Platinum Metallic and 503 Satin Nickel Metallic; Exhibit wall rails support inserts and are held in place the faceplate and end trim

Exhibit™ Inserts



Tack Board Insert



Slat Wall Insert



Slat Wall with Tack Board Insert



Porcelain Marker Board



Laminate Marker Board

Tack Board Insert: Mounts between upper and lower wall rails; Available in Dune (Grade A), Repetition (Grade A) and Pact (Grade B) tack board fabrics as well as COM

Slat Wall Insert: Horizontal slats support work tools providing convenient above surface storage; Available in 462 Cinder, 501 Platinum Metallic and 503 Satin Nickel Metallic

Slat Wall with Tack Board Insert: An economical solution when overhead storage will cover the top portion of the insert; Available in 462 Cinder, 501 Platinum Metallic and 503 Satin Nickel Metallic; Dune (Grade A), Repetition (Grade A) and Pact (Grade B) tack board fabrics as well as COM

Porcelain Marker Board Insert: White porcelain, dry erase marker board is also magnetic

Laminate Marker Board Insert: White HPL laminate, dry erase marker board

Pulls



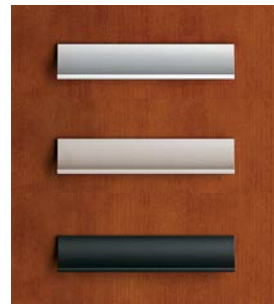
Nantucket Pull



Malibu Pull



Newport Pull



Laguna Pull



Summit Pull



Spiral Pull



Balance Pull



Sweep Pull



Groove Pull



Level Pull



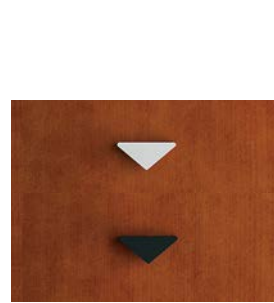
Waterfall Pull



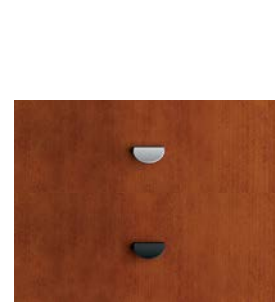
Horizon Pull



Beam Pull



Triangle Pull



Crescent Pull



Bar Pull



Boca Pull



Marina Pull



Curved Pull



Elongated Pull



Allure Pull



Keen Pull

Nantucket, Malibu, Newport, Laguna, Summit, Spiral, Balance, Sweep, Groove, Level, Waterfall, Horizon, and Beam Pulls: Available in Platinum Metallic, Satin Nickel Metallic and Cinder

Triangle, Crescent, Bar, Boca, Marina, Curved and Elongated Pulls: Available in Platinum Metallic and Cinder

Allure Pulls: Available in Platinum Metallic and Cinder; Polished aluminum accents

Keen Pull: Available in Satin Nickel Metallic

Wood Finishes



IM Brighton



NM Natural



HN Honey



CL Caramel



TF Truffle



AC Autumn



MC Amber



CW Cordovan



DW Judicial



MH Mocha

IntegraClear® UV Finish

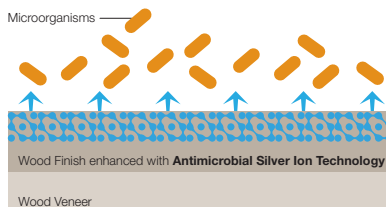


An environmentally-friendly, high performance finish for you and the environment.

IntegraClear® is National's water-based finish cured via ultraviolet (UV) light that offers exceptional clarity and durability in our wood products. This environmentally-friendly finish and its application process enables our products to meet or exceed strict indoor air quality requirements which create healthier workplaces and can contribute towards earning a LEED® Green Building Rating.

IntegraClear® is the ultimate balance of clarity, durability and sustainability. This extremely low emitting finish provides excellent wood protection to keep your casegoods and tables looking their best. For additional performance, our finish features Antimicrobial Silver Ion Protection which inhibits the growth of stain and odor causing bacteria. Curing quickly to a completely inert finish, with excellent resistance to heat and chemicals, IntegraClear® offers excellent cleanability while allowing the natural beauty of the wood details to be seen through the finish.

Antimicrobial Silver Ion Protection



You deserve the ultimate performance from the products you choose.

Although it may be out of sight, out of mind, the fighting action of silver ion technology never stops working. Inhibiting the growth of bacteria, such as E. coli, Staph and other microbes that can create odors and stains, silver ion technology provides a continuous protective antimicrobial surface.

On unprotected surfaces, bacteria have the capability to double in number every 20 minutes. Mitigating the effects of this rapid escalation, the antimicrobial silver ion technology embedded into our wood finish inhibits bacterial growth by 99.94%, keeping surfaces cleaner, longer. Ideal for any space and organization, the extra level of product performance is especially suited for the high traffic, public areas in healthcare and education environments.

Laminates, Thermofoils and Metal Paint Colors



IM Brighton
Laminate



NM Natural
Laminate



HN2 Honey 2
Laminate



CL Caramel
Laminate



793 Acorn
Laminate



792 Sable
Laminate



TF Truffle
Laminate



AC2 Autumn 2
Laminate



MC Amber
Laminate



CW Cordovan
Laminate



DW Judicial
Laminate



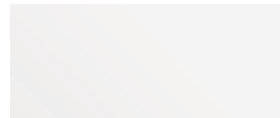
MH Mocha
Laminate
Thermofoil



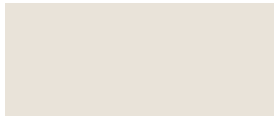
791 Palisander
Laminate



403 Chamois
Laminate
Metal Paint Color



405 Designer White
Laminate
Thermofoil
Metal Paint Color



419 Wallaby
Laminate
Metal Paint Color



420 Sandstone
Laminate
Thermofoil
Metal Paint Color



425 Shadow
Laminate
Metal Paint Color



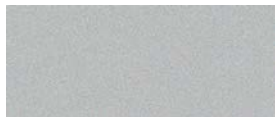
440 Cloud
Laminate
Thermofoil
Metal Paint Color



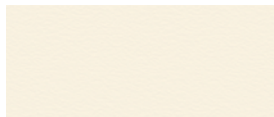
461 Graphite
Laminate
Metal Paint Color



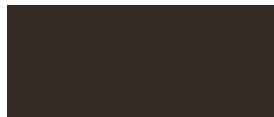
462 Cinder
Laminate
Metal Paint Color



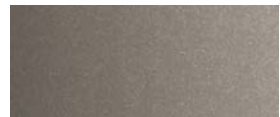
478 Platinum Grey
Laminate



480 Antique White
Laminate
Thermofoil
Metal Paint Color



485 Dark Chocolate
Metal Paint Color



503 Satin Nickel Metallic
Metal Paint Color



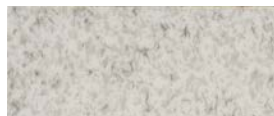
505 Satin Bronze Metallic
Metal Paint Color



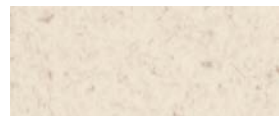
501 Platinum Metallic
Metal Paint Color



504 Taupe Metallic
Metal Paint Color



466 Concrete Fiber
Thermofoil



484 Cashmere Fiber
Thermofoil



802 White Nebula
Laminate



805 Titanium Evolv
Laminate



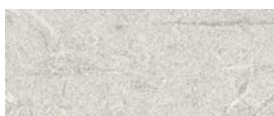
807 Silicon Evolv
Laminate



809 Tungsten Evolv
Laminate



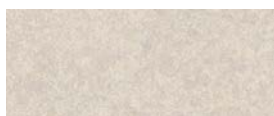
813 Saffron Tigris
Laminate



814 White Tigris
Laminate



817 Olive Legacy
Laminate



860 Neutral Santos
Laminate



873 Tawny Legacy
Laminate



874 Bronze Legacy
Laminate

Tack Board Fabrics

Dune

100% Polyester **Grade A**



8600 Drift



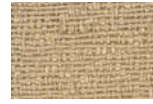
8601 Windblown



8602 Erosion



8603 Haze



8604 Kamelos



8606 Pebble



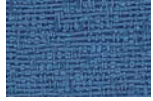
8607 Gecho



8608 Nectar



8610 Clear Sky



8614 Basin



8615 Raven



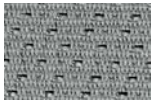
8620 Darkness



8621 Golden

Repetition

75% Pre-Consumer Recycled Polyester, 25% Post-Consumer Recycled Polyester **Grade A**



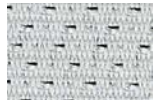
3700 Ash



3705 Willow



3709 Java



3713 Stainless



3715 Almond



3721 Reed



3726 Kiwi



3737 Sisal



3744 Tawny



3753 Steel



3766 Wicker



3775 Grey Green



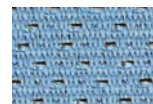
3782 Honeycomb



3785 Blue Grass



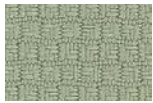
3792 Spa



3799 Cornflower

Pact

65% Pre-Consumer Recycled Polyester, 35% Post-Consumer Recycled Polyester **Grade B**



25401 Aloe



25402 Azure



25403 Calla



25404 Coastal



25405 Delft



25406 Dove



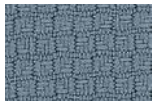
25407 Dragon



25408 Eureka



25409 Fern



25410 Harbour



25411 Lily



25412 Lime



25413 Midnight



25414 Nectar



25415 Patina



25416 Putty



25417 Roast



25418 Roma



25419 Rubine



25420 Sketch



25421 Tanzanite

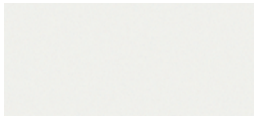


25422 Taupe



25423 Toasty

Resins



1677 Frosted



2877 Ting Ting



2977 Scribble Cloud

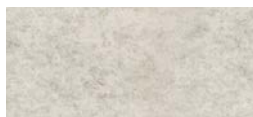


3377 Whisp Silver

Privacy Screen Felts



60 Light Blue



63 Off White



66 Orange



67 Stone Grey



Please reference the National® Casegoods Book 2 Price List or our website at www.NationalOfficeFurniture.com for additional product information.

On the Cover

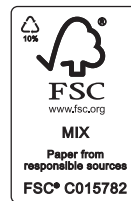
WaveWorks® Casegoods, Sable Laminate, Softened Rim Profile, Horizon Pulls in Satin Nickel Metallic
Exhibit™ Wall Rail Solution, Satin Nickel Metallic Wall Rails, Sable Laminate Shelf Inserts, Pact Taupe Tack Insert
Aurora® Executive/Conference Seating, Stinson Cannon Beach Piper



NATIONAL | Furniture with Personality®

www.NationalOfficeFurniture.com

1205 Kimball Boulevard, Jasper, IN 47549
 800.482.1717 Fax 812.482.8800
 © Kimball International, Inc. 2013
 Printed in the USA
 Form No. NBRWW Ver. 14
 A Unit of Kimball International



To protect the environment, this brochure is printed on FSC® Certified paper using SOYINK™ inks.