

MEDICINE CABINET RECESSED MOUNT

Installation Instructions



INSTALLATION

1. WALL PREPARATION AND CABLE ROUTING

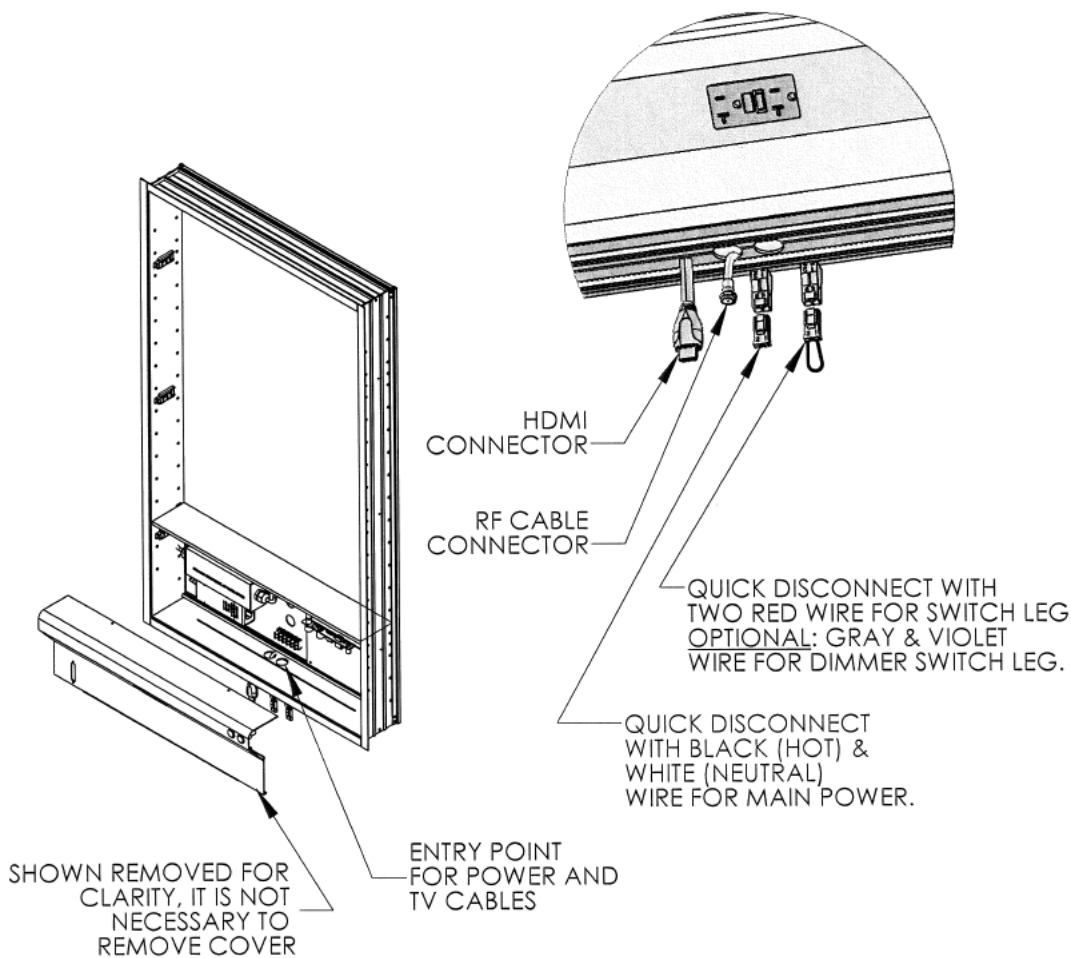
Cut opening in wall, per specs in sales aid drawing, in desired location. Ensure that a wall stud is located on either side of the cabinet.

Wire and Cable Connection:

Quick disconnected terminals, HDMI cable, and RF cable pig tails are provided and exiting out of the bottom entry port of the cabinet. Removal of electrical access panel is not required. The quick disconnect with black and white color wire is for main power to the unit. The quick disconnect with two red color wires is for light switch legs.

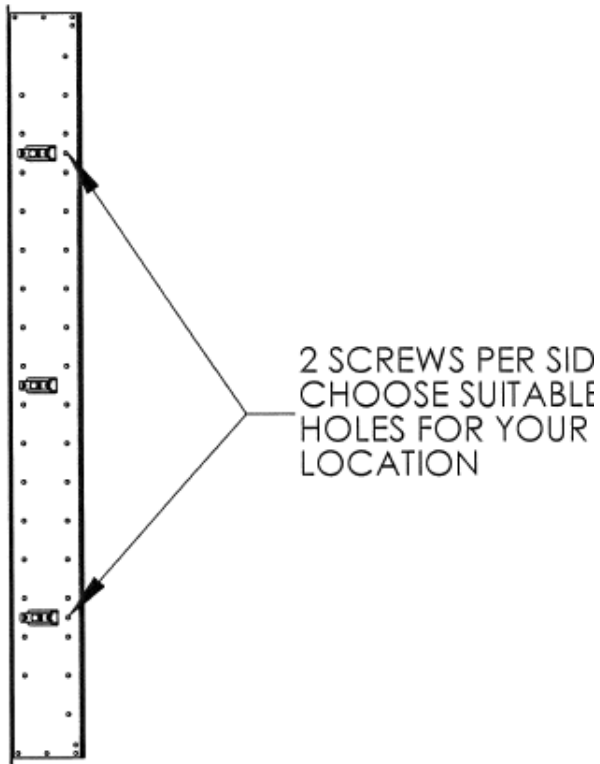
Dimmable Option:

If the medicine cabinet was ordered with dimmable option, then connect gray (negative) and violet (positive) wires form a low voltage (0-10 VDC) control dimmer switch to the quick disconnect. The quick disconnect with black and white color wire is for main power to the unit.



2. CABINET MOUNTING

After cabinet has been wired and tested, place the cabinet in wall recess and mount to the studs with (4) #8 x 1.0" screws.

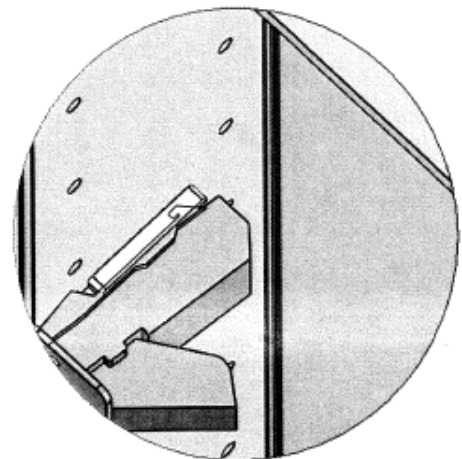
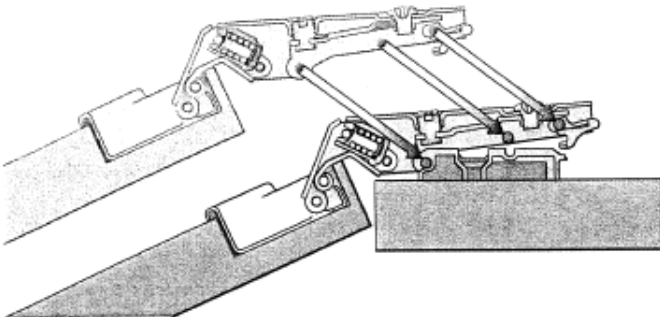


3. DOOR HANGING

Once the cabinet is mounted in the wall, attach the door by snapping the three hinges into place.

Blum three-point contact

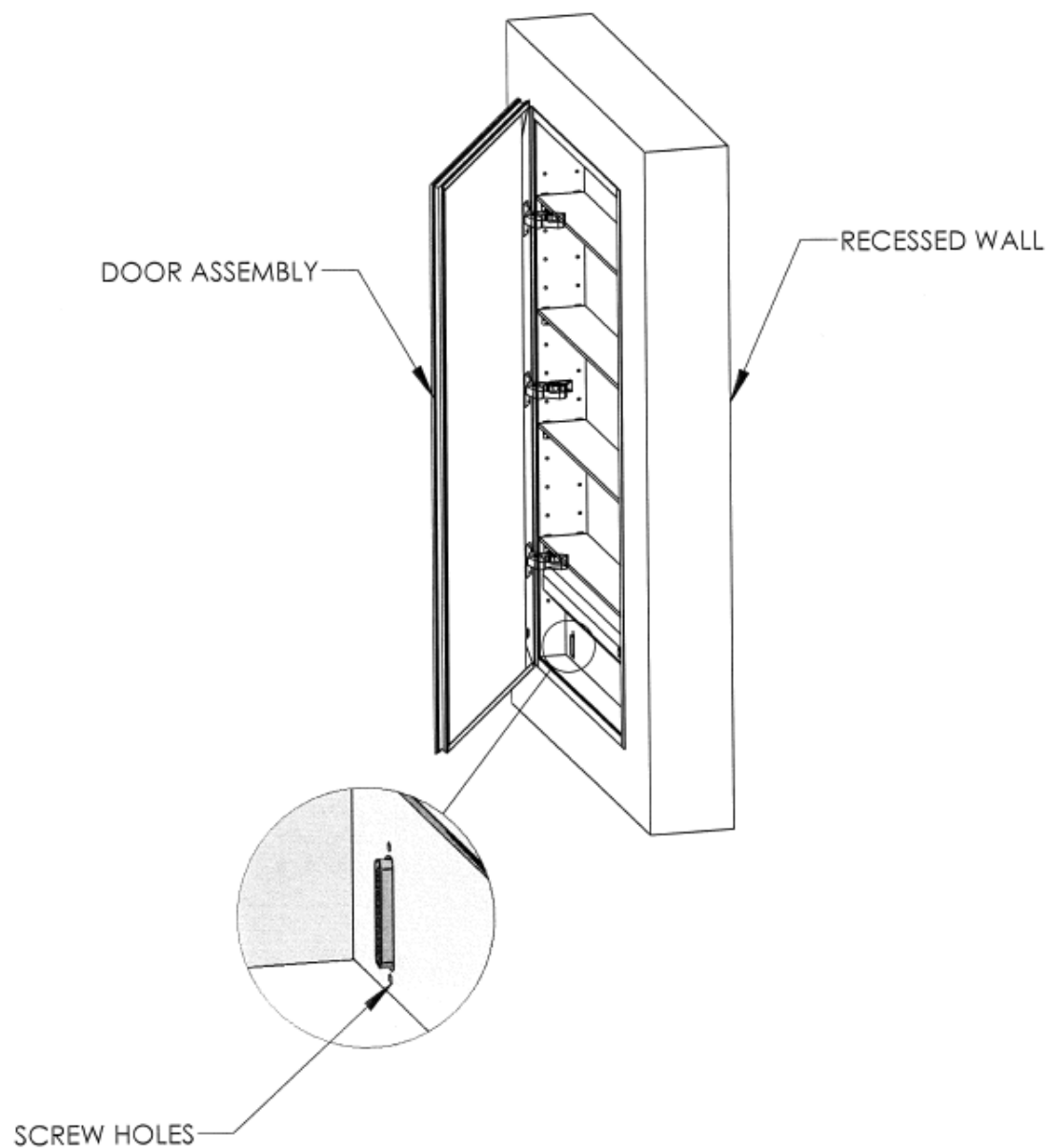
CLIP top and CLIP hinges have three-point contact between the hinge and mounting plate to keep them firmly connected under heavy usage.

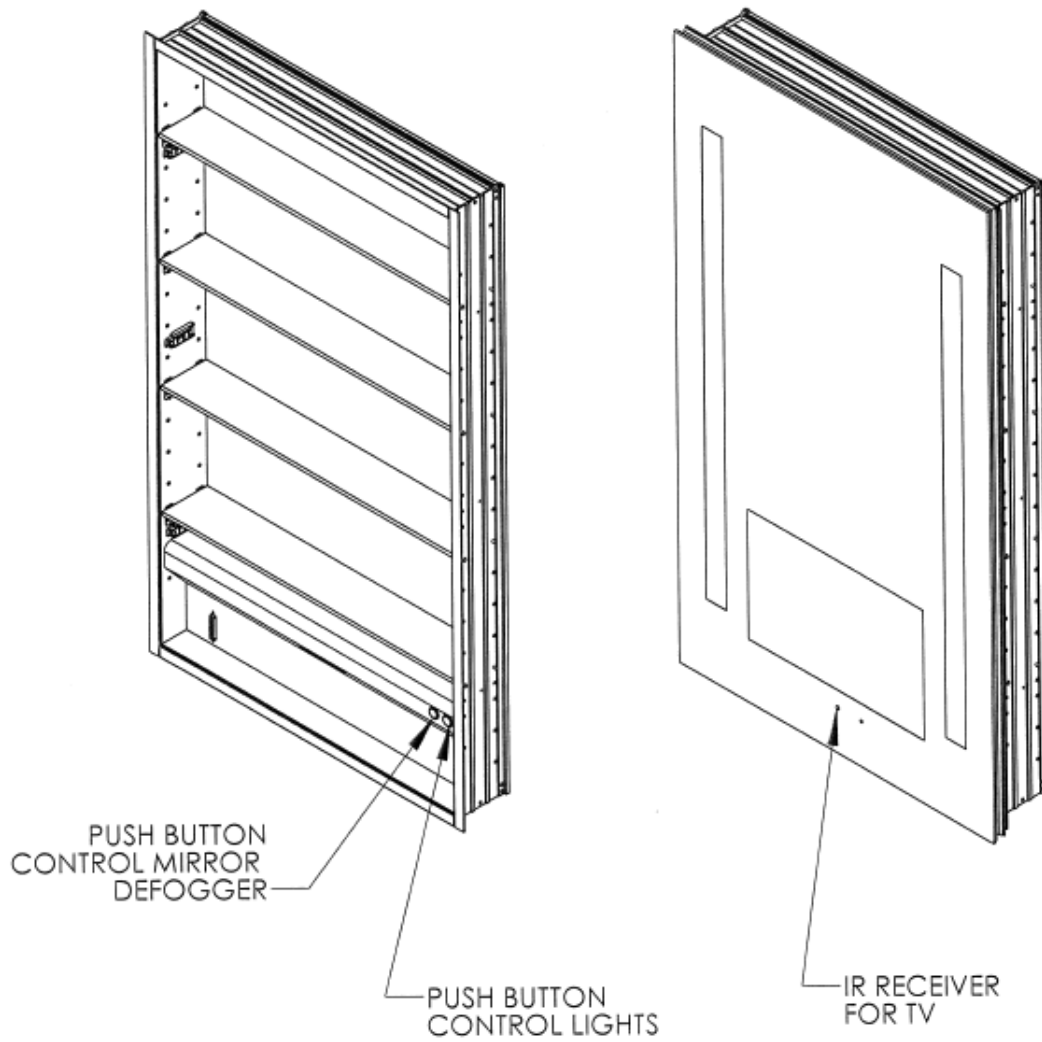


HINGE DETAIL VIEW
(DOOR NOT SHOWN)

4. FINAL CONNECTIONS

Plug in the cable from the door to the cabinet and secure in place by lightening the screws on the end of the cable. Retest medicine cabinet for functionality. Use provided remote control for TV. The installation is now complete.





OPERATION

Use provided remote control for TV.

Right side [push button controls LED lights.

Left side push button controls mirror defogger.