



Water Connects Us™

Model

## ST-2069-A Universal Closet

Rear Spud Vitreous China Elongated Water Closet

### DESCRIPTION

Complete vitreous china water closet.

### Flush Cycle

Model ST-2069-A Universal Closet

(1.1 to 1.6 gpf/4.2 to 6.0 Lpf)

Code: 2102069

Flush volume is determined by the flushometer used with closet.



### SPECIFICATIONS

#### Water Closet

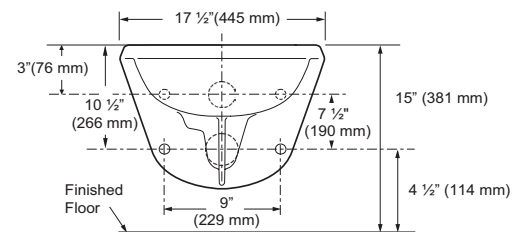
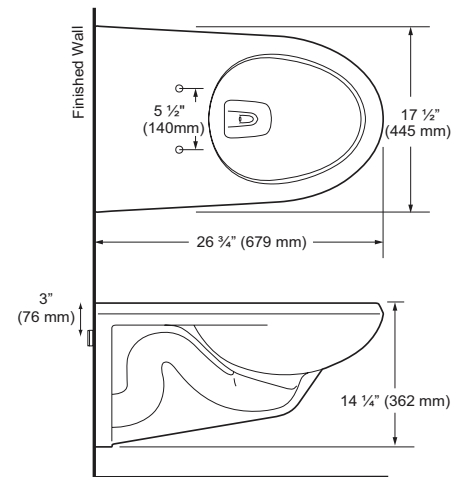
- Wall hung vitreous china elongated bowl
- Siphon jet flushing action
- 1-1/2" I.P.S. rear spud inlet
- 2-1/8" fully glazed trapway diameter
- Mounting hardware, carrier and toilet seat not included
- Integral flushing rim
- Water spot area 9 1/2" x 8 1/4"
- ASME A112.19.2/CSA B45.1

#### Colors/Finishes

- White

#### Recommended Seats

- Bemis - 1955CT/1955SST & 2155CT/2155SST
- Church - 295CT/295SST & 2155CT/2155SST



Designed to meet ADA standards when bowl is 17" - 19" high including seat

\* Please note that this model is fully interchangeable with Models: ST-2060-A, ST-2063-A and matches all dimensional and performance parameters.

\*\* This model meets the requirements for a High Efficiency Toilet when used with a high efficiency flushometer (1.28 gpf/4.8 Lpf or 1.1/1.6 gpf-4.2/6.0 Lpf dual-flush).



Meets the American Disabilities Guidelines and ANSI A117.1 requirements when installed according to these requirements.

#### NOTE:

Plumbing System Requirements

✓ Minimum **Flowing** Pressure: 25 PSI

✓ Maximum Static Pressure: 80 PSI

✓ Minimum Flow Rate: 18 gpm

This space for Architect/Engineer approval	
Job Name	Date
Model Specified	Quantity
Variations Specified	
Customer/Wholesaler	
Contractor	
Architect	

The information contained in this document is subject to change without notice.

**NOTE:** All vitreous china dimensions shown in these drawings are nominal. Dimensions can vary within the tolerances established in the governing ASME A112.19.2/CSA B45.1 standard. Please take this into consideration when planning rough-in and plumbing layouts.

#### Product Specification

Elongated water closet shall be made of vitreous china with a 1-1/2" rear spud inlet. Bowl shall be ADA compliant when installed at required height of 17"-19" from floor to top of fixture (including seat). Water Closet shall be Sloan Model ST-2069-A.



# SLOAN

Sloan  
10500 Seymour Avenue  
Franklin Park, IL 60131  
Phone: 1-800-982-5839  
Fax: 1-800-447-8329  
www.sloanvalve.com

© 2015 Sloan Valve Company  
ST-2069 03-15