

ZOLA MODULAR



krug



Thoughtfully designed, beautifully executed, and laden with useful features, Zola Modular has been expanded with an exciting new range of seating and table models - making it the most comprehensive solution for accommodating people beautifully, comfortably - and yet designed for easy cleaning, reconfiguring, repair, and replacement.

Zola Modular can be specified in an almost infinite variety of combinations and shapes: with and without backs, with or without tables, and with or without arms. Arms include full end arm panels, and interim arms (as shown below). An optional urethane arm cap enhances durability.



ZOLA BENCHES



Zola Benches have been expanded to include a range of curvilinear modules, and a second depth - providing the option of a wider seat surface and to create seamless configurations that combine benches and units with backs.



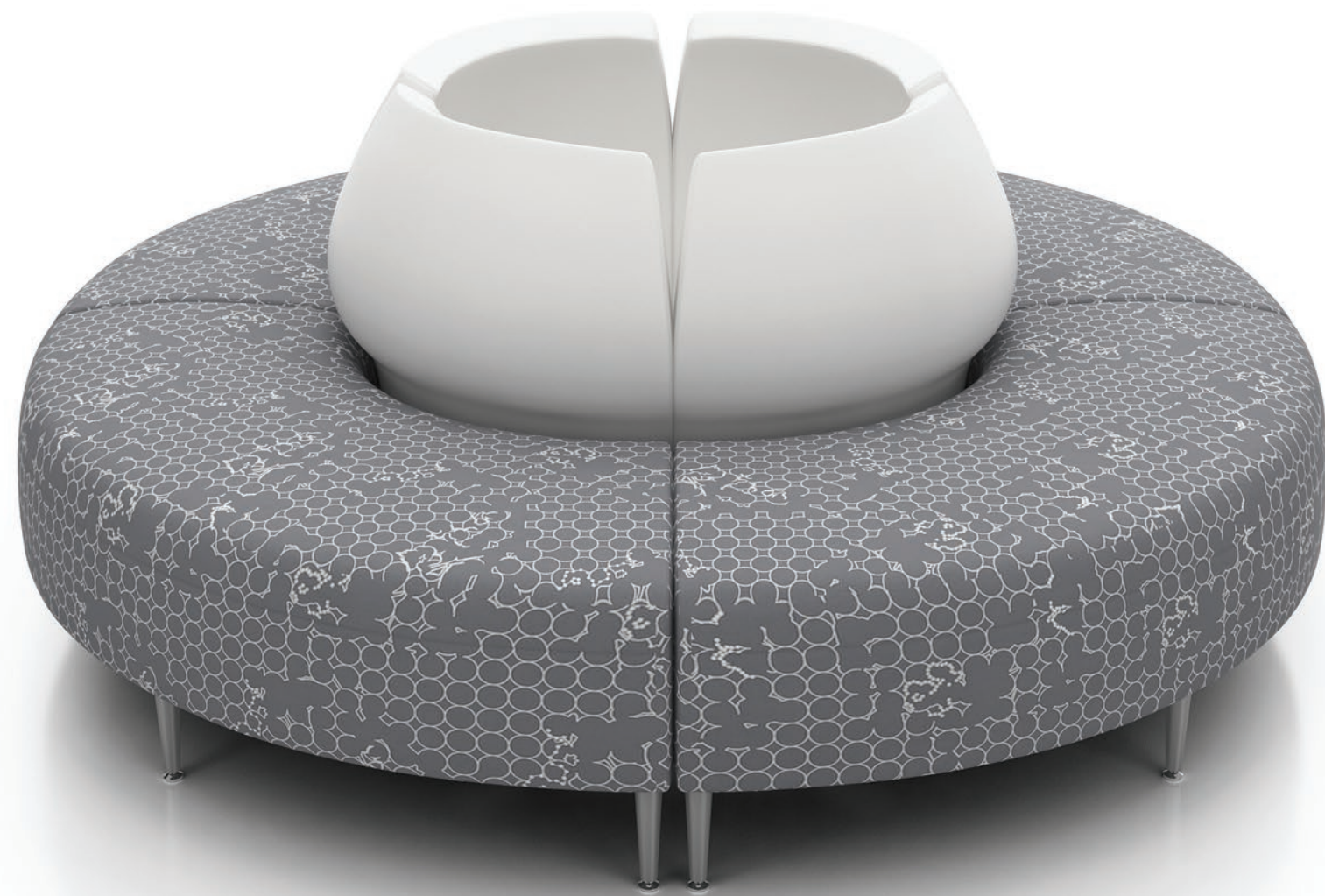
Zola Modular is uniquely designed for ease of cleaning, maintenance and repair. A clean out is located between the seat and back, and units can be quickly dis-assembled for full cleaning and disinfecting - as well as repair and replacement of damaged components. Upholstery covers can be specified as removable, for ease of cleaning and replacement.

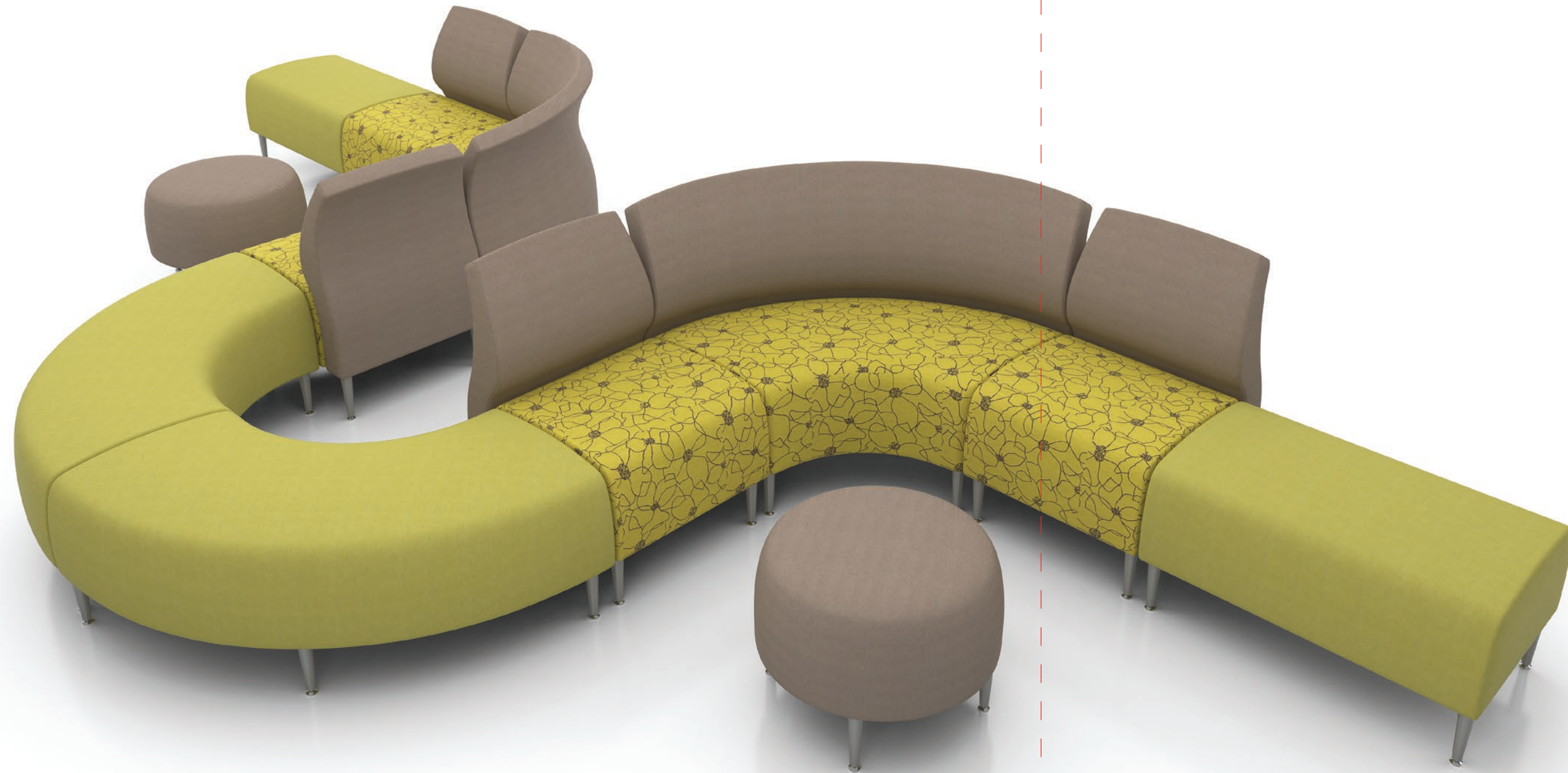
Zola Tables are offered in both inline and freestanding models, including a new range of rounded-corner tables that eliminate sharp corners and help prevent injury, wear and abrasion. Tables can be veneer, laminate, laminate/veneer combined, Palette solid color finishes - and all are available with a solid surface top option.



ZOLA TABLES





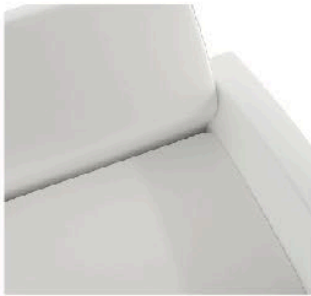


A functional and attractive alternative to freestanding tables, Zola Seatables are fully upholstered seat modules, in a range of shapes and sizes. Seatables allow additional space-efficiency by creating additional seat positions, and adding an element of warmth and softness. They're like ottomans but at seat height, and like tables that are comfortable to sit on - Seatables have rounded top edges to assist ingress and egress, and a comfortable, crowned seat.



ZOLA SEATABLES

FEATURES



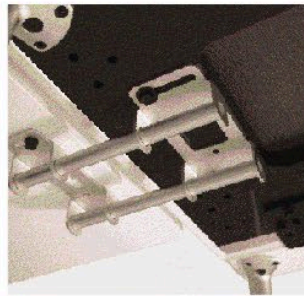
INTENSIVE USE ENVIRONMENTS

made to withstand the rigors of heavy use, including bariatric applications, with features such as: removable and replaceable upholstery covers, so covers can be cleaned, repaired or replaced as required; modular construction allows damaged components to be easily replaced, and allows for complete cleaning and disinfecting of each unit.



REPLACEABILITY

Zola is built to last: its heavy-duty structure is designed for intensive use environments. When any component is damaged or degraded, it can be easily changed out on its own, instead of having to replace or repair an entire unit.



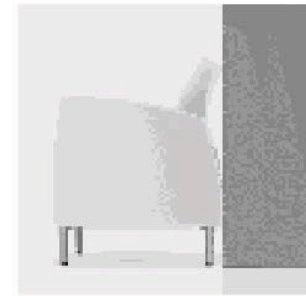
RECONFIGURABILITY

Zola is designed to enable change: components are inter-changeable, and metal-to-metal fitments allow fast and repeated reconfiguring. Its unique leveller provides exceptional leveling capability over large spans, and on uneven floors.



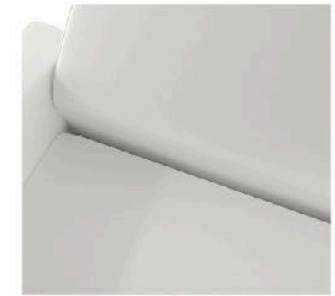
ANTI-MICROBIAL FINISH

Zola Wood Backs & Tables come with a uniquely formulated anti-microbial finish that inhibits the growth of molds and mildews. Wood Surfaces coated in this finish will have reduced fungal growth, and spores from germs, microbes and bacteria will not multiply.



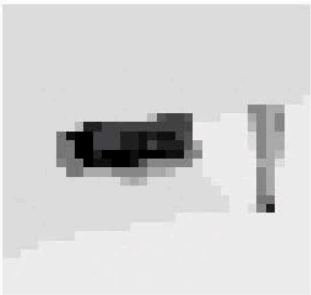
WALL SAVER

The angle of the Zola Lounge back and the rear legs are designed to keep the back away from the wall, to prevent wear and damage to both the chairs and to the walls of the room. Zola Upholstered chairs are built with a 1/2" clearance between the top of the back and the wall for the wall saver design. Please note wall saver is not a feature on the wood back versions.



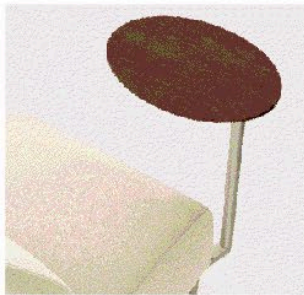
CLEAN OUT

Zola Lounge chairs have a built-in clean out feature: a space at the back of the seat that allows dirt and debris to fall to the floor for easy clean up and maintenance. The clean out feature was designed so that it does not detract from the comfort or appearance of the product.



POWERDOC

The Power Dock brings power and communications to Zola users. Mountable on the bottom face of both seats and tables, it has a self-closing metal cover for safety and cleanliness.



TABLET

Optional Tablets are available on Zola Modular in veneer, glass, high pressure laminate and palette finishes. The Zola tablet can be fastened to the Zola Lounge & Modular chairs by the Universal Tablet Mount (mounted left or right), to existing legs. The Zola Tablet has a turning radius of 360 degrees, which accommodates any worksurface angle.



The mark of responsible forestry



All products are air emissions certified and are available as FSC® certified

krug

solutions@krug.ca | www.krug.ca | 1.888.578.5784



URETHANE ARM CAP

The optional urethane arm cap provides enhanced durability and protection for the arms. The grey color of the urethane arm cap compliments the leg. The urethane arm cap is field replaceable if damaged or degraded with the assistance of a skilled upholsterer.



TABLES

Tables are available in veneer, plastic laminate, and Palette finishes - and an optional solid surface top.

- Beech, Maple, & Cherry Veneers
- Plastic Laminate
- Plastic Laminate with Wood Veneer Sides
- Palette Solid Surface colors
- Solid Surface Tops (Designer White D354SL)
- Anti-microbial coating
- Leveling glides on every leg