

FlexShade XD

Premium clutch-operated
window shade

by

DRAPER

Please check all appropriate selections and attach room schedule with verified dimensions.

Select Operator Location

Select **right side (standard)** or left side as seen from inside the room, facing the window. Also indicate selection on room schedule.

- ☐ Right Side (standard)
- ☐ Left Side

Select Hardware

- ☐ Brackets Only
- ☐ Fascia
 - ☐ Large
 - ☐ Radius
 - ☐ Square
 - ☐ Small
 - ☐ Radius
 - ☐ Square
- ☐ Headbox
 - ☐ Large
 - ☐ Ceiling/Wall Style
 - ☐ Pocket Style
 - ☐ Small
 - ☐ Ceiling/Wall Style
 - ☐ Pocket Style
- ☐ Type "D" Pocket
 - ☐ Type "D" Corners (How Many? _____)
 - ☐ Inside
 - ☐ Outside
 - ☐ Type "D" Endcap Kits (2 endcaps) (How Many? _____)
- ☐ Wall Clip
 - ☐ With ceiling tile lip
 - ☐ Without ceiling tile lip
- ☐ Closure Panel for Type D or Wall Clip
 - ☐ 1½" closure panel (recommended for clutch operated FlexShades)
 - ☐ 3" closure panel (notching required for Clutch FlexShades)
 - ☐ 5" closure panel (for wall clip only)
- ☐ Dual Roller FlexShade XD
 - ☐ Endcaps Only
 - ☐ Endcaps with Fascia

- ☐ Horizontal Dual Roller FlexShade XD
 - ☐ Endcaps Only
 - ☐ Endcaps with Small Fascia (large fascia not an option)
- ☐ Optional Channels for Light Gap Reduction (special installation considerations for use with Dual Roller FlexShade XD. Contact Draper for details)
 - ☐ "U" Channel 1" x 2½" x 16' length
 - ☐ "H" Channel 1" x 5" x 16' length
 - ☐ "L" Angle ¾" x 1" x 12'3" length
 - ☐ "L" angle 1" x 2¾" x 16' length

Select Hardware Finish

- ☐ Clear Anodized (standard)
- ☐ Black
- ☐ White
- ☐ Ivory
- ☐ Bronze

Select Fabric Orientation

- ☐ Regular Roll (from back of roller)
- ☐ Reverse Roll (from front of roller) [Not available with fascia]

Select Operator Chain

- ☐ Stainless Steel Chain (standard)
- ☐ Polyester Chain
 - ☐ Ivory
 - ☐ Grey
 - ☐ Black
 - ☐ Brown
 - ☐ White

Select Cord Tension Device (Bead Chain only)

- ☐ P-Clip Cord Tension Device
- ☐ Optional Spring Loaded Cord Tension Device

Select Clutch Color

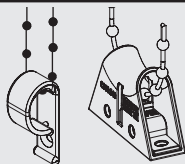
- ☐ White (standard)
- ☐ Black

Optional Spring Assist

- ☐ Spring Assist per manufacturer's standards (standard as required)
- ☐ Spring Assist on all units

Safety Note for Bead Chain Clutch Shades

Please Note: If shades are to be installed in areas accessible to young children, be certain to use cord tension device included with Bead Chain Clutch shades. Clutch-operated shades should not be installed near cribs or playpens.



For fabric selection and dimensions, please see pages 2 and 3.

DRAPER®

411 S. Pearl St., Spiceland, IN 47385 USA ■ 765-987-7999

www.draperinc.com ■ fax 765-987-7142

Copyright © 2013 Draper Inc. Form FlexShadeXD_Sub13

Printed in U.S.A.

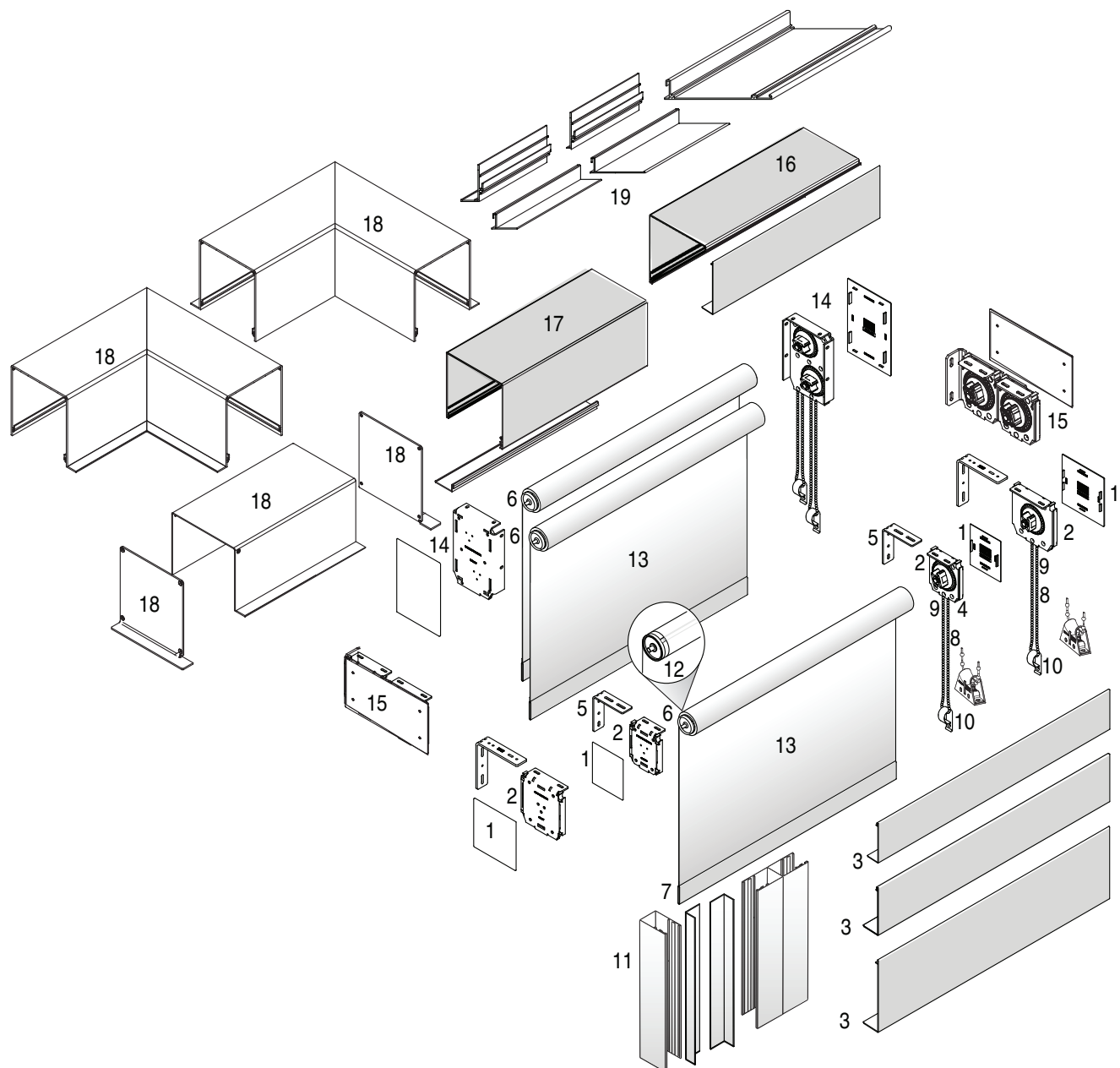
PROJECT: _____

ARCHITECT: _____

CONTRACTOR: _____

SUPPLIER: _____

DATE: _____ REVISED: _____



- ① End Cap Covers.
- ② Mounting Brackets (endcaps).
- ③ Fascia Cover
- ④ XD Clutch Mechanism.
- ⑤ Wall Brackets.
- ⑥ Roller Tube.
- ⑦ Bottom Hem Pocket.
- ⑧ Centered Bead Chain Drive.
- ⑨ Bead Chain.
- ⑩ Bead Chain Hold Down. Optional spring loaded chain tension device is also available.
- ⑪ "L" Angle, "H" Channel or "U" Channel.
- ⑫ Fabric Attachment.
- ⑬ Shade Fabric.
- ⑭ Dual Roller FlexShade XD.
- ⑮ Horizontal Dual Roller FlexShade XD.
- ⑯ Ceiling/Wall Headbox.
- ⑰ Pocket Headbox.
- ⑱ Type "D" Pocket. Pre-welded corners and endcaps optionally available.
- ⑲ Wall Clips and Closures with or without ceiling tile lip.
- ⑳ Optional Spring Assist Mechanism not shown.

⚠ Caution: When mounting a FlexShade XD in a headbox, the unit must be ceiling mounted with fasteners through the clutch and idler brackets. The headbox extrusion cannot be mounted to a structure unless the XD brackets are secured inside the extrusion.

Specifications—FlexShade XD**Equipment**

XD Clutch Operator: POM thermoplastic with welded 9 mm (.354") primary steel post with rotational bearing to ensure smooth and quiet operation. Overrunning design. Positive mechanical engagement of drive mechanism to tube. White (standard) or black color options. Stainless steel (standard) bead chain, or polyester control loop. Polyester chain in ivory, black or grey.

Rollers: Extruded aluminum 1.56", 2", 2.36", 2.56" and 3.12" diameter roller tube as appropriate for size of shade.

Components

Endcap: 1/8" thick zinc plated steel with reinforcement ribs. Wall or ceiling installation. 2 sizes: 3 1/4" x 3 3/4" and 4 1/2" x 4 1/2". Wall mount brackets are provided as standard. Snap-on plastic end cap covers to match clutch color.

Fabric Attachment: Fabric attached to roller tube with spline fabric attachment method. Allows for removal of fabric panel without removal of roller assembly.

Fascia: Optional L-shaped or radius cover of 6063-T5 extruded aluminum. Assembly snaps onto endcaps without exposed fasteners. **Clear anodized finish (standard)** or ivory, bronze, black or white powder coat. Fascia can also be wrapped in fabric. Radius fascia on small hardware only.

Headbox: Standard consists of fascia, L-shaped back/top cover. Assembly snaps onto endcaps. Optional, for pocket installation, includes a U-shaped back/top/front cover with removable bottom closure panel. Small size: 3 7/16" x 3 15/16". Large size: 4 11/16" x 4 11/16". Some exposed fasteners required. **Clear anodized (standard)** finish or black, white, ivory or bronze powder coat finish. Slat: Aluminum, encased in heat seamed hem.

Type D Pocket: Fabricated of 6063-T5 aluminum alloy for perimeter installation. Finished white. 5" x 5 3/8" x .125" with tile support lip and removable bottom closure. Pre-welded corners and endcaps optionally available. Larger 9 1/2" x 5 3/8" x .125" version for mounting two XD mechanisms in the same pocket also available.

Dimensions: Shades to fit windows with maximum protection from light streaks. Finished length of shades no less than 6" greater than window height.

"L" Angle (3/4" x 1" x 12'3", 1" x 2 3/4" x 16' or cut to length) and **"U" Channel** (1" x 2 1/2" x 16' or cut to length): Accepts side edges of fabric, prevents light gaps. Interior of channel provides for use of flat head screws. Dimensions of rollers, operators and hardware at manufacturer's discretion.

Specifications—Dual Roller FlexShade with XD Clutch

Two rollers mounted to a single set of endcaps, to accept fascia.

Equipment

XD Clutch Operator: POM thermoplastic with welded 9 mm (.354") primary steel post with rotational bearing to ensure smooth and quiet operation. Overrunning design. Positive mechanical engagement of drive mechanism to tube. White (standard) or black color options. Stainless steel (standard) bead chain, or polyester control loop. Polyester chain in ivory, black or grey.

Rollers: Extruded aluminum 1.56", 2" or 2.56" diameter roller tube as appropriate for size of shade.

Components

Dual Roller Endcaps (vertical): 1028 steel stamping. Complete with adapter roller bracket. Installs to wall or ceiling. Shades mount in vertical configuration (see drawings). Accepts fascia.

Fabric Attachment: Fabric attached to roller tube with spline fabric attachment method. Allows for removal of fabric panel without removal of roller assembly.

Fascia (for Endcaps): L-shaped cover of extruded aluminum, .060 wall. Assembly snaps onto endcaps without exposed fasteners. **Clear Anodized (standard)**, black, white, ivory, or bronze powder coat finish available.

Horizontal Dual XD FlexShade Bracket: 1028 steel stamping. Complete with adapter roller bracket. Installs to wall. Shades mount in horizontal configuration (see drawings). Accepts standard XD fascia.

"L" Angle (3/4" x 1" x 12'3", 1" x 2 3/4" x 16' or cut to length), **"U" Channel** (1" x 2 1/2" x 16' or cut to length) and **"H" Channel** (1" x 5" x 16' or cut to length): Accepts side edges of fabric, prevents light gaps. Interior of channel provides for use of flat head screws.

Dimensions of rollers, operators and hardware at manufacturer's discretion.

Select Fabric _____ Color name and number**Blackout**

Draper SB9000 _____

Draper SB9100 _____

Mermet Edessa Twilight FR _____

Mermet Flocke _____

Mermet Vizela _____

Phifer SheerWeave® SW7000 _____

Phifer SheerWeave® SW7100 _____

Solar**23%**

Phifer SheerWeave® SW1000 _____

14%

Phifer SheerWeave® SW3000 _____

10%

Mermet "E" Screen _____

Phifer SheerWeave® SW2100 _____

Phifer SheerWeave® SW2710 _____

Phifer SheerWeave® SW2600 _____

Phifer SheerWeave® SW2410 _____

Phifer SheerWeave® PW4100 _____

5%

GreenScreen Revive _____

Mermet "E" Screen _____

Mermet "M" Screen _____

Mermet Silverscreen _____

Phifer SheerWeave® Basic _____

Phifer SheerWeave® Infinity 2 _____

Phifer SheerWeave® SW2000 _____

Phifer SheerWeave® SW2705 _____

Phifer SheerWeave® SW2900 _____

Phifer SheerWeave® PW3500 _____

Phifer SheerWeave® PW4500 _____

Phifer SheerWeave® PW4550 _____

Phifer SheerWeave® Infinity 2 _____

Mermet Silverscreen _____

4%

Mermet "S" Screen _____

3%

Mermet "E" Screen _____

Mermet "M" Screen _____

Phifer SheerWeave® Basic _____

Phifer SheerWeave® Infinity 2 _____

Phifer SheerWeave® SW2703 _____

Phifer SheerWeave® SW2400 _____

Phifer SheerWeave® PW4400 _____

Phifer SheerWeave® PW4600 _____

Phifer SheerWeave® PW4650 _____

Ferrari Soltis 99 _____

1%

GreenScreen Revive _____

Mermet "E" Screen _____

Mermet "T" Screen _____

Mermet Vizela _____

Phifer SheerWeave® SW2701 _____

Phifer SheerWeave® SW2500 _____

Phifer SheerWeave® PW4800 _____

Varies

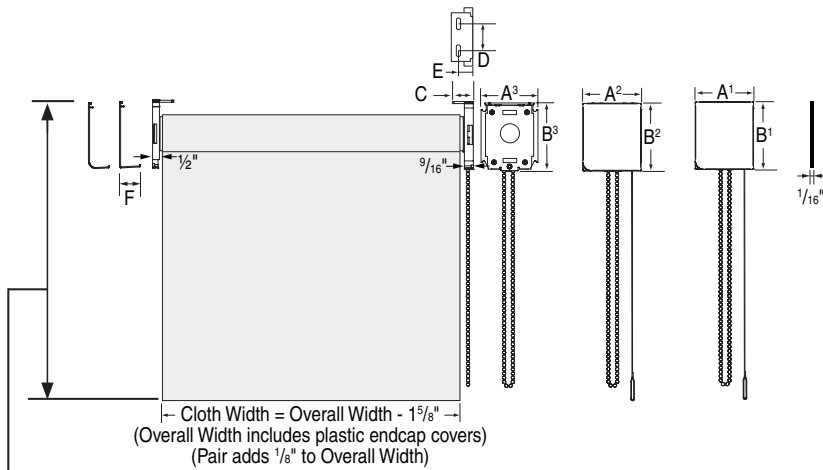
Mermet Vela _____

Phifer SheerWeave® SW5000 _____

For additional fabric information, go to www.draperinc.com/WindowShades/stylelist.asp.

To use our online fabric selection tool, go to www.draperinc.com/WindowShades/tools/fabricselector.

FlexShade XD Dimensions

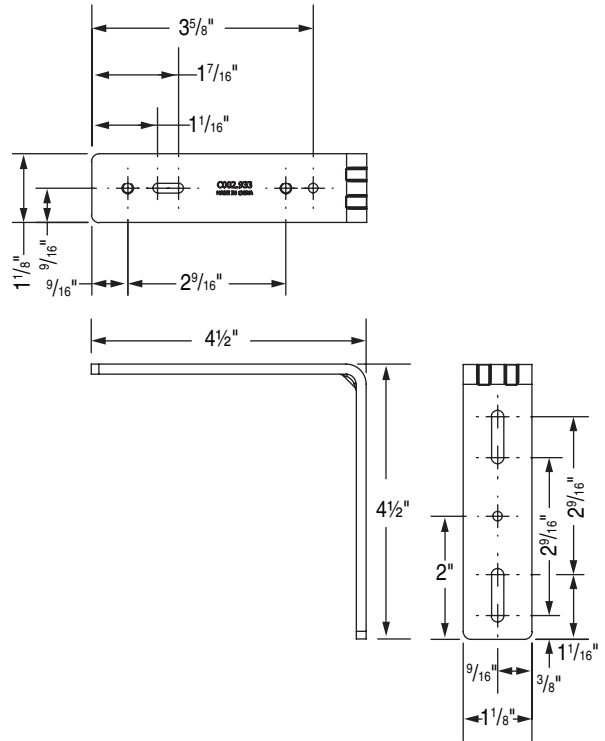


When measuring shade height, remember to include endcaps and wall brackets, fascia or headbox.

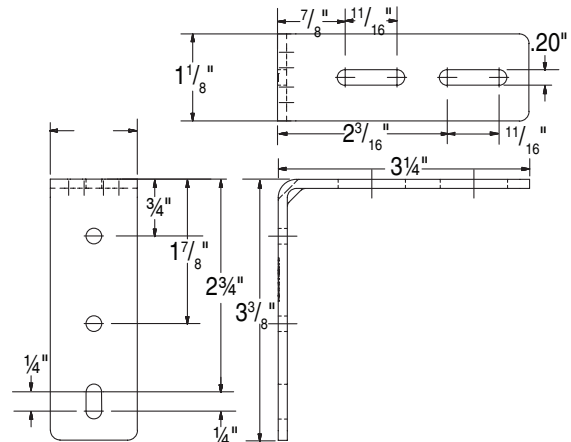
Headbox		Fascia		Endcaps*	
Small	Large	Small	Large	Small	Large
A ¹	3 ⁷ / ₁₆ "	4 ¹¹ / ₁₆ "	A ²	3 ³ / ₈ "	4 ⁵ / ₈ "
B ¹	3 ¹⁵ / ₁₆ "	4 ¹¹ / ₁₆ "	B ²	3 ⁷ / ₈ "	4 ⁵ / ₈ "
C	1 ³ / ₁₆ "	1 ³ / ₁₆ "	C	1 ³ / ₁₆ "	1 ³ / ₁₆ "
D	1 ⁵ / ₁₆ "	2 ⁹ / ₁₆ "	D	1 ⁵ / ₁₆ "	2 ⁹ / ₁₆ "
E	1 ³ / ₁₆ "	1 ³ / ₁₆ "	E	1 ³ / ₁₆ "	1 ³ / ₁₆ "
F	1 ³ / ₁₆ "	1 ⁹ / ₁₆ "	F	1 ³ / ₁₆ "	1 ⁹ / ₁₆ "
				N/A	N/A

* For Wall Mounting Bracket, add ³/₁₆" to A³ and B³.

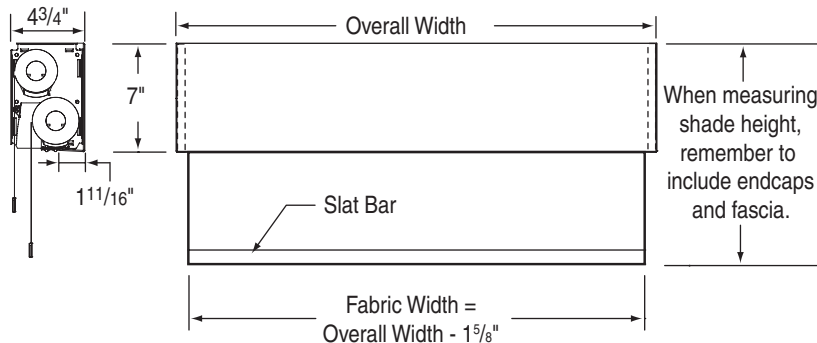
Large Wall Bracket Dimensions



Small Wall Bracket Dimensions

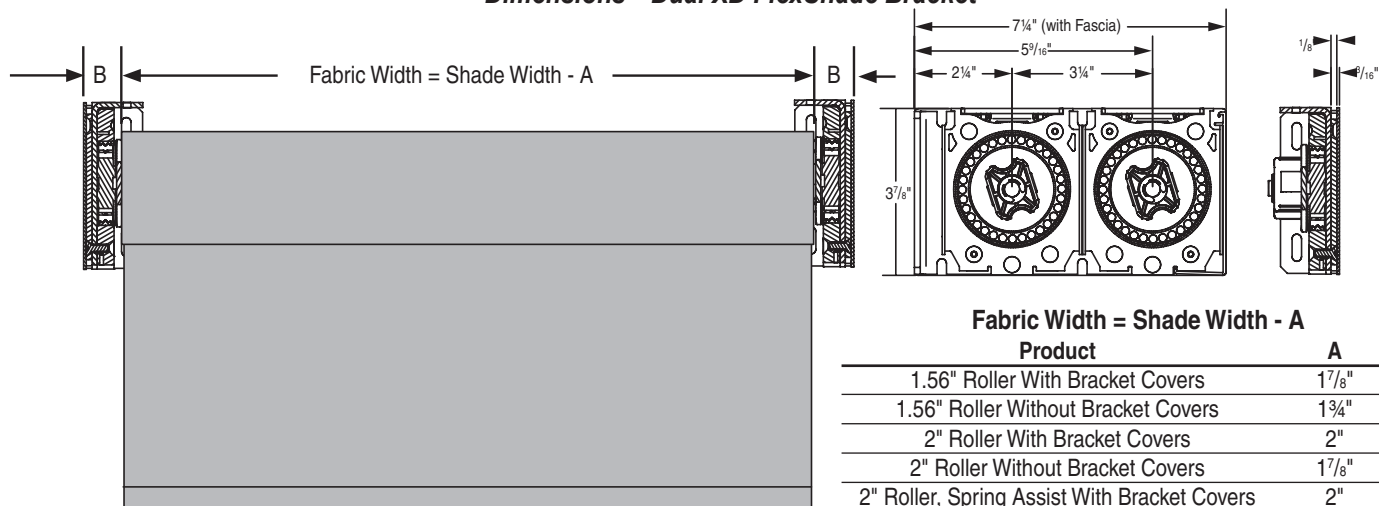


Dimensions—Dual Roller



When measuring shade height, remember to include endcaps and fascia.

Dimensions—Dual XD FlexShade Bracket



Fabric Width = Shade Width - A

Product	A	B
1.56" Roller With Bracket Covers	1 ⁷ / ₈ "	1 ⁵ / ₁₆ "
1.56" Roller Without Bracket Covers	1 ³ / ₄ "	7/8"
2" Roller With Bracket Covers	2"	1"
2" Roller Without Bracket Covers	1 ⁷ / ₈ "	1 ⁵ / ₁₆ "
2" Roller, Spring Assist With Bracket Covers	2"	1"
2" Roller, Spring Assist Without Bracket Covers	1 ⁷ / ₈ "	1 ⁵ / ₁₆ "