



Nest Series

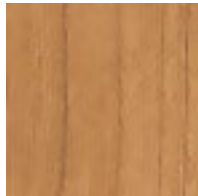
Material Options



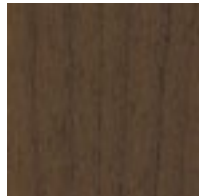
Maple Veneer: The following HBF standard finishes are available for this product:



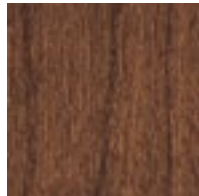
NE800
Natural Maple



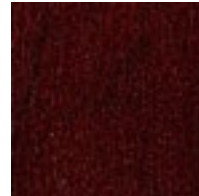
NE706
Wheat Cherry



NE777
Burnished Cherry



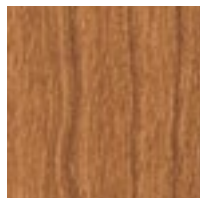
NE744
Canyon Cherry



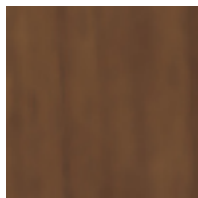
NE511
Dark Red Cherry



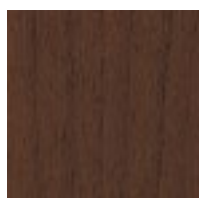
NE873
Honey Maple



NE701
Light Cherry



NE601
Light Roast Walnut



NE215
Medium Brown Cherry



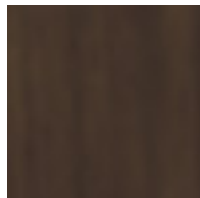
NE615
Coffee Walnut



NE629
Nutmeg Walnut



NE230
Mocha



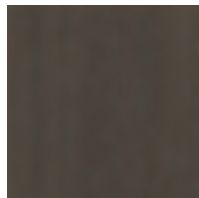
NE693
Sumatra Walnut



NE684
Dark Roast Walnut



NE284
Chicory Cherry



NE637
Charcoal Grey Walnut



NE293
Chestnut Cherry

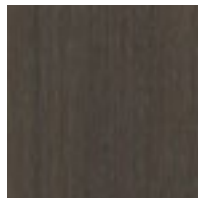


NE331
Dark Rift Oak

Oak Veneer:



RF310
Smoke (Pantone 407U)



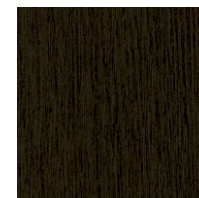
RF637
Charcoal Grey Walnut



RF301
Light Rift Oak



RF230
Mocha



RF331
Dark Rift Oak



Nest Series

Material Options



Painted Wood:



WPSW
Designer White (Soft White)

Wood owes its inherent beauty to variations in color, grain, and texture; therefore, these variations are not considered defects. Due to the natural color and grain variances of wood substance, the final finish color, texture and grain may vary from one furniture piece to another, even though they are finished at the same time. Exposure to light and the aging process will cause changes in surface color of natural wood products. Light finishes on wood products do not mask the natural characteristics of wood. HBF does not guarantee the exact matching of grain, pattern and color.

All HBF products are standard in a 30° sheen.

Metals:



PS
Polished Stainless

The finishes shown above are for reference only. For approval prior to placing your order, please request actual finish sample.

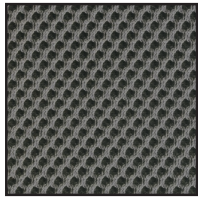


Nest Series

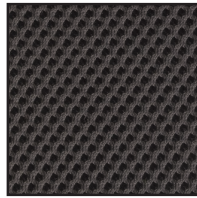
Material Options



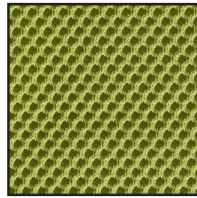
Woven Mesh:



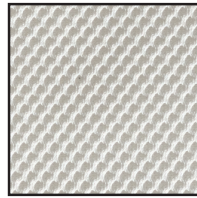
Smoke



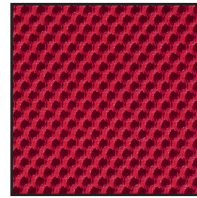
Graphite



Lime



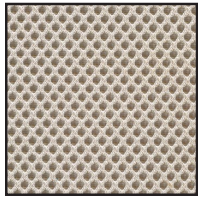
Chalk



Brick



Stone



Linen

Semi-translucent polyester woven mesh is standard on the back of Nest Chairs. This 3D mesh material is an integral part of the design of the chair and alternate materials cannot be specified for the back upholstery. This woven mesh material may also be specified for seat upholstery, either in the same color as the back or in a complementary color. The seat may also be specified in any upholstery fabric or leather.

Tested for dimensional stability and load-bearing capacity, this material passed ACT standards for flammability, colorfastness and physical properties as well as surpassing an abrasion test of 70,000 double rubs.

The finishes shown above are for reference only. For approval prior to placing your order, please request actual finish sample.