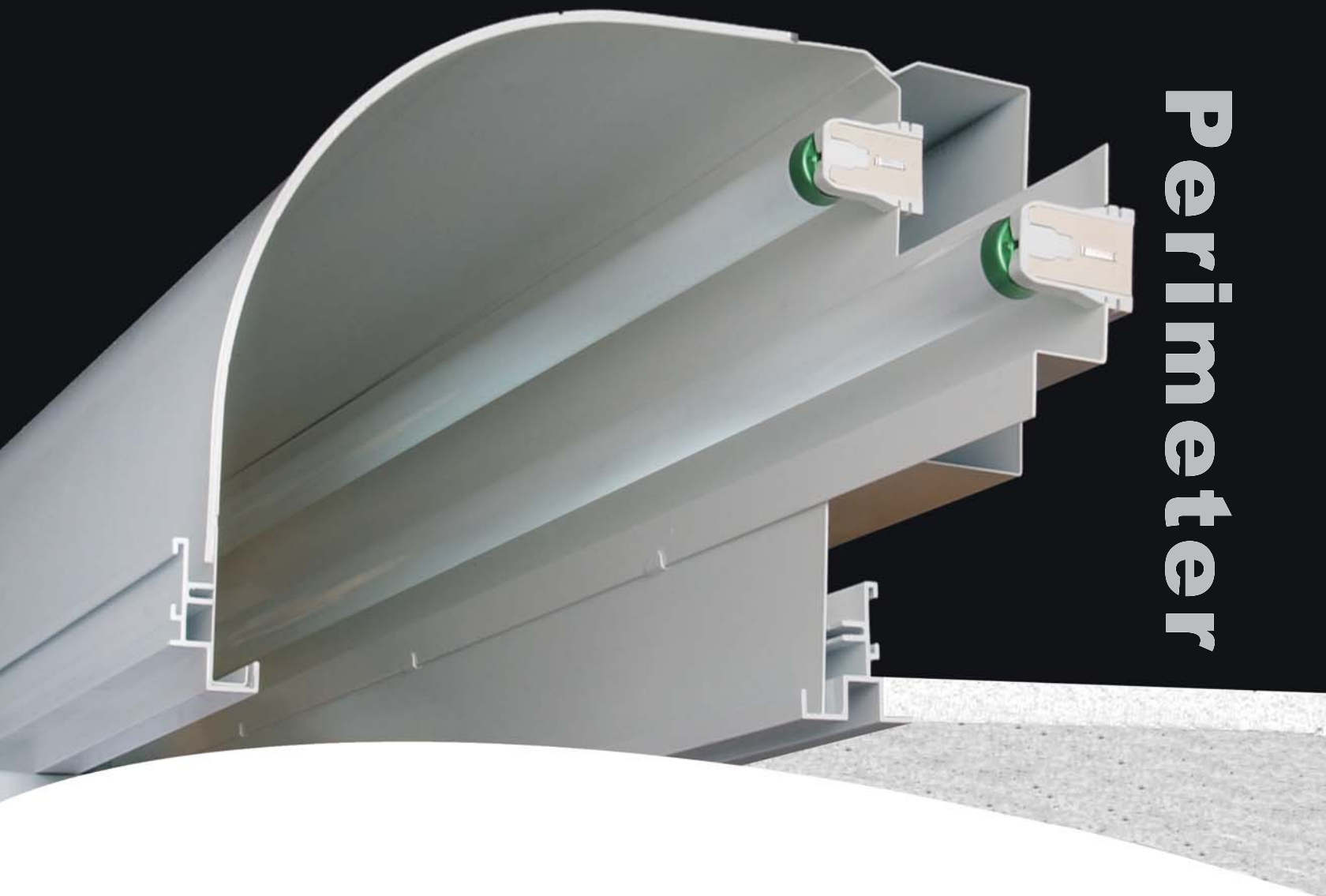


13

Perimeter

CS2 Series





White Painted Louver



Specular Louver



Semi-specular Louver



Prismatic Lens

Perimeter CS2

Perimeter CS2 is a high performance perimeter lighting system that provides a consistent wash of light on walls and ambient light within the space. The Perimeter CS2 is uniquely designed for application in corridors, boardrooms, meeting rooms, offices, libraries and public spaces. Supported by an aluminum wall-mounting rail at the ceiling plane, the luminaire remains completely concealed within the ceiling and directly supports adjacent ceiling tiles by means of an attached ceiling trim extrusion. A unique telescopic module is used in combination with standard sections to enable easy and exact field installations of any length. A 152mm (6") overlap of the lamps and full extension of the lamping into the corners ensures uniform wall brightness without shadows or streaks. Lamp placement and reflector design eliminate direct and reflected lamp image. The Perimeter CS2 offers a wide selection of light control options for the 203mm (8.0") opening and is available in either a 1-lamp or a 2-lamp cross section with a choice of energy efficient T5 HO, T5 or T8 lamping options.

Construction and Finish

The Perimeter CS2 luminaire body is one-piece and uniquely die-formed to provide strength and alignment throughout its length and consistency in lighting performance. The body is formed from 20-gauge steel and painted in a standard white powder coated finish. An optional semi-specular reflector is available for applications where additional lighting is required further down the wall.

Standard corners include 90° inside, 90° outside, 45° inside and 45° outside corner connectors. Non-standard corners are available by special factory order.

Mounting

The Perimeter CS2 is engineered for ease of installation and maintenance. The pre-wired CS2 sections are field installed without disassembly by simply attaching the fixture to the aluminum wall-mount rail. An extruded aluminum ceiling trim enables a neat interface in all ceiling applications.

Lighting Control Options

The Perimeter CS2 offers a wide selection of light control options for the 203mm (8.0") opening, including:

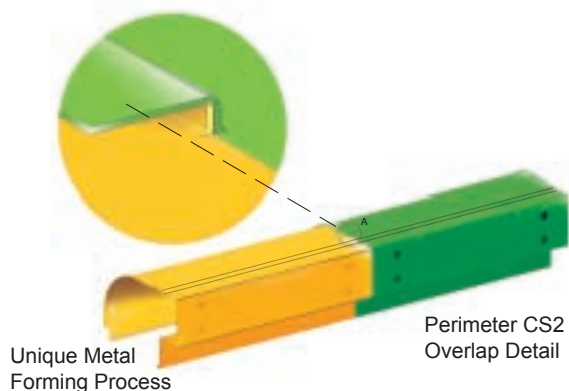
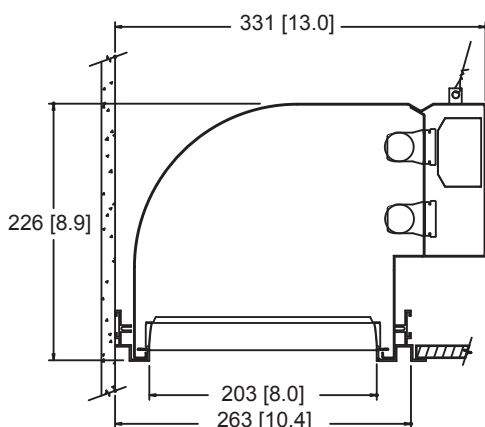
- Specular Parabolic Louver
- Semi-Specular Parabolic Louver
- White Painted Parabolic Louver
- Prismatic Lens
- Open Downlight

The Perimeter CS2 offers 100% downlight with all of the above control options.

Electrical

Integral electronic ballast is included for T5 HO, T5 or T8 lamping at 120, 277 or 347 volts. All sections are pre-wired for quick connection and installation. Power is introduced at any point in the system through knockouts spaced at 4-foot intervals. For multiple circuits, battery pack and emergency circuit wiring consult factory.

All fixtures are CSA and UL listed.



METALUMEN

Distinguished Design ↔ Engineered Excellence

METALUMEN MANUFACTURING INC.

570 Southgate Drive, Guelph, Ontario N1G 4P6

Mailing Address: P. O. Box 1779, Guelph, Ontario N1H 6Z9

toll free 1-800-621-6785 t 519-822-4381 f 519-822-4589

www.metalumen.com

Please refer to black and white ordering guide for detailed product information and photometrics or visit our web site at www.metalumen.com

All dimensions are nominal and subject to tolerances. We reserve the right to make changes that will not alter installed appearance, function, or performance. These designs remain the property of Metalumen. We reserve the exclusive right to reproduce them and to manufacture the items illustrated herein. Some combinations may not be available, consult factory. METALUMEN™ is a registered trademark. © 2005 Metalumen Manufacturing Inc.