

Perimeter CS2

Fluorescent . Perimeter



A minimum order value of \$2,500 is required for any order of CS1/CS2/CS3

CAT #:

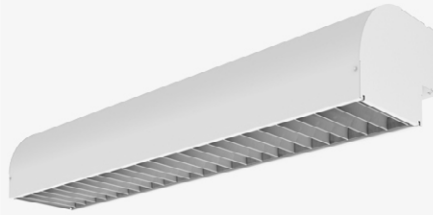
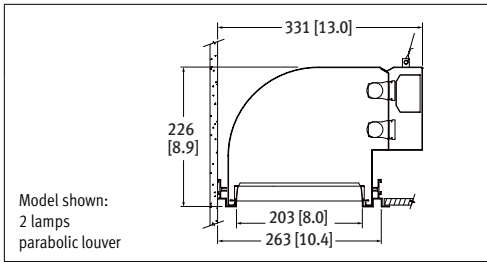
PREP BY:

DATE:

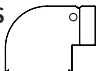
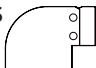
PROJECT:

TYPE:

NOTES:



ORDERING LOGIC

CS2					W			PRM		
# of lamps	Source	Length	Optics	Reflector	Finish	Ballast	Circuitry	Mounting	Voltage	IC
# of Lamps	Source	Optics		Ballast		Mounting		Integrated Control (IC)		
<div>1S</div>  <div>1 - lamp staggered</div>	T8	SSP = Semi Specular Parabolic Louver		E = Electronic Instant Start (T8)		PRM = Perimeter		_ = None (leave space empty)		
	T5	W = White Painted Parabolic Louver		R = Programmed Rapid Start		Voltage		D = Daylight Sensor		
<div>2S</div>  <div>2 - lamps staggered</div>	T5HO	PL = Prismatic Lens		D1 = 0-10V Dimming		1 = 120 V		O = Occupancy Sensor		
	Length	_ = None (leave space empty)		D2 = DALI		2 = 277 V		DO = Daylight/Occupancy Sensor		
	Please consult factory	Reflector		Circuitry		3 = 347 V				
		W = White		1 = 1 Circuit		4 = UNV (120-277 V)				
		SSR = Semi Specular Reflector		LR = Left/Right Switching (2 Lamps)						
	Finish		EM = Emergency/Night Light							
	W = White		B = Battery Pack							

SPECIFICATIONS

Due to the Continuous Improvement Policy at Metalumen, we reserve the right to change our specifications without notice.

Housing: Die formed 20 gauge steel body. A telescopic section can be used with any combination of standard modules to complete a run of any length. A 150mm [6"] overlap of the lamps and a full extension into the corners provides even illumination along the wall.

Trim Extrusions: Extruded aluminum wall finishing and supporting extrusions painted white.

Corner Details: Standard corners include

90 degree inside, 90 degree outside, 45 degree inside and 45 degree outside connectors.

Optical System: The Perimeter CS2 offers the following options for the 203mm (8.0") opening, including: Semi-Specular Parabolic Louver, Prismatic Lens and Open Downlight. 100% downlight is available with all options.

Finish: Standard white powder coated.

Weight: 2.57 kg/300mm [5.6 lb/ft]

Mounting: The pre-wired CS2 sections are field installed without disassembly by simply attaching the fixture to the aluminum wall-mount rail. An extruded aluminum ceiling trim enables a neat interface in all ceiling applications.

Electrical: Integral electronic ballast is included for T5HO, T5 or T8 lamping at 120, 277 or 347 volts. All sections are prewired for quick connection and installation. Power is introduced at any

point in the system through knockouts spaced at 4-foot intervals. For multiple circuits, battery pack and emergency circuit wiring consult factory.

Ballast: Instant Start (T8) , Programmed Rapid Start, 0-10V Dimming, DALI

Approvals: Certified to NRTL and IES testing standards. cULus certified.

Environment: Suitable for dry locations.

WARRANTY

Metalumen will warrant a one year parts and labour warranty. Warranty is valid if luminaire is installed and used according to specification. The Ballast will carry a standard 5 year warranty by the manufacturer. If defective, Metalumen will send replacement ballasts or drivers at no cost along with detailed replacement instructions and instructions on how to return defective components to Metalumen.

FEATURES

COMMERCIAL // Commercial Lighting - With over 30 years of successful architectural lighting, providing unique concept and installation solutions has become second nature. Metalumen's Start to End Development Process results in unique performance, design and architectural requirements from concept through implementation. Metalumen's Lighting Solutions have been applied to customer projects requiring: high profile architectural installations; improved energy efficiency; retrofit installations; unique installations. Metalumen can provide top-quality innovative fixtures when and where they are needed and, at the same time, allow the customer to determine their level of involvement in Metalumen's Start to End Development Process.

PHOTOMETRIC DATA

**2 T8
LAMPS**

File Name: CS2-2T8-4-W
Luminaire Lumens: 3632
Total Watts: 78
Efficiency: 63 %
Efficacy: 47 lms/W
Optics: None
Reflector: White reflector

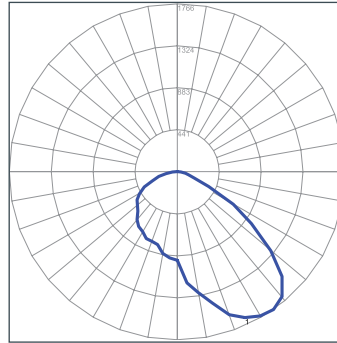
COEFFICIENTS OF UTILIZATION

Zonal Cavity Method

Effective Floor Cavity Reflectance = .20

RC	80				70				50			
RW	70	50	30	10	70	50	30	10	50	30	10	
RCR												
0	75	75	75	75	73	73	73	73	70	70	70	
1	68	65	63	60	66	64	61	59	61	59	57	
2	62	57	52	49	60	56	52	48	53	50	47	
3	56	50	45	40	55	49	44	40	47	43	39	
4	51	44	38	34	50	43	38	34	41	37	33	
5	47	39	33	29	46	38	33	29	37	32	29	
6	43	35	29	25	42	34	29	25	33	28	25	
7	40	32	26	22	39	31	26	22	30	25	22	
8	37	29	23	19	36	28	23	19	27	23	19	
9	35	26	21	17	34	26	21	17	25	20	17	
10	32	24	19	16	32	24	19	16	23	19	16	

PHOTOMETRIC CURVE



CANDLE DISTRIBUTION

Vertical Angle	Horizontal Angle				
	0	22.5	45	67.5	90
0	931.75	931.75	931.75	931.75	931.75
5	943.13	1028.34	999.74	1083.04	1173.15
15	881.07	1099.96	1308.65	1443.24	1428.33
25	844.33	1157.03	1467.24	1642.09	1690.14
35	792.72	1218.24	1528.24	1690.54	1765.55
45	658.41	1116.05	1417.24	1524.43	1557.89
55	528.76	945.01	1118.49	1008.01	951.67
65	404.61	702.52	603.02	449.65	363.94
75	231.56	316.23	153.87	132.21	126.09
85	51.38	39.85	39.84	38.05	40.48
90	2.91	3.77	3.8	2.84	3.61

LUMINANCE DATA (CD/M²)

Vertical Angle	Horizontal Angle		
	0	45	90
45	2538	3700	3791
55	2358	3043	2380
65	2219	1769	967
75	1717	507	369
85	617	155	136

**2 T5HO
LAMPS**

File Name: CS2-1ST5-6-PL-W
Luminaire Lumens: 2840
Total Watts: 64.99
Efficiency: 55 %
Efficacy: 44 lms/W
Optics: Prismatic lens
Reflector: White reflector

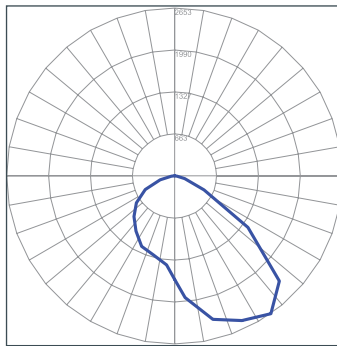
COEFFICIENTS OF UTILIZATION

Zonal Cavity Method

Effective Floor Cavity Reflectance = .20

RC	80				70				50			
RW	70	50	30	10	70	50	30	10	50	30	10	
RCR												
0	65	65	65	65	64	64	64	64	61	61	61	
1	60	57	55	53	58	56	54	53	54	52	51	
2	55	51	47	44	53	50	46	44	48	45	43	
3	50	45	41	37	49	44	40	37	42	39	36	
4	46	40	36	32	45	39	35	32	38	34	31	
5	43	36	31	28	42	35	31	28	34	30	27	
6	40	33	28	24	38	32	28	24	31	27	24	
7	37	30	25	22	36	29	25	22	28	24	21	
8	34	27	23	19	33	27	22	19	26	22	19	
9	32	25	20	18	31	25	20	17	24	20	17	
10	30	23	19	16	29	23	19	16	22	18	16	

PHOTOMETRIC CURVE



CANDLE DISTRIBUTION

Vertical Angle	Horizontal Angle				
	0	22.5	45	67.5	90
0	1066	1066	1066	1066	1066
5	1163	1157	1133	1100	1062
10	1266	1244	1195	1128	1052
15	1350	1317	1244	1145	1036
20	1410	1368	1273	1145	1011
25	1424	1375	1270	1121	972
30	1373	1324	1222	1067	917
35	1260	1224	1137	985	846
40	1098	1085	1029	892	759
45	898	913	900	788	662
50	706	724	743	672	563
55	526	533	569	544	465
60	379	380	408	408	368
65	277	267	271	286	279
70	206	194	172	192	202
75	154	141	115	129	139
80	107	97	82	83	90
85	50	51	39	41	43
90	0	0	0	0	0

LUMINANCE DATA (CD/M²)

Vertical Angle	Horizontal Angle		
	0	45	90
45	5011	5022	3694
55	3618	3914	3199
65	2586	2530	2605
75	2348	1753	2119
85	2264	1766	1947