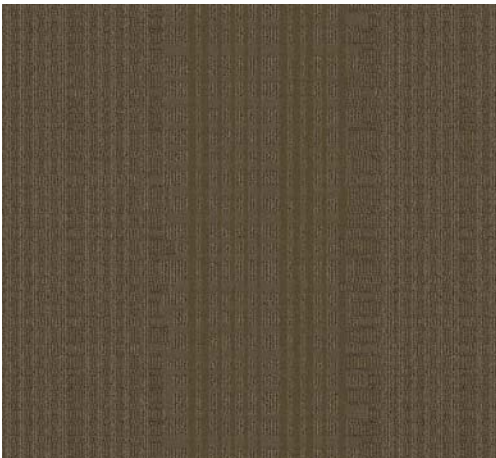


I19929 – Breeze Scheme 2

CARPET SPECIFICATIONS

CONSTRUCTION	1/10 INFINITY TIP SHEAR
PILE FIBER	100% SOLUTION DYED NYLON
PLY / HEATSET METHOD	2 PLY SUPERBA HEAT SET
URNS PER INCH	4.5 TPI
STITCH RATE PER 3"	45
PILE HEIGHT	.176" AVERAGE
TUFTED PILE WEIGHT	32 oz
DYE METHOD	SOLUTION DYED
PRIMARY BACKING	WOVEN POLYPROPYLENE – MINIMUM 18 PIC PRIMARY
SECONDARY BACKING	ACTIONBAC
WIDTH	12' (CUSTOM WIDTHS AVAILABLE, UP TO 15' WIDE)
DENSITY FACTOR	6,545
WEIGHT DENSITY FACTOR	209,440
WARRANTY	TEN YEAR LIMITED WEAR
SOIL & STAIN TREATMENT	SCOTCHGARD
PATTERN REPEAT	W 24" X L 24"
CERTIFICATION	CARPET & RUG INSTITUTE GREEN LABEL PLUS (GLP7108)
TESTING DATA	ASTM E-648 Flooring Radiant Panel: Class I DOC-FF1-70 Methenamine Pill Test: Passes AATCC 134 Electrostatic Propensity: Less than 3.5 KV E0622 Smoke Chamber: Less than 450

***** NO SUB-CODE MATERIALS CAN BE USED IN THE MANUFACTURING PROCESS *****



Specifications are based on averages from manufacturing processes and may vary within normal industry tolerances. Material supply and/or manufacturing processes may necessitate specification changes without notice. Such variations do not affect product performance.

This carpet is manufactured and recommended for floor covering use only.

As in all quality carpet, colors are subject to dye lot variations. For optimum side match and finished seam appearance, this product should be installed whenever possible, with seams running perpendicular to major external (outside) light sources.

The equipment used to manufacture patterned (graphics) carpet may create visible lines in both length and width directions. This characteristic will not always be detectable in small samples and is not considered a manufacturing defect.

As with all patterned carpets, perfect pattern match may not be obtainable at seams. Tolerances in pattern registration – bow and skew – are to be expected. Reasonable pattern matches may be obtained by using trained, experienced professional installers and by following the manufacturers' installation procedures. Chair pads are recommended under office chairs with rollers to preserve appearance retention, avoid premature or accelerated wear, and act as a deterrent toward delamination. Special backing systems are available that do not require chair pads.

Walk off mats are recommended at building entry ways to reduce soiling. Recommended adhesive is Signature Hospitality 2800 Multi Purpose Latex Adhesive and Signature Hospitality 1801 Universal Seam Sealer. For warranties to apply, all adhesives and seam sealers must be approved by Signature Hospitality Carpets.

For samples, specifications, or other information please contact your sales representative



2222 South Hamilton Street • Dalton, GA 30721
P.O. Box 1328, Dalton, GA 30722-1328
1.800.809.7086 • T 706.270.5799 • F 706.270.8779
info@signaturehospitalitycarpets.com
www.signaturehospitalitycarpets.com